

- › [ARCHITECTURAL MAILBOXES](#) /
- › [Architectural Mailboxes Plastic Mailbox Flag Replacement Kit, Red \(Model RFL100AM\) Instruction Manual](#)

ARCHITECTURAL MAILBOXES RFL100AM

Instruction Manual

ARCHITECTURAL MAILBOXES PLASTIC MAILBOX FLAG REPLACEMENT KIT

Model: RFL100AM

Brand: ARCHITECTURAL MAILBOXES

1. PRODUCT OVERVIEW

This manual provides instructions for the installation, operation, and maintenance of your Architectural Mailboxes Plastic Mailbox Flag Replacement Kit. This kit is designed to replace a broken or missing mailbox flag, ensuring proper signaling for mail delivery and pickup.



Image 1.1: Components of the Mailbox Flag Replacement Kit, including the red plastic flag, black mounting bracket, and hardware.

2. SETUP AND INSTALLATION

2.1 Package Contents

- 1x Red Plastic Mailbox Flag
- 1x Mounting Bracket (Black)
- Assembly Hardware (screws, washers, nuts)
- Installation Instructions (this manual)

2.2 Tools Required (Not Included)

- Drill with appropriate drill bit (if new holes are needed)
- Screwdriver (Phillips head recommended)
- Wrench or pliers (for nuts)
- Measuring tape or ruler
- Pencil or marker

2.3 Installation Steps

1. **Prepare the Mailbox:** Identify the location on your mailbox where the flag will be mounted. If replacing an old flag, remove all existing flag components and clean the area.
2. **Position the Bracket:** Place the black mounting bracket against the side of the mailbox at the desired height. Ensure it is level and positioned correctly for the flag to operate freely.
3. **Mark and Drill Holes:** Use a pencil or marker to mark the positions for drilling through the holes in the mounting bracket. Carefully drill pilot holes through the mailbox wall.
4. **Attach the Bracket:** Secure the mounting bracket to the mailbox using the provided screws, washers, and nuts. Ensure the bracket is firmly attached and does not wobble.
5. **Insert the Flag:** Slide the red plastic flag into the designated slot on the mounting bracket. The flag should pivot smoothly up and down.
6. **Test Operation:** Raise and lower the flag several times to ensure it moves freely and stays in both the up and down positions without excessive play.

Say Hello to a New Flag

Easy replacement kit for
worn or missing flags

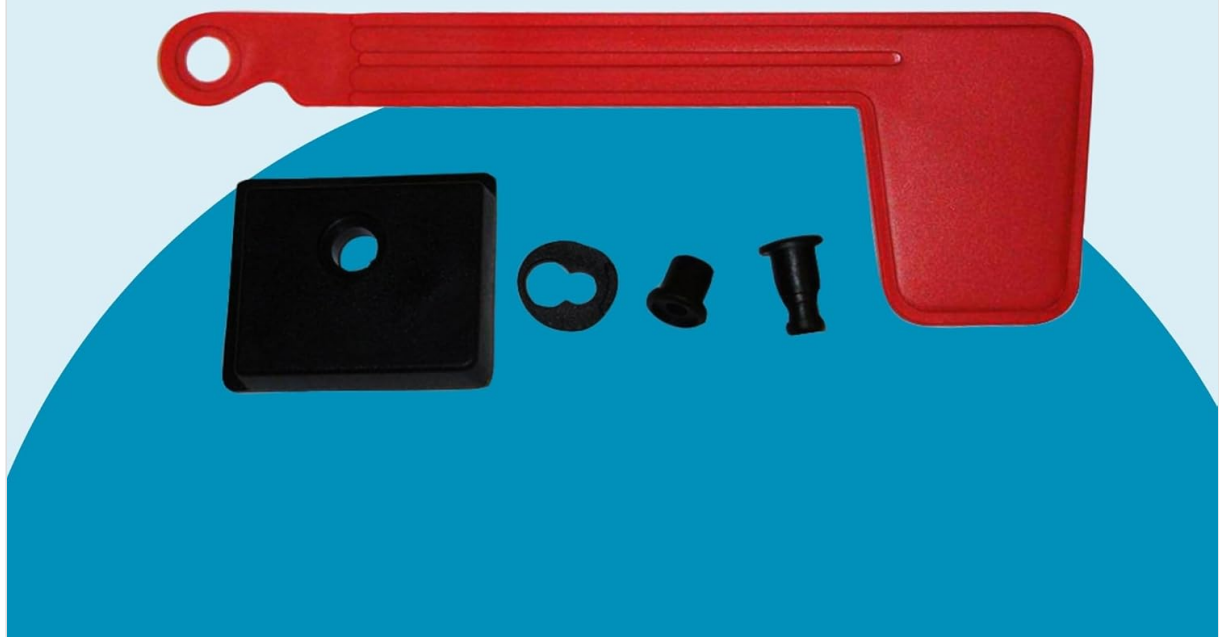


Image 2.1: Example of the red mailbox flag correctly installed on a mailbox.

3. OPERATING INSTRUCTIONS

The mailbox flag serves as a visual indicator for mail carriers regarding the presence of outgoing mail or the delivery status of incoming mail.

- **Outgoing Mail:** To signal that you have outgoing mail for pickup, raise the red flag to the upright position.
- **Incoming Mail:** After the mail carrier delivers mail, they will typically lower the flag. If you do not have outgoing mail, ensure the flag is in the down position.

The Little Fix That Delivers Big

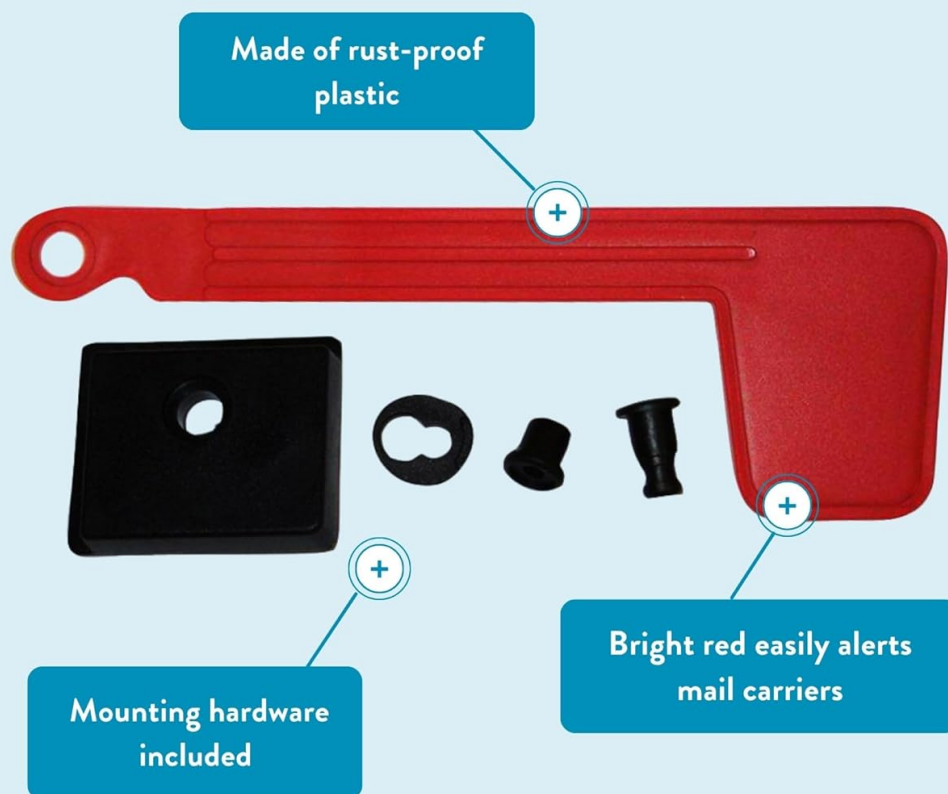


Image 3.1: The red flag raised, indicating outgoing mail.

4. MAINTENANCE

The Architectural Mailboxes Plastic Mailbox Flag is designed for durability and minimal maintenance. Follow these guidelines to ensure its longevity:

- **Cleaning:** Periodically wipe the flag and bracket with a damp cloth to remove dirt, dust, or grime. Avoid abrasive cleaners that could damage the plastic finish.
- **Inspection:** Regularly check the flag and its mounting for any signs of wear, damage, or loose connections. Ensure the flag pivots freely and securely.
- **Rust Prevention:** The flag is made from rust-proof plastic, requiring no specific rust prevention measures.

5. TROUBLESHOOTING

If you encounter issues with your mailbox flag, refer to the following troubleshooting guide:

Issue	Possible Cause	Solution
Flag does not stay in upright position.	Loose mounting bracket or worn pivot point.	Tighten mounting hardware. Inspect the pivot point for damage; if severely worn, replacement may be necessary.
Flag is difficult to move.	Dirt or debris in the pivot mechanism, or overtightened hardware.	Clean the pivot area. Loosen mounting hardware slightly, ensuring it remains secure.
Flag appears faded or discolored.	Prolonged exposure to sunlight and weather elements.	This is normal wear over time. The flag's functionality is not affected. Replacement is an option for aesthetic reasons.

6. SPECIFICATIONS

Feature	Detail
Model Number	RFL100AM
Material	Plastic
Color	Red
Item Weight	1.44 ounces
Product Dimensions	8.19 x 0.5 x 2.87 inches
Manufacturer	Solar Group, Inc.

100% Durable Plastic.
zero rust. zero worry.

Made of Rust-Proof Plastic



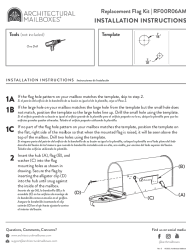
Image 6.1: Dimensional drawing of the mailbox flag, showing approximate measurements.

7. WARRANTY AND SUPPORT

For specific warranty information regarding your Architectural Mailboxes Plastic Mailbox Flag Replacement Kit, please refer to the manufacturer's official website or contact their customer service directly. Warranty terms and conditions may vary.

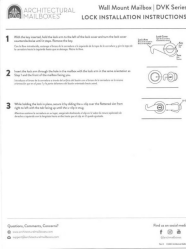
For technical support or further assistance, please contact Architectural Mailboxes customer service:

- **Website:** www.architecturalmailboxes.com (Note: This is a placeholder URL, please refer to the actual manufacturer's website for accurate contact information.)
- **Phone:** Refer to the manufacturer's website for current contact numbers.



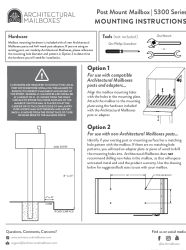
Architectural Mailboxes RF00R06AM Flag Kit Installation Guide

Step-by-step installation instructions for the Architectural Mailboxes RF00R06AM Replacement Flag Kit, including template usage and assembly details.



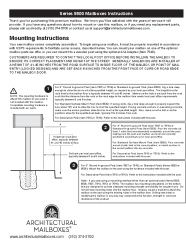
[Architectural Mailboxes DVK Series Wall Mount Mailbox Lock and Mounting Instructions](#)

Comprehensive installation guide for the Architectural Mailboxes DVK Series wall mount mailbox. Covers lock installation steps and mounting procedures, including hardware and tool requirements for secure installation.



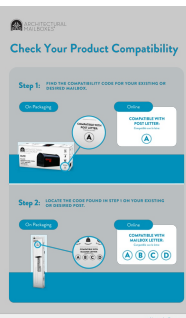
Architectural Mailboxes 5300 Series Post Mount Mailbox Mounting Instructions

Detailed mounting instructions for the Architectural Mailboxes 5300 Series Post Mount Mailbox, covering hardware, tools, and installation options for compatible and non-compatible posts.



[Architectural Mailboxes Series 5500 & Model 7510 Installation and Assembly Guide](#)

Detailed installation and assembly instructions for Architectural Mailboxes Series 5500 mailboxes and Model 7510 mailbox post, covering mounting, USPS requirements, and component assembly.



[Check Your Mailbox Product Compatibility | Architectural Mailboxes](#)

Learn how to check your product compatibility with Architectural Mailboxes. Follow simple steps to find compatibility codes for your mailbox and post.



California Proposition 65 Warning for Architectural Mailboxes

This document provides the California Proposition 65 warning for Architectural Mailboxes products, detailing potential exposure to Carbon black and its known carcinogenic properties. Includes information and links for further details.

