

Manuals+

[Q & A](#) | [Deep Search](#) | [Upload](#)

[manuals.plus](#) /

› [Simplicity](#) /

› [Simplicity S9701 Mimi G Easy Misses' Knit Dress Sewing Pattern Instruction Manual](#)

Simplicity S9701

Simplicity S9701 Mimi G Easy Misses' Knit Dress Sewing Pattern Manual

Model: S9701 | Brand: Simplicity

INTRODUCTION

This manual provides instructions for creating a slim-fit knit dress using the Simplicity S9701 sewing pattern. The pattern includes options for two dress lengths and features a square neckline with either wrist-length or elbow-length sleeves. This pattern is designed for misses' sizes 18-20-22-24-26.

WHAT'S INCLUDED

Your Simplicity S9701 pattern packet contains the following components:

- Sewing Templates
- Fabric Recommendations
- Pattern Pieces
- Sizing Guides
- Detailed Instructions

FABRIC RECOMMENDATIONS

This pattern is specifically designed for knit fabrics. Recommended fabric types include:

- Ribbed Knits
- Jersey Knits
- Two-Way Stretch Knits
- Spandex Blends
- Stretch Velvet
- Ponte Knits

Ensure your chosen fabric has sufficient stretch for the garment's intended fit.

SIZING INFORMATION

Refer to the sizing chart provided on the pattern envelope and within the instruction sheet to select the appropriate size. Accurate body measurements are crucial for achieving the best fit.

S9701

Very Easy

Très Facile

MISSES' KNIT DRESS IN TWO LENGTHS

Suggested Fabrics: Stretch Knits only such as Ribbed Knits, Jersey, Two-Way Stretch, Lycra or Spandex Blends, Stretch Velvet. See Pick-A-Knit® Rule.

Sizes	8	10	12	14	16	18	20	22	24	26
European	34	36	38	40	42	44	46	48	50	52

BODY MEASUREMENTS: Select pattern size based on body measurements

Bust	31½	32½	34	36	38	40	42	44	46	48	Ins.
Waist	24	25	26½	28	30	32	34	37	39	41½	*
Hip-9" below waist	33½	34½	36	38	40	42	44	46	48	50	*
Back-neck to waist	15½	16	16½	16½	16½	17	17½	17½	17½	17½	*

Dress A	60**	2½	2½	2½	2½	2½	2½	2½	2½	3	3	Yds.
Dress B	60**	1½	1½	2½	2½	2½	2½	2½	2½	2½	2½	Yds.

FINISHED GARMENT MEASUREMENTS (Includes Design and Wearing Ease)

A,B Bust	31½	32½	34	36	38	40	42	44	46	48	Ins.
A,B Waist	28	29	30½	32½	34½	36½	38½	40½	42½	44½	*
A,B Hip	36	37	38½	40½	42½	44½	46½	48½	50½	52½	*
Width, lower edge											
Dress A	32	33	34½	36½	38½	40½	42½	44½	46½	48½	Ins.
Dress B	34	35	36½	38½	40½	42½	44½	46½	48½	50½	*
Finished back length from base of neck											
Dress A	54½	55	55½	55½	55½	56	56½	56½	56½	57	Ins.
Dress B	39½	40	40½	40½	40½	41	41½	41½	41½	42	*

*with nap **without nap

ROBE EN TRICOT EN DEUX LONGUEURS POUR JEUNES FEMMES

Tissus Conseillés: Seulement pour tricotés extensibles tels que Tricotés à côtes, Jersey, Tricotés à élasticité dans les deux sens, Lycra ou mélanges de spandex, Velours extensible. Voyez la Règle-Pour-Choisir-Un-Tricot®

Tailles	8	10	12	14	16	18	20	22	24	26
Françaises	36	38	40	42	44	46	48	50	52	54
Européen	34	36	38	40	42	44	46	48	50	52

MESURES DU CORPS: Choisissez la taille du patron basée sur les mesures du corps

Poitrine	80	83	87	92	97	102	107	112	117	122	cm
Taille	61	64	67	71	76	81	87	94	99	106	*
Hanches (23cm au-dessous de la taille)	85	88	92	97	102	107	112	117	122	127	cm
Dos du cou à la taille	40	40,5	41,5	42	42,5	43	44	44	44,5	44,5	*

Robe A	150cm*	2.0	2.1	2.6	2.6	2.7	2.7	2.7	2.8	2.8	m
Robe B	150cm*	1.6	1.6	1.9	2.0	2.0	2.1	2.1	2.1	2.2	m

MESURES DES VÊTEMENTS FINI (Motif et aisance de port compris)

A,B Poitrine	80	83	87	92	97	102	107	112	117	122	cm
A,B Taille	71	73	77	82	87	92	98	103	108	112	*
A,B Hanches	92	94	98	103	108	113	118	123	128	133	*
Largeur à l'ourlet											
Robe A	82	84	88	93	98	103	108	113	118	123	cm
Robe B	87	89	93	98	103	108	113	118	123	127	*
Longueur finie - dos, votre nuque à l'ourlet											
Robe A	139	140	140	141	142	143	143	144	145	145	cm
Robe B	101	102	102	103	104	104	105	105	106	107	*

*avec sens **sans sens



A



B

PATTERN VIEWS

The Simplicity S9701 pattern offers two distinct dress views:

- **View A:** A slim-fit knit dress in a longer length with wrist-length sleeves.
- **View B:** A slim-fit knit dress in a shorter length with elbow-length sleeves.

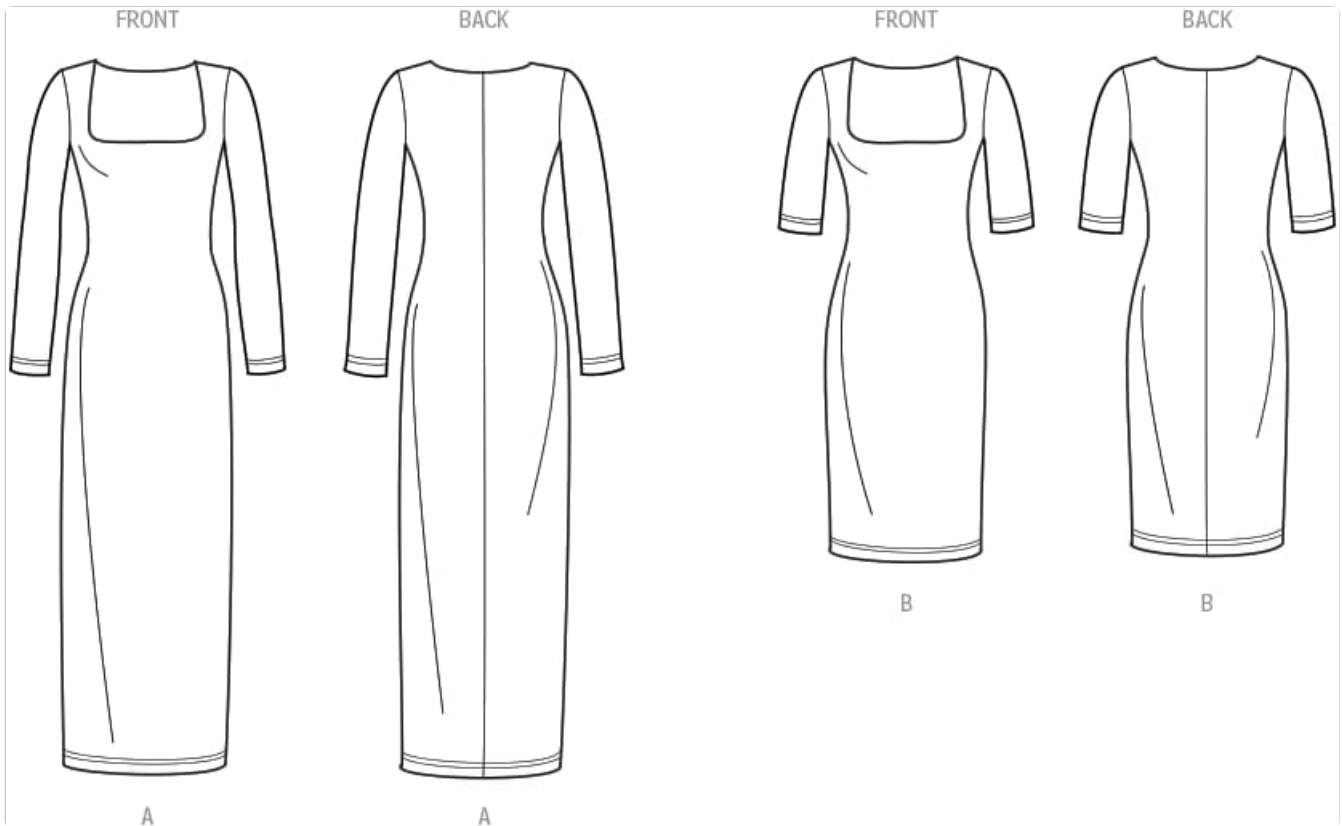


Image: Technical line drawings illustrating the front and back of Dress View A (long dress with wrist-length sleeves) and Dress View B (shorter dress with elbow-length sleeves).

SETUP AND PREPARATION

1. **Pre-wash Fabric:** Always pre-wash and dry your fabric according to its care instructions to prevent shrinkage after the garment is made.
2. **Press Pattern Pieces:** Carefully unfold and press the paper pattern pieces with a dry iron on a low setting to remove creases, ensuring accurate cutting.
3. **Identify Pattern Pieces:** Match the pattern pieces to the corresponding view (A or B) you intend to sew.
4. **Lay Out Fabric:** Follow the fabric layout diagrams provided in the instruction sheet. Pay close attention to grainlines and pattern piece placement for optimal fabric usage and garment drape.
5. **Pin and Cut:** Securely pin pattern pieces to the fabric. Use sharp fabric shears or a rotary cutter to cut out all fabric pieces accurately.

SEWING INSTRUCTIONS

The pattern includes detailed step-by-step instructions with illustrations. Below is a general overview of the sewing process:

1. **Prepare Pattern Pieces:** Transfer all markings from the pattern pieces to your fabric using tailor's chalk or a fabric marker.

2. **Sew Darts/Seams:** Stitch any darts as indicated. Join the front and back bodice pieces at the shoulder and side seams.
3. **Attach Sleeves:** Set in the sleeves according to the instructions, ensuring proper alignment.
4. **Construct Neckline:** Finish the square neckline as directed, which may involve a facing or binding.
5. **Sew Skirt/Dress Seams:** Join the skirt or lower dress sections, then attach to the bodice if applicable.
6. **Hemming:** Hem the sleeves and the bottom of the dress to the desired length.
7. **Finishing:** Press all seams and finish raw edges as appropriate for knit fabrics (e.g., with a serger or zigzag stitch).

For specific details and visual guidance, always refer to the instruction sheet included in your pattern packet.

SPECIFICATIONS

Feature	Detail
Brand	Simplicity
Model Number	S9701 (Item model number: SS9701Y5)
Sizes Included	Misses' Sizes 18-20-22-24-26
Material Type	Knit (Pattern designed for knit fabrics)
Media Type	Physical Pattern
Language	English
UPC	039363697015
Product Dimensions	0.3 x 6 x 8.5 inches (Pattern Packet)
Item Weight	2.29 ounces
Manufacturer	DG Americas



For additional support or inquiries, please visit the official Simplicity website or contact their customer service.
© 2026 Simplicity. All rights reserved.