

## typecase KB206-100

# typecase Edge Keyboard Case User Manual

Model: KB206-100

## 1. INTRODUCTION

Thank you for choosing the typecase Edge Keyboard Case. This manual provides essential information for setting up, operating, and maintaining your new keyboard case.

### 1.1 Product Overview

The typecase Edge Keyboard Case transforms your iPad into a portable workstation, offering a floating magnetic stand, a responsive keyboard, and a precision trackpad. It is designed for enhanced productivity and convenience across various environments.

### 1.2 Compatibility

This keyboard case is exclusively designed for the iPad 11th Gen 11-inch (A16, 2025) and iPad 10th Gen 10.9-inch (2022). Compatible iPad models include: A3354, A3355, A3356, A2696, A2757, and A2777. Please verify the model number on the back of your iPad before use to ensure proper fit and functionality.

## SET UP BLUETOOTH CONNECTION

### 1. INSTALL YOUR IPAD

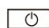
Magnetically attach your iPad to the back cover.

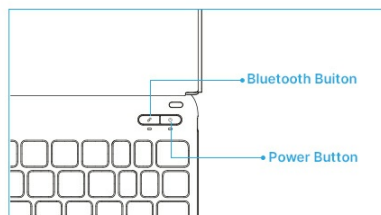



Hold your iPad before attaching

**Note:** Ensure your iPad size matches the keyboard (iPad 10th Gen, 10.9 inches) for proper attachment. If your iPad has a different size, it may not attach properly.

### 2. PAIR YOUR IPAD WITH KEYBOARD

① Long Press  for 2 seconds. the Power indicator will be on for 3 seconds

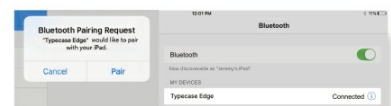


② The Bluetooth indicator light will start to blink. If it doesn't, hold down the  button for 2 seconds.

③ Open the Settings app , make sure the Bluetooth is turned ON:

Bluetooth 

④ Tap 'Typecase Edge' in 'MY DEVICES' section, then tap 'Pair' to finish the connection.



## 2. SETUP

### 2.1 Installing Your iPad

To install your iPad, simply align it with the magnetic back cover of the keyboard case. The strong magnets will securely attach your iPad, creating a stable setup. Ensure your iPad's size matches the case for proper attachment.

### 2.2 Pairing Your iPad with the Keyboard

1. **Power On:** Press and hold the power button on the keyboard for 2 seconds. The power indicator light will illuminate for 3 seconds.
2. **Activate Bluetooth Pairing:** The Bluetooth indicator light will start blinking. If it does not, press and hold the Bluetooth button for 2 seconds.
3. **Open iPad Settings:** On your iPad, navigate to the Settings app and ensure Bluetooth is turned ON.
4. **Connect:** In the 'MY DEVICES' section of your iPad's Bluetooth settings, tap 'Typecase Edge' and then 'Pair' to complete the connection.

### Reliable and Protected Sturdy Magnetic Fastener

A reliable magnetic closure ensures the safety and security of your iPad, while also providing a secure spot for your Pencil.

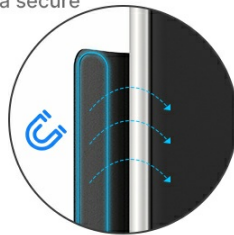


Image: Visual guide for iPad installation and Bluetooth pairing.

Your browser does not support the video tag. Please update your browser.

Video: Official typecase video demonstrating the magnetic attachment and keyboard features for iPad 10th Gen.

## 3. OPERATING INSTRUCTIONS

### 3.1 Floating Cantilever Design

The floating cantilever design allows for smooth angle adjustability, providing the perfect viewing angle for your tasks. Please note that this product supports a fixed angle opening and cannot be fully folded flat.

typecase®

# EDGE

typecase Magic-Style  
Keyboard for iPad



Image: Floating cantilever design for optimal viewing angles.

## 3.2 11-Color Backlit Keyboard

The keyboard features 11 dynamic backlight colors and 3 brightness levels, allowing you to type comfortably in any lighting condition. Adjust the backlight to your preference for an enhanced typing experience.

## Reliable and Protected Sturdy Magnetic Fastener

A reliable magnetic closure ensures the safety and security of your iPad, while also providing a secure spot for your Pencil.

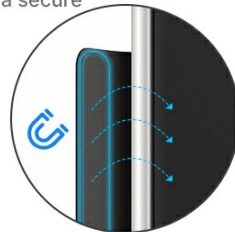


Image: Dynamic 11-color backlit keys for comfortable typing.

## 3.3 Multi-Touch Trackpad and iPadOS Shortcuts

Navigate your iPad with precision using the multi-touch trackpad, which supports familiar gestures for scrolling, swiping, and multitasking. The keyboard also includes a full row of iPadOS shortcut keys for quick access to brightness, media controls, volume, and more.

## Premium Typing Experience

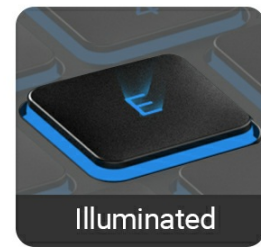
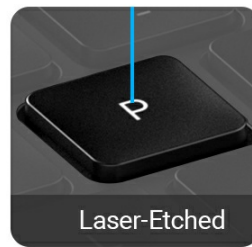


Image: Multi-touch trackpad for precise navigation.

### 3.4 Integrated Pencil Holder

A built-in pencil holder provides a secure and convenient spot for your Apple Pencil, ensuring it's always within reach and protected from loss or damage.



Image: Secure magnetic fastener and integrated pencil holder.

## 4. MAINTENANCE

To ensure the longevity and optimal performance of your typecase Edge Keyboard Case, follow these maintenance guidelines:

- **Cleaning:** Gently wipe the exterior with a soft, damp cloth. Avoid harsh chemicals or abrasive materials. For the keyboard, use a soft brush or compressed air to remove dust and debris between keys.
- **Storage:** When not in use, keep the case closed to protect both your iPad and the keyboard. Store in a cool, dry place away from direct sunlight and extreme temperatures.
- **Charging:** Use the provided Type-C charging cable. Avoid overcharging or using damaged cables.
- **Handling:** While the case is designed for durability, avoid dropping it or subjecting it to excessive force, which could damage the internal components or the iPad.

## 5. TROUBLESHOOTING

If you encounter any issues with your typecase Edge Keyboard Case, please refer to the following common

troubleshooting steps:

## 5.1 Connectivity Issues

- **Ensure Bluetooth is On:** Check your iPad's settings to confirm Bluetooth is enabled.
- **Re-pair Device:** If the keyboard is not connecting, try forgetting the device in your iPad's Bluetooth settings and then re-pairing it as described in the Setup section.
- **Charge Keyboard:** Ensure the keyboard has sufficient battery charge. Low battery can affect Bluetooth connectivity.
- **Restart Devices:** Restart both your iPad and the keyboard, then attempt to pair again.

## 5.2 Keyboard or Trackpad Unresponsive

- **Check Connection:** Verify that the keyboard is properly connected via Bluetooth.
- **Toggle On/Off:** Turn the keyboard off and then back on.
- **iPadOS Settings:** For trackpad issues, check iPadOS settings under Accessibility > Touch > AssistiveTouch to ensure it's configured correctly.

## 5.3 Incorrect Size or Fit

If your iPad does not fit correctly or the case appears oversized/undersized, please double-check your iPad's model number against the compatibility list in Section 1.2. Incorrect model selection is the most common cause for fit issues.

Your browser does not support the video tag. Please update your browser.

Video: Official typecase video demonstrating how to address size issues with the magnetic keyboard case.

## 6. SPECIFICATIONS

Feature	Detail
Brand	typecase
Model Number	KB206-100
Model Name	Typecase Magic Keyboard Case for iPad 10th/11th Generation
Compatible Devices	iPad 10th Generation (10.9-inch, 2022) A2696, A2757, A2777; iPad 11th Gen (A16, 2025) A3354, A3355, A3356
Connectivity Technology	Bluetooth
Keyboard Description	Multimedia
Special Feature	Ergonomic, Floating Cantilever Stand, Magnetic Case, Rechargeable, Trackpad
Color	Raspberry
Keyboard Backlighting Color Support	RGB (11 colors, 3 brightness levels)
Style	Floating Cantilever Magnetic Keyboard Case
Product Dimensions	12.2"L x 9.06"W x 0.98"H
Number of Keys	78
Language	English
Power Source	Rechargeable Battery
Material	Polycarbonate
Item Weight	730 Grams
What's in the Box	1 x Floating Cantilever Magnetic Keyboard Case, 1 x Type-C Charging Cable (No charger), User Manual

## 7. WARRANTY

The typecase Edge Keyboard Case comes with a **1-Year Manufacturer Warranty**. This warranty covers defects in materials and workmanship under normal use. Please retain your proof of purchase for warranty claims.

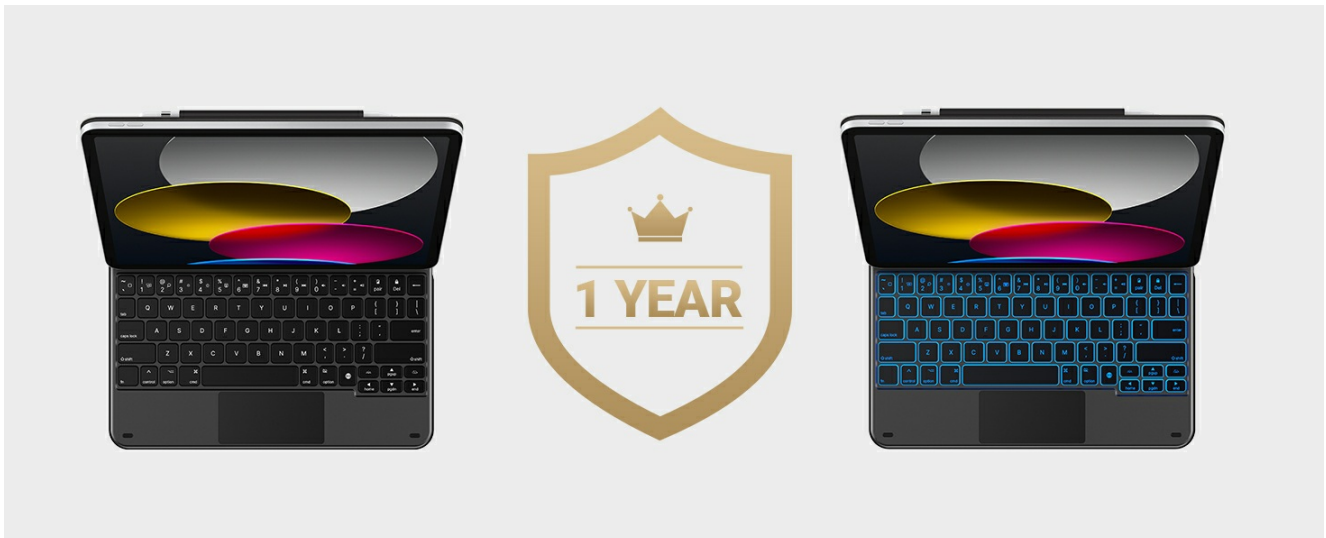


Image: 1-Year Warranty information.

## 8. SUPPORT

For further assistance, including model replacements, technical issues, or any other concerns, please contact our after-sales support team:

- **Online Chat:** Available Mon-Fri, 9 AM to 8 PM PST.
- **Phone Support:** Available Sat-Sun, 9 AM to 8 PM PST.
- **Website:** Visit the official typecase support website for more resources and contact options.

Your browser does not support the video tag. Please  
update your browser.

Video: A short video demonstrating how to contact customer support for product issues.