

Manuals+

[Q & A](#) | [Deep Search](#) | [Upload](#)

manuals.plus /

- › [SUPRENT PRO](#) /
- › [SUPRENT PRO Professional Hair Clippers and Trimmer User Manual](#)

SUPRENT PRO HC735BX

SUPRENT PRO Professional Hair Clippers and Trimmer User Manual

Model: HC735BX

INTRODUCTION

Thank you for choosing the SUPRENT PRO Professional Hair Clippers and T-Blade Trimmer Combo. This manual provides essential information for the safe and effective operation, maintenance, and troubleshooting of your new grooming tools. Please read this manual thoroughly before first use and retain it for future reference.

SAFETY INFORMATION

To ensure safe operation and prolong the life of your device, please adhere to the following safety guidelines:

- When charging, use a power adapter with an input voltage not higher than 5V 1A. Using an incompatible adapter may damage the device or pose a safety risk.
- Do not immerse the clippers or trimmer in water. While designed for durability, direct submersion is not recommended.
- Keep the device out of reach of children.
- Do not disassemble or attempt to repair the device yourself. Contact customer support for assistance.
- Avoid using the device on irritated or broken skin.

PRODUCT OVERVIEW

Your SUPRENT PRO Professional Hair Clippers and Trimmer Combo includes a main clipper, a T-blade trimmer, and various accessories designed for precise hair cutting and detailing.



Figure 1: Complete set of SUPRENT PRO Professional Hair Clippers and T-Blade Trimmer, including various guide combs, cleaning brush, oil, and USB-C charging cable.

POWDER METALLURGY BLADE

Save Half the Time And Effort



**Permanent
Sharp**



**More
Efficient**

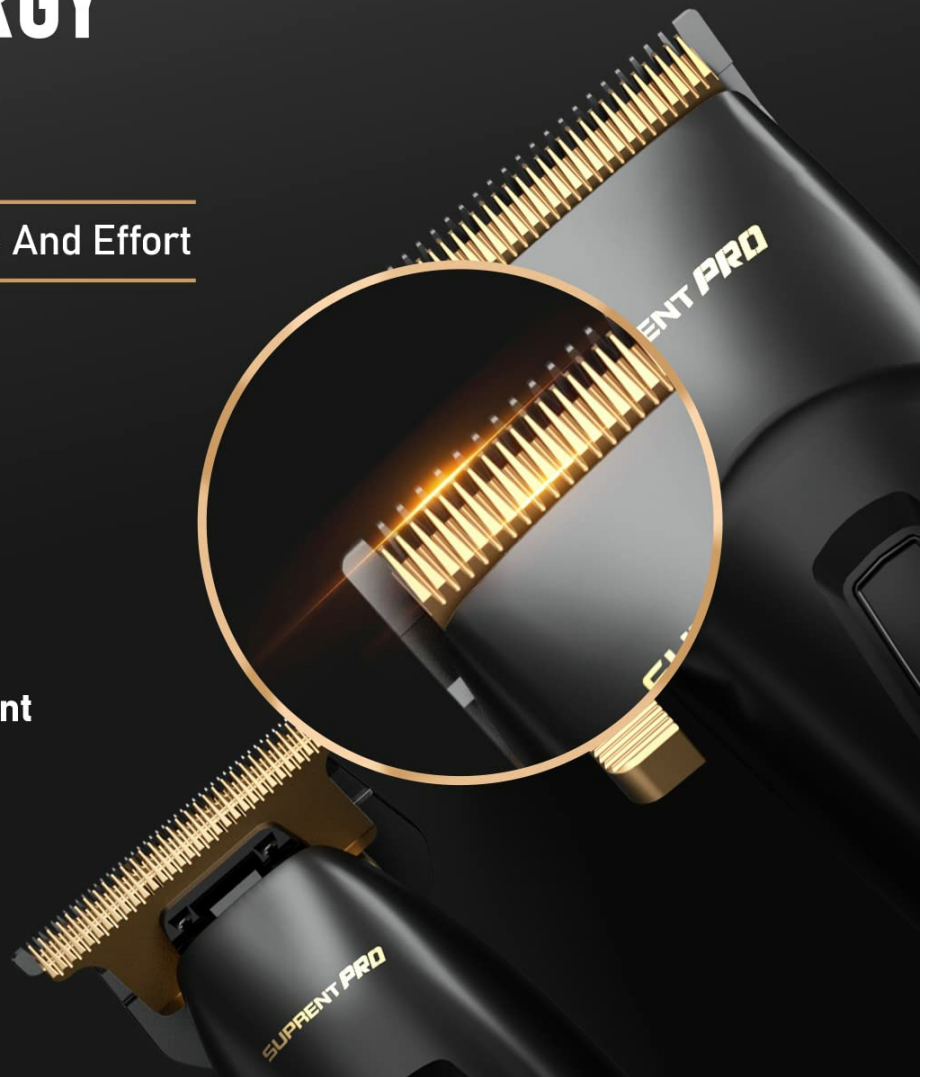


Figure 2: The clipper features a durable powder metallurgy blade, designed for ultra-sharp and wear-resistant performance, ensuring precise cuts.



Figure 3: The clipper offers a 'Turbo Mode Free Switch' for adjusting motor speed, allowing for versatile cutting across various hair types.

SHEAR & LIFE UPGRADE

5V-Boost Technology,
Enable No-Snag Cutting.



Figure 4: Illustration of the internal mechanism highlighting the 5V-Boost Technology, which maintains stable power for no-snag cutting, even through coarse hair.

ULTIMATE IN CONTROL

Ergonomic Non-Slip Design



Figure 5: The clippers feature an ergonomic non-slip design with a knurled barbell grip, providing ultimate control and comfort during use.

USB-C CHARGING

Universal Interface
Long Battery Life



Figure 6: Both the clipper and trimmer support convenient USB-C charging, offering a universal interface and long battery life for extended use.

SETUP

- 1. Initial Charge:** Before first use, fully charge both the clipper and trimmer using the provided USB-C cable and a 5V 1A power adapter (not included). The LED display will indicate charging status and battery level.
- 2. Attach Guide Comb:** Select the desired guide comb (8 for clipper, 4 for trimmer) and securely attach it to the blade. Ensure it clicks into place.
- 3. Blade Adjustment (Clipper):** Use the adjustable lever on the clipper to set the desired cutting length (0.8mm/1.2mm/1.6mm/2.0mm) for tapering and blending.

OPERATING INSTRUCTIONS

Follow these steps for effective hair cutting and trimming:

- 1. Prepare Hair:** Ensure hair is clean and dry for best results.

2. **Turn On:** Press the power button to turn on the device. The LED display will show the current speed and battery life.
3. **Select Speed (Clipper):** The clipper offers two speeds (TURBO mode). Press the speed button to switch between modes as needed for different hair densities.
4. **Cutting Technique:** Guide the clipper or trimmer through the hair against the direction of hair growth. Use smooth, even strokes. For the T-blade trimmer, use for precise edging, carving, and detailing.
5. **Clean During Use:** Periodically brush away accumulated hair from the blades using the provided cleaning brush to maintain optimal performance.
6. **Turn Off:** After use, turn off the device by pressing the power button.

Video 1: Demonstration of the SUPRENT PRO Professional Hair Clippers and Trimmer in use by a barber, showcasing precise cutting and detailing capabilities. This video highlights the ease of use and professional results achievable with the product.

Video 2: An overview of the SUPRENT PRO Professional Hair Clippers, emphasizing their suitability for professional use and the quality of the cut. It illustrates the product's performance in a barbering context.

MAINTENANCE

Proper maintenance ensures the longevity and optimal performance of your clippers and trimmer:

- **Cleaning Blades:** After each use, use the provided cleaning brush to remove all hair clippings from the blades. For a more thorough clean, you can carefully detach the blades (refer to specific instructions if available for your model) and rinse under running water, ensuring they are completely dry before reattaching.
- **Oiling Blades:** It is recommended to drip 1-2 drops of lubricating oil (included) onto the blades after every 3-5 uses. Turn on the device for a few seconds to allow the oil to distribute evenly. This keeps the blades sharp, reduces friction, and minimizes heat and noise.
- **Storage:** Store the clippers and trimmer in a cool, dry place, away from direct sunlight and moisture.
- **Blade Replacement:** For continued optimal performance, it is recommended to replace the SUPRENT Replacement Blade regularly. Replacement blades can be purchased from authorized retailers or the SUPRENT website.

TROUBLESHOOTING

If you encounter any issues with your SUPRENT PRO Hair Clippers or Trimmer, refer to the following common problems and solutions:

Problem	Possible Cause	Solution
Device not turning on	Low battery; Power button not pressed correctly	Charge the device fully; Ensure power button is pressed firmly.
Blades pulling hair or cutting poorly	Blades are dull or dirty; Insufficient lubrication; Hair buildup	Clean and oil the blades; Replace blades if dull; Remove hair buildup from blades.
Excessive noise or vibration	Lack of lubrication; Loose blade assembly	Apply lubricating oil to blades; Ensure blades are securely attached.
Device not charging	Faulty cable or adapter; Charging port issue	Try a different USB-C cable and 5V 1A adapter; Clean charging port.

If the problem persists after attempting these solutions, please contact SUPRENT PRO customer support.

SPECIFICATIONS

Detailed specifications for the SUPRENT PRO Professional Hair Clippers and Trimmer:

Product Dimensions: 9.06 x 5.98 x 3.23 inches

Item Weight: 2.4 Pounds

Item Model Number: HC735BX

Batteries: 1 Lithium Ion battery required (included)

UPC: 784110213405

Manufacturer: SUPRENT

Color: Black

Hair Type: All

Recommended Uses: Beard, Hair Cutting



Figure 7: Product packaging displaying detailed specifications for both the hair clipper and detail trimmer, including motor RPM, running time, charging time, and battery capacity.

WARRANTY AND SUPPORT

For warranty information or technical support, please contact SUPRENT PRO customer service:

- **Email:** support@suprent.com
- **Website:** www.suprent.com

Please have your model number (HC735BX) and purchase details ready when contacting support.

