

APT 176903022

APT Swivel Seat Console User Manual

Model: 176903022

For Ducato, Jumper, Boxer (from 07/2006) and Movano (from 2022)

INTRODUCTION

This manual provides essential information for the installation, operation, and maintenance of your APT Swivel Seat Console. Designed to enhance the functionality of your vehicle's interior, this console allows for 360-degree rotation of your original driver or passenger seat, optimizing space and interaction within your vehicle. Please read this manual thoroughly before installation and use to ensure proper function and safety.

PRODUCT OVERVIEW



Figure 1: Two APT Swivel Seat Consoles, showing the robust steel construction and central pivot mechanism.



Figure 2: A single APT Swivel Seat Console, providing a closer look at the locking lever and mounting points.

The APT Swivel Seat Console is engineered from high-strength, powder-coated steel, ensuring durability and stability. Its design allows for straightforward installation between your vehicle's original seat and the existing seat frame. The console features a central pivot point for smooth 360-degree rotation and a secure locking mechanism.

SPECIFICATIONS

Model Number	176903022
Vehicle Compatibility	Fiat Ducato, Citroën Jumper, Peugeot Boxer (from 07/2006); Opel Movano (from 2022)
Installation Side	Driver and Passenger Side (universal)
Rotation Angle	360 degrees
Compatibility	Original vehicle seats
Pivot Point	Central
Material	High-strength, powder-coated steel
Dimensions (W x D x H)	Approx. 44 cm x 43.4 cm x 4.2 cm
Weight (per console)	Approx. 7.7 kg
Certifications	TÜV-tested, e50 Test Certificate

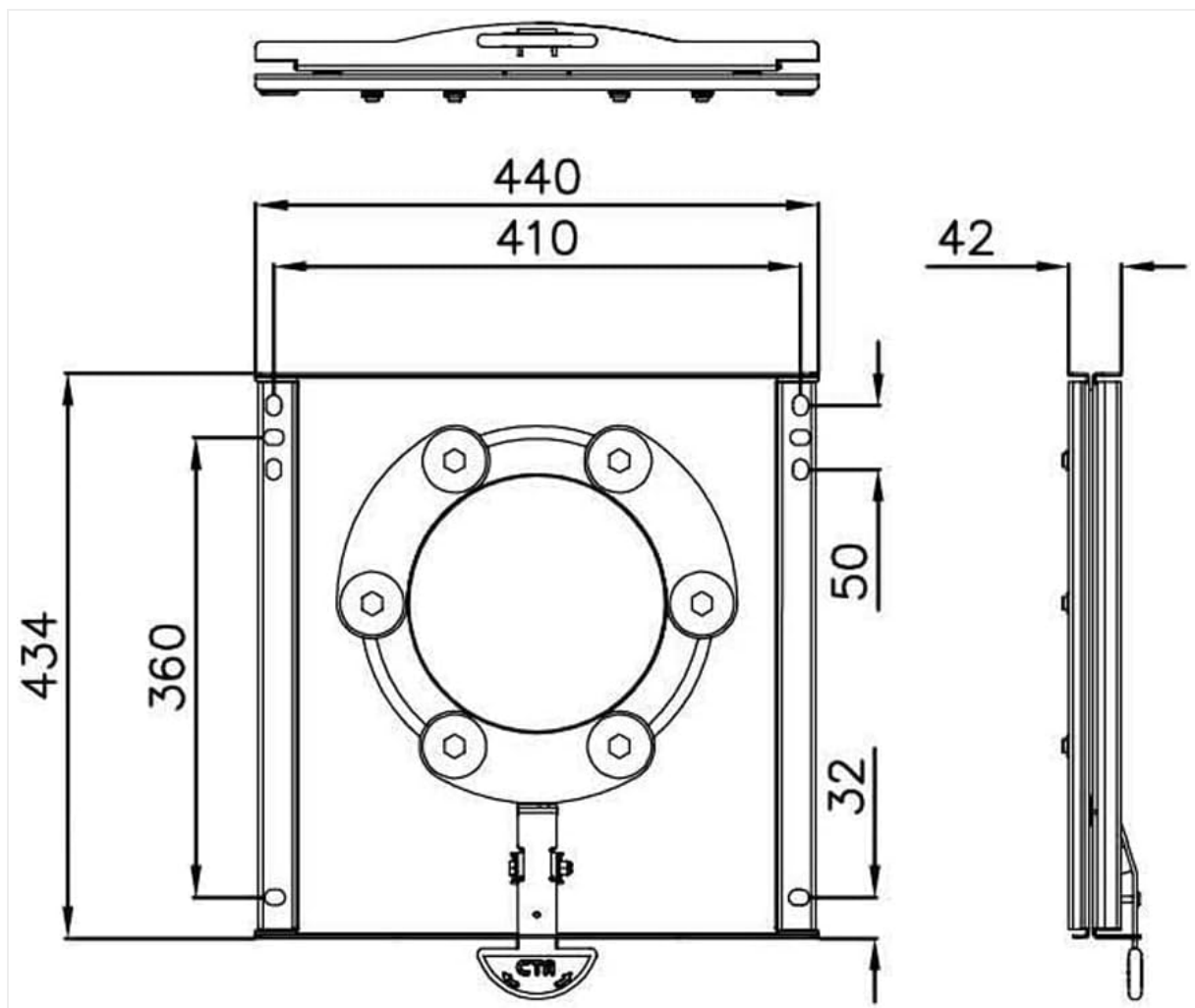


Figure 3: Technical drawing illustrating the dimensions of the swivel console in millimeters.

INSTALLATION

The swivel console is designed for straightforward installation. It is mounted between your vehicle's original seat and the existing seat frame. The package includes all necessary screws and nuts for secure attachment.

Installation Steps:

1. **Preparation:** Ensure the vehicle is parked on a level surface and the ignition is off. Disconnect the vehicle's battery if working near electrical components.
2. **Remove Seat:** Carefully unbolt and remove the original vehicle seat from its frame. Refer to your vehicle's specific service manual for detailed instructions on seat removal, especially concerning airbags or seatbelt pretensioners.
3. **Position Console:** Place the APT Swivel Seat Console onto the existing seat frame. Ensure proper alignment with the mounting holes.
4. **Mount Console:** Secure the swivel console to the seat frame using the provided screws and nuts. Tighten all fasteners according to recommended torque specifications (if available in your vehicle's manual or the console's included manual).
5. **Reattach Seat:** Place the original vehicle seat onto the installed swivel console. Align the seat's mounting points with the console's top mounting holes.
6. **Secure Seat:** Bolt the seat securely to the swivel console using the remaining provided hardware. Double-check all connections for tightness.
7. **Final Check:** Test the swivel mechanism and locking function before driving. Ensure the seat is securely

locked in place when facing forward.



Figure 4: The swivel console integrated beneath the original vehicle seat, showing its low profile.

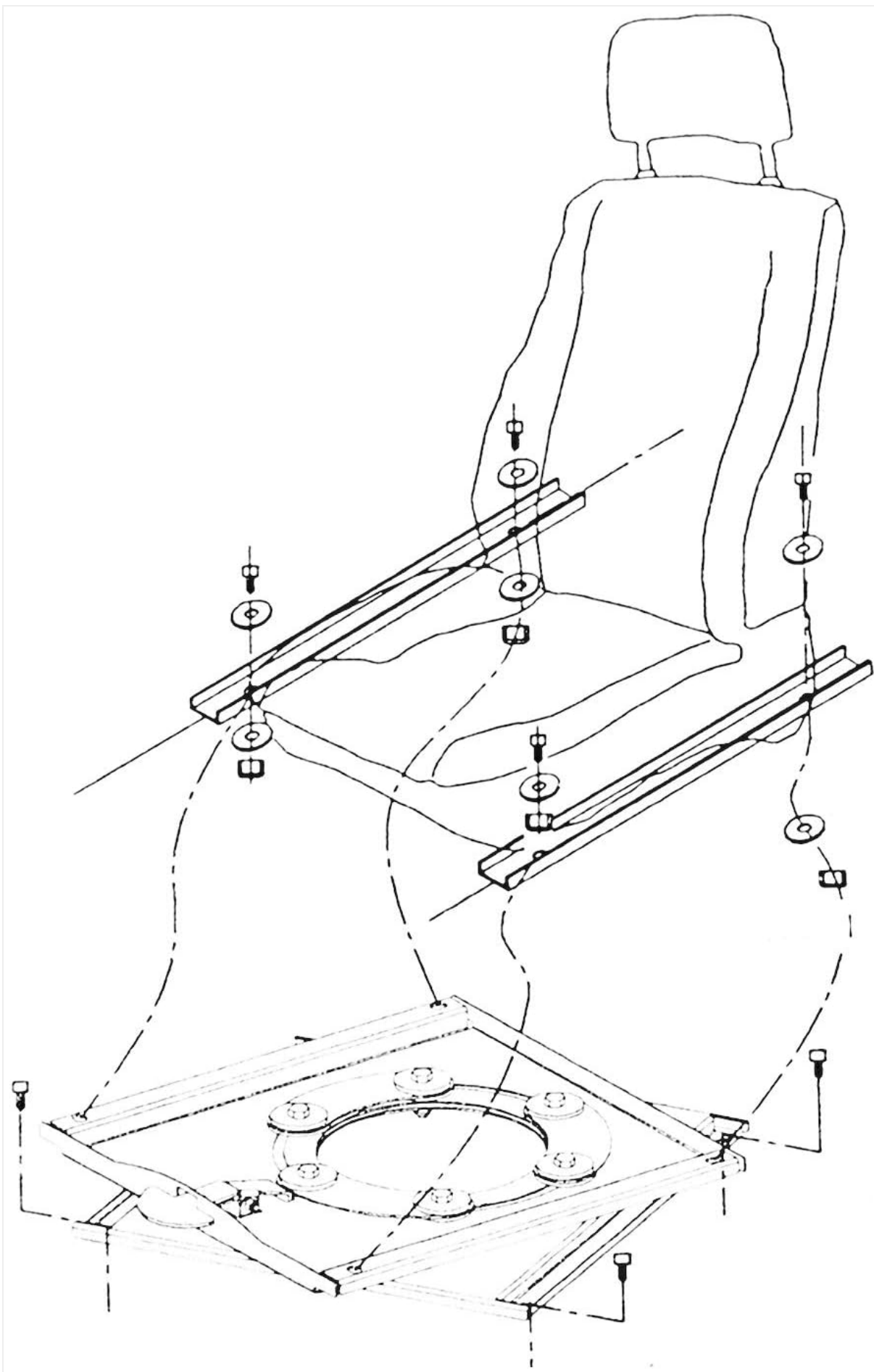


Figure 5: An exploded diagram showing the components and their assembly order for installing the swivel console between the seat and the vehicle floor.

OPERATING INSTRUCTIONS

The APT Swivel Seat Console allows for easy rotation of your vehicle seat to face the rear or side, enhancing the usability of your interior space.

To Rotate the Seat:

1. **Unlock:** Locate the red locking lever on the side of the swivel console (refer to Figure 2). Pull the lever to disengage the locking mechanism.
2. **Rotate:** Gently rotate the seat to the desired position. The console allows for full 360-degree rotation. Ensure there are no obstructions (e.g., seatbelts, cables, or interior trim) during rotation.
3. **Lock:** Once the seat is in the desired position, release the locking lever. Ensure the mechanism clicks into place, securing the seat firmly. Verify the seat is locked by attempting to rotate it without pulling the lever.

Important: Always ensure the seat is securely locked in the forward-facing position before driving. Never attempt to rotate the seat while the vehicle is in motion.



Figure 6: A vehicle seat rotated to face the rear, demonstrating the functionality of the swivel console.

MAINTENANCE

The APT Swivel Seat Console is constructed from durable materials designed for long-term use with minimal maintenance.

- **Regular Inspection:** Periodically inspect all mounting bolts and nuts to ensure they remain tight. Retighten if necessary.
- **Cleaning:** Clean the console's surfaces with a damp cloth. Avoid abrasive cleaners or solvents that could damage the powder coating.
- **Lubrication:** If the rotation mechanism becomes stiff over time, apply a small amount of silicone-based lubricant to the pivot points. Avoid excessive lubrication, which can attract dirt.
- **Check for Obstructions:** Ensure no debris or foreign objects are obstructing the swivel mechanism or locking lever.

TROUBLESHOOTING

If you encounter issues with your swivel console, consider the following common solutions:

- **Seat does not rotate smoothly:**
 - Check for any obstructions around the base of the seat or the console.
 - Ensure the locking lever is fully disengaged.
 - Apply lubricant to the pivot points as described in the Maintenance section.
- **Seat does not lock securely:**
 - Ensure the seat is fully aligned with the forward-facing position (or any other designated locking position).
 - Verify that the locking lever is fully engaged and has clicked into place.
 - Inspect the locking mechanism for any damage or debris.
- **Unusual noises during rotation:**
 - Check for loose fasteners. Retighten all bolts if necessary.
 - Lubricate the pivot points.
 - Ensure no components are rubbing against each other that shouldn't be.

If problems persist after attempting these solutions, contact the manufacturer or a qualified technician for assistance.

WARRANTY AND SUPPORT

Specific warranty information for this product is typically provided with the purchase documentation. Please refer to the original packaging or contact your retailer for details regarding warranty coverage and support services. For technical support or inquiries, please reach out to the manufacturer, APT, through their official channels or the point of purchase.

© 2023 APT. All rights reserved.

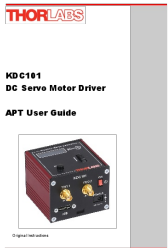
This manual is for informational purposes only. APT is not responsible for any damage or injury resulting from improper installation or use of this product.

Related Documents - 176903022



[HH Aptur Series Loudspeaker User Manual and Specifications](#)

Comprehensive user manual and technical specifications for the HH Aptur series of loudspeakers, including APT-C ceiling speakers, APT-P6 pendant speakers, APT-CL column speakers, and APT-W8S subwoofers. Learn about installation, power modes, and detailed product specs.



[Thorlabs KDC101 DC Servo Motor Driver APT User Guide](#)

This user guide provides comprehensive instructions for the Thorlabs KDC101 DC Servo Motor Driver, covering installation, operation, and software configuration using the APT software suite. Learn about manual and automatic control, PC integration, and advanced features for precise motion control.



[Scanstrut Raymarine Edition Product Guide: Marine Electronics Mounts](#)

Discover Scanstrut's comprehensive range of mounting solutions for Raymarine marine electronics. This guide details compatibility, features, and accessories for radar, GPS, and display installations, including Mast Mounts, PowerTowers, and Scanpods.



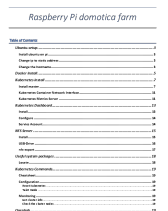
[WorldCast Equinox User Manual Release 3.1 | APT](#)

Comprehensive user manual for the APT WorldCast Equinox audio codec, version 3.1. Covers installation, configuration, operation, and technical specifications for broadcast and telecommunications professionals.



[Sanwa Supply 400-BTAD008 Bluetooth Audio Transmitter & Receiver Manual](#)

User manual for the Sanwa Supply 400-BTAD008 Bluetooth audio transmitter and receiver, detailing features, setup, operation, and troubleshooting.



[Raspberry Pi Domotica Farm Setup: Ubuntu, Docker, Kubernetes, and OpenHAB Guide](#)

A comprehensive guide to setting up a Raspberry Pi for a domotica farm. Covers Ubuntu installation, Docker, Kubernetes cluster setup, NFS server configuration, and deploying OpenHAB, InfluxDB, and Grafana.

