

PRITECH PR-2888

PRITECH Beard Trimmer PR-2888 User Manual

Model: PR-2888 | Brand: PRITECH

INTRODUCTION

Thank you for choosing the PRITECH PR-2888 Waterproof Electric Razor. This versatile grooming tool is designed for precise and comfortable trimming of beards, body hair, and can even be used for self-haircutting. Featuring a waterproof design, long-lasting battery, and nick-free blades, it offers a superior grooming experience. Please read this manual thoroughly before first use to ensure safe and optimal performance.

WHAT'S IN THE BOX

Your PRITECH PR-2888 grooming kit includes the following components:

- Electric Trimmer (PR-2888)
- Styling Comb
- Cleaning Brush
- USB-connected Charger
- Standing Charging Base
- Protective Attachment Combs (2mm, 4mm, 6mm, 8mm)
- Instruction Manual



Image: Contents of the PRITECH PR-2888 grooming kit, including the trimmer, charging base, USB cable, cleaning brush, comb, and attachment combs.

Safety Information

To ensure safe operation and prevent injury or damage, please adhere to the following safety guidelines:

- Avoid use on infants.
- Keep the device away from water sources when not in use or when charging.

- Follow all recommended cleaning and maintenance procedures as outlined in this manual.
- Do not use the trimmer while it is charging.
- Exercise caution when using the trimmer around sensitive areas of the body.
- Use the device only for its intended purpose of hair trimming and grooming.

SETUP

Attaching/Detaching Blades and Guide Combs

1. **Blade Installation:** To attach the blade head, align the blade unit with the top of the trimmer body and gently push down until it clicks securely into place.
2. **Blade Removal:** To remove the blade head, hold the trimmer firmly and push the blade unit upwards from the front until it detaches.
3. **Attaching Guide Combs:** Select the desired attachment comb (2mm, 4mm, 6mm, or 8mm). Align the comb with the blade head and slide it onto the blade until it locks into position.
4. **Removing Guide Combs:** Gently pull the attachment comb away from the blade head to remove it.

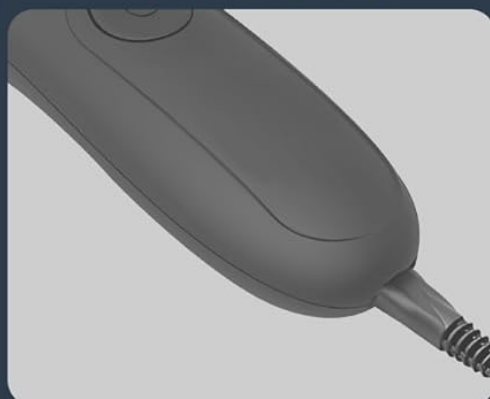
WHY CHOOSE US ?

OUR



OTHER

**RECHARGEABLE
AND CORDLESS**



**LIGHTWEIGHT AND
EASY TO MANEUVER**

WEIGHT= 144.8g(0.32lb)



Weight>0.45 lb



**WATERPROOF
AND WASHABLE**



Image: Visual guide for installing and removing the trimmer blade and attaching the various guide combs.

OPERATING INSTRUCTIONS

General Use

The PRITECH PR-2888 trimmer can be used for both wet and dry shaving, offering flexibility for your grooming routine. Its precise stainless steel blades are designed to prevent fraying and are chamfered to minimize skin scratches.

- **Power On/Off:** Press the power button located on the front of the trimmer to turn it on or off.
- **Trimming Technique:** For efficient hair removal, always trim against the direction of hair growth.

Application Areas

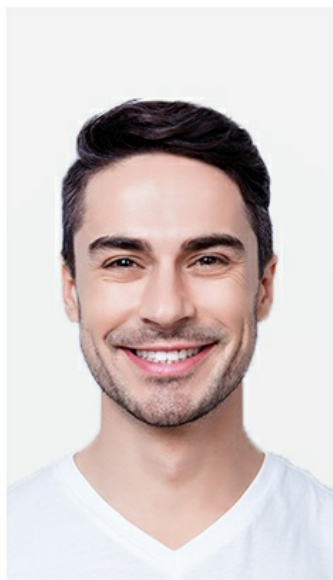
This trimmer is suitable for various grooming needs:

- **Beard Trimming:** Use the appropriate guide comb for your desired beard length.
- **Sideburn Shaping:** Use the trimmer without a guide comb for precise lines.
- **Self-Haircutting:** Can be used for maintaining shorter hairstyles or detailing.
- **Body Hair Removal:** Ideal for groin area and other sensitive body parts due to its nick-free design.

YOU CAN CHARGE WITH



Image: Demonstrations of the PRITECH trimmer being used for beard trimming and body hair grooming.



Stubble Beard

2MM Guide Comb
Might Work for You



Hollywoodian Beard

4MM Guide Comb
Might Work for You



Short Boxed Beard

6MM Guide Comb
Might Work for You



Full Beard

8MM Guide Comb
Might Work for You

Image: Examples of beard lengths achievable with the 2mm, 4mm, 6mm, and 8mm guide combs.

CHARGING

The PRITECH PR-2888 is equipped with a rechargeable 1200mAh lithium-ion battery, providing up to 150 minutes of operation time on a full charge.

- **Charging Time:** A full charge typically takes approximately 2 hours.
- **Using the Charging Base:** Place the trimmer upright on the provided standing charging base. This ensures safe charging and keeps the blades facing upwards for hygiene.
- **Direct Charging:** Alternatively, you can plug the USB-connected charger directly into the trimmer's charging port.
- **Charging Indicator:** The device will indicate its charging status (e.g., a red light for charging, green for fully charged).

INSTALLATION STEP

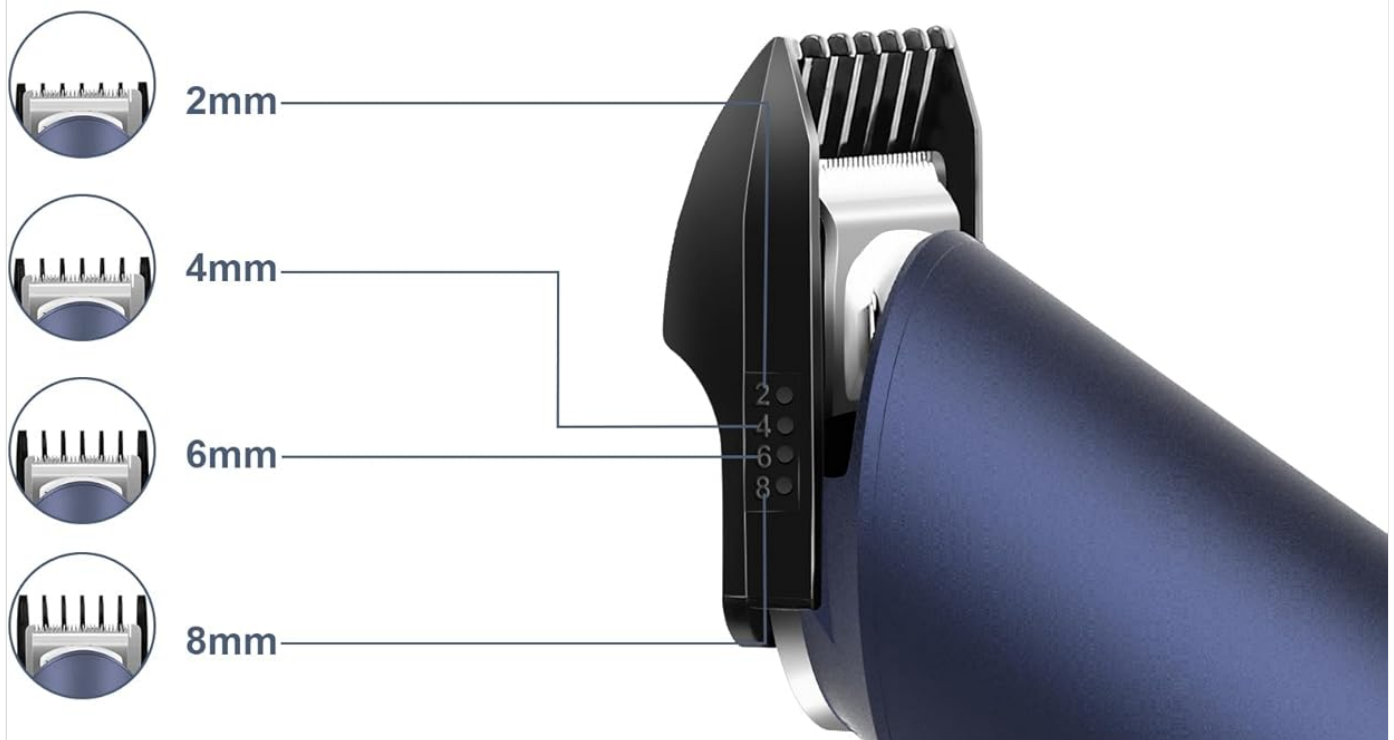
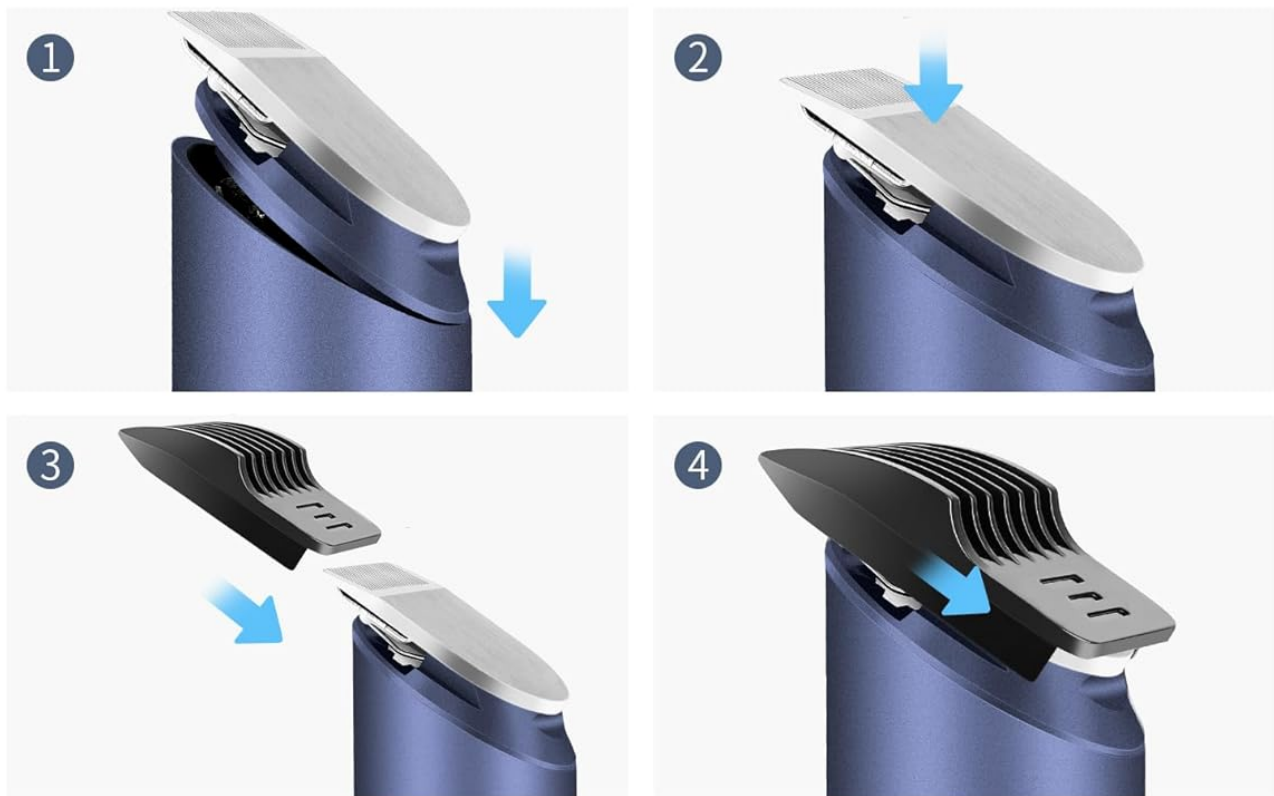


Image: Illustration of the two charging methods: via the standing base and direct USB connection.

MAINTENANCE AND CLEANING

Regular cleaning and maintenance will prolong the life of your PRITECH trimmer and ensure optimal performance.

- **Waterproof Design:** The trimmer has an IPX6 waterproof rating, allowing for easy cleaning under running water.
- **Cleaning Blades:** After each use, remove the blade head and rinse it under running water. Use the provided cleaning brush to remove any trapped hairs from the blades and the trimmer body.

- **Drying:** Ensure the trimmer and blade head are completely dry before reassembling or storing. The standing charging base helps keep blades dry when stored.
- **Lubrication:** Periodically apply a small drop of clipper oil (not included) to the blades to maintain smooth operation and prevent rust.

WASHABLE AND REMOVABLE

Easy to clean



Image: The PRITECH trimmer being rinsed under water, demonstrating its waterproof capability.

TROUBLESHOOTING

Problem	Possible Cause	Solution
Trimmer does not turn on or operate.	Battery is depleted.	Charge the trimmer for at least 2 hours. Ensure the charging cable is securely connected to both the trimmer/base and the power source.

Problem	Possible Cause	Solution
Trimmer pulls hair or cuts poorly.	Blades are dull or clogged with hair. / Incorrect trimming angle.	Clean the blades thoroughly using the cleaning brush. Ensure blades are free of debris. Try trimming against the direction of hair growth.
Charging base does not charge the trimmer.	Improper placement on base. / Faulty base or cable.	Ensure the trimmer is correctly seated on the charging base. Try charging directly with the USB cable to isolate the issue. If the problem persists, contact customer support.
Trimmer is louder than expected.	Normal operation noise. / Blades require lubrication.	Some operational noise is normal. Apply a small amount of clipper oil to the blades to reduce friction and noise.

SPECIFICATIONS

Feature	Detail
Model Number	PR-2888
Product Dimensions	1.38 x 1.38 x 5.91 inches
Item Weight	4.94 ounces (0.14 Kilograms)
Battery Type	1200mAh Lithium-ion (1 A battery included)
Operating Time	Up to 150 minutes
Charging Time	Approx. 2 hours
Waterproof Rating	IPX6
Blade Material	Stainless Steel
Manufacturer	WENZHOU PRITECH INDUSTRIAL CO.,LTD.

WARRANTY AND SUPPORT

PRITECH offers a **24-month warranty** for this product from the date of purchase. This warranty covers manufacturing defects and issues arising from normal use.

For technical support, warranty claims, or any questions regarding your PRITECH PR-2888 trimmer, please contact PRITECH customer service through their official website or the retailer where the product was purchased. Please have your model number (PR-2888) and purchase details ready when contacting support.

For more information about PRITECH products and services, you may visit the official PRITECH store on Amazon: [PRITECH Store](#).