

## MEIHUA SL-TY01

# MEIHUA SL-TY01 Solar Light User Manual

Model: SL-TY01

## 1. INTRODUCTION

Thank you for choosing the MEIHUA SL-TY01 Solar Light. This product is designed to provide efficient and versatile lighting for both indoor and outdoor environments, utilizing solar power for energy efficiency. It features a unique split design, adjustable LED panels, multiple lighting modes, and remote control functionality. Please read this manual carefully before installation and use to ensure proper operation and longevity of your device.



Image 1: MEIHUA SL-TY01 Solar Light with its solar panel, remote control, and examples of warm white, natural light, and cold white illumination.

## 2. PRODUCT COMPONENTS

The MEIHUA SL-TY01 Solar Light package includes the following items:

- 1 x Solar Lamp Unit (with 76 high-brightness LEDs and 4 adjustable light blades)
- 1 x Solar Panel (with 4.5-meter cable)
- 1 x Remote Control
- 1 x Mounting Accessories Kit (screws, wall plugs, hook)
- 1 x User Manual

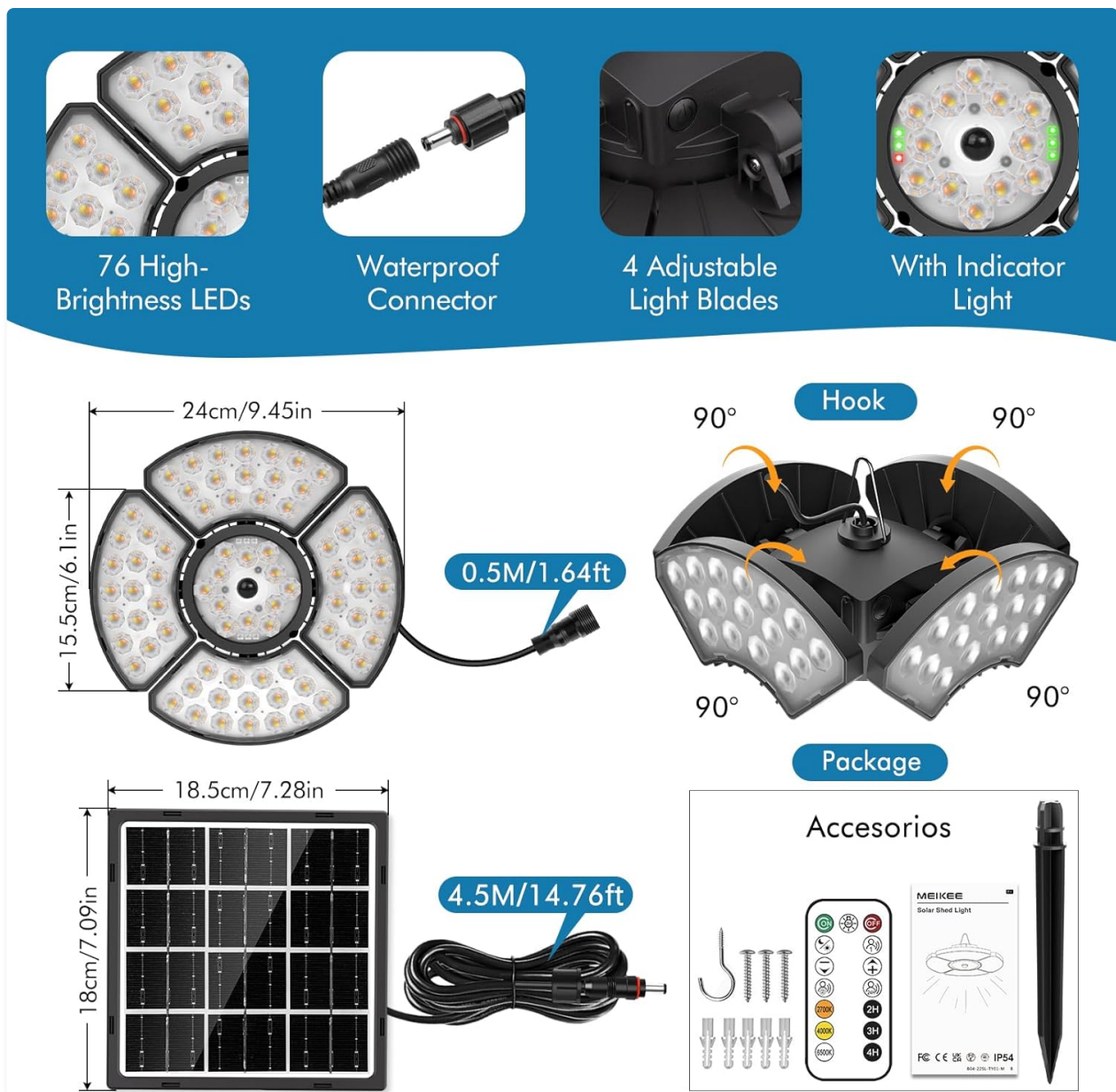


Image 2: Detailed view of the solar light unit, solar panel, waterproof connector, adjustable light blades, indicator light, and included accessories with dimensions.

### 3. SETUP AND INSTALLATION

The MEIHUA SL-TY01 Solar Light features a split design, allowing flexible placement of the solar panel and the light unit. The light is IP54 waterproof, suitable for various weather conditions.

#### Installation Steps:

- 1. Choose Location:** Select a location for the solar panel where it can receive direct sunlight for 6-8 hours daily. The light unit can be installed indoors or outdoors, wherever illumination is needed.
- 2. Mount Solar Panel:** Use the provided mounting accessories to securely attach the solar panel to a wall or roof. Ensure it is angled to maximize sun exposure.
- 3. Mount Light Unit:** Use the hook to hang the light unit in your desired location (e.g., garage, shed, porch, gazebo). The light unit's four LED panels can be adjusted 90° individually to direct light as needed.
- 4. Connect Components:** Connect the solar panel cable to the light unit using the waterproof connector. The cable length is 5 meters (16.4 feet), providing ample flexibility for placement.



5. **Initial Charge:** Allow the solar panel to charge the light for at least one full day before first use to ensure optimal battery performance.

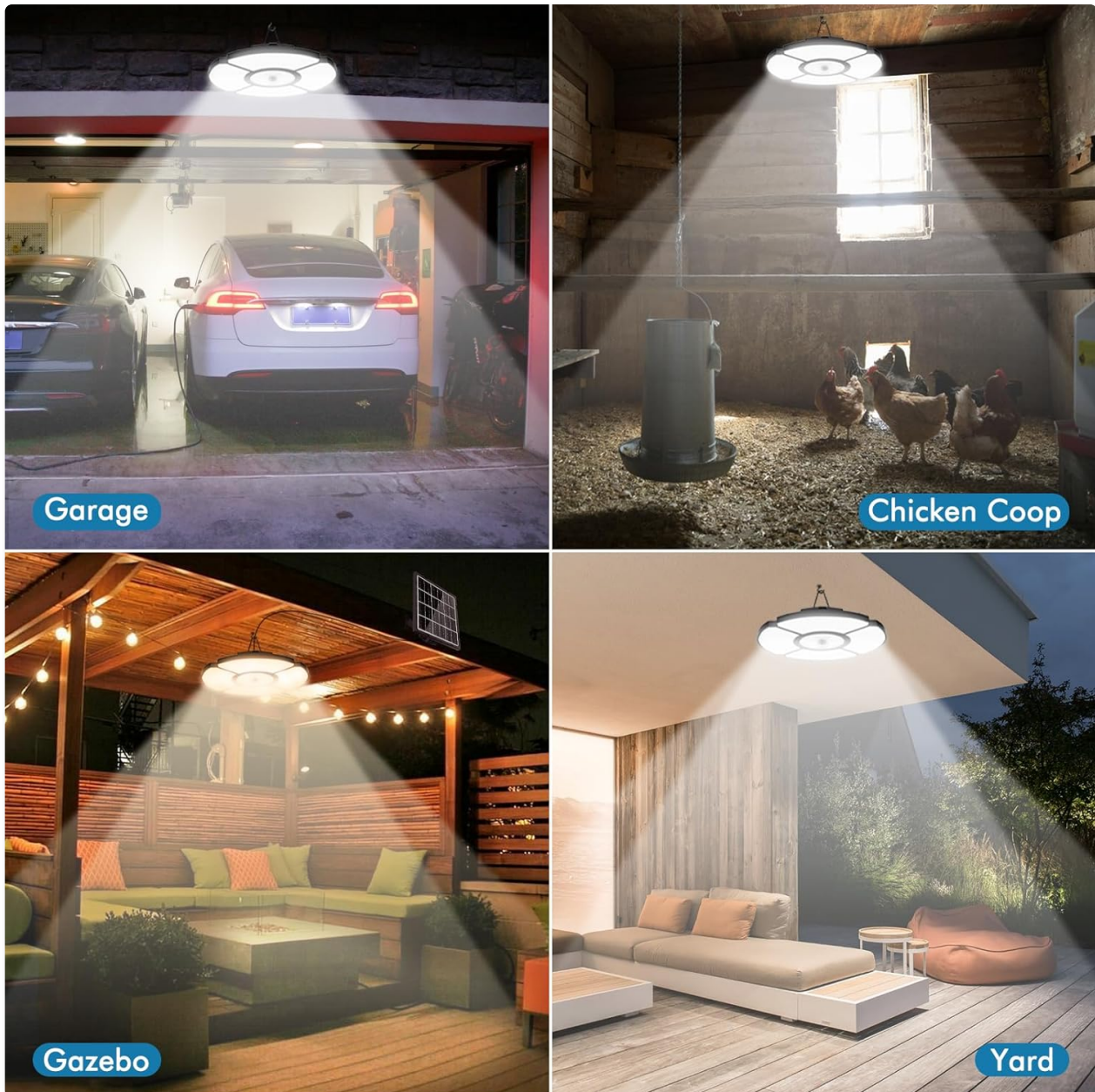


Image 3: Examples of the MEIHUA SL-TY01 Solar Light in use, demonstrating its versatility for illuminating garages, chicken coops, gazebos, and yards.

## 4. CHARGING METHODS

The MEIHUA SL-TY01 Solar Light is equipped with a large 5000 mAh battery and offers two charging options:

- **Solar Charging:** The primary charging method. The solar panel charges the battery in 6-8 hours under direct sunlight.
- **USB Type-C Charging:** For rainy days or when solar charging is insufficient, you can use a USB Type-C cable (not included) to charge the light. A full charge takes 3-4 hours via Type-C.

Once fully charged, the light can operate for 8 to 20 hours depending on the selected mode and brightness level. This solar-powered solution eliminates electricity bills.

# SOLAR LIGHT FOR INDOOR OR OUTDOOR



Image 4: Visual representation of the two charging methods: solar charging (6-8 hours) and USB Type-C charging (3-4 hours), highlighting the 5000 mAh battery.

## 5. OPERATING MODES

The MEIHUA SL-TY01 Solar Light offers 5 distinct lighting modes, controllable via the included remote. An intelligent indicator light helps monitor battery level and charging status.



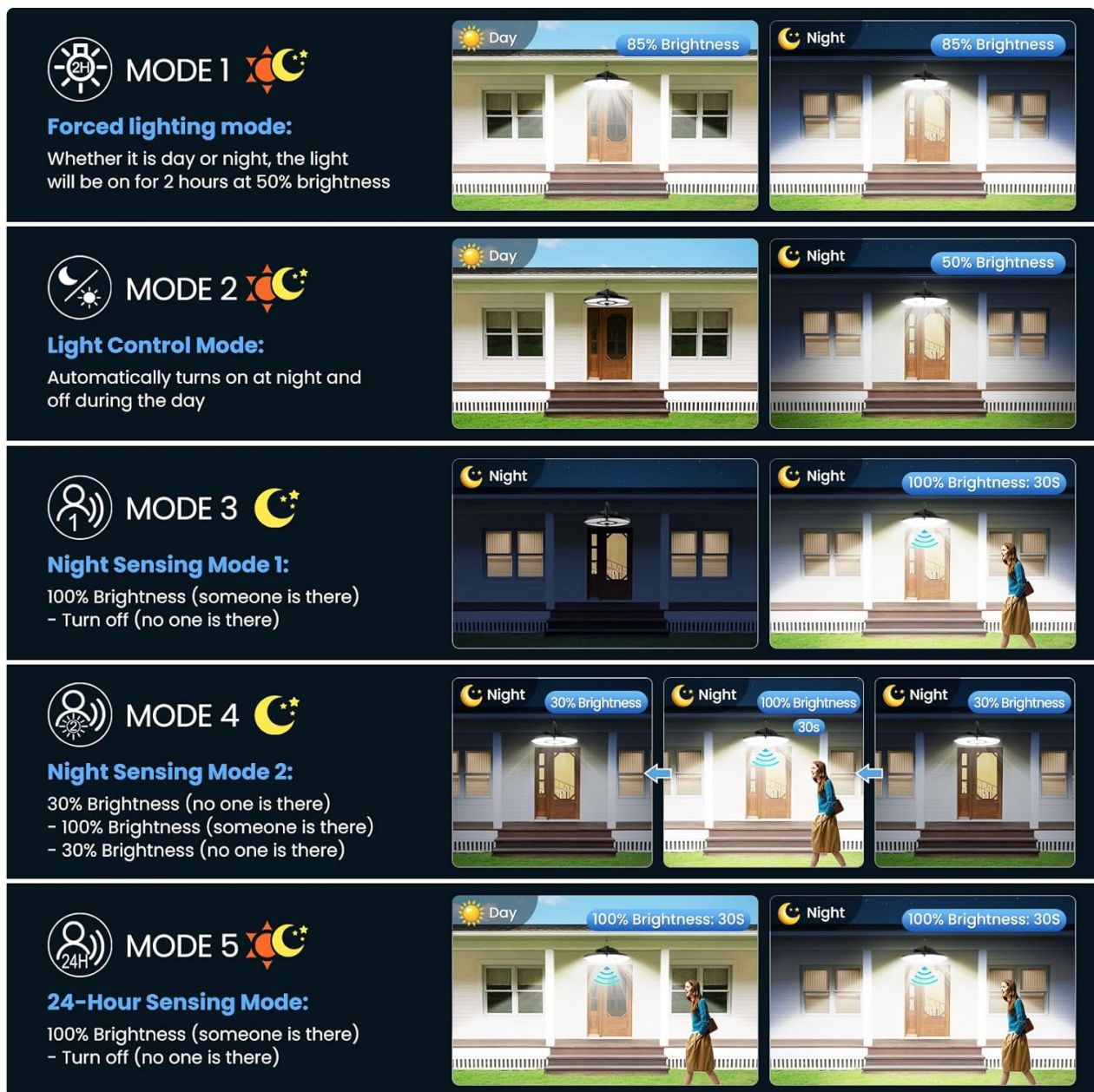


Image 5: Visual guide to the five operating modes, showing light behavior during day and night, with and without motion detection.

## Mode Descriptions:

1. **Forced Lighting Mode (2H):** The light turns on at 50% brightness for 2 hours, regardless of day or night.
2. **Light Control Mode:** The light automatically turns on at 50% brightness at night and turns off during the day.
3. **Night Sensing Mode 1:** When motion is detected at night, the light illuminates at 100% brightness for 30 seconds. It turns off when no motion is detected.
4. **Night Sensing Mode 2:** The light stays at 30% brightness at night when no motion is detected. When motion is detected, it brightens to 100% for 30 seconds.
5. **24-Hour Sensing Mode:** The light illuminates at 100% brightness for 30 seconds when motion is detected, regardless of day or night. It turns off when no motion is detected.

## 6. REMOTE CONTROL FUNCTIONS

The included remote control provides convenient access to various settings:

- **Mode Switching:** Easily cycle through the 5 operating modes.
- **Color Temperature Adjustment:** Adjust the color temperature between 2700K (warm white), 4000K (natural light), and 6500K (cold white). Use the "+/-" buttons for continuous adjustment to achieve your desired ambiance.
- **Timer Function:** Set the light to turn off automatically after 2 hours, 3 hours, or 4 hours.



## 2H/3H/4H Timer OFF Function



Image 6: The remote control for the MEIHUA SL-TY01 Solar Light, demonstrating the 2H/3H/4H timer function and infinitely adjustable color temperature from warm white (2700K) to cold white (6500K).

## 7. MAINTENANCE

To ensure optimal performance and extend the lifespan of your MEIHUA SL-TY01 Solar Light, follow these maintenance guidelines:

- **Clean Solar Panel:** Regularly wipe the solar panel with a soft, damp cloth to remove dust, dirt, leaves, or snow. A clean panel ensures maximum sunlight absorption and efficient charging.
- **Clean Light Unit:** Periodically clean the light unit to maintain brightness and appearance.



- **Check Connections:** Ensure all connections, especially the waterproof connector between the solar panel and light unit, remain secure.
- **Battery Care:** The integrated Lithium-ion battery is designed for long-term use. Avoid prolonged storage in a completely discharged state. If storing for an extended period, ensure the battery is partially charged.
- **Weather Resistance:** The IP54 rating ensures resistance to rain and snow. However, avoid submerging the unit in water.



Heat-Resistant



Cold-Resistant



IP54 Waterproof

Image 7: The MEIHUA SL-TY01 Solar Light is built to withstand various weather conditions, including heat, cold, and is IP54 waterproof, ensuring year-round standby capability.

## 8. TROUBLESHOOTING

If you encounter issues with your MEIHUA SL-TY01 Solar Light, please refer to the following common problems and solutions:

| Problem | Possible Cause | Solution |
|---------|----------------|----------|
|---------|----------------|----------|



| Problem                          | Possible Cause                                | Solution  |
|----------------------------------|---|---|
| Light does not turn on at night. | Insufficient solar charge.                    | Ensure solar panel is in direct sunlight for 6-8 hours. Clean the solar panel. Use Type-C charging if necessary.                    |
| Light flickers or is dim.        | Low battery charge.                           | Allow the solar panel to charge for a full day. Check for obstructions on the solar panel.  |
| Motion sensor not working.       | Sensor obstructed or incorrect mode selected. | Ensure the sensor is clear of obstructions. Verify that a motion-sensing mode (Mode 3, 4, or 5) is selected via the remote control. |
| Remote control not responding.   | Remote battery depleted or obstruction.       | Replace the remote control battery. Ensure there is no obstruction between the remote and the light unit.                           |
| Light turns off too quickly.     | Timer function activated.                     | Check if a timer (2H/3H/4H) is set on the remote control and deactivate if not desired.   |

## 9. SPECIFICATIONS

| Feature                        | Specification                                     |
|--------------------------------|---|
| Brand                          | MEIHUA  |
| Model Number                   | SL-TY01   |
| Product Dimensions (L x W x H) | 20.7 x 11.8 x 18.7 cm (8.15 x 4.65 x 7.36 inches) |
| Weight                         | 1.26 Kilograms (2.78 lbs)                         |
| Battery                        | 1 Lithium-ion (included), 5000 mAh capacity       |
| LEDs                           | 76 High-Brightness LEDs                           |
| Color Temperature              | 2700K - 6500K (Adjustable)                        |
| Luminous Flux                  | 2000 Lumens                                       |
| Waterproof Rating              | IP54  |
| Solar Panel Cable Length       | 5 meters (16.4 feet)                              |
| Charging Time (Solar)          | 6-8 hours (direct sunlight)                       |
| Charging Time (Type-C)         | 3-4 hours (USB-C cable not included)              |
| Operating Time                 | 8-20 hours (depending on mode/brightness)         |

| Feature          | Specification  |
|------------------|--|
| Special Features | Motion Detector, Remote Control, Adjustable Light Blades, Timer Function |
| Material         | Acrylonitrile Butadiene Styrene (ABS)                                    |

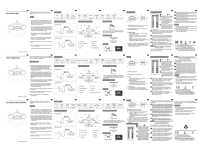



## 10. WARRANTY AND SUPPORT

MEIHUA provides friendly customer service for its products. If you have any questions or concerns regarding your MEIHUA SL-TY01 Solar Light, please do not hesitate to contact us. We are committed to resolving any issues you may encounter.

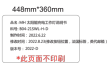

The package includes a user manual in French. For English support or further assistance, please refer to the contact information provided with your purchase or visit the official MEIHUA support channels.

© 2023 MEIHUA. All rights reserved.

### Related Documents - SL-TY01

|   |  |
|---|--|
|  | <p><a href="#">SL-TY01 Solar LED Light User Manual</a></p> <p>User manual for the SL-TY01 Solar LED Light, detailing installation, operation, remote control functions, and safety precautions. Features include adjustable brightness, multiple sensor modes, and color temperature control.</p>  |
|  | <p><a href="#">Meihua B04-21SP-H-D Solar Spotlights User Manual - Outdoor Garden Lighting</a></p> <p>Comprehensive user manual for Meihua B04-21SP-H-D solar spotlights. Learn about installation, operation, features, and specifications for these IP66 waterproof outdoor garden lights available in warm, neutral, and cool white.</p> |
|  | <p><a href="#">MEIHUA 42W LED Security Flood Light with Motion Sensor - B04-21TSFA-H-C User Manual</a></p> <p>User manual for the MEIHUA B04-21TSFA-H-C 42W LED security flood light. Features motion sensor, 3 adjustable heads, IP66 waterproof rating, and 3600LM brightness for outdoor lighting.</p>                                  |
|  | <p><a href="#">Meihua B04-21FLC-H-G LED Work Light User Manual</a></p> <p>User manual for the Meihua B04-21FLC-H-G LED Work Light, detailing specifications, safety warnings, product structure, and usage instructions. Features IP66 waterproof rating and impact-resistant housing.</p>   |



|   |   |
|---|---|
|  | <p><a href="#">Meihua Rechargeable Work Light User Manual and Specifications</a></p> <p>Comprehensive user manual for the Meihua Rechargeable Work Light (SWL-FL01 series), detailing specifications, operation, charging methods (USB &amp; Solar), safety precautions, and product features. Includes model numbers B04-21SWL-H-D and manufacturer information.</p> |
|  | <p><a href="#">Linke Solar Pendant Light - 152LED Motion Sensor Outdoor/Indoor with Remote Control</a></p> <p>Detailed user manual and product overview for the Linke 152LED Solar Pendant Light. Features motion sensor, remote control, adjustable color temperature (2700K-6500K), 4 lighting modes, and IP54 rating. Ideal for gardens, garages, and patios.</p>  |