

## spovan FA135-120B

# spovan 35mm to 120mm Film Spool Adapter Instruction Manual

Model: FA135-120B

## INTRODUCTION

The spovan 35mm to 120mm Film Spool Adapter kit allows photographers to use standard 35mm film in cameras designed for 120 medium format film. This adapter centers a 35mm film canister within a 120 format spool, enabling unique photographic effects, such as exposing the film's sprocket holes, which are typically not visible in standard 35mm photography. This manual provides instructions for the proper setup, operation, and care of your film spool adapters.

## PACKAGE CONTENTS

Please verify that all items are present in your package:

- 2 sets of 35mm film canister adapters (consisting of 2 film take-up spools and 4 adapter pieces)

*Note: Film and camera are not included with this adapter kit.*

## SETUP INSTRUCTIONS

Follow these steps to prepare your 35mm film for use in a 120 medium format camera:

1. **Identify Adapter Components:** Each set of adapters consists of two end pieces. One piece has a longer stem designed to fit into the film canister's take-up side, and the other has a shorter stem for the supply side.
2. **Attach Adapters to 35mm Film Canister:** Carefully slide one adapter piece onto each end of a 35mm film canister. Ensure the adapters are securely seated and centered on the film canister's spools. The longer-stemmed adapter typically goes on the side that will act as the take-up spool in the 120 camera, and the shorter-stemmed adapter on the supply side.



Image: A 35mm film canister with the spovan adapters being attached to both ends, illustrating the assembly process.

3. **Prepare Take-Up Spool:** Take one of the empty 120 film take-up spools (included in the kit) and ensure it is ready to receive the adapted 35mm film.

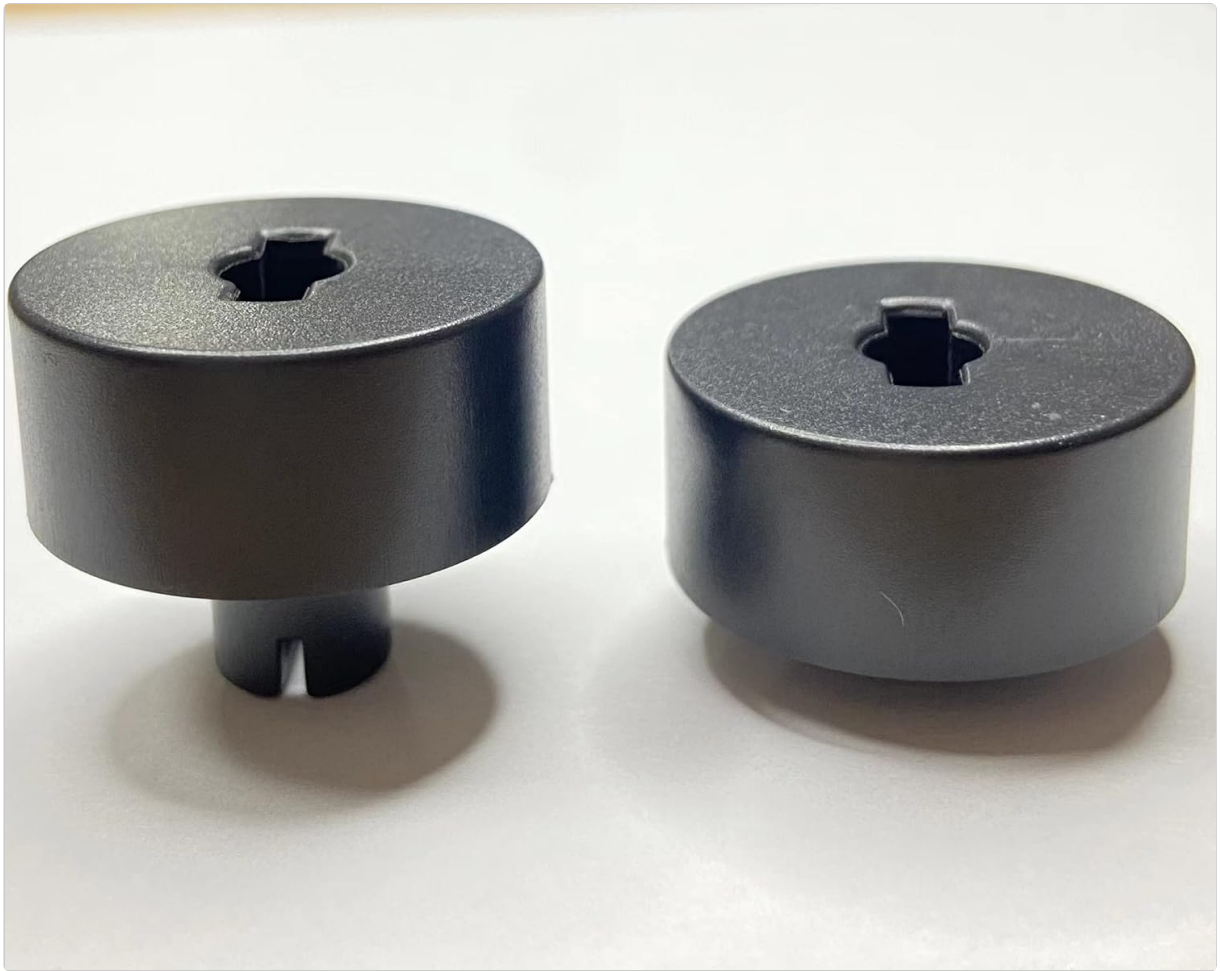


Image: Two spovan 35mm to 120mm film spool adapters, showing their individual components.

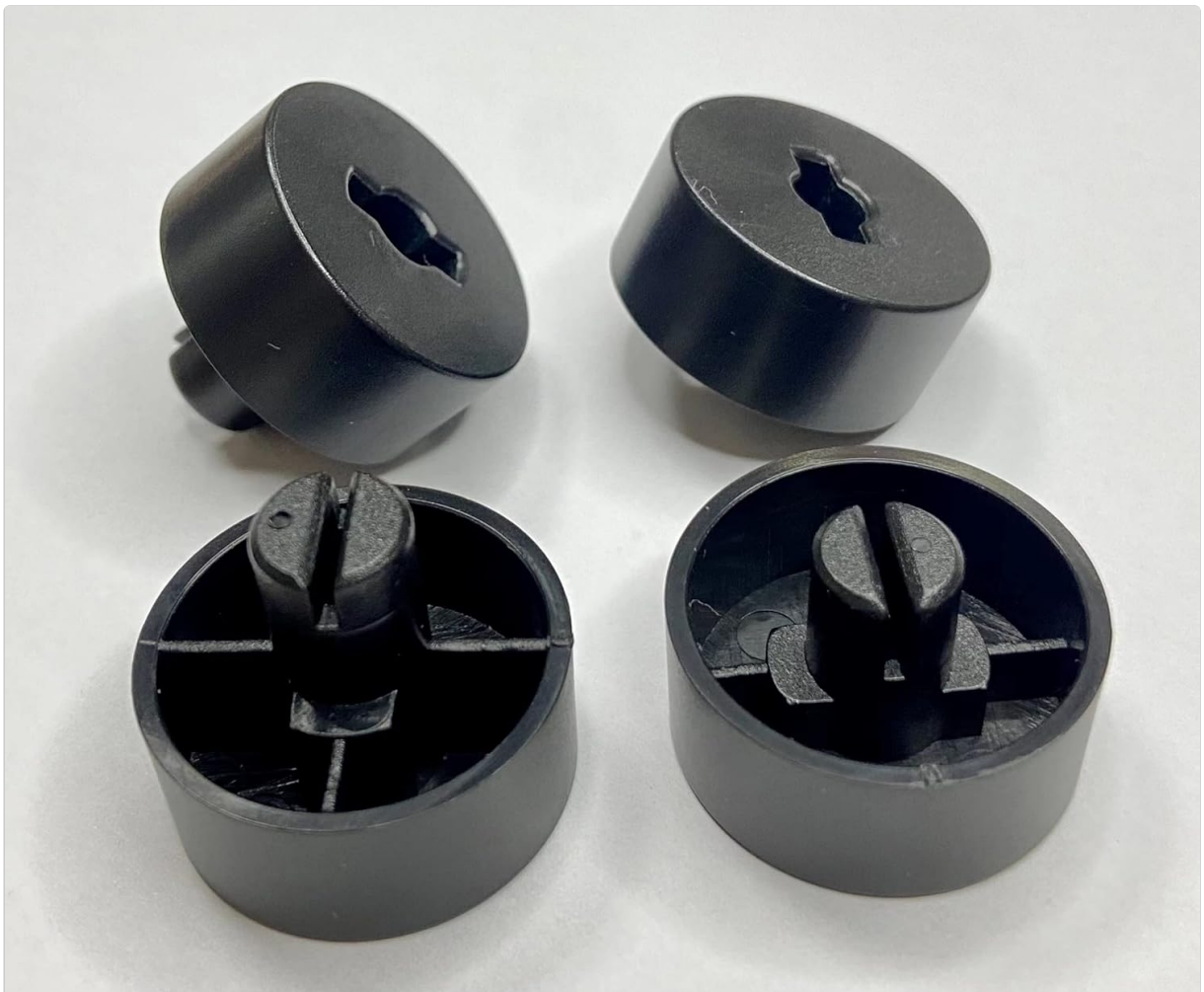


Image: Four spovan 35mm to 120mm film spool adapters, displaying both top and bottom views of the components.

## OPERATING INSTRUCTIONS

---

Once the 35mm film canister is fitted with the adapters, it can be loaded into a 120 medium format camera:

1. **Load into Camera:** In a darkroom or changing bag, load the adapted 35mm film canister into the supply side of your 120 medium format camera. The adapters should fit snugly into the 120 film chamber.
2. **Attach to Take-Up Spool:** Pull the leader of the 35mm film across the camera's film gate and attach it to the empty 120 take-up spool on the other side. Ensure the film is taut and properly aligned.
3. **Close Camera Back:** Close the camera back securely.
4. **Advance Film:** Advance the film using your camera's winding mechanism. Since 35mm film is narrower than 120 film, the entire height of the 35mm film, including the sprocket holes, will be exposed. This creates a distinctive aesthetic.
5. **Shooting:** Take photographs as you normally would with your 120 medium format camera. Be aware that the frame counter on your 120 camera will not accurately reflect the number of 35mm exposures. You will typically get more exposures than a standard 120 roll.
6. **Unloading:** After exposing the entire roll, unload the film in a darkroom or changing bag. The 35mm film will be wound onto the 120 take-up spool. Remove the 35mm film from the 120 spool and return it to its original canister or a light-tight container for processing.

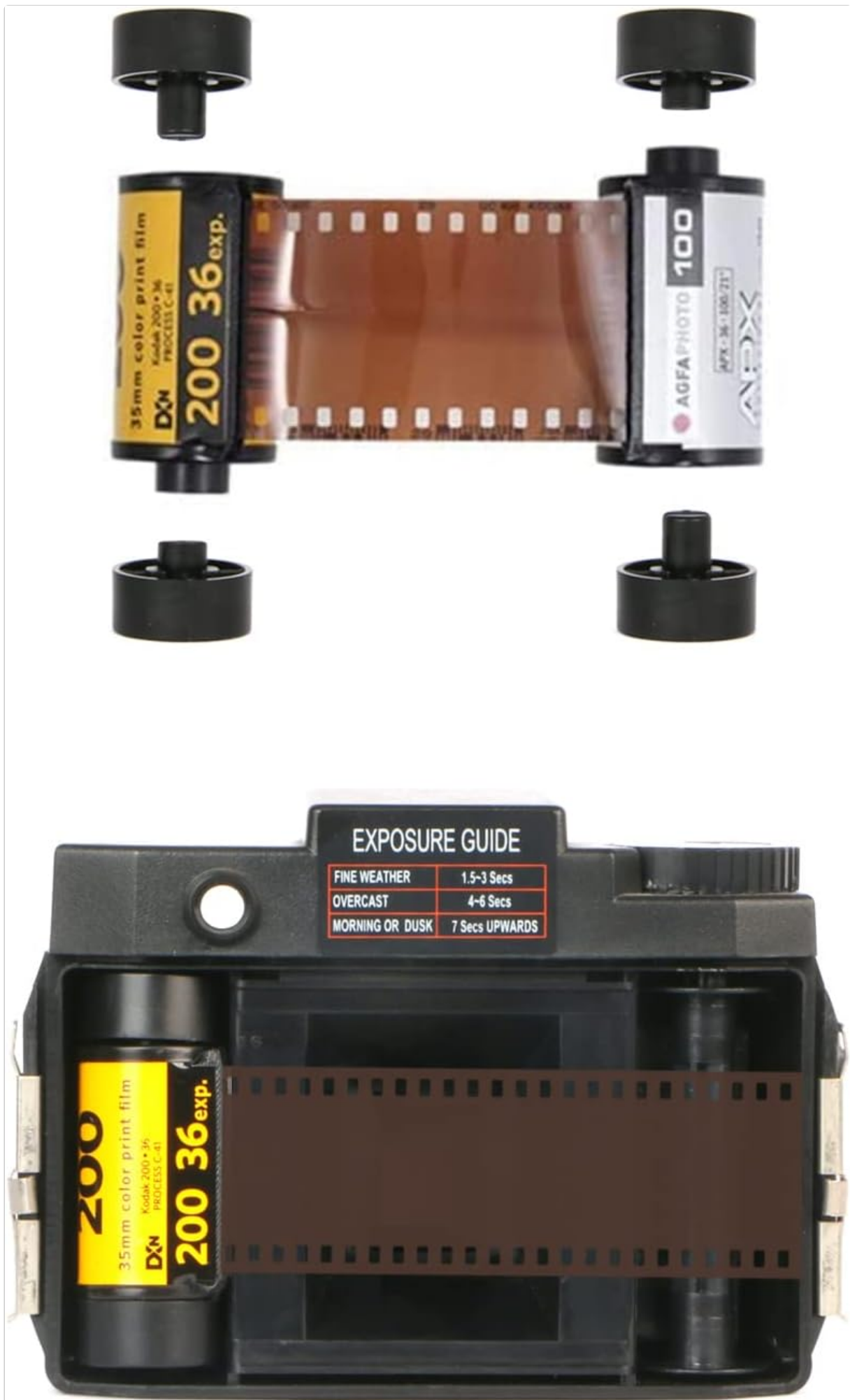


Image: A diagram illustrating a 35mm film roll with adapters loaded into a 120 medium format camera, showing the film path and exposure area, including the sprocket holes.

## MAINTENANCE

---

These adapters are designed for durability and require minimal maintenance:

- **Cleaning:** If the adapters become dirty, wipe them gently with a soft, dry cloth. Avoid using harsh chemicals or abrasive materials, as these can damage the plastic.
- **Storage:** Store the adapters in a clean, dry place away from direct sunlight and extreme temperatures when not in use.
- **Inspection:** Periodically inspect the adapters for any signs of wear or damage. While made of durable plastic, excessive force or improper handling can cause issues.

## TROUBLESHOOTING

---

If you encounter issues while using the film spool adapters, consider the following:

- **Adapters do not fit 35mm film canister:** Some reloadable 35mm film cartridges may have slightly different dimensions than standard cartridges. If the adapters are too tight, a small amount of material may need to be carefully filed or sanded from the adapter's inner slot to achieve a proper fit. Exercise caution to avoid over-filing.
- **Adapters do not fit in 120 camera:** While compatible with most 120 medium format cameras (e.g., Pentax, Rolleiflex, Mamiya, Hasselblad, Makina, Bronica), these adapters may not work with cameras that have intricate or non-standard loading mechanisms. Examples of cameras that may have compatibility issues include Mamiya m645, Mamiya 7, and RB67. Consult your camera's manual or manufacturer if you experience persistent fitting problems.
- **Film not advancing smoothly:** Ensure the film leader is securely attached to the take-up spool and that the film path is clear of any obstructions. Verify that the adapters are properly seated on the 35mm film canister and within the camera's film chamber.

## SPECIFICATIONS

---

Feature	Detail
Model Number	FA135-120B
Material	Plastic
Item Weight	0.634 ounces
Package Dimensions	2.68 x 2.64 x 1.14 inches
Compatibility	Most 120 Medium Format Cameras (e.g., Pentax, Rolleiflex, Mamiya, Hasselblad, Makina, Bronica)
Incompatibility Note	May not work with cameras with intricate loading mechanisms (e.g., Mamiya m645, Mamiya 7, RB67)

## COMPATIBILITY

---

The spovan 35mm to 120mm Film Spool Adapters are designed for broad compatibility with many 120 medium format film cameras. This includes, but is not limited to, models from brands such as Pentax, Rolleiflex, Mamiya, Hasselblad, Makina, and Bronica.

However, due to variations in camera design, these adapters may not be suitable for all 120 medium format cameras, particularly those with highly intricate or unique film loading mechanisms. Known examples of cameras that may experience compatibility issues include the Mamiya m645, Mamiya 7, and certain RB67 models. Users are advised to check their camera's specific loading requirements if they encounter difficulties.

## **WARRANTY AND SUPPORT**

---

For any questions, concerns, or support regarding your spovan 35mm to 120mm Film Spool Adapters, please contact the manufacturer, spovan, through their official channels or the retailer from whom the product was purchased. Specific warranty details may vary by region and retailer.