

ELEGANT FP30-CO

ELEGANT FP30-CO Pivot Shower Door Instruction Manual

Model: FP30-CO | Dimensions: 30 in. W x 72 in. H | Finish: Matte Black

1. SAFETY INFORMATION

- Always wear safety glasses during installation.
- Handle glass panels with extreme care. Tempered glass is strong but can shatter if struck at the edges.
- Ensure the installation area is clear of obstructions and debris.
- Professional installation is recommended for optimal safety and performance.
- Do not use abrasive cleaners or tools that could scratch the glass or finish.

2. PACKAGE CONTENTS

Before beginning installation, verify that all parts are present and undamaged. Refer to the parts diagram in your included manual for specific component identification.

- Tempered Glass Panel (1/4 inch clear)
- Wall Profiles (Matte Black)
- Door Handle (Matte Black)
- Water Retaining Strips (Bottom and Magnetic)
- Screws, Wall Plugs, and Screw Covers
- Installation Hardware (Hinges, etc.)

3. TOOLS REQUIRED

- Drill (with 6mm / 0.2362 inch drill bit for tile/masonry)

- Hammer
- Screwdriver (Phillips head recommended)
- Measuring Tape
- Level
- Pencil or Marker
- Silicone Sealant (mold-resistant, waterproof)
- Caulking Gun
- Utility Knife

4. INSTALLATION INSTRUCTIONS

This section provides a step-by-step guide for installing your ELEGANT Pivot Shower Door. For a visual guide, please refer to the official installation video below.

Official ELEGANT Pivot Shower Door Installation Steps video. This video demonstrates the complete installation process for the FP series shower enclosure.

Installation Steps:

1. Position and Mark Wall Profiles:

Position the wall profile (S10) vertically on the wall according to your model size. Mark the wall with the hole positions on the profile. Ensure the profile is perfectly level. Mark hole positions on the wall using the wall profile, making sure holes are not too close to tile edges.

REVERSABLE INSTALLATION

to meet your installation



Image: Reversible installation options for the shower door, showing how it can be configured for left or right opening.

WIDTH ADJUSTMENT

Adjustable to **0.75"** on each side to fit different bathroom styles

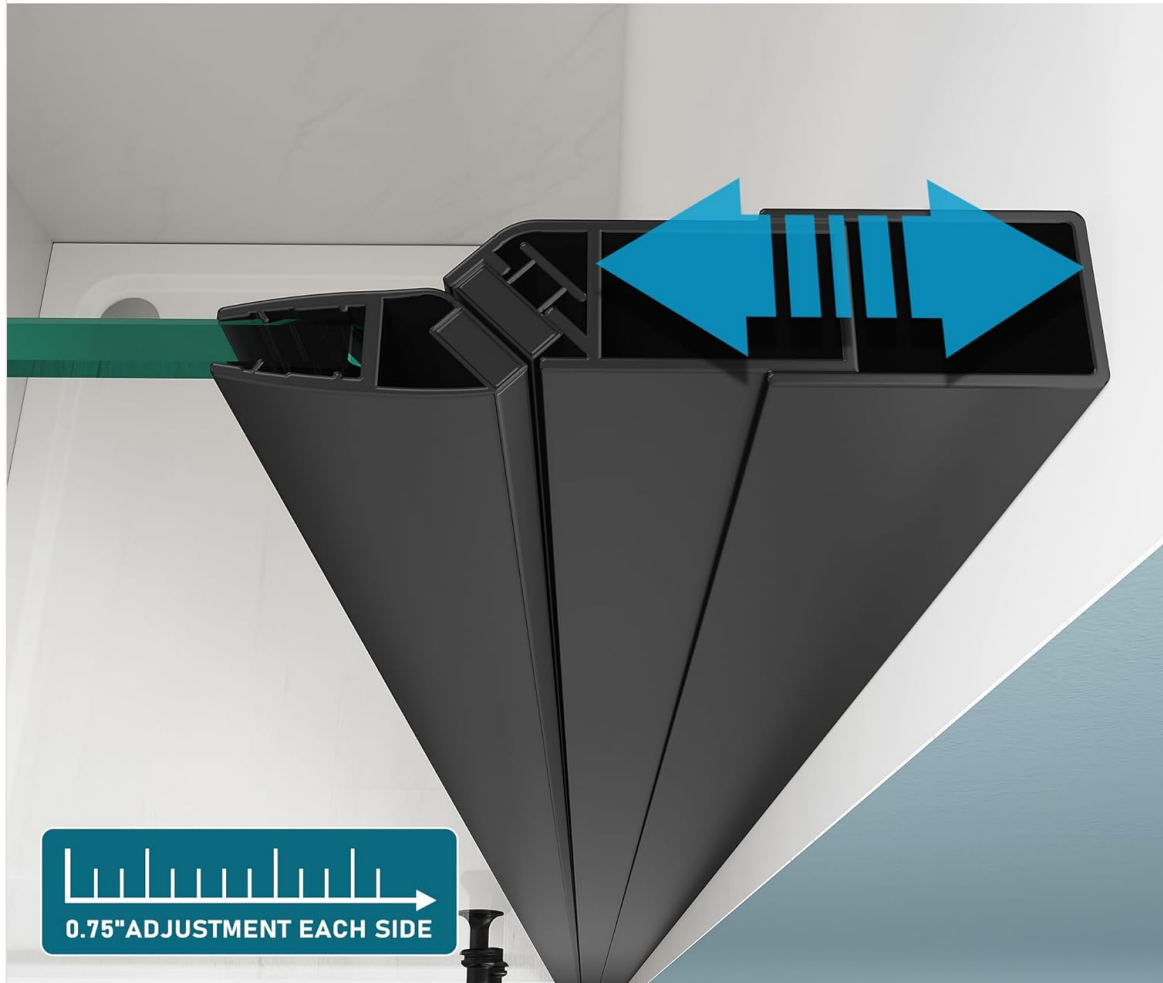


Image: Detail of the width adjustment feature, allowing up to 0.75 inches of adjustment on each side for a precise fit.

2. Drill Holes and Insert Wall Plugs:

Drill holes at your marked positions with a 6mm (millimeter) drill bit (0.2362"). Insert the wall plugs (S02) into the holes with a hammer.

3. Attach Wall Profiles:

Attach the wall profile to the wall with screws (S03) and put on the screw cover. Repeat the same operation on the other side.

4. Insert Fixed Panel:

Insert the fixed panel into the wall profile (S09).

5. Secure Fixed Panels:

Secure the fixed panels with wall profiles using screws (S04, S05), then put on the decorative covers.

6. Install Bottom Water Retaining Strip:

Install the bottom water retaining strip (S12) along the base of the fixed panel.

BOTTOM SEAL STRIP

No need to worry about leaking in the shower



Image: The bottom seal strip ensures water retention, keeping your bathroom dry.

7. Install Magnetic Water Retaining Strips:

Install the magnetic water retaining strips (S08) on the door panel.

MAGNETIC STRIP

Holds the shower door securely and prevents water from spilling out

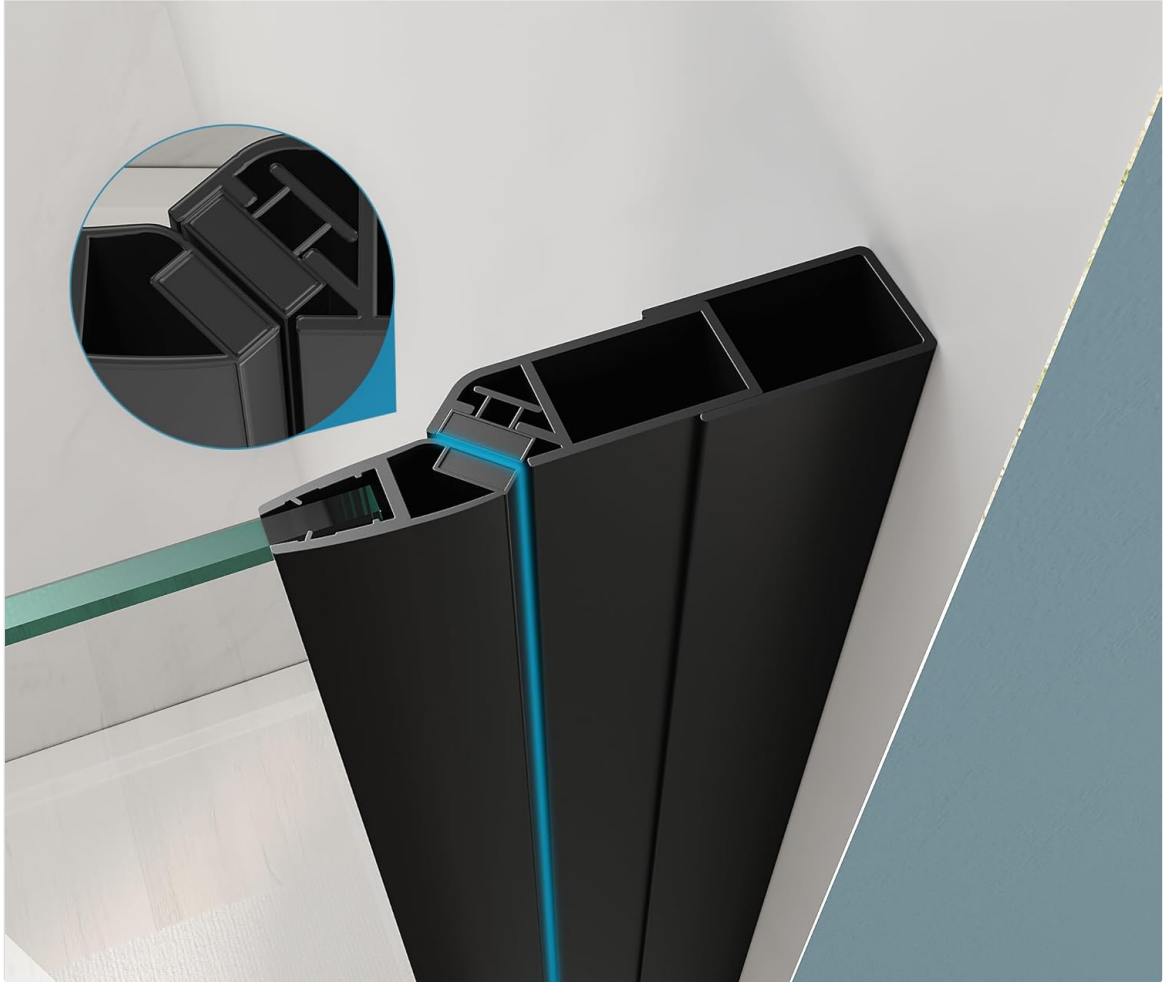


Image: Detail of the magnetic strip, providing a secure closure and preventing water spillage.

8. Install Handles:

Install the handles (S11) on the moving panels.

STAINLESS STEEL HANDLE

Not easily corroded and rusted, long-lasting



Image: The durable stainless steel handle provides a simple and reliable way to open and close the door.

9. Apply Silicone Sealant:

Apply silicone sealant to the outside edges of the profiles. Allow at least 24 hours for the sealant to dry before use. This step is crucial for a watertight seal.

Advanced Installation Tips (from user experience):

- **Pre-Caulking for Stronger Seal:** Instead of caulking at the very end, apply two thick beads of mold-resistant silicone caulk to the backside of the wall profile that goes against the tile wall. Gently press the profile against the wall, allowing the caulk to squish out. Then, screw the profile into place. This creates a uniform, 100% watertight seal behind the entire length and width of the railing, distributing the door's weight more effectively. Clean off excess caulk immediately.
- **Curing Time:** After pre-caulking and securing the first wall profile, allow at least 24 hours for the caulk to fully cure before proceeding with hanging the door or installing other components. This ensures maximum strength and waterproofing.
- **Adjusting for Uneven Walls:** The door-hinge railing does not have to go all the way inside the wall railing. You can gain additional width (e.g., 1/2 inch) by partially inserting the door-hinge railing into the wall-mount railing. Use this flexibility to achieve a perfectly level and aligned door, especially if your shower walls are not perfectly straight or level. Remember to caulk all joints between metal pieces with clear silicone before tightening screws.

5. OPERATING INSTRUCTIONS

The ELEGANT Pivot Shower Door is designed for smooth and easy operation.

- To open the door, gently pull the handle outwards. The door pivots up to 90 degrees, providing a wide walk-in opening.
- To close the door, push the handle inwards until the magnetic strips engage, securing the door in the closed position.
- The door is reversible for left or right-hand installation, allowing flexibility to suit your bathroom layout.



Image: The pivot door partially open, illustrating its smooth swing mechanism.



Image: The shower door fully open, showcasing the generous entry space.

6. MAINTENANCE AND CLEANING

Proper care will ensure the longevity and appearance of your shower door.

- **Glass Cleaning:** Clean glass panels regularly with a soft cloth and a non-abrasive glass cleaner. Avoid cleaners containing harsh chemicals, ammonia, or abrasive particles.
- **Hardware Cleaning:** Wipe down metal profiles and handles with a soft, damp cloth. For stubborn spots, use a mild, non-abrasive cleaner specifically designed for metal finishes.
- **Seal Maintenance:** Periodically inspect the water retaining strips and silicone seals for wear or damage. Replace them if necessary to maintain a watertight enclosure.
- **Avoid Abrasives:** Never use abrasive brushes, scouring pads, or harsh chemicals on any part of the shower door, as this can damage the finish and glass.

7. TROUBLESHOOTING

If you encounter any issues with your shower door, refer to the following common problems and solutions:

Problem	Possible Cause	Solution
Water leakage from the bottom or sides.	Improperly installed or damaged water retaining strips/seals; insufficient silicone sealant.	Ensure all water retaining strips are correctly seated. Reapply silicone sealant to exterior joints, allowing 24 hours to cure. Check for gaps in the bottom seal strip.
Door does not close securely.	Misaligned magnetic strips; obstruction.	Check if the magnetic strips are aligned properly. Adjust the wall profiles slightly if needed (within the adjustment range) to ensure a tight seal. Remove any obstructions.
Door feels loose or wobbly.	Loose screws in wall profiles or hinges.	Carefully tighten all screws securing the wall profiles and hinges. Do not overtighten.
Difficulty opening or closing the door.	Hinges require lubrication; misalignment.	Apply a small amount of silicone-based lubricant to the hinges. Check for proper alignment of the door panel within the frame.

8. SPECIFICATIONS

- **Brand:** ELEGANT
- **Model:** FP30-CO
- **Dimensions:** 0.25 x 30 x 72 inches (Glass thickness x Width x Height)
- **Walk-in Opening:** 23 inches
- **Material:** 1/4 inch (6mm) Clear Tempered Glass (ANSI Z97.1 certified), Aluminum Profiles
- **Finish:** Matte Black
- **Item Weight:** 46.9 pounds
- **Adjustability:** 0.75 inches (19mm) on each side for width adjustment
- **Door Swing:** Outward up to 90 degrees

9. WARRANTY AND SUPPORT

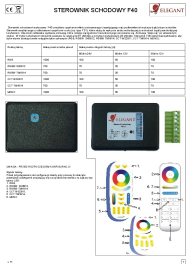
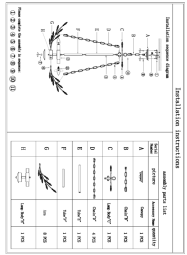
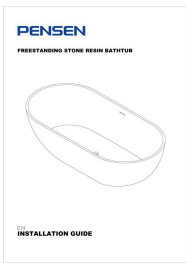


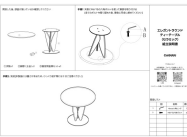
ELEGANT stands behind the quality of its products. For specific warranty details, please refer to the documentation included with your purchase.

If you require assistance with online orders or product support, please:

- Tap "Your Account" - "Order Detail" - "Message Center" on the platform where you made your purchase.
- You may also reach us through email at sunnyshowerusa@gmail.com.

Thank you for being a valued ELEGANT customer.

Related Documents - FP30-CO

	<p>Sterownik Schodowy F40 - Instrukcja Obsługi i Konfiguracji</p> <p>Szczegółowa instrukcja obsługi i konfiguracji sterownika schodowo-korytarzowego F40 firmy ELEGANT, przeznaczonego do sterowania taśmami LED RGB, RGBW i CCT, wraz ze schematami połączeń.</p>
	<p>Everly Quinn 6-Light Black Crystal Chandelier Installation Guide</p> <p>Detailed installation instructions for the Everly Quinn 6-Light Dimmable Elegant Black Crystal Chandelier, including a parts list and assembly sequence diagram.</p>
	<p>Pensen Freestanding Stone Resin Bathtub Installation Guide</p> <p>Comprehensive installation guide for the Pensen Freestanding Stone Resin Bathtub. This document provides detailed instructions for installing your elegant oval stand-alone soaking tub on wooden or concrete floors, including product kit contents, pre-installation checks, and essential care instructions for maintaining its flawless matte white finish.</p>
	<p>Wade Logan Brokaw Elegant Dining Cabinet Installation Manual</p> <p>Comprehensive installation guide for the Wade Logan Brokaw Dining Cabinet, featuring detailed steps, parts list, safety warnings, and warranty information. Ensure correct assembly for optimal stability and longevity.</p>
	<p>Woodcraft Elegant Beauty Rollerball & Fountain Pen Kits Assembly Instructions</p> <p>A comprehensive guide for assembling Woodcraft's Elegant Beauty Rollerball and Fountain Pen Kits, detailing setup, blank preparation, gluing, turning, finishing, and component assembly steps.</p>
	<p>CAGUUU Elegant Round Tea Table Assembly Instructions (Ceramic & Glass)</p> <p>Comprehensive assembly guide for the CAGUUU Elegant Round Tea Table, available in ceramic and glass finishes. Includes parts list and step-by-step instructions for easy setup.</p>