

Manuals+

[Q & A](#) | [Deep Search](#) | [Upload](#)

[manuals.plus](#) /

› [LASUNEY](#) /

› [LASUNEY Wireless Earbuds \(Model B0BMTYF5P5\) Instruction Manual](#)

LASUNEY B0BMTYF5P5

LASUNEY Wireless Earbuds Instruction Manual

Model: B0BMTYF5P5

INTRODUCTION

Thank you for choosing LASUNEY Wireless Earbuds. This manual provides detailed instructions on how to set up, operate, and maintain your earbuds to ensure optimal performance and longevity. Please read this manual carefully before use and retain it for future reference.

PACKAGE CONTENTS

Please check the package for the following items:

- LASUNEY Wireless Earbuds (Left & Right)
- Charging Case
- USB-C Charging Cable
- Eartips (Small, Medium, Large)
- User Manual
- Storage Bag

SETUP

1. Initial Charging

Before first use, fully charge the earbuds and the charging case. Connect the provided USB-C cable to the charging port on the case and a power source. The indicator lights on the case will show the charging status. The earbuds will charge automatically when placed inside the case.



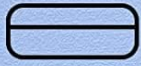
Image: USB-C charging port on the charging case.

35H SUPERIOR PLAYTIME

Charge on you go, meet your needs for the day



5 Hrs
Per Charge



30Hrs
Battery Life

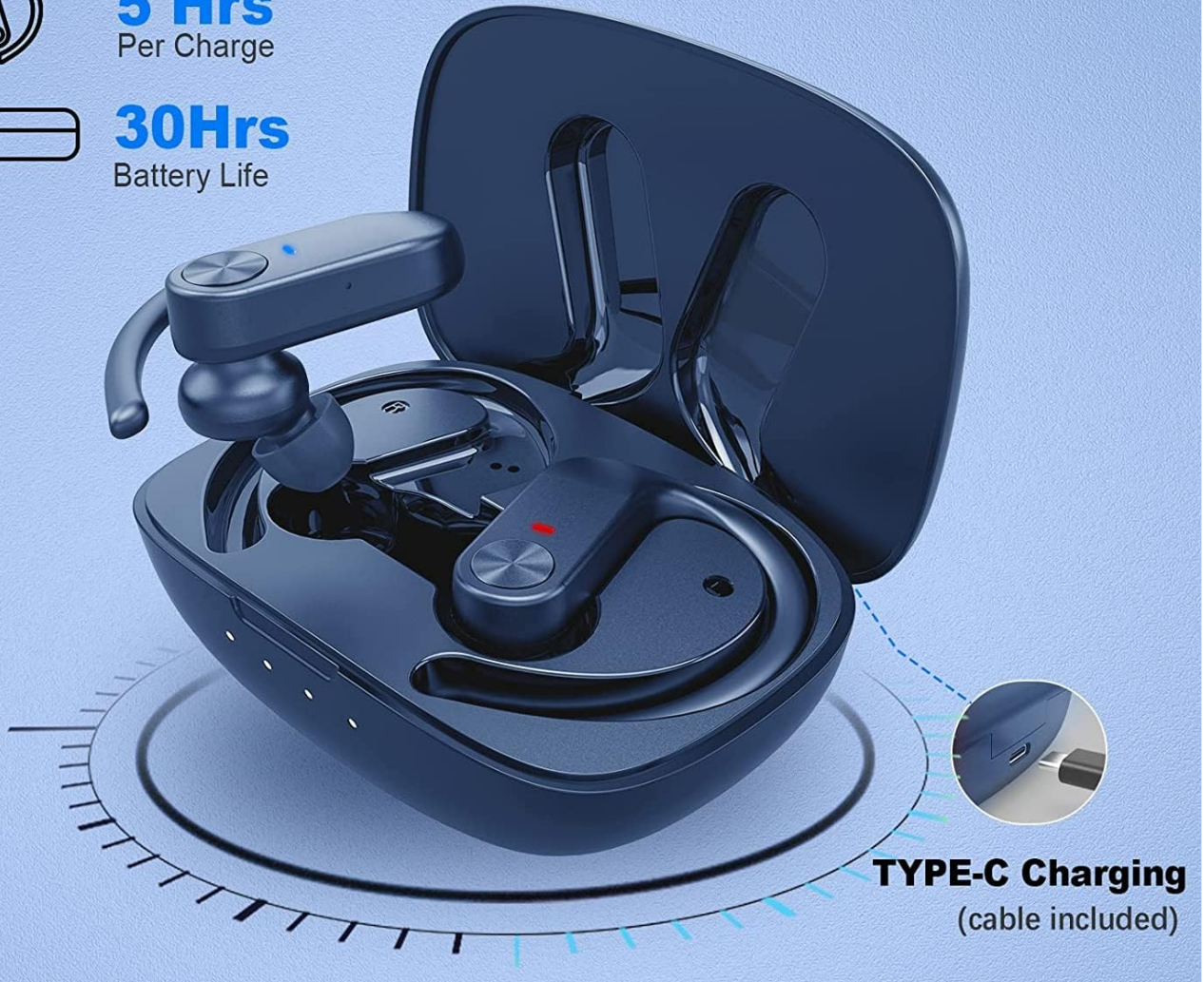


Image: Earbuds in charging case, highlighting Type-C charging and battery life.

2. Wearing the Earbuds

For optimal sound quality and comfort, choose the correct size eartips and ensure the ear hooks are securely positioned over your ears.

1. Choose the right size eartips (S/M/L) and insert the earbuds into your ear canal.
2. Place the ear hook of the earbud above your ear.
3. Twist the ear hook to a comfortable and secure position.

Comfy and Secure Fit Design

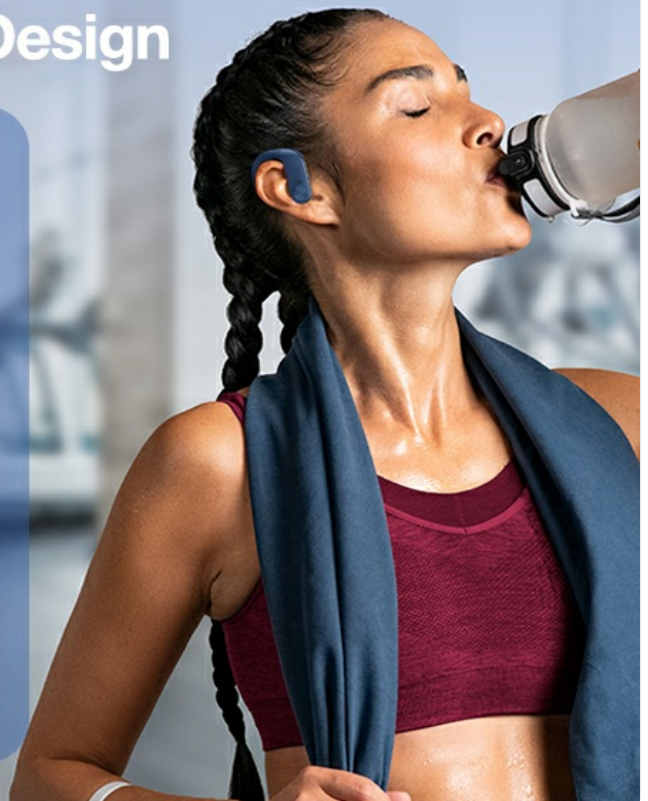


Image: Guide for comfortable and secure earbud fit.

3. Pairing with Your Device

The earbuds feature one-step auto-pairing for convenience.

1. Take the earbuds out of the charging case. They will automatically enter pairing mode.
2. On your device (smartphone, tablet, etc.), go to Bluetooth settings.
3. Search for Bluetooth devices and select "C3" from the list to connect.
4. Once connected, the earbuds are ready for use.

ONE STEP AUTO PAIRING

Take out the earbuds from the charging case
Search Bluetooth "C3" and connect

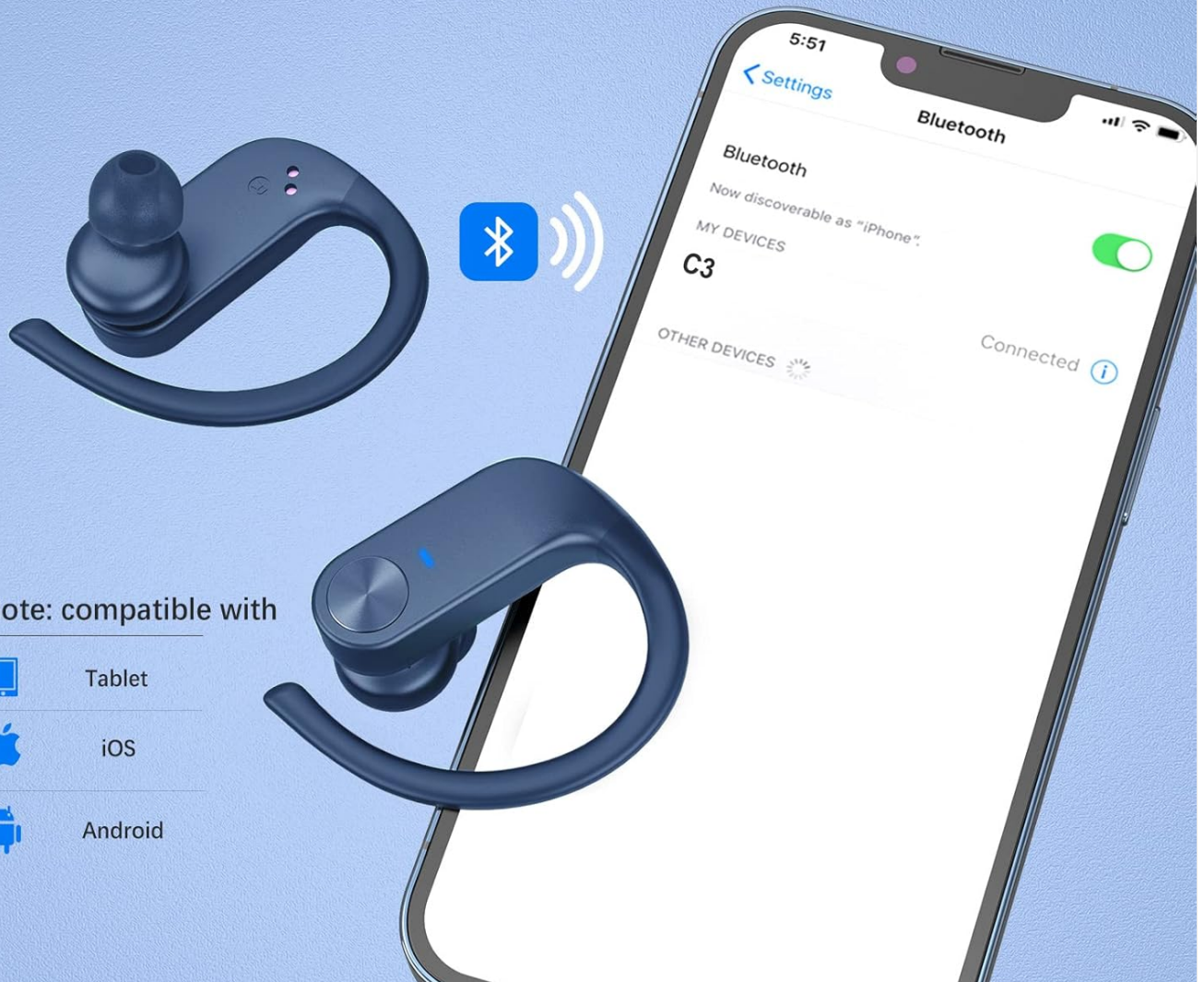


Image: One-step auto-pairing process with a mobile device.

OPERATING INSTRUCTIONS

Touch Controls

The earbuds feature a single multi-function touch button on each earbud for easy control.

SMART TOUCH CONTROL WITH ONE BUTTON

Reject the tedious operation,
one key tap to attain multiple functions, freeing your hands



Image: Smart touch control functions diagram.

Earbud Touch Control Functions

Action	Function
Press and Hold (approx. 3 seconds)	Power On / Off
Single Tap	Play / Pause Music, Answer a Call
Double Tap (Left Earbud)	Previous Song, Volume -
Double Tap (Right Earbud)	Next Song, Volume +
Triple Tap	Activate Voice Assistant (Siri/Google Assistant)
Press and Hold (during call)	Reject a Call, Hang up a Call

Active Noise Reduction for Calls

The earbuds are designed with active noise reduction technology to minimize ambient noise during calls, ensuring clear conversations in various environments.

ERGONOMIC DESIGN FOR SPORTS

Comfort and adjustable ear hooks, no need to worry about falling down



Soft Eartips(S/M/L)



Secure Ear hooks



Storage Bag
Come with a portable bag

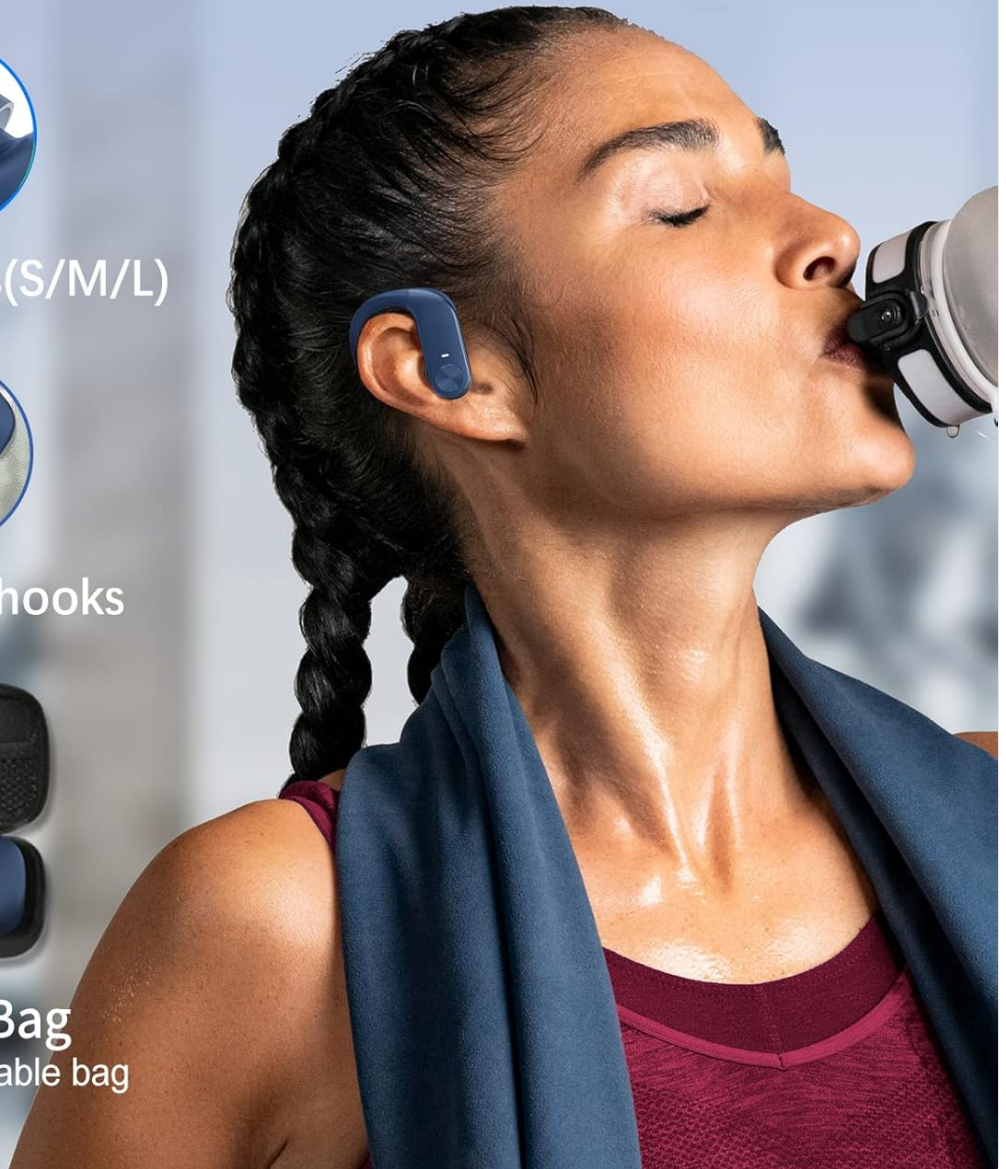


Image: Active noise reduction in various settings.

MAINTENANCE

Cleaning

- Regularly clean the eartips and earbud surfaces with a soft, dry, lint-free cloth.
- Do not use harsh chemicals, cleaning solvents, or strong detergents.
- Ensure the charging contacts on both the earbuds and the case are clean and dry to prevent charging issues.

Storage

- When not in use, store the earbuds in their charging case to protect them and keep them charged.
- Keep the earbuds and charging case in a cool, dry place, away from extreme temperatures and direct sunlight.

- Use the provided storage bag for added protection during travel.

ACTIVE NOISE REDUCTION, ACHIEVE CLEAR CALLS

Effective shielding the ambient noises,
enjoying high quality conversations anytime, anywhere



Image: Ergonomic design features and included storage bag.

TROUBLESHOOTING

Common Issues and Solutions

Problem	Possible Solution
Earbuds not pairing	Ensure earbuds are charged. Place them back in the case, then take them out to re-enter pairing mode. Turn off and on your device's Bluetooth. Forget "C3" from your device's Bluetooth list and re-pair.
No sound from one earbud	Check if both earbuds are charged. Try placing both earbuds back in the charging case and then taking them out again. Re-pair the earbuds with your device.
Earbuds not charging	Ensure the charging cable is securely connected. Check if the charging contacts on both earbuds and case are clean and free of debris. Try a different USB-C cable or power adapter.

Problem	Possible Solution
Poor sound quality	Ensure eartips are properly sealed in your ear canal. Clean any earwax from the eartips. Move closer to your connected device to avoid interference.
Touch controls unresponsive	Ensure your fingers are clean and dry. Try restarting the earbuds by placing them in the case and taking them out.

SPECIFICATIONS

Product Specifications

Feature	Detail
Brand	LASUNEY
Model	B0BMTYF5P5
Connectivity Technology	Bluetooth
Wireless Communication Technology	Bluetooth
Ear Placement	In Ear
Form Factor	Over Ear (with earhooks)
Control Type	Touch Control
Water Resistance Level	Waterproof
Battery Life (Earbuds)	Up to 6 Hours per charge
Total Playtime (with Charging Case)	Up to 35 Hours
Charging Port	USB-C
Material	Silicone
Item Weight	4.9 ounces
Package Dimensions	5.55 x 4.84 x 2.13 inches

WARRANTY AND SUPPORT

For warranty information or technical support, please refer to the contact details provided with your purchase or visit the official LASUNEY website. Please have your product model number (B0BMTYF5P5) ready when contacting support.