

Manuals+

[Q & A](#) | [Deep Search](#) | [Upload](#)

Manuals.plus /

› [Bitmore](#) /

› Bitmore Aural Buds Wireless Bluetooth Earbuds User Manual

Bitmore BM-IEBTEC-B, BM-IEBTEC-G, BM-IEBTEC-R

Bitmore Aural Buds Wireless Bluetooth Earbuds User Manual

Model: BM-IEBTEC-B, BM-IEBTEC-G, BM-IEBTEC-R

Brand: Bitmore

INTRODUCTION

Thank you for choosing Bitmore Aural Buds Wireless Bluetooth Earbuds. These earbuds are designed for an enhanced audio experience while prioritizing environmental sustainability. Made from BPA-free recycled plastic and 35% wheat straw, they offer a 10-meter wireless range, integrated volume control, and a microphone for hands-free calls. The 75 cm connecting cable ensures comfortable wear around your neck. With a quick 1.5-hour charge, you can enjoy up to 4 hours of high-quality audio playback, making them ideal for daily use and travel.

SAFETY INFORMATION

Please read all safety instructions carefully before using this product.

- Do not expose the earbuds to extreme temperatures, humidity, or liquids.
- Avoid dropping, impacting, or disassembling the device.
- Keep out of reach of children and pets.
- Do not use abrasive cleaners or solvents to clean the earbuds.
- Listen at moderate volume levels to prevent hearing damage. Prolonged exposure to loud sounds can cause permanent hearing loss.
- Do not use the earbuds in situations where inability to hear ambient sounds could be dangerous (e.g., while driving, cycling, or walking in traffic).
- Dispose of the product and its battery responsibly according to local regulations.

PACKAGE CONTENTS

Ensure all items are present in the package:

- Bitmore Aural Buds Wireless Bluetooth Earbuds
- USB Charging Cable (Micro USB)
- User Manual (Digital QR code provided on packaging)





Image Description: A close-up view of the Bitmore Aural Buds wireless earbuds. The earbuds are a light, speckled beige color, indicating their recycled material composition, and are connected by a vibrant green cable. An inline control unit is visible on the cable, featuring three distinct buttons: volume up (+), a multi-function button (call/play/pause), and volume down (-). The earbud tips have a metallic silver finish. This image highlights the physical design and the control interface of the product.

A diagram illustrating the key features of the Bitmore Aural Buds. The image shows the earbuds and their inline control unit against a dark grey background. The brand name 'BITMORE' is on the left and 'Aural Buds' is on the right. Text highlights features like 'Bluetooth 5.0 earbuds with pristine sound quality' and 'Built-in volume control and mic for handsfree calls'. At the bottom, five circular icons represent: Bluetooth connectivity, 4 hours of playback, 10 meters range, 75cm cable length, and handsfree capability.

BITMORE **Aural Buds**

Bluetooth 5.0 earbuds with pristine sound quality

Built-in volume control and mic for handsfree calls.

BLUETOOTH **PLAYBACK** **RANGE** **CABLE** **HANDSFREE**

Image Description: A diagram illustrating the key features of the Bitmore Aural Buds. The image shows the earbuds and their inline control against a dark grey background. Icons and text highlight: "Bluetooth 5.0 earbuds with pristine sound quality", "Built-in volume control and mic for handsfree calls". Below, five circular icons represent: Bluetooth connectivity, 4 hours of playback, 10 meters

wireless range, 75 cm cable length, and hands-free calling capability. This visual summarizes the core functionalities and specifications.

Components:

- **Earbuds:** Designed for comfortable in-ear fit.
- **Inline Control Unit:** Contains buttons for volume, playback, and call management, along with the built-in microphone.
- **Micro-USB Charging Port:** Located on the inline control unit.
- **LED Indicator:** Shows charging status and Bluetooth pairing status.

SETUP

1. Charging the Earbuds

1. Locate the Micro-USB charging port on the inline control unit.
2. Connect the provided USB charging cable to the earbuds' charging port.
3. Plug the other end of the USB cable into a USB power source (e.g., computer USB port, wall adapter).
4. The LED indicator will illuminate red during charging.
5. Once fully charged (approximately 1.5 hours), the LED indicator will turn blue.
6. Disconnect the charging cable.

Note: Ensure the earbuds are fully charged before first use for optimal battery life.

2. Bluetooth Pairing

1. Ensure the earbuds are turned off.
2. Press and hold the multi-function button (center button on the inline control) for approximately 3-5 seconds until the LED indicator flashes red and blue alternately. This indicates pairing mode.
3. On your smartphone, tablet, or other Bluetooth-enabled device, go to the Bluetooth settings.
4. Turn on Bluetooth and search for available devices.
5. Select "Bitmore Aural Buds" from the list of found devices.
6. Once successfully paired, the LED indicator on the earbuds will flash blue slowly or turn solid blue (depending on model), and you may hear an audible confirmation.
7. The earbuds are now ready for use.

Note: The earbuds will automatically attempt to reconnect to the last paired device when powered on, if that device's Bluetooth is active and within range.

Connectivity

Aural Buds packs the latest in Bluetooth 5.0 wireless tech.

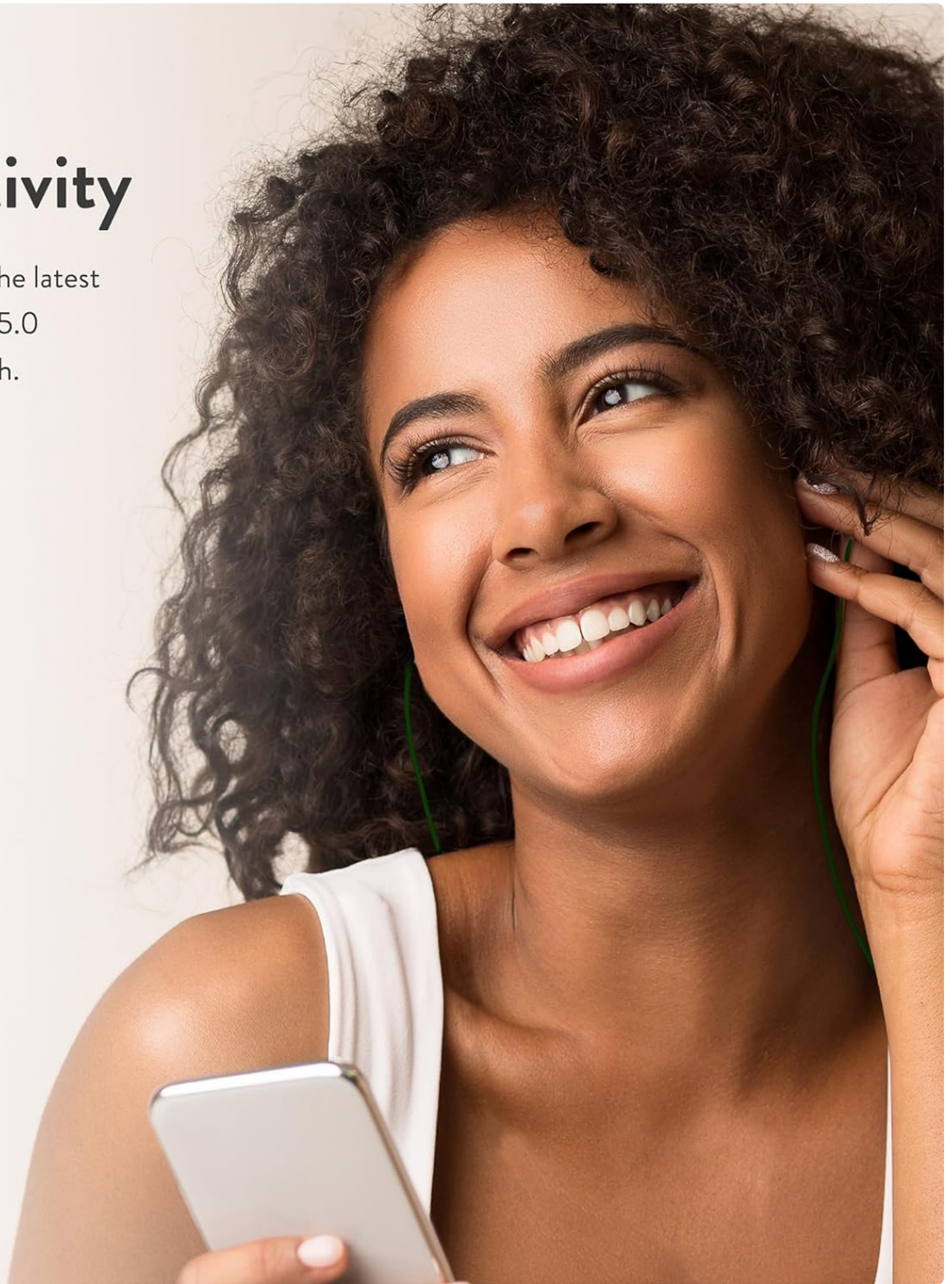


Image Description: A woman with curly hair is smiling and looking upwards, wearing the Bitmore Aural Buds earbuds. She is holding a smartphone in her hand, suggesting active use of the earbuds for audio or communication. The image emphasizes the ease of connectivity and the user's positive experience with the product.

OPERATING INSTRUCTIONS

Power On/Off

- **Power On:** Press and hold the multi-function button for approximately 3 seconds until the LED indicator flashes blue and you hear a power-on tone.
- **Power Off:** Press and hold the multi-function button for approximately 5 seconds until the LED indicator flashes red and you hear a power-off tone.

Music Playback

- **Play/Pause:** Press the multi-function button once.
- **Next Track:** Press and hold the "+" (volume up) button for 2 seconds.
- **Previous Track:** Press and hold the "-" (volume down) button for 2 seconds.
- **Volume Up:** Short press the "+" button.
- **Volume Down:** Short press the "-" button.

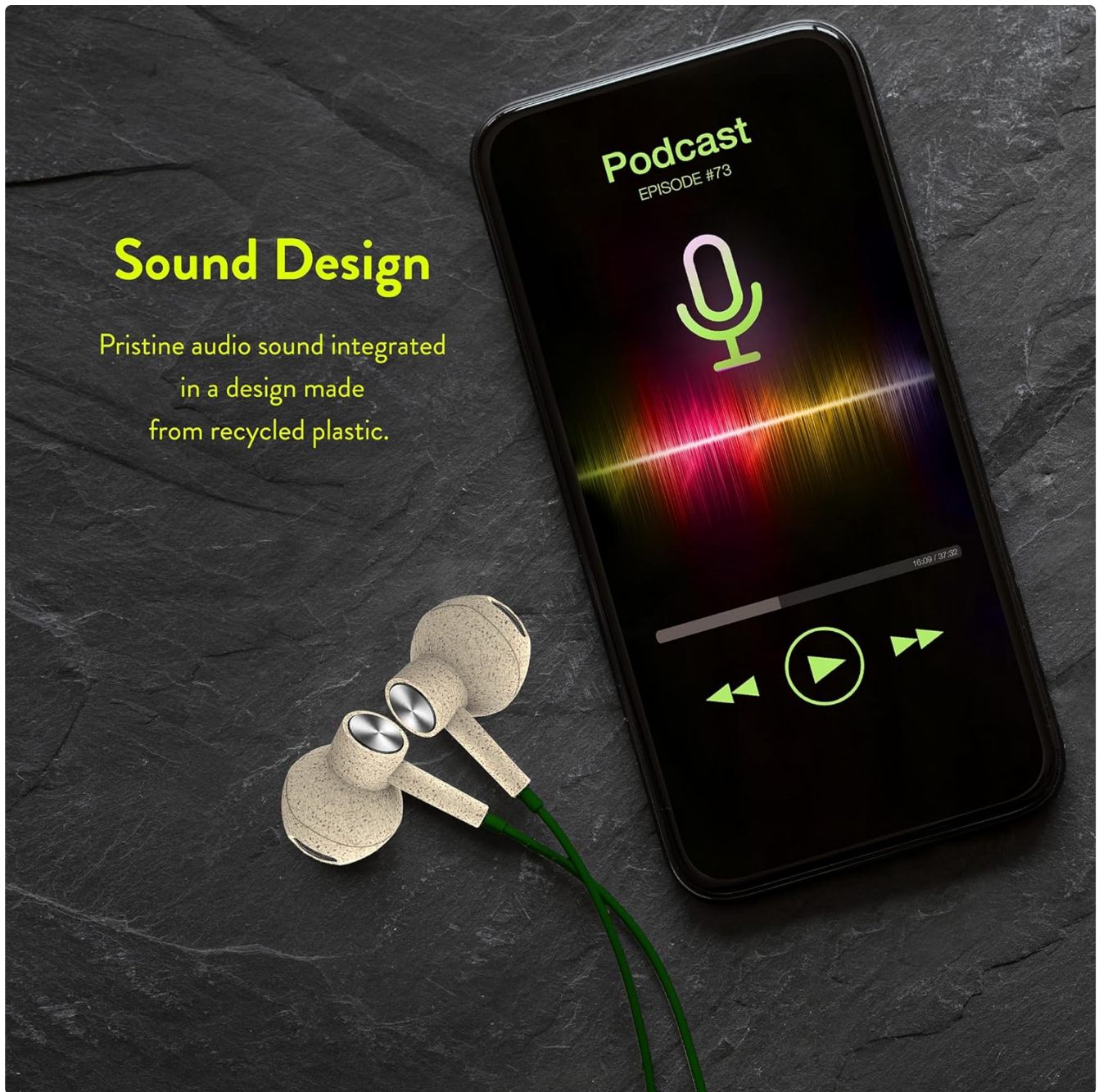


Image Description: The Bitmore Aural Buds are positioned next to a smartphone screen that displays a podcast interface with a sound wave visualization. The text "Sound Design" and "Pristine audio sound integrated in a design made from recycled plastic" are visible. This image highlights the audio quality and eco-friendly design of the earbuds, particularly for listening to podcasts or music.

Call Management

- **Answer/End Call:** Press the multi-function button once.
- **Reject Call:** Press and hold the multi-function button for 2 seconds.
- **Redial Last Number:** Double-press the multi-function button.

Hands Free

Take calls with ease as well as playing music and podcasts on the go.

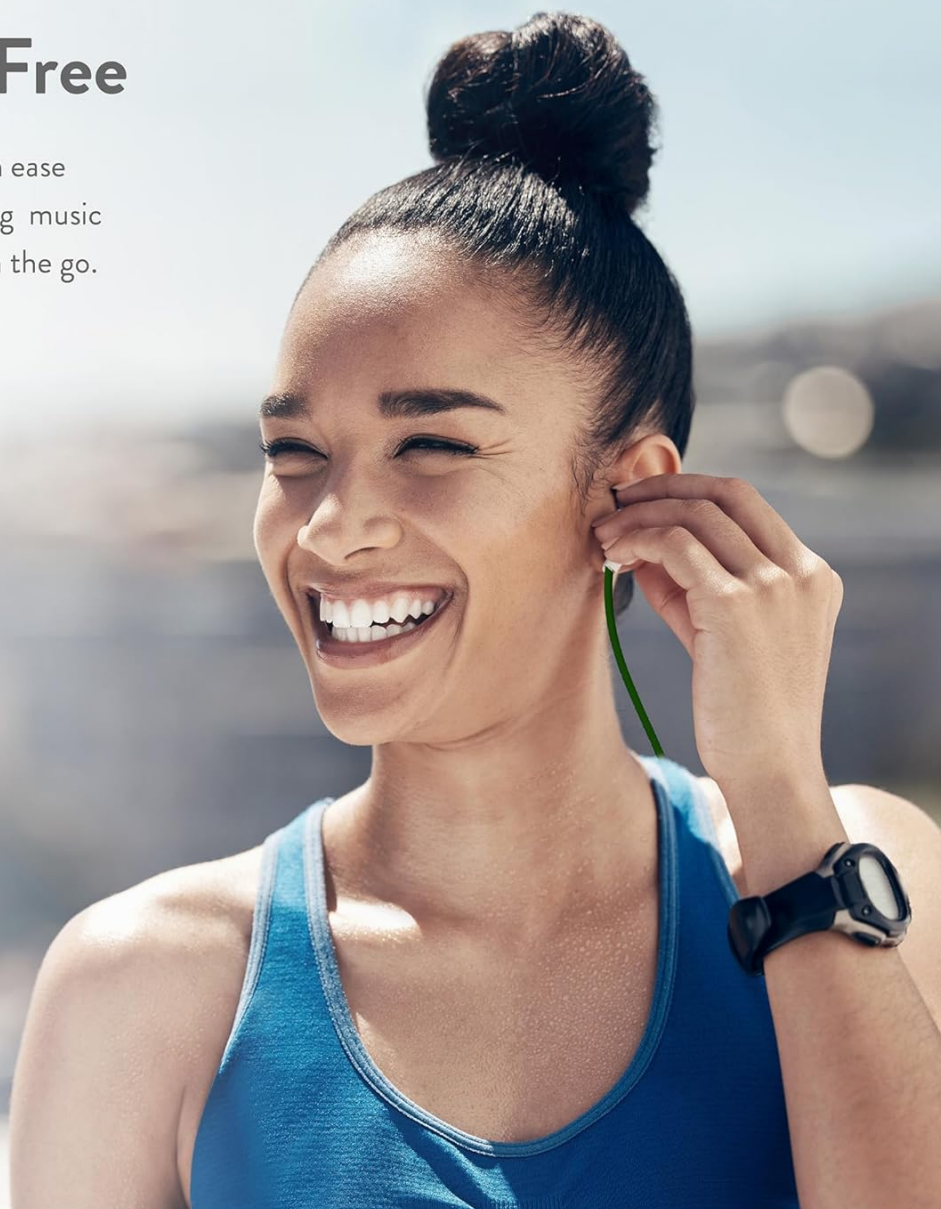


Image Description: A woman with her hair tied up is smiling and appears to be engaged in a conversation while wearing the Bitmore Aural Buds. Her hand is near her ear, suggesting she is using the earbuds for a call. The text "Hands Free" and "Take calls with ease as well as playing music and podcasts on the go" are displayed. This image illustrates the convenience of hands-free communication and media consumption.

MAINTENANCE

- **Cleaning:** Use a soft, dry, lint-free cloth to clean the earbuds. Do not use harsh chemicals or abrasive materials.
- **Storage:** When not in use, store the earbuds in a cool, dry place, away from direct sunlight and extreme temperatures.
- **Battery Care:** To prolong battery life, avoid fully discharging the battery frequently. Charge the earbuds regularly, even if not in frequent use.

TROUBLESHOOTING

Problem	Possible Cause	Solution
---------	----------------	----------

Problem	Possible Cause	Solution
Earbuds do not power on.	Low battery.	Charge the earbuds for 1.5 hours.
Cannot pair with device.	Earbuds not in pairing mode; Bluetooth off on device; device too far.	Ensure earbuds are flashing red/blue; turn on Bluetooth on device; move device closer (within 10m).
No sound or low volume.	Volume too low on earbuds or device; earbuds not connected.	Increase volume on both earbuds and device; re-pair the earbuds.
Intermittent connection.	Too far from device; interference.	Move closer to the device; avoid strong electromagnetic interference.

SPECIFICATIONS

Feature	Detail
Model Name	Aural Buds
Model Numbers	BM-IEBTEC-B, BM-IEBTEC-G, BM-IEBTEC-R
Connectivity Technology	Wireless (Bluetooth 5.0)
Wireless Range	Up to 10 meters (33 feet)
Battery Life	Up to 4 hours playback
Charging Time	Approximately 1.5 hours
Battery Type	Lithium-ion Polymer
Charging Port	Micro USB
Frequency Response	20 Hz - 20,000 Hz
Material	BPA-free Recycled Plastic, 35% Wheat Straw
Cable Length	75 cm (recycled TPE cable)
Microphone	Built-in for hands-free calls
Water Resistance	Not waterproof
Special Features	Carbon Neutral, Eco-friendly design



Image Description: The Bitmore Aural Buds are displayed alongside several environmental certifications and logos. These include "1% FOR THE PLANET - MEMBER", "Certified B Corporation", "C CARBON NEUTRAL", and a graphic indicating "MADE FROM RECYCLED PLASTICS". The Bitmore logo with the tagline "FEEL GOOD TECH" is also prominent. This image emphasizes the product's commitment to sustainability and ethical manufacturing.

WARRANTY AND SUPPORT

Bitmore products are designed for durability and performance. For information regarding warranty coverage, technical support, or replacement parts, please refer to the official Bitmore website or contact their customer service.

Online Support: Visit www.bitmore.co.uk for FAQs, product registration, and contact information.

Customer Service: Refer to the contact details provided on your product packaging or the official website for direct assistance.

Please retain your proof of purchase for warranty claims.

