

TEEHO TE002-K

TEEHO TE002K Keyless Fingerprint Deadbolt Door Lock Instruction Manual

MODEL: TE002K

Product Overview

The TEEHO TE002K is a smart deadbolt door lock designed for enhanced security and convenience. It features multiple unlocking methods including 3D fingerprint recognition, keypad access with user-defined codes, and traditional physical keys. The lock also includes automatic locking functions, anti-peeping password protection, and a durable, weather-resistant design.

Product Components

The TEEHO TE002K package includes the following items:

- Fingerprint Deadbolt door lock
- 2 passage door knobs
- 2 standard keys
- Latches
- Strike Plate
- Installation Instructions
- Programming Instructions

Setup and Installation

The TEEHO TE002K smart lock is designed for easy installation and is suitable for most residential standard doors. It requires 2-1/8" (54mm) door holes and is not compatible with 38mm door holes. A screwdriver is the only tool needed for installation.

Door Compatibility



This diagram illustrates the compatible door dimensions, including backset (2-3/8" or 2-3/4"), hole diameter (2-1/8"), and door thickness (1-3/8" to 2"). Ensure your door meets these specifications for proper installation.

Installation Steps

For a detailed visual guide, please refer to the installation video below.

Your browser does not support the video tag.

Video: Installation guide for TEEHO TE001K & TE002K smart locks. This video demonstrates the step-by-step process of installing the deadbolt and handle components onto a door.

1. **Prepare the Door:** Ensure your door meets the specified dimensions. Remove any existing lock hardware.
2. **Install the Latch:** Insert the latch into the door edge. Adjust the backset if necessary (2-3/8" or 2-3/4"). Secure with screws.
3. **Install the Exterior Assembly:** Feed the cable through the door hole and align the exterior keypad assembly.
4. **Install the Interior Mounting Plate:** Secure the interior mounting plate to the door, ensuring the cable is properly routed.
5. **Connect the Cable:** Connect the exterior assembly's cable to the interior assembly.
6. **Install the Interior Assembly:** Attach the interior assembly to the mounting plate.
7. **Install Batteries:** Insert 4 AA alkaline batteries (not included) into the interior assembly.
8. **Install Door Knobs:** Install the passage door knobs according to the separate instructions provided.

Operating Instructions

The TEEHO TE002K offers multiple convenient ways to lock and unlock your door.

Unlocking the Door

- **3D Fingerprint Unlock:** Place your registered fingerprint on the sensor. The lock recognizes your fingerprint in 0.3 seconds and unlocks in 1 second. The lock supports up to 20 different fingerprints.

0.3s Identify Fingerprint

1 Second Unlocking



Image: A user unlocking the TEEHO TE002K smart lock using the integrated fingerprint sensor. The image highlights the quick recognition and unlocking speed.

- **Keypad Unlock:** Enter your 4-10 digit access code on the backlit keypad. The lock supports up to 20 user codes.



Image: A hand entering a code on the TEEHO TE002K keypad. The keypad is backlit for visibility in low light conditions.

- **One-Time PIN Code:** Generate a temporary one-time PIN code for guests or service providers. This code is automatically deleted after use.

Fits on Most Standard Doors



Left-Handed Door



Right-Handed Door

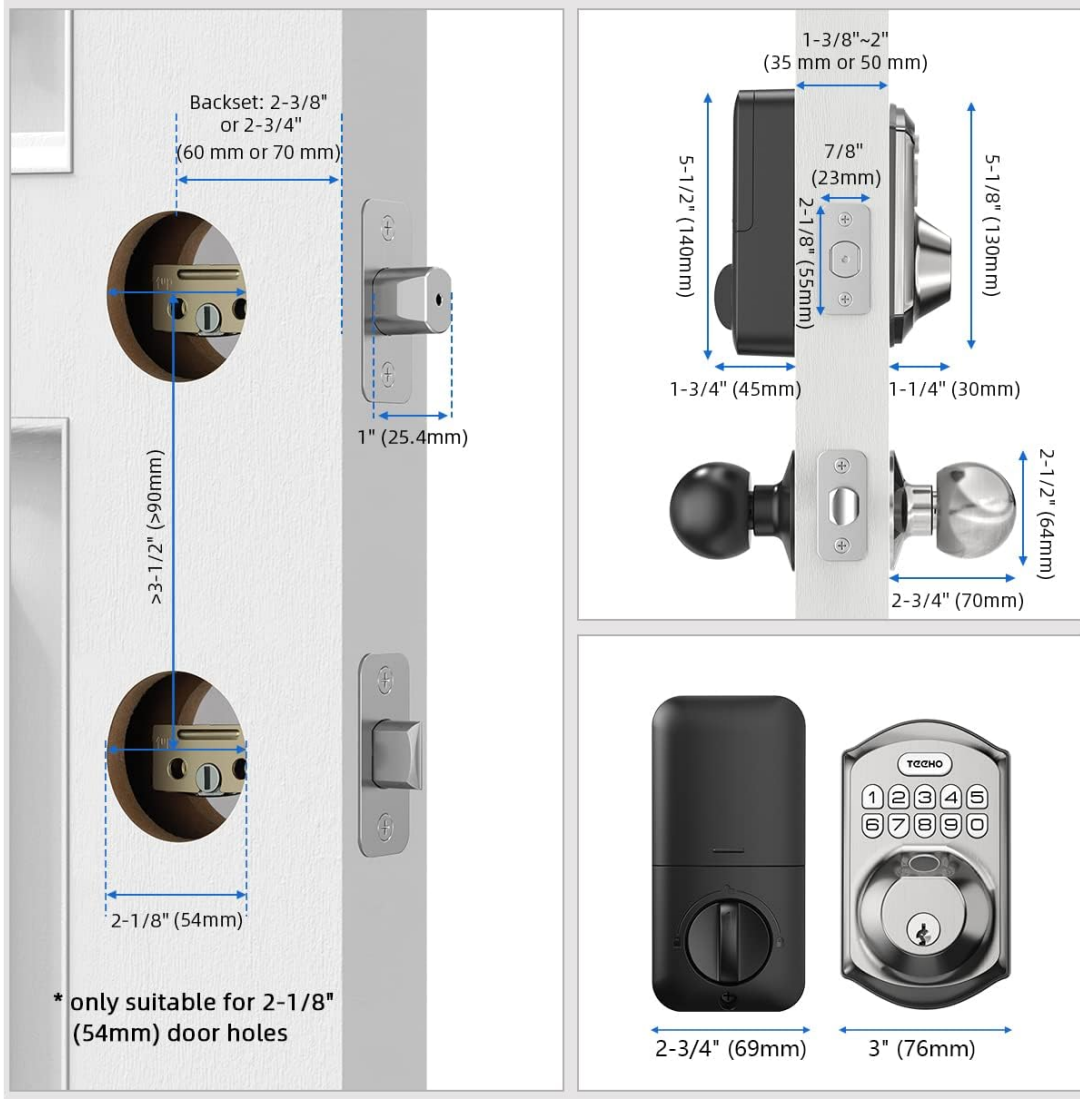


Image: A woman receiving a one-time PIN code on her smartphone, which can be used to grant temporary access to the TEEHO TE002K lock.

- **Physical Key:** Use one of the two standard keys provided for manual unlocking.

Locking the Door

- **Auto-Lock:** The lock can be set to automatically lock within 10-99 seconds after being unlocked. This feature is disabled by default and can be enabled in the programming settings.

Auto-lock & One-touch Locking

10-99 Seconds Auto Lock &
2 Seconds One-touch Lock



Auto



Door knobs are included in the package

Image: A visual representation of the auto-lock feature, indicating the lock can be set to automatically engage after a set time (10-99 seconds).

- **One-Touch Lock:** Press and hold any key on the keypad for 2 seconds to instantly lock the door.

Your browser does not support the video tag.

Video: Demonstration of how to unlock and lock the TEEHO TE002K smart lock using various methods.

Programming the Lock

The lock's programming is done directly on the keypad. Refer to the programming instructions for detailed steps.

Your browser does not support the video tag.

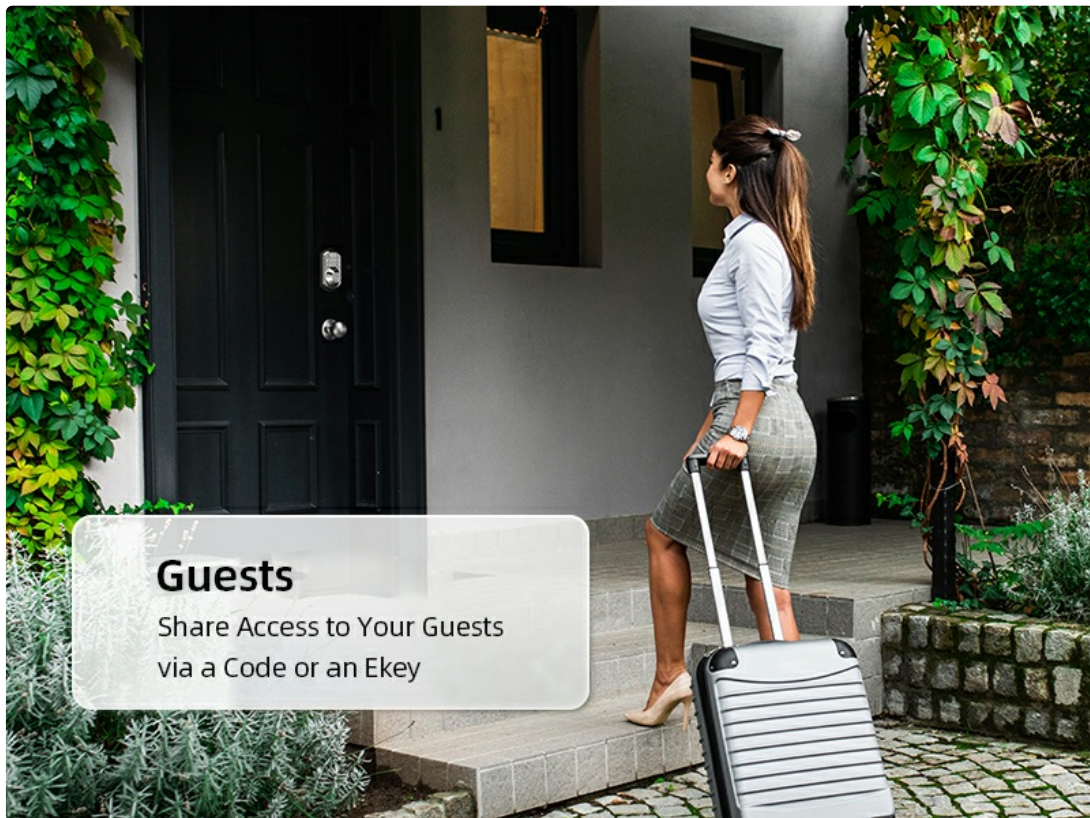
Video: Programming guide for the TEEHO TE002K Fingerprint Door Lock. This video covers setting up master codes, user codes, and fingerprints.

Key Programming Functions:

- **Change Master Code:** The default master code is 12345678. It is required to change this to a code of your own before programming other features.
- **Add User Code:** Program up to 20 unique user codes (4-10 digits).
- **Delete User Code:** Remove individual user codes as needed.
- **Add User Fingerprints:** Register up to 20 different fingerprints for quick access.
- **Delete User Fingerprints:** Remove individual registered fingerprints.
- **Silent Mode:** Enable or disable audible feedback from the keypad.
- **Vacation Mode:** A security feature that disables all user codes and fingerprints until the master code is entered.
- **Set Auto-Lock Time Delay:** Adjust the automatic locking delay between 10 and 99 seconds.
- **Add One-Time Code:** Create temporary access codes that expire after a single use.

Security Features

- **ANSI Grade 3 Certified:** The TEEHO TE002K meets ANSI Grade 3 standards for residential security, indicating high durability and resistance to forced entry.



Guests

Share Access to Your Guests
via a Code or an Ekey

Image: The TEEHO TE002K lock highlighting its ANSI Grade 3 certification and various durability tests, including keypad life, impact, pull, and environmental resistance.

- **IP54 Weather Resistance:** Designed to withstand various weather conditions, ensuring reliable operation outdoors.

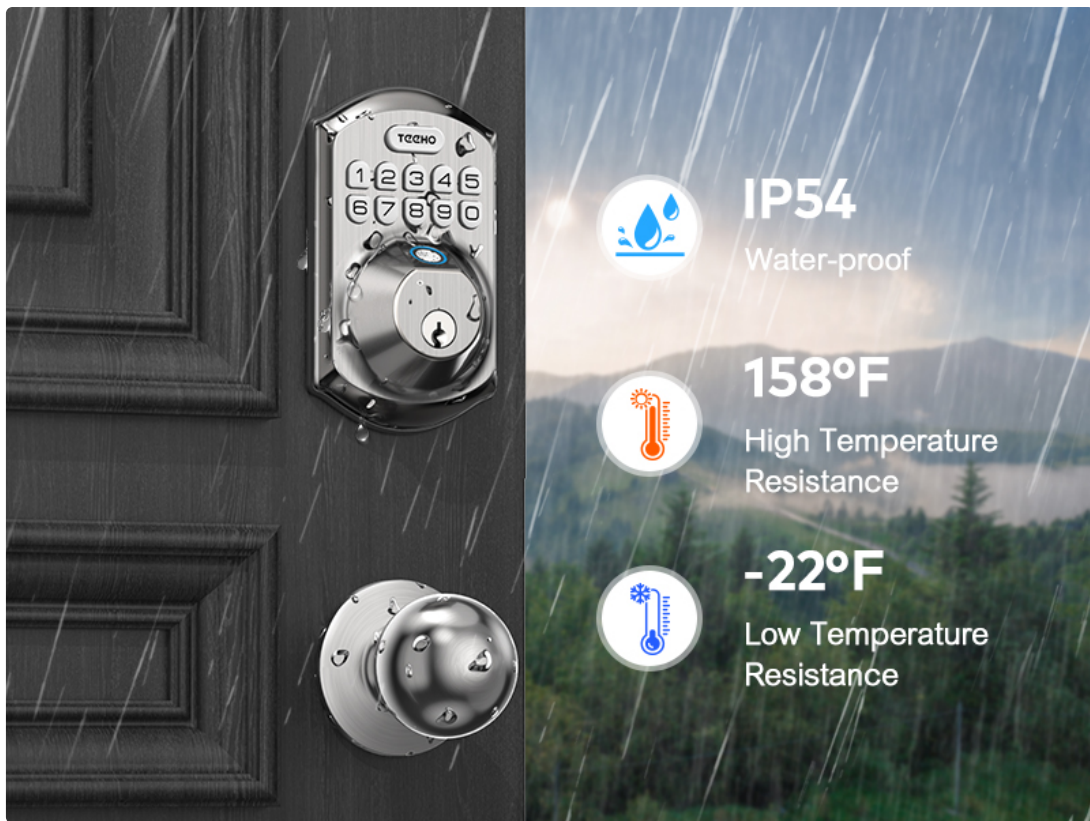


Image: The TEEHO TE002K lock demonstrating its IP54 waterproof rating and resistance to high (158°F) and low (-22°F) temperatures.

- **Anti-Peeping Password:** Allows users to enter random digits before or after their actual code to prevent others from guessing the correct sequence.
- **Low Battery Alert:** The keypad will illuminate a low battery indicator when the battery level drops below 15%.

Anti-peep Tactile Keypad

6421 **51381** 9352

Password

Random digits

Add random digits to protect your passcode from prying eyes. Easy to use with the backlight at night.



Note: The front deadbolt with knob is Satin Nickel and the rear is black.

Image: The TEEHO TE002K keypad displaying a low battery indicator, alerting the user when battery replacement is needed.

- **Long Battery Life:** Powered by 4 AA batteries, the lock can operate for over 1 year under normal usage.

Specifications

Feature	Detail
Brand	TEEHO
Model Name	TE002-K
Lock Type	Biometric
Material	Aluminum

Color	Satin Nickel
Item Dimensions L x W x H	9.13 x 7.13 x 3.54 inches
Item Weight	2.91 pounds
Special Features	Auto Lock, Anti-peeping Password, Back-lit Keypad, Keyless Entry, One-touch Lock, IP54, Vacation Mode, Mute Mode, Up to 20 Fingerprints & PIN Codes Unlock
Power Source	4 AA Batteries (not included)
Door Compatibility	2-1/8" (54mm) door holes, fits most residential standard doors

Troubleshooting

- **Battery Drains Quickly:** Ensure you are using high-quality alkaline batteries. Frequent usage or extreme temperatures can affect battery life. Check for any mechanical resistance in the deadbolt mechanism that might be overworking the motor.
- **No Low Battery Warning:** While the lock is designed to provide a low battery alert, external factors can sometimes affect this. It is recommended to replace batteries annually or at the first sign of sluggish operation.
- **Auto-Lock Engages When Door is Open:** The auto-lock feature is time-based and does not detect if the door is physically closed. If you frequently leave your door ajar, consider disabling auto-lock or adjusting the time delay to prevent the deadbolt from extending into the door frame.
- **Programming Issues:** If you encounter difficulties programming codes or fingerprints, ensure you are following the instructions precisely. Always change the default master code first. If issues persist, perform a factory reset (refer to the programming manual) and try again.
- **Lock Not Responding:** If the lock becomes unresponsive, try removing and reinserting the batteries. If this does not resolve the issue, a factory reset may be necessary.

Warranty and Support

TEEHO offers a 30-day customer commitment, a 1-year product support on all parts, and lifetime after-sales customer service. This includes online phone support from Monday to Friday, 9 AM to 5 PM PST, and 24/7 online email service.

For assistance, please contact TEEHO customer support.