



**Manuals.plus /**

› **Benrocks /**

› Benrocks 60" WiFi- Enabled Electric Fireplace Inserts - Alexa & App Control, Slim Recessed & Wall Mounted, 13 \* 13 \* 3 Flame Color Combinations, 750W/1500W, Black 60"(WIFI)

## **Benrocks BR01BIZ60A**

# **Benrocks 60" WiFi-Enabled Electric Fireplace Insert User Manual**

Model: BR01BIZ60A

## **INTRODUCTION**

---

This manual provides detailed instructions for the safe operation, installation, and maintenance of your Benrocks 60" WiFi-Enabled Electric Fireplace Insert. Please read this manual thoroughly before use and retain it for future reference. This electric fireplace offers a stunning visual centerpiece with customizable flame effects and efficient heating for your home.

## **IMPORTANT SAFETY INFORMATION**

---

Always follow basic safety precautions when using electrical appliances to reduce the risk of fire, electric shock, and injury to persons.

- Read all instructions before using this fireplace.
- Do not operate any fireplace with a damaged cord or plug, or if the heater has malfunctioned, been dropped, or damaged in any manner.
- Do not use outdoors. This fireplace is intended for indoor use only.
- Keep combustible materials, such as furniture, pillows, bedding, papers, clothes, and curtains at least 3 feet (0.9 m) from the front of the fireplace and away from the sides and rear.
- Extreme caution is necessary when any heater is used by or near children or invalids and whenever the fireplace is left operating and unattended.
- To disconnect the fireplace, turn controls to off, then remove the plug from the outlet.
- Do not insert or allow foreign objects to enter any ventilation or exhaust opening as this may cause an electric shock or fire, or damage the fireplace.

## **PACKAGE CONTENTS**

---

Ensure all items are present and in good condition before installation.

- Benrocks 60" Electric Fireplace Unit
- Remote Control
- Log Set
- Crystal Media
- Wall Mount Bracket
- Mounting Screws (ST4\*8-Screws)
- User Manual

## SPECIFICATIONS

Feature	Detail
Brand	Benrocks
Model Name	BR01BIZ60A
Product Dimensions	6.3"D x 60"W x 16.86"H
Insert Size	58.49"W x 15.75"H x 5.91"D
Material	Glass, Resin
Power Source	Corded Electric
Heat Output	5100 British Thermal Units (BTU)
Wattage	750W / 1500W
Heating Coverage	Up to 400 sq ft
Flame Colors	13 options
Fuel Bed Colors	13 options
Top Light Colors	3 options
Timer	1-9 Hours
Control Methods	Remote Control, Touchscreen, APP (Wi-Fi Enabled)

Overall dimensions: 60"W x 16.87"H x 6.31"D. Insert dimensions: 58.49"W x 15.75"H x 5.91"D.

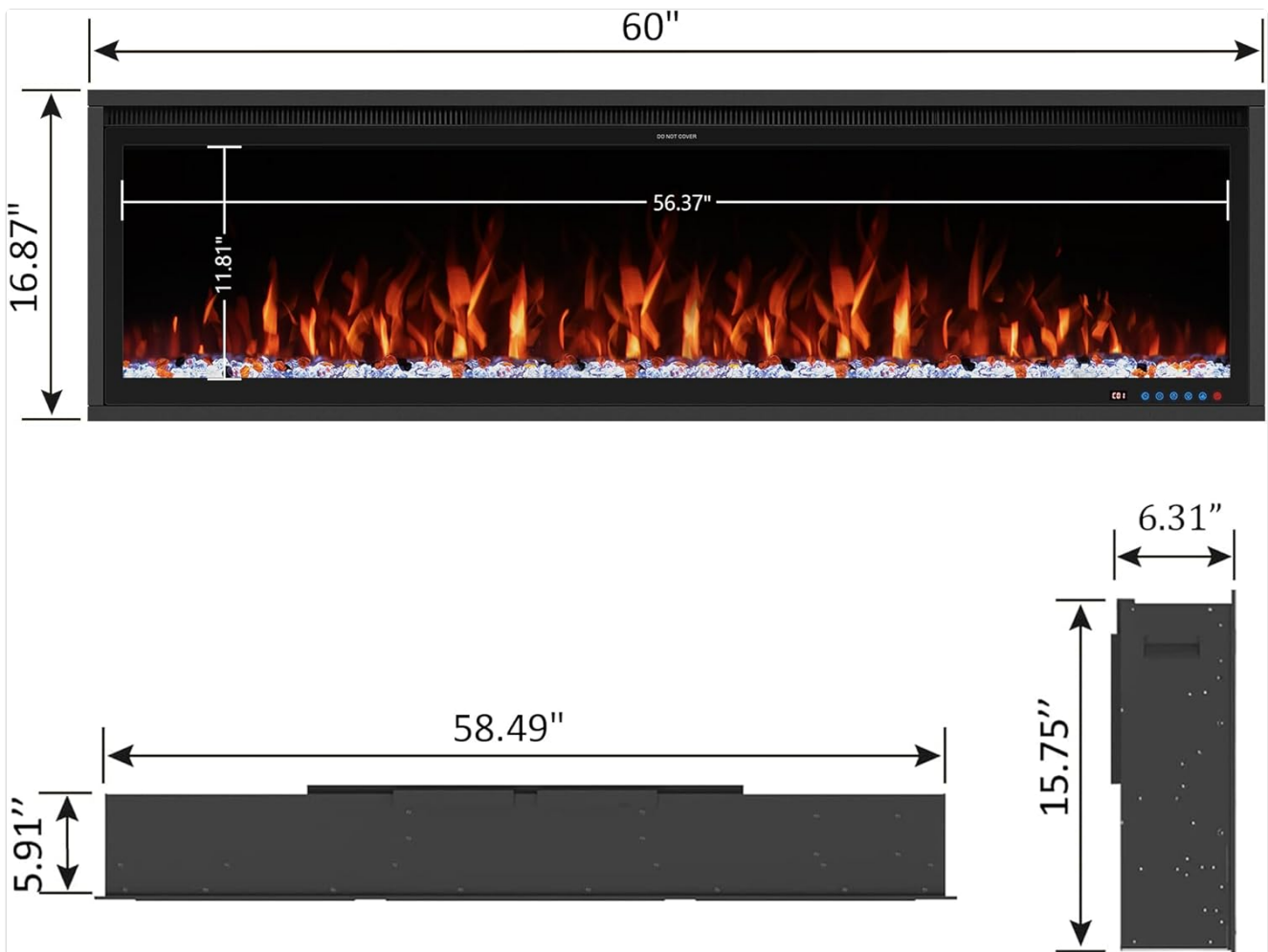


Figure 1: Product Dimensions

## INSTALLATION

Your Benrocks electric fireplace can be installed as a recessed unit or wall-mounted. Choose the method that best suits your space.

### Recessed Installation

For recessed installation, ensure you have a suitable opening in your wall. The required opening dimensions are approximately 58.88" (width) x 16.1" (height) x 6.25" (depth). Refer to the diagram below for detailed steps.

# Remote/Touch/APP



LCD



**Timer**

1-9Hours

**Top Light**

F1 yellow  
F2 blue  
F3 purple-cycle

**Flame**

L1-L13  
cycle Switch

**Heater**

750W/1500W

**Log Flame**

C1-C13 Cycle

**Power ON/OFF**

Figure 2: Recessed or Wall Mounted Installation Overview

## Wall-Mounted Installation

To wall-mount the fireplace, attach the wall mount bracket securely to a stud in your wall using the provided screws. Then, carefully lift and hang the fireplace unit onto the bracket. Ensure it is level and secure.



## SETUP

---

### Power Connection

Plug the fireplace's 6-foot power cord into a standard 120V electrical outlet. Ensure the outlet is properly grounded and can support the fireplace's wattage (750W/1500W).

### Wi-Fi and App Control Setup

Your Benrocks fireplace is Wi-Fi enabled for convenient control via a smartphone app.

1. Download the "Xaralyn Smart" app from your device's app store. You can scan the QR code below for direct access.



Scan to download Xaralyn Smart App: <https://smartapp.tuya.com/xaralynsmart>

2. Open the app and follow the on-screen instructions to register or log in.
3. To connect the fireplace to Wi-Fi, ensure your phone is connected to a 2.4GHz Wi-Fi network.
4. On the fireplace, hold down the flame button for approximately ten seconds to activate Wi-Fi pairing mode. The display may show a pairing indicator.

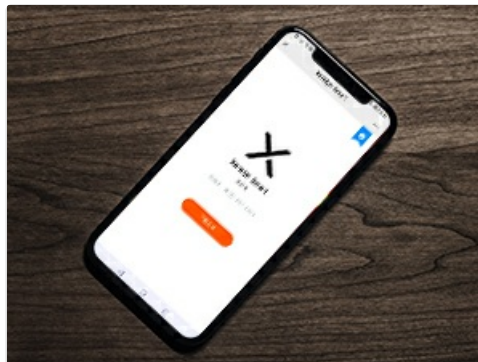


Figure 4: Xaralyn Smart App Interface

5. In the app, select "Add Device" or the equivalent option and follow the prompts to connect your fireplace.



Figure 5: App Control for Temperature

## OPERATING INSTRUCTIONS

---

Your fireplace offers multiple ways to control its features.

### Control Methods

You can operate the fireplace using the included remote control, the integrated touchscreen panel on the unit, or the "Xaralyn Smart" app on your smartphone.



## Recessed or Wall Mounted

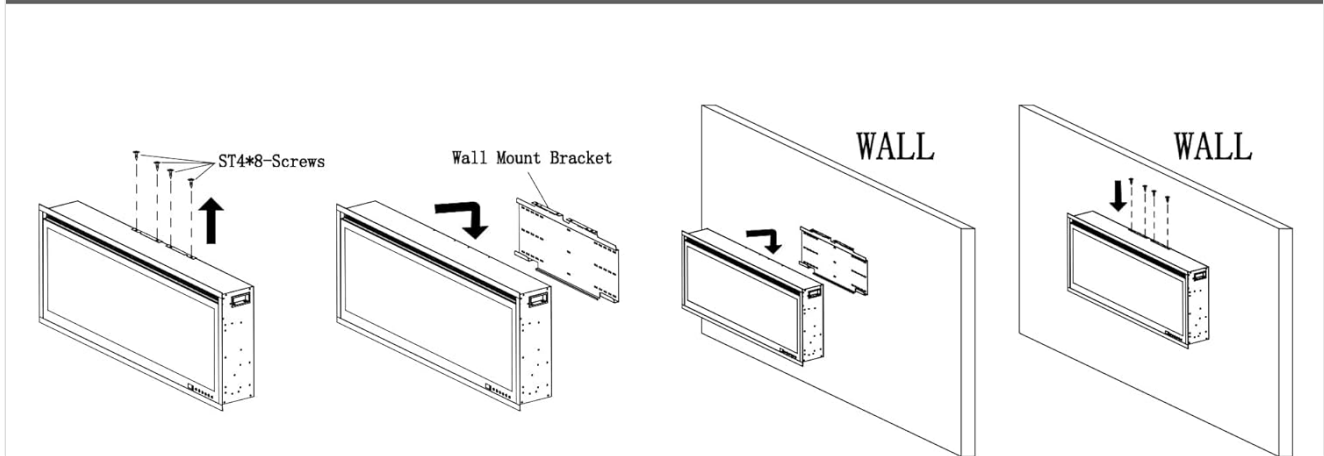


Figure 6: Remote Control and Touchscreen Panel

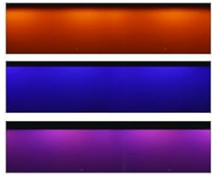
### Flame and Light Settings

Customize your ambiance with a wide range of color options:

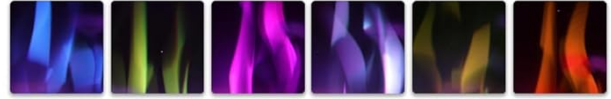
- **Flame Colors:** 13 adjustable flame colors (L1-L13 cycle switch).
- **Fuel Bed Colors:** 13 fuel bed flame colors (C1-C13 cycle).
- **Top Light Colors:** 3 top light colors (F1 yellow, F2 blue, F3 purple-cycle).

These options allow for up to 507 color combinations to suit any mood or decor.

# Realistic Flame Effect in Different Color



3 Top Light Colors



13 Flame Colors



13 Fuel Bed Flame Colors

Figure 7: Realistic Flame Effect in Different Colors



# Up to 507 color combinations

13 flame colors + 13 ember colors  
+ 3 top light colors for each

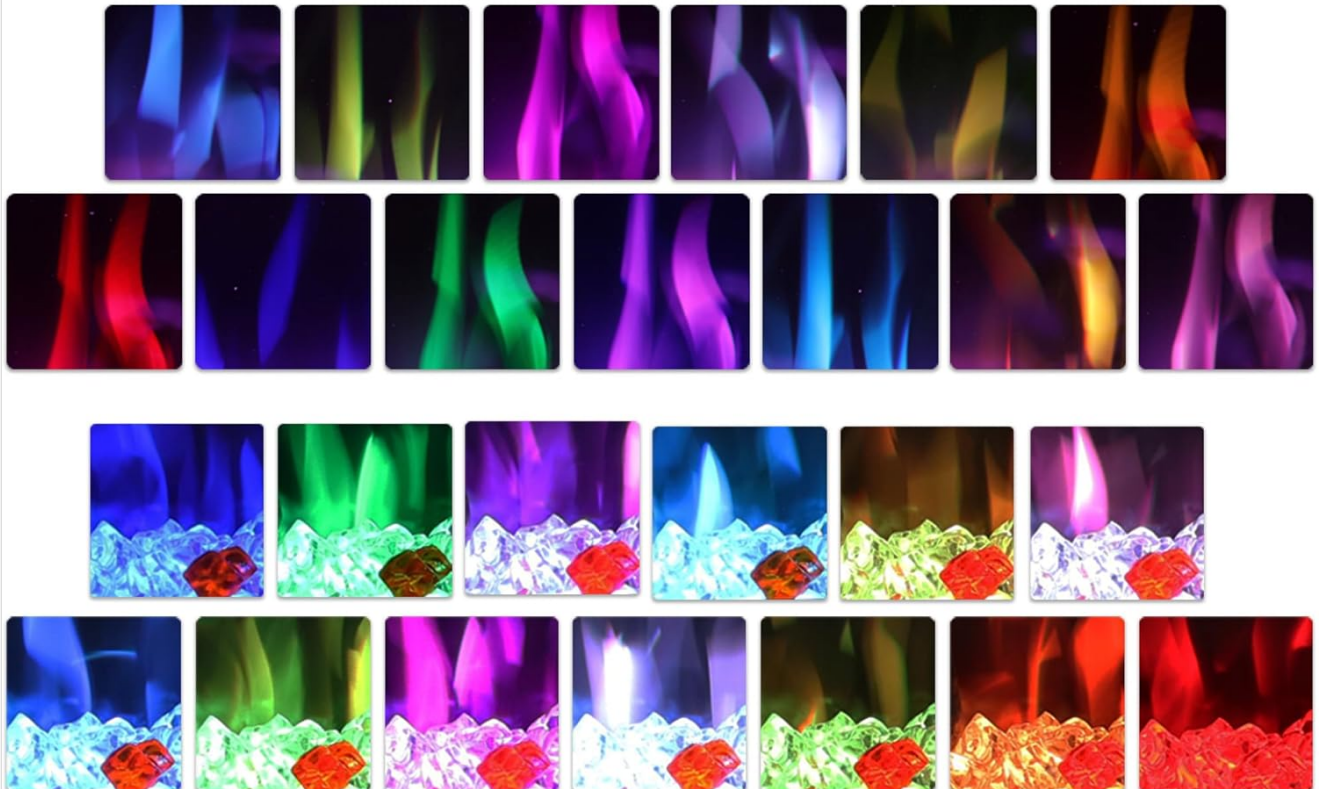


Figure 8: Up to 507 Color Combinations

## Heating Function

The fireplace provides supplemental heat for areas up to 400 sq ft. Select between two heat settings:

- **750W:** Lower heat output for smaller spaces or milder warmth.
- **1500W:** Higher heat output for larger spaces or quicker heating.

The heating function can be operated independently of the flame effects.

## Timer Function

Set the automatic shut-off timer for convenience. The timer can be set from 1 to 9 hours.

## MAINTENANCE

Regular maintenance ensures the longevity and optimal performance of your electric fireplace.

- **Cleaning:** Always unplug the fireplace before cleaning. Use a soft, damp cloth to wipe down the exterior surfaces. Do not use abrasive cleaners or sprays.

- **Glass Panel:** Clean the glass panel with a soft cloth and a glass cleaner. Do not scratch the surface.
- **Air Vents:** Periodically check and clean the air vents to ensure proper airflow and prevent overheating. Use a vacuum cleaner with a brush attachment to remove dust.
- **Storage:** If storing the fireplace for an extended period, unplug it and store it in a dry, dust-free location.

## TROUBLESHOOTING

Refer to this section for common issues and their solutions.

Problem	Possible Cause	Solution
Fireplace does not turn on.	No power, power cord not plugged in, circuit breaker tripped.	Ensure the power cord is securely plugged into a working outlet. Check your home's circuit breaker.
No flame effect.	Flame function is off, LED lights malfunction.	Press the flame button on the remote/touchscreen/app to activate. If problem persists, contact support.
No heat output.	Heater function is off, thermostat setting too low, overheat protection activated.	Ensure heater function is on. Increase thermostat setting. Unplug unit for 15 minutes to reset overheat protection.
Remote control not working.	Batteries are dead, remote not aimed correctly, obstruction.	Replace batteries. Point remote directly at the fireplace's sensor. Remove any obstructions.
Wi-Fi connection issues.	Incorrect Wi-Fi password, 5GHz network, fireplace not in pairing mode.	Ensure correct password. Connect to a 2.4GHz network. Hold flame button for 10 seconds to enter pairing mode.

## WARRANTY AND SUPPORT

Benrocks is committed to providing high-quality products and customer satisfaction.

This product comes with **Lifetime Technical Support** under normal use and proper care. For any technical assistance, questions, or concerns, please contact Benrocks customer support. We aim to provide feedback and replies within 24 hours. For further details on warranty claims or to reach customer service, please visit the official Benrocks store on Amazon or refer to the contact information provided with your purchase documentation.