

WUBEN T5C2

WUBEN C2 Flashlight User Manual

Model: T5C2 | Brand: WUBEN

1. PRODUCT OVERVIEW

The WUBEN C2 is a high-performance, USB-C rechargeable tactical flashlight designed for versatility and durability. It offers exceptional brightness and multiple lighting modes, making it suitable for a wide range of applications from everyday carry to outdoor adventures and emergency situations.

Key Features

- **High Lumens:** Equipped with an advanced SST40 6500K LED, delivering up to 2000 lumens of brightness and a throw distance of up to 358 meters.
- **Durable Construction:** Crafted from hard anodized aircraft-grade 6061 T6 aluminum, ensuring resistance to high and low temperatures, IP68 waterproof rating, and 1.5M impact resistance.
- **Rechargeable Battery:** Features a 4800mAh large capacity rechargeable battery and a Type-C charging cable for extended use and convenient recharging.
- **Versatile Lighting Modes:** Includes 4 basic modes (High, Medium, Low, ECO) with memory function, 1 hidden mode (Turbo), and 2 flashing modes (Strobe, SOS).
- **Portable Design:** Compact size (5.06 x 4.11 inches) and an integrated pocket-clip allow for easy carrying on belts, in pockets, or attached to backpacks.



The WUBEN C2 Flashlight, showcasing its compact design and included accessories.

2. SETUP

Unboxing and Initial Charge

Upon receiving your WUBEN C2 Flashlight, please ensure all components are present:

- WUBEN C2 Flashlight
- 4800mAh Rechargeable Battery (pre-installed)
- USB Type-C Charging Cable
- Lanyard
- Belt Clip

Before first use, fully charge the flashlight. Connect the included USB Type-C cable to the flashlight's charging port and plug the other end into a standard USB power source (e.g., wall adapter, computer, power bank). The indicator light will show charging status.

TYPE-C Fast Charging

About 4 hours fast charging with any USB port (5V/2A)



USB-A Portable

Provides extra security by charging devices in an emergency (5V/2A)



The WUBEN C2 supports Type-C fast charging and can also act as a portable power bank via USB-A.

3. OPERATION

Basic Functions

The WUBEN C2 features a single side switch for all operations.

- **Turn On/Off:** Single click the side switch to turn the flashlight on or off.
- **Change Brightness Modes (Eco, Low, Medium, High):** When the flashlight is on, long press the side switch to cycle through Eco, Low, Medium, and High modes. The flashlight has a memory function and will turn on in the last used basic mode.

Advanced Modes

- **Turbo Mode:** Double click the side switch when the flashlight is on to activate Turbo mode (2000 lumens).
- **Strobe Mode:** Double click the side switch again from Turbo mode to activate Strobe mode.
- **SOS Mode:** Double click the side switch from Strobe mode to activate SOS mode.
- **Access Flashing Modes from Off:** Double click the side switch when the flashlight is off to directly enter Turbo mode. From Turbo, double click to cycle through Strobe and SOS.

7 Lighting Mode & 4800mAh



Turbo
2000 Lumens



High
1200 Lumens



Med
400 Lumens



Low
130 Lumens



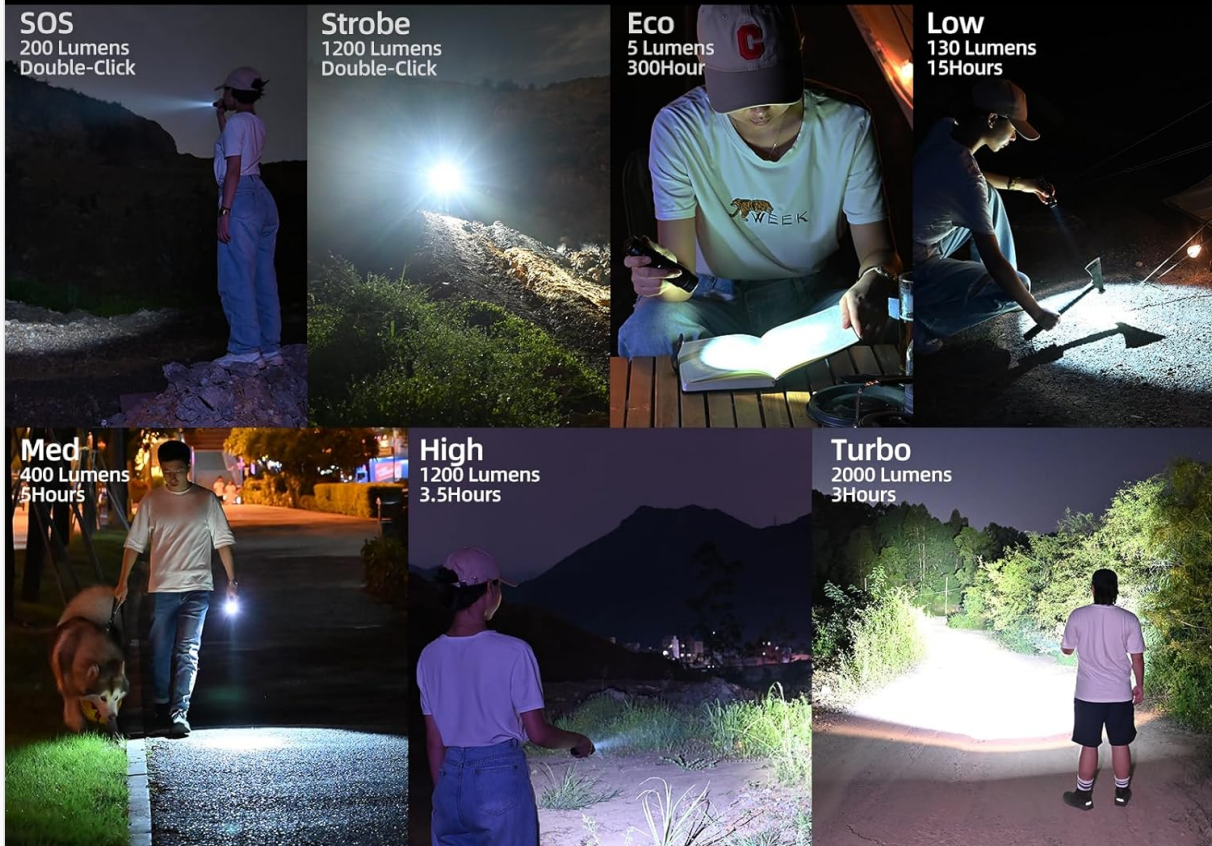
Eco
5 Lumens



Strobe
1200 Lumens



SOS
200 Lumens



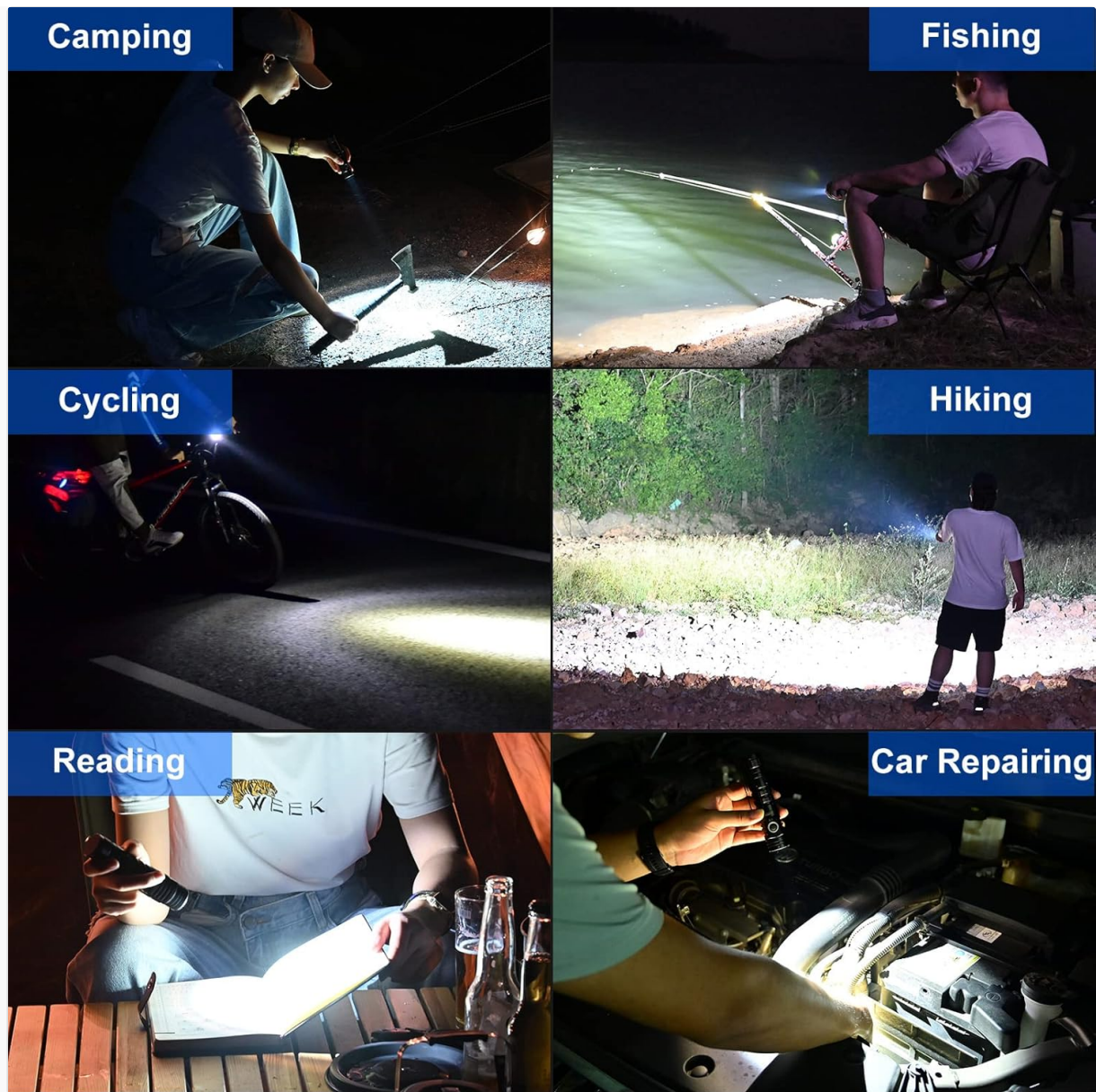
Overview of the 7 lighting modes and their respective lumen outputs and battery life.

Your browser does not support the video tag.

This video demonstrates the various lighting modes of the WUBEN C2 flashlight, including Eco, Low, Medium, High, Turbo, Strobe, and SOS, showcasing their brightness and functionality in a dark environment.

Power Bank Function

The WUBEN C2 can also serve as a portable power bank. Connect your device to the USB-A output port on the flashlight using a compatible cable to charge your device in an emergency.



The WUBEN C2 is suitable for a variety of applications, including outdoor activities and everyday tasks.

4. MAINTENANCE

Cleaning and Care

- Keep the flashlight clean, especially the lens and charging port. Use a soft, clean cloth to wipe surfaces.
- Avoid dropping the flashlight or subjecting it to severe impacts, despite its impact resistance.
- The WUBEN C2 is IP68 waterproof, meaning it can be submerged in up to 2 meters of water for up to 60 minutes. Ensure the charging port cover is securely closed before exposing it to water.

IP68 Waterproof

in up to 2m of water for up to 60 minutes



The WUBEN C2 is IP68 waterproof, capable of withstanding submersion.

Battery Care

- For optimal battery life, charge the flashlight regularly, even if not in frequent use.
- Store the flashlight in a cool, dry place when not in use for extended periods.
- If the flashlight will not be used for a long time, it is recommended to charge it every 3-6 months to maintain battery health.

5. TROUBLESHOOTING

Problem	Possible Cause	Solution
Flashlight does not turn on.	Low battery; Loose battery connection; Faulty switch.	Charge the battery; Ensure battery is inserted correctly; Contact customer support if issue persists.
Light output is dim.	Low battery; Lens is dirty.	Recharge the battery; Clean the lens with a soft cloth.

Problem	Possible Cause	Solution
Flashlight does not charge.	Charging cable faulty; Charging port dirty; Power source issue.	Try a different USB-C cable and power source; Clean the charging port gently.
Flashlight gets hot on high modes.	Normal operation for high lumen output.	This is normal. The flashlight has built-in thermal regulation to prevent overheating by automatically reducing brightness.

6. TECHNICAL SPECIFICATIONS

Feature	Specification
Model	T5C2
Light Source	SST40 6500K LED
Max Lumens	2000 Lumens
Max Beam Distance	358 Meters
Battery Type	4800mAh Rechargeable Lithium-Ion
Charging Port	USB Type-C
Power Bank Output	USB-A (5V/2A)
Water Resistance	IP68 (up to 2m for 60 minutes)
Impact Resistance	1.5 Meters
Material	Aircraft-grade 6061 T6 Aluminum
Dimensions	6.3"D x 1.1"W x 1.1"H (approx.)
Weight	0.36 Pounds (approx.)

7. WARRANTY AND SUPPORT

WUBEN products are manufactured to high-quality standards. For specific warranty details and duration, please refer to the warranty card included with your product or visit the official WUBEN website. Keep your purchase receipt as proof of purchase.

Protection Plans

Extended protection plans may be available for your WUBEN C2 Flashlight. These plans offer additional coverage beyond the standard manufacturer's warranty. Please check with your retailer or the WUBEN official channels for more information on available protection plans.

- 3-Year Protection Plan (e.g., via Asurion)
- 4-Year Protection Plan (e.g., via Asurion)

Customer Support

If you encounter any issues or have questions regarding your WUBEN C2 Flashlight, please contact WUBEN customer support. You can typically find contact information on the product packaging, the official WUBEN website, or through the retailer where you purchased the product. For online support and resources, visit the [WUBEN Store on Amazon](#).

© 2023 WUBEN. All rights reserved.