

## Manuals+

[Q & A](#) | [Deep Search](#) | [Upload](#)

[manuals.plus](#) /

› [DAZZLEEX](#) /

› [DAZZLEEX Zigbee Tuya Smart Circuit Breaker User Manual](#)

**DAZZLEEX w358920**

# DAZZLEEX Zigbee Tuya Smart Circuit Breaker User Manual

**Model:** w358920 (TO-Q-SY1)

**Brand:** DAZZLEEX

## 1. INTRODUCTION

---

The DAZZLEEX Zigbee Tuya Smart Circuit Breaker (Model TO-Q-SY1) is an advanced electrical device designed for intelligent control and monitoring of your home or industrial electrical systems. This device allows for remote operation via a mobile application, offering features such as intelligent protection, real-time power monitoring, and various timing functions. It is designed for DIN rail mounting, ensuring easy integration into existing electrical panels.



Figure 1: Front view of the DAZZLEEX Zigbee Tuya Smart Circuit Breaker, showing the power button and signal light.

# ZIGBEE DIN RAIL SWITCH MODEL TO-Q-SY1-JZT

INTO SMART WITH YOUR DIY IDEA  
Remote control by mobile phone ,Tuya Smart Edition

-  Timing Mode
-  Countdown Mode
-  Loop Timing
-  Metering Function  
(TO-Q-SY1-JZT)



Figure 2: Overview of the Zigbee DIN Rail Switch, highlighting its timing, countdown, loop timing, and metering functions.

## 2. IMPORTANT SAFETY INFORMATION

Please read all safety warnings and instructions carefully before installing or operating this device. Failure to follow these instructions may result in electric shock, fire, or serious injury.

- **Professional Installation Recommended:** Installation of this electrical device should only be performed by a qualified electrician or trained professional to ensure compliance with local electrical codes and safety standards.
- **Disconnect Power:** Always ensure that the main power supply is disconnected before performing any installation, wiring, or maintenance on the circuit breaker.
- **Avoid Moisture:** Do not expose the device to water, excessive humidity, or extreme temperatures. Operate only in dry environments.

- **Proper Wiring:** Ensure all wiring connections are secure and correctly matched (Live to L, Neutral to N) to prevent short circuits or damage.
- **Overload Protection:** Do not exceed the rated current of the device (10A for this model) to prevent overheating and potential fire hazards.
- **Children Safety:** Keep the device out of reach of children.

### 3. KEY FEATURES

---

- **Remote Control:** Control the circuit breaker from anywhere using the Tuya Smart Edition mobile application.
- **Intelligent Protection:** Remotely monitor the real-time status of connected electrical appliances and set switch states for various scenarios.
- **Timing Modes:** Supports multiple scheduling options including Timing Mode, Countdown Mode, and Loop Timing for automated control.
- **Real-time Power Monitoring:** View load current, voltage, power, and record electricity consumption over different time periods (for models with metering function).
- **Voice Control:** Compatible with voice assistants when connected to a Tuya Zigbee hub.
- **Durable Construction:** Made with high-precision manganese copper, flame-retardant PA66 shell, and a high-performance chip module for safety and longevity.
- **Easy Installation:** Designed for DIN rail mounting with a convenient positioning clip for simple setup. Features single-channel wiring with tunnel-type ports for secure connections.

# BENEFIT YOUR LIFE

## Make your finger to touch every corner!



**Remote**  
Control



**Voice**  
Control



**Timing**  
Mode



**Countdown**  
Mode



**Loop**  
Timing



**Real-time monitoring**  
Of electricity consumption  
(In TO-Q-SY1-JZT)



Figure 3: Detailed features including sleek design, high temperature resistance, single channel wiring, and positioning clip.

View load current, voltage, power in real time  
Record **(year, month, day, hour)**  
electricity consumption in different time periods



Total electricity  
consumption

**5.00kwh**

Month

Day

Year



(With metering)

12:00-13:00  
5.00kWh

1:00

13:00

24:00



03/19



Real-time monitoring electricity consumption.

Figure 4: Benefits such as remote control, voice control, timing modes, and real-time electricity consumption monitoring.

# High Quality From Good Material



Figure 5: Components highlighting high-precision manganese copper, flame-retardant shell, high-performance chip, and long-life motor system.

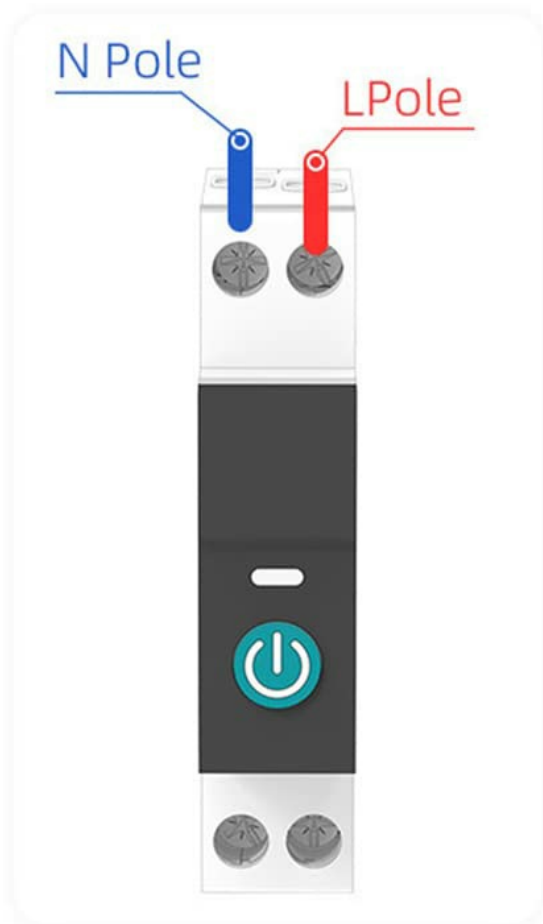
## 4. SETUP AND INSTALLATION

### 4.1 Wiring Instructions

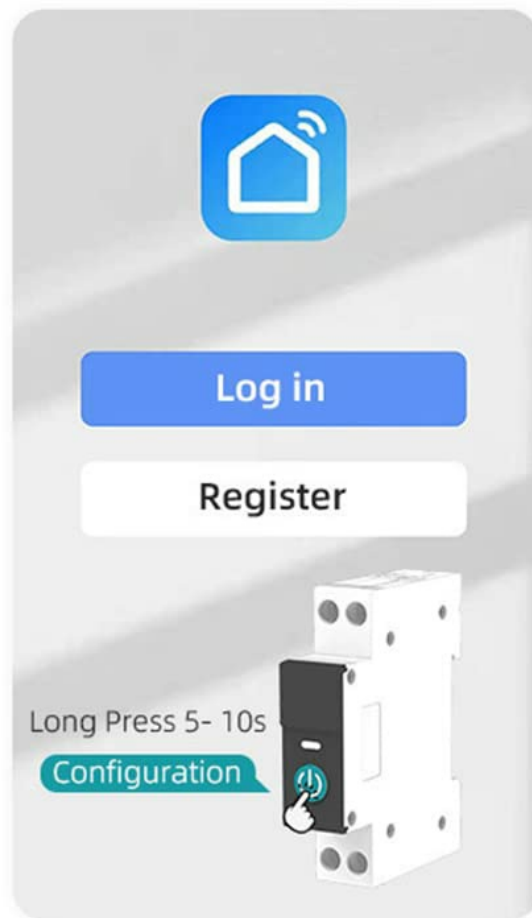
Before proceeding, ensure the main power supply to your electrical panel is completely disconnected. This device is designed for DIN rail mounting.

1. Mount the smart circuit breaker onto a standard DIN rail within your electrical panel.
2. Connect the live wire from the upper part of the WiFi DIN Rail Switch to the **L-pole** terminal.
3. Connect the neutral wire from the upper part of the WiFi DIN Rail Switch to the **N-pole** terminal.
4. Connect the load's live wire to the lower **L Load** terminal and the load's neutral wire to the lower **N Load** terminal.

5. Ensure all wiring connections are correct, secure, and provide a strong electrical signal.



1. To connect the wire from the upper of the WiFi Din Rail Switch, the live wire connect to the L pole, and the neutral wire connect to the N pole, please make sure that the wiring is correct and strong WiFi signal.



2. Turn on the Bluetooth and WiFi of the mobile phone, open the APP, and then long press the "power" button, wait for about 5-10 seconds, the LED indicator will flash blue light slowly.

Figure 6: Wiring diagram showing connections to N Pole and L Pole, and the corresponding load connections.

## 4.2 App Connection (Tuya Smart Edition)

To enable remote control and smart features, connect the device to the Tuya Smart app.

1. Download the **Tuya Smart** app from your mobile phone's app store (available for iOS and Android).
2. Register or log in to your Tuya Smart account.
3. Ensure your mobile phone's Bluetooth and WiFi are turned on.
4. Restore power to the circuit breaker.
5. On the circuit breaker, **long press the "power" button for 5-10 seconds**. The LED indicator will flash blue slowly, indicating it is in pairing mode.
6. Open the Tuya Smart app. The app should automatically detect the new device or prompt you to add it. Follow the on-screen instructions to complete the pairing process.
7. For Zigbee devices, a compatible Zigbee hub (e.g., Tuya Zigbee hub) is required for full functionality and integration with other smart devices and voice control.

Intelligently control the device after connecting it to most ZigBee hub, Tuya ZigBee hub required for its much more compatibility with zigbee devices than other hubs.



Figure 7: Diagram illustrating the connection of the Smart Zigbee Switch to a Wireless Gateway (Hub), WiFi Router, and control via APP and Voice.

## 5. OPERATING INSTRUCTIONS

### 5.1 Manual Control

The circuit breaker can be manually turned ON/OFF by pressing the physical power button on the device itself.

### 5.2 Remote Control via Tuya Smart App

Once successfully paired with the Tuya Smart app, you can control the circuit breaker remotely:

- Open the Tuya Smart app and select the DAZZLEEX Smart Circuit Breaker from your device list.
- Use the ON/OFF toggle within the app to switch the connected load.
- **Timing Mode:** Set specific times for the circuit breaker to turn ON or OFF automatically.

- **Countdown Mode:** Set a countdown timer for the circuit breaker to turn OFF after a specified duration.
- **Loop Timing:** Configure repetitive ON/OFF cycles based on your schedule.

### 5.3 Real-time Monitoring (with Metering Function)

For models equipped with the metering function, you can monitor electricity consumption directly from the app:

- Access the device details in the Tuya Smart app.
- View real-time load current, voltage, and power consumption.
- Review historical electricity consumption data by day, month, or year.

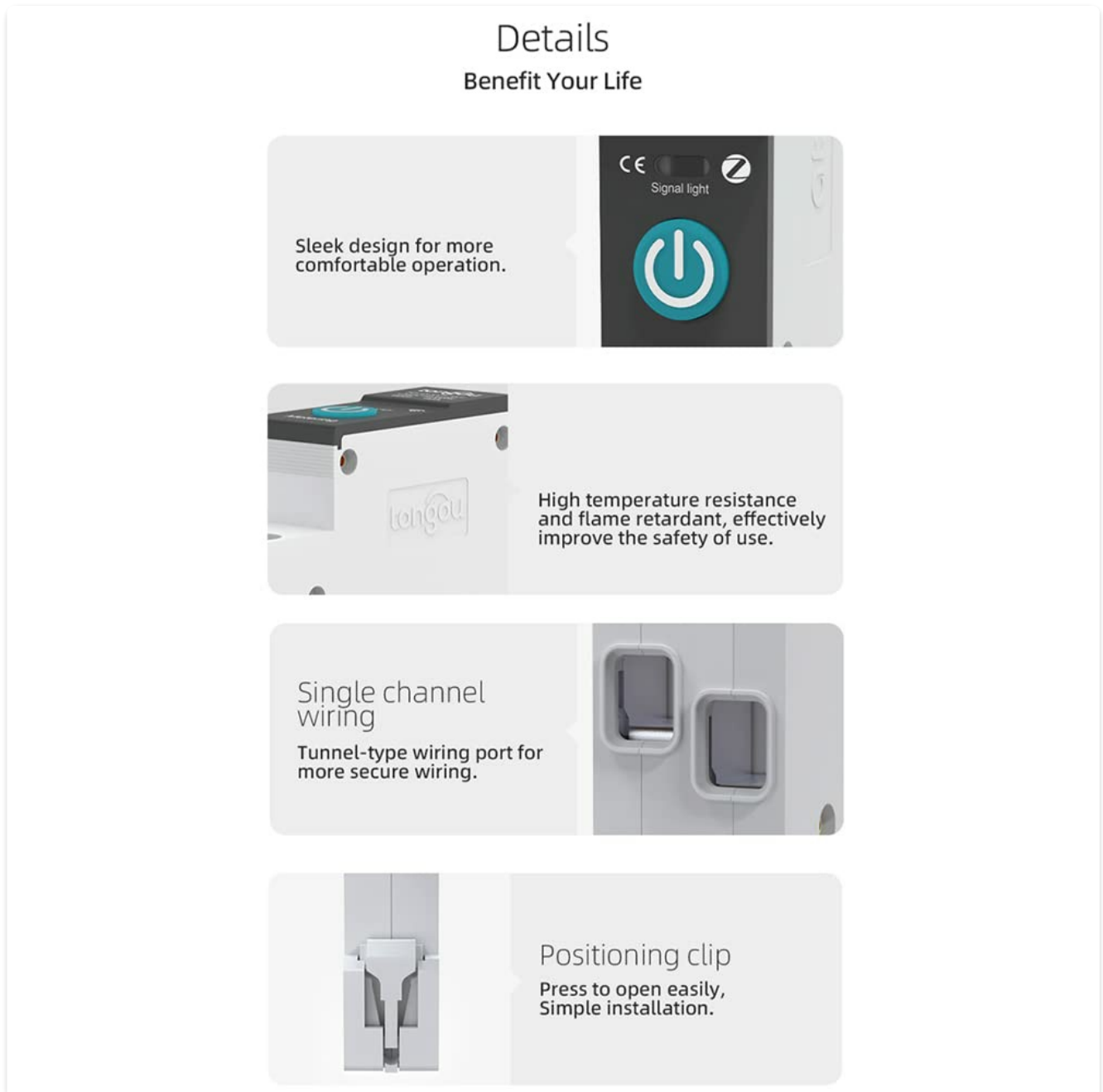


Figure 8: App interface showing real-time electricity consumption data, including total kWh and historical usage by month, day, or year.

### 5.4 Voice Control

If connected to a compatible Tuya Zigbee hub and integrated with voice assistants (e.g., Amazon Alexa, Google Assistant), you can control the circuit breaker using voice commands.

## 6. CARE AND MAINTENANCE

---

To ensure the longevity and optimal performance of your DAZZLEEX Smart Circuit Breaker, follow these maintenance guidelines:

- **Cleaning:** Gently wipe the exterior of the device with a dry, soft cloth. Do not use abrasive cleaners, solvents, or excessive moisture.
- **Environmental Conditions:** Ensure the device operates within its specified temperature and humidity ranges. Avoid dusty or corrosive environments.
- **Regular Checks:** Periodically inspect the wiring connections to ensure they remain secure. Any electrical checks or repairs should be performed by a qualified professional.
- **Firmware Updates:** Keep the Tuya Smart app updated to the latest version to receive performance improvements and new features. The device's firmware may also be updated via the app.

## 7. TROUBLESHOOTING

---

If you encounter issues with your DAZZLEEX Smart Circuit Breaker, refer to the following common problems and solutions:

Problem	Possible Cause	Solution
Device does not power on.	No power supply; incorrect wiring.	Check the main power supply. Verify all wiring connections are correct and secure.
Cannot connect to Tuya Smart app.	Incorrect pairing mode; weak WiFi signal; Bluetooth off; no Zigbee hub (if required).	Ensure the device is in pairing mode (LED flashing blue). Check WiFi signal strength. Turn on Bluetooth on your phone. Ensure a compatible Zigbee hub is connected and online.
Remote control not working.	No internet connection; device offline; app issue.	Check your home internet connection. Verify the device is online in the Tuya app. Restart the app or your phone.
Device frequently disconnects.	Weak WiFi/Zigbee signal; network interference.	Move the WiFi router or Zigbee hub closer to the device. Reduce interference from other wireless devices.
Metering data is inaccurate or not showing.	Device not fully configured; temporary app glitch.	Ensure the device is correctly configured in the app. Restart the app. If the issue persists, contact support.

If the problem persists after trying these solutions, please refer to the support section or contact customer service.

## 8. TECHNICAL SPECIFICATIONS

---

Feature	Specification
Model Type	TO-Q-SY1
Protocol	Zigbee (requires Zigbee hub)
Rated Operating Voltage Range	90V-240V
Control Type	Remote (App), Manual
Pole Description	1P+N (N Pole Pass-through)
Metering Function	Yes (with power meter function)
Rated Current	10A (for this specific variant)
Manufacturer	DAZZLEEX
Item Model Number	w358920
Mounting Type	DIN Rail Mount
Number of Poles	1
Shell Material	Flame-retardant PA66

## 9. WARRANTY INFORMATION

---

Specific warranty details for the DAZZLEEX Zigbee Tuya Smart Circuit Breaker are typically provided at the point of purchase or within the product packaging. Please retain your proof of purchase for any warranty claims.

For information regarding warranty periods, coverage, and terms, please refer to the documentation included with your product or contact the seller/manufacturer directly.

## 10. CUSTOMER SUPPORT

---

If you require further assistance, have questions not covered in this manual, or need technical support, please contact the manufacturer or your retailer.

- Refer to the contact information provided on the product packaging or the official DAZZLEEX website.
- Check the 'Help' or 'FAQ' section within the Tuya Smart app for common issues and solutions.

