

[Manuals.plus](#) /

> [Air Wick](#) /

> Air Wick Pure Automatic Air Freshener Spray Kit User Manual

Air Wick 6233898978

Air Wick Pure Automatic Air Freshener Spray Kit User Manual

Model: 6233898978

Brand: Air Wick

IMPORTANT SAFETY INFORMATION

KEEP OUT OF REACH OF CHILDREN AND PETS.

CAUTION: EYE IRRITANT. May be harmful if directly inhaled. May cause allergic reaction in some individuals. DO NOT spray towards face or body. DO NOT get in eyes. Avoid contact with skin. CONTAINER MAY EXPLODE IF HEATED. DO NOT puncture or incinerate container. DO NOT expose to heat or store at temperatures above 120F (49C). DO NOT position near heat or electrical sources. DO NOT spray into open flames. DO NOT spray directly onto surfaces. Hard surfaces may become slippery after spraying. In case of contact with surfaces, wipe immediately with damp cloth. Use in well-ventilated rooms away from sleeping areas. For adult use only. Product is not a toy. Contains propellants, petroleum solvent and fragrance. **FIRST AID:** If swallowed, DO NOT INDUCE VOMITING. IMMEDIATELY call a physician or Poison Control Center. If in eyes, IMMEDIATELY rinse eyes with water. Remove any contact lenses and continue rinsing eyes for at least 15 minutes. If irritation persists, get medical attention. If on skin, wash with soap and water. Discontinue use IMMEDIATELY and get medical attention if a reaction develops.

NOTE TO PARENTS: Use only as directed. Intentional misuse by deliberately concentrating and inhaling the contents can be harmful or fatal. Help stop inhalant abuse. For more information visit www.inhalant.org. DO NOT reuse battery.

PRODUCT OVERVIEW

The Air Wick Pure Automatic Air Freshener Spray Kit provides continuous fragrance to your home. It includes one automatic spray gadget and one fragrance refill.



Image: Air Wick Pure Automatic Air Freshener Spray Kit, showing the device, refill, and packaging.

SETUP INSTRUCTIONS

1. **Check Automatic Device:** Ensure the automatic device is in the OFF position. The control switch is located under the top cover of the device.



Image: Diagram illustrating the steps to open the device and insert the refill and battery.

2. Insert Refill:

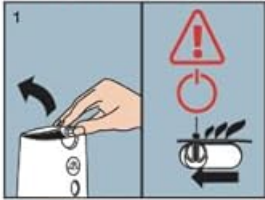
- Open the device by holding the bottom half, then twist the top half counter-clockwise.
- Insert the aerosol refill into the bottom half of the device.
- To close the device, place the top half over the bottom half and twist clockwise to lock together until a click is heard, ensuring the spray nozzle/hole is pointing away from the face.
- Ensure the device is fully closed.

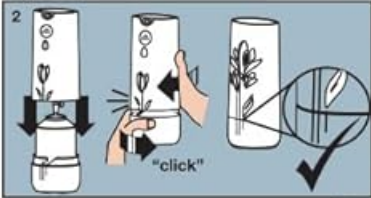
3. Insert Battery:

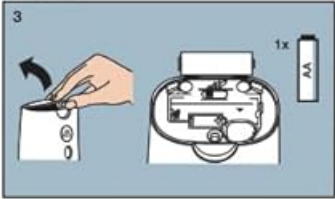
The battery is placed under the top cover of the device. Insert one 1AA/LR6 alkaline battery. Ensure the positive (+) and negative (-) terminals are aligned correctly.


4. **Positioning:** Device should be placed at least 2 meters (6 feet) from the floor level.

Directions for use for Freshmatic® automatic spray device


1  **BEFORE YOU START:**
Check that your automatic device is in the OFF position. The control switch is located under the top cover of the device.

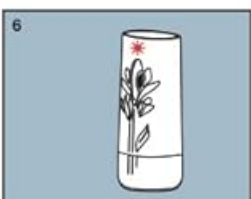
2  **INSERT REFILL:**
a. Open the device by holding the bottom half, then twist the top half counter clockwise.
b. Insert the aerosol refill into the bottom half of the device.
c. To close the device, place the top half over the bottom half and twist clockwise to lock together until a click can be heard, **ensuring the spray nozzle/hole is pointing away from the face.**
d. Ensure the device is fully closed.

3  **INSERT BATTERY:**
The battery is placed under the top cover of the device. Insert 1AA/LR6 Alkaline battery. Ensure the positive (+) and negative (-) terminals are aligned correctly.

4  **SET FRAGRANCE INTENSITY:**
When turned ON, the device will spray after a delay of 15 seconds. Set the fragrance intensity control to the needs of your home: Low (40mins), Medium (18 mins) or High (9 mins).

AND DON'T FORGET!

5  Device should be placed at least 6 feet/1.83m from the floor level.

6  A red light will indicate the refill is nearly empty. **Directing the device away from the face**, slide the control switch to the OFF position. Replace the aerosol refill and select your chosen fragrance intensity level.

Read Safety Instructions Carefully Before Use. Retain Instructions for Future Use. Troubleshooting: If there is no spray, switch off the device and check that the battery is inserted correctly.

KEEP OUT OF REACH OF CHILDREN AND PETS CAUTION:
EYE IRRITANT. May be harmful if directly inhaled. May cause allergic reaction in some individuals. **DO NOT** spray towards face or body. **DO NOT** get in eyes. Avoid contact with skin. **CONTAINER MAY EXPLODE IF HEATED. DO NOT** puncture or incinerate container. **DO NOT** expose to heat or store at temperatures above 120F (49C). **DO NOT** position near heat or electrical sources. **DO NOT** spray into open flames. **DO NOT** spray directly onto surfaces. Hard surfaces may become slippery after spraying. In case of contact with surfaces, wipe immediately with damp cloth. Use in well-ventilated rooms away from sleeping areas. For adult use only. Product is not a toy. Contains propellants, petroleum solvent and fragrance. **FIRST AID: If swallowed, DO NOT INDUCE VOMITING. IMMEDIATELY call a**

physician or Poison Control Center. If in eyes, IMMEDIATELY rinse eyes with water. Remove any contact lenses and continue rinsing eyes for at least 15 minutes. If irritation persists, get medical attention. If on skin, wash with soap and water. Discontinue use IMMEDIATELY and get medical attention if a reaction develops.

NOTE TO PARENTS: Use only as directed. Intentional misuse by deliberately concentrating and inhaling the contents can be harmful or fatal. Help stop inhalant abuse. For more information visit www.inhalant.org.
DO NOT reuse battery.

Image: Diagram illustrating the recommended minimum height for device placement (2 meters or 6 feet from the floor).

5. Set Fragrance Intensity:

When turned ON, the device will spray after a delay of 15 seconds. Set the fragrance intensity control to the needs of your home: Low (40 minutes), Medium (18 minutes) or High (9 minutes).

6. Initial Spray: After setting the intensity, the device will spray after a 15-second delay. Ensure the spray nozzle is not directed towards your face.

7. Usage Locations: Suitable for use in various rooms including living rooms, bathrooms, hallways, kitchens, dens, and offices.



Image: Icons depicting various rooms where the Air Wick automatic spray can be used, such as kitchen, office, living room, and bathroom.

OPERATING INSTRUCTIONS

Once set up, the Air Wick Automatic Air Freshener will automatically release bursts of fragrance at your chosen interval (9, 18, or 40 minutes). The device features 24/7 OdorProtect technology to continuously fight odors.

- To adjust the fragrance intensity, rotate the control switch located on the device.
- Each refill provides continuous fragrance for up to 60 days on the low setting. The latest device provides up to 70 days per refill on the low setting.

MAINTENANCE

- **Refill Replacement:** A red light will indicate when the refill is nearly empty. Directing the device away from the face, slide the control switch to the OFF position. Replace the aerosol refill and select your chosen fragrance intensity level.

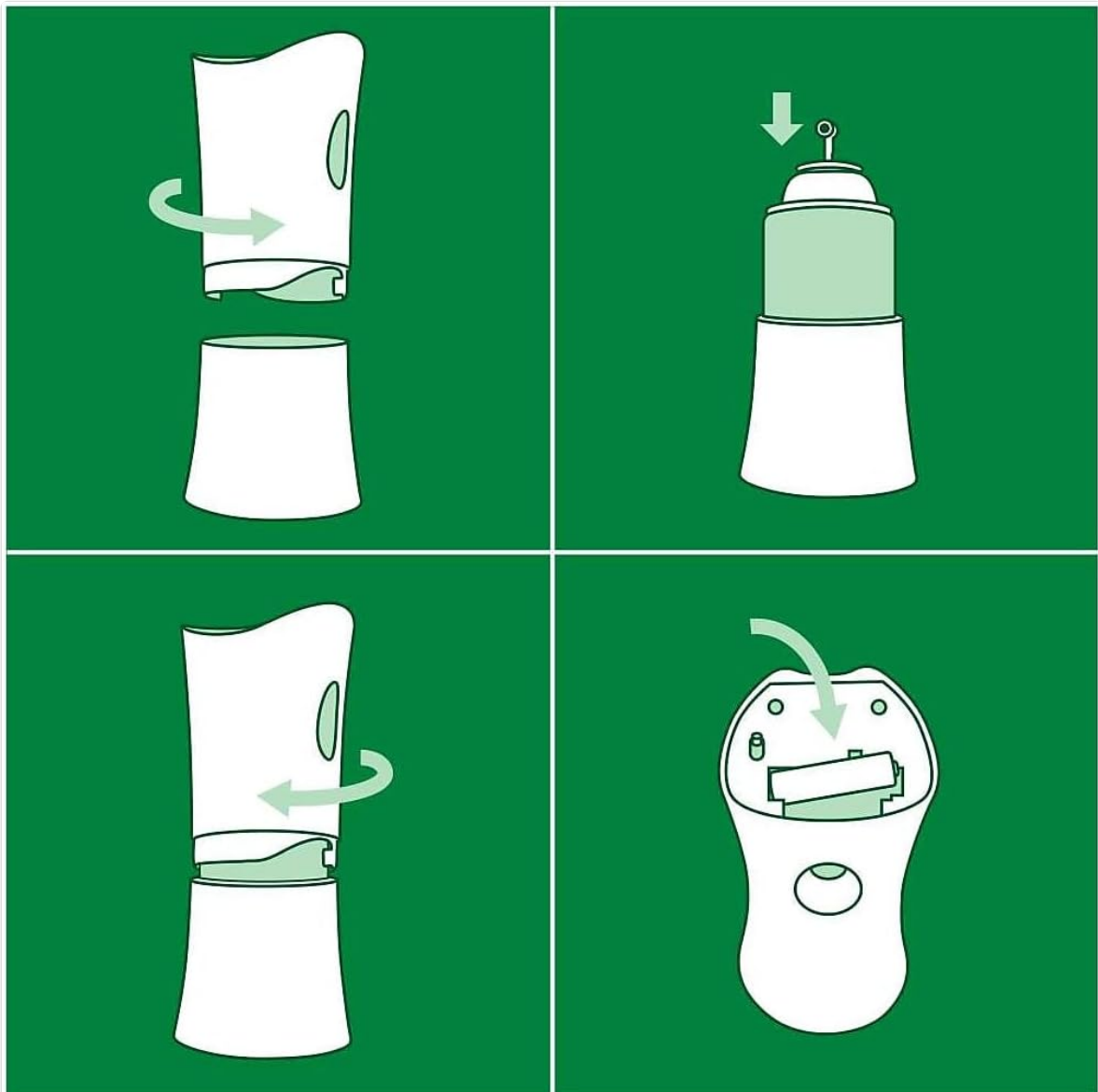


Image: Diagram illustrating the steps for replacing the fragrance refill in the automatic spray device.

- **Battery Replacement:** If the device stops spraying and the red light is not illuminated, the battery may need replacement. Ensure the device is OFF before replacing the battery. Do not reuse old batteries.
- **Cleaning:** If any spray lands on hard surfaces, wipe immediately with a damp cloth to prevent slipperiness.

TROUBLESHOOTING

- **Device not spraying:**
 - Ensure the device is turned ON.
 - Check if the refill is empty (red light indicator). Replace if necessary.
 - Verify that the battery is inserted correctly with positive (+) and negative (-) terminals aligned.
 - Replace the battery if it is depleted.
- **Weak fragrance:**
 - Adjust the fragrance intensity setting to a higher level.
 - Ensure the refill is not nearing empty.
- **Device making unusual noise:**
 - Turn the device OFF, remove the refill and battery, then reassemble.
 - If the issue persists, contact customer support.

SPECIFICATIONS

Feature	Detail
Product Dimensions	7.63 x 5.94 x 7.97 inches
Item Weight	1.06 Pounds
Model Number	6233898978
Scent	Fresh Water
Item Form	Aerosol
Battery Type	1 AA/LR6 Alkaline Battery (included)
Refill Duration (Low Setting)	Up to 60-70 days

WARRANTY AND SUPPORT

For warranty information or customer support, please refer to the manufacturer's official website or contact their customer service department. Keep your purchase receipt for any warranty claims.

Manufacturer: RECKITT