

## Aroepurt Sky Device Elite B65, DYH-SSG

# Aroepurt Instruction Manual for Sky Device Elite B65 Phone Case

**MODEL: DYH-SSG**

Compatible with Sky Device Elite B65 Smartphone

## INTRODUCTION

This manual provides comprehensive instructions for the installation, operation, and maintenance of your Aroepurt Sky Device Elite B65 Phone Case with Tempered Glass Screen Protector. Please read this manual carefully before use to ensure proper installation and to maximize the lifespan of your product.

## SETUP AND INSTALLATION

### 1. Installing the Tempered Glass Screen Protector

Follow these steps to correctly apply the tempered glass screen protector to your Sky Device Elite B65 phone.

# Install Guide:



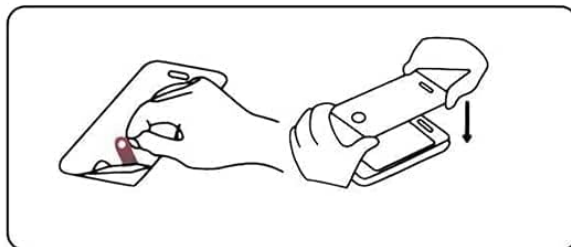
## Step 1

Gently clean phone screen with included wet wipe 1, then dry wipe 2.



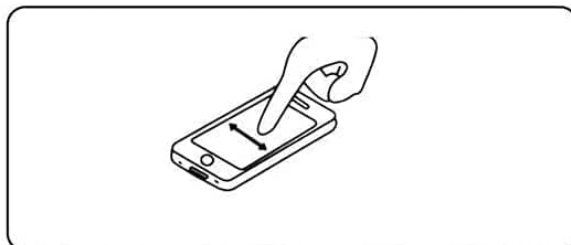
## Step 2

Use included dust absorber to remove all dust on phone screen.



## Step 3

Peel off the film on the back of the screen protector.



## Step 4

Align the screen protector to the screen and press the middle part with finger.

**Image:** Step-by-step visual guide for installing the tempered glass screen protector.

### 1. Step 1: Clean the Screen

Gently clean your phone screen using the included wet wipe (Wipes 1), then dry it thoroughly with the dry wipe (Wipes 2). Ensure no dust or smudges remain.

### 2. Step 2: Remove Dust

Use the provided dust absorber sticker to remove any remaining dust particles from the phone screen.

### 3. Step 3: Prepare Protector

Carefully peel off the protective film from the adhesive side of the tempered glass screen protector. Avoid touching the adhesive surface.

### 4. Step 4: Align and Apply

Align the screen protector precisely with your phone's screen, ensuring it matches the edges and cutouts. Once aligned, gently press the middle part of the protector with your finger. The adhesive will spread automatically.

## 2. Installing the Phone Case

After the screen protector is applied, install the protective case.

### 1. Step 1: Insert Phone

Gently place your Sky Device Elite B65 phone into the soft silicone frame of the case, ensuring all edges are securely fitted.

### 2. Step 2: Check Fit

Verify that all buttons, ports, and camera cutouts align correctly with the case.

## OPERATING INSTRUCTIONS AND FEATURES

### Case Design and Protection

The Aroepurt case for Sky Device Elite B65 is engineered for robust protection and enhanced usability.



**Image:** Front and back view of the Aroepurt case, showing the integrated ring stand and included screen protector.

- **Dual-Layer Construction:** The case features a combination of a hard PC (Polycarbonate) back panel and a soft silicone frame, providing comprehensive protection against drops and impacts.
- **Shock Airbags:** Equipped with four-corner shock airbags, the case effectively absorbs impact from accidental drops, safeguarding your device.
- **Elevated Edges:** The case design includes raised edges around the camera and screen areas, offering additional protection when the phone is placed on flat surfaces.
- **Silver Reflective Plating Style:** The back panel features a frosted surface with a silver reflective plating, offering a delicate feel and a unique aesthetic. This design incorporates an ultra-high definition pattern layer and a clear, scratch-resistant surface layer.

# Shockproof

2 in 1, hard PC + soft silicone  
Four corner thickening  
With Shock Airbags



**Image:** Illustration highlighting the 2-in-1 hard PC + soft silicone construction and four-corner shock airbags for enhanced protection.

# Silver reflective plating style

Silver reflective plating (different effects reflected at different angles) + high-definition airbrush pattern

Frosted surface, Scratch-free and fingerprint-free



Ultra HD print pattern layer

Silver reflective coating

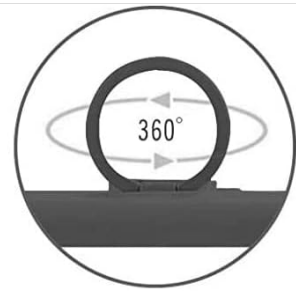
PC rugged protective backplate

**Image:** Diagram showing the multi-layered back panel with silver reflective coating and ultra HD print pattern, providing a frosted, scratch-free, and fingerprint-free surface.

## Integrated Ring Support and Magnetic Car Mount Compatibility

The case includes an adhesive metal finger ring support for added functionality.





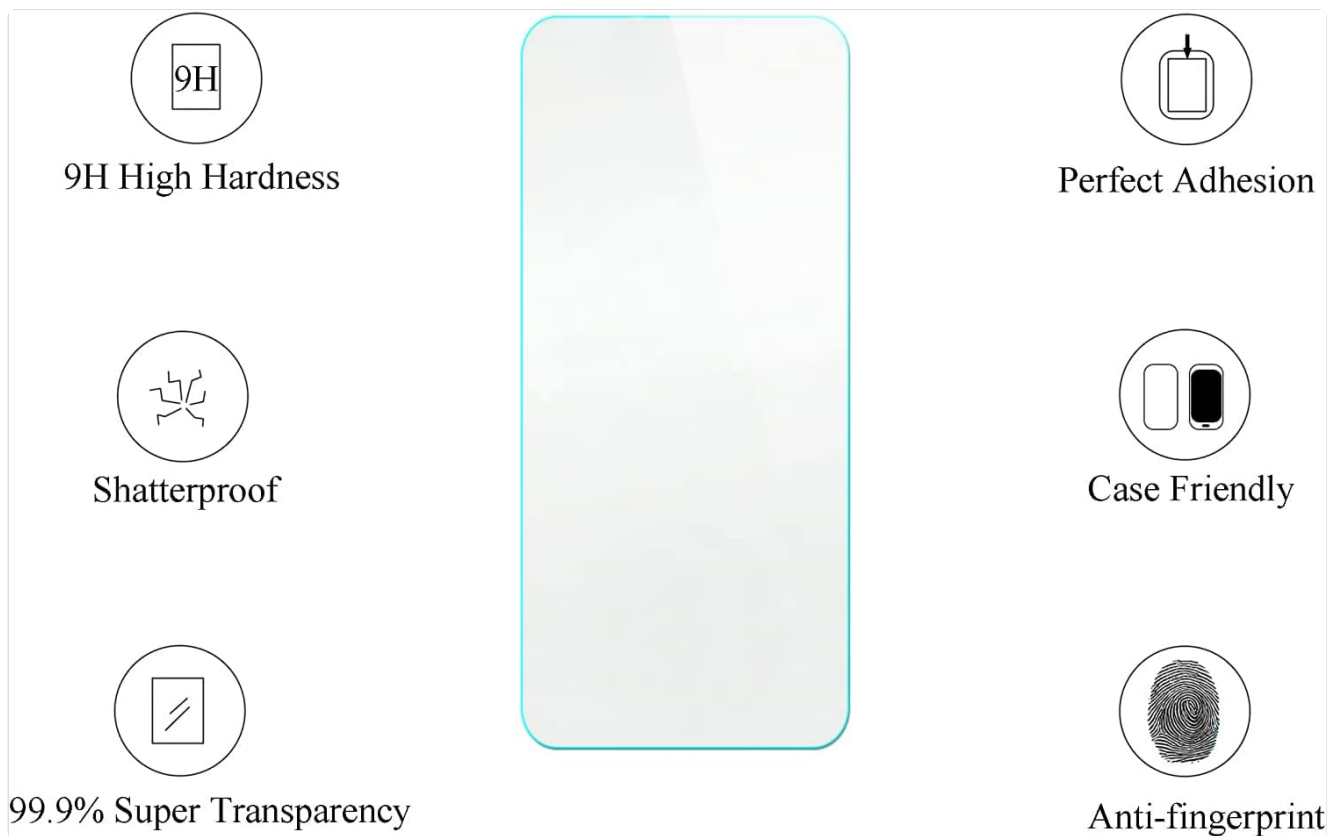
## SUPPORT MAGNETIC CAR MOUNT

Support multi-angle stand.  
not support wireless charging.



**Image:** Illustration demonstrating how the ring stand facilitates comfortable one-hand operation, allowing easier access to all areas of the screen.

- **Finger Ring Stand:** The adhesive metal finger ring can be attached to the case or used separately. It rotates 360 degrees, providing a secure grip and functioning as a multi-angle kickstand for hands-free viewing.
- **Magnetic Car Mount Compatibility:** The metal ring allows for direct attachment to magnetic car mounts, offering convenient navigation and accessibility while driving. *Note: This product does not support wireless charging when the metal ring is attached.*



**Image:** Visual representation of the 180-degree and 360-degree rotation of the ring stand, and its compatibility with magnetic car mounts. A note indicates that wireless charging is not supported.

## Tempered Glass Screen Protector Features

The included tempered glass screen protector offers additional screen defense.



## Scratch Proof

Scratch proof screen effectively avoids sharp objects scratching or abrasion



**Image:** Icons illustrating key features of the screen protector: 9H High Hardness, Perfect Adhesion, Shatterproof, Case Friendly, 99.9% Super Transparency, and Anti-fingerprint properties.

- **9H High Hardness:** Provides superior scratch resistance against sharp objects.
- **Shatterproof:** Designed to resist shattering into dangerous shards upon impact.
- **High Transparency:** Maintains 99.9% optical clarity for an uncompromised viewing experience.
- **Anti-fingerprint:** Features an oleophobic coating to reduce smudges and fingerprints.
- **Case Friendly:** Designed to fit seamlessly with most phone cases, including the Aroepurt case.



# One-Hand Operation

Touch more spots on the screen



**Image:** Visual demonstration of the screen protector's scratch-proof capabilities, showing resistance against sharp objects like a hammer.

## MAINTENANCE

Proper care will extend the life and appearance of your phone case and screen protector.

- **Cleaning the Case:** To clean the silicone frame and PC back panel, gently wipe with a soft, damp cloth. For stubborn dirt, a small amount of mild soap can be used, followed by wiping with a clean, damp cloth and air drying. Avoid harsh chemicals or abrasive materials.
- **Cleaning the Screen Protector:** Use a microfiber cloth to wipe away fingerprints and smudges. For deeper cleaning, a screen cleaner spray designed for electronics can be applied to the cloth (not directly to the screen) and then used to wipe the protector.
- **Ring Stand Care:** Ensure the ring stand mechanism remains free of debris. If it becomes loose, check its adhesive attachment.

## TROUBLESHOOTING

Here are solutions to common issues you might encounter.

- **Screen Protector Bubbles:** If small bubbles appear after installation, gently push them towards the nearest edge using a soft cloth or a credit card wrapped in cloth. For persistent bubbles, lift the nearest edge slightly and re-apply, ensuring no dust is trapped.
- **Case Not Fitting Properly:** Ensure your phone model is indeed the Sky Device Elite B65. Remove the phone from the case and re-insert it, making sure all corners and edges snap into place correctly. Check for any obstructions.
- **Buttons Difficult to Press:** If the case buttons feel stiff, ensure the phone is seated correctly within the case. Over time, the silicone material may soften slightly, making buttons easier to press.
- **Ring Stand Loosening:** If the adhesive ring stand becomes loose, ensure the surface it's attached to is clean and dry. Re-apply pressure for a few seconds. If the adhesive has lost its stickiness, it may need replacement.

## SPECIFICATIONS

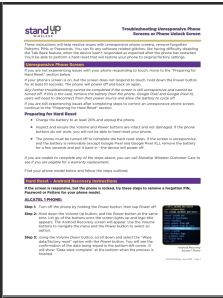
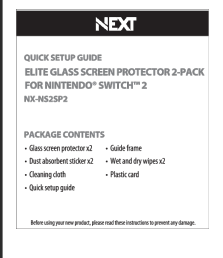

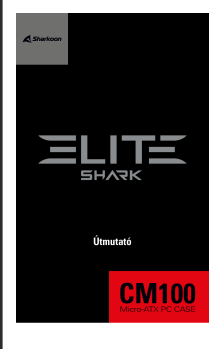
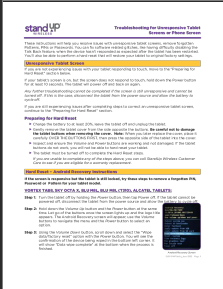

Feature	Detail
Brand	Aroepurt
Model Number	DYH-SSG
Compatible Devices	Sky Device Elite B65
Material Type	PC hard back panel + soft silicone frame + metal support finger ring
Special Features	Finger ring + support + car bracket magnetic suction, Shock Airbags, Silver Reflect Light finish
Form Factor	Solid protection with support
Mounting Hardware	Screen Protector
Product Dimensions	1 x 1 x 1 cm; 70 g (approximate)

## WARRANTY AND SUPPORT

For warranty information or technical support, please refer to the retailer's policy or contact Aroepurt customer service directly. Contact details are typically available on the product packaging or the official Aroepurt website.

When contacting support, please have your product model number (DYH-SSG) and purchase details ready.

Related Documents - Sky Device Elite B65, DYH-SSG

	<p><a href="#">Troubleshooting Unresponsive Phone Screens and Unlock Issues   StandUp Wireless</a></p> <p>Comprehensive guide from StandUp Wireless on how to troubleshoot unresponsive phone screens and unlock issues, including step-by-step hard reset instructions for various phone models like Alcatel, Vortex, Sky Elite, Blu, and Google Pixel.</p>
	<p><a href="#">NEXT Elite Glass Screen Protector 2-Pack for Nintendo Switch 2 - Quick Setup Guide</a></p> <p>Step-by-step installation guide for the NEXT Elite Glass Screen Protector 2-Pack (NX-NS2SP2) for Nintendo Switch 2, including package contents and application instructions.</p>
	<p><a href="#">Sky Smart per Sky Glass + Offerta Sky Wifi: Trasparenza Tariffaria e Costi</a></p> <p>Informazioni dettagliate sulla trasparenza tariffaria per l'abbonamento Sky Smart con Sky Glass e Sky Wifi, inclusi canoni mensili, opzioni pacchetti e costi per recesso anticipato o rimozione pacchetti.</p>
	<p><a href="#">Sharkoon ELITE SHARK CM100 Micro-ATX PC Case Installation Guide</a></p> <p>Detailed installation guide and technical specifications for the Sharkoon ELITE SHARK CM100 Micro-ATX PC Case. Learn about its features, compatibility, safety instructions, and assembly steps.</p>
	<p><a href="#">Troubleshooting Unresponsive Tablet Screens and Forgotten Passwords   StandUp Wireless</a></p> <p>This guide from StandUp Wireless provides step-by-step instructions for troubleshooting unresponsive tablet screens and resolving issues like forgotten PINs, Patterns, or Passwords. Learn how to perform a hard reset on various models including Vortex Tab8, Sky Octa X, BLU M8L, NUU Tablet, and Sky Elite T8, and fix software glitches.</p>
	<p><a href="#">Kärcher SSG Pressure Washer Operator's Manual - Safety, Operations, and Maintenance Guide</a></p> <p>Comprehensive operator's manual for the Kärcher SSG pressure washer, covering safety instructions, operating procedures, maintenance schedules, and troubleshooting tips. Learn how to safely use and maintain your Kärcher SSG unit.</p>

