

RL LIVE YOUR LIGHT R67142132

RL LIVE YOUR LIGHT Alesund R67142132 LED Ceiling Fan User Manual

Model: R67142132

Brand: RL LIVE YOUR LIGHT

1. INTRODUCTION

Thank you for choosing the RL LIVE YOUR LIGHT Alesund R67142132 LED Ceiling Fan. This manual provides essential information for the safe installation, operation, and maintenance of your new ceiling fan. Please read this manual thoroughly before installation and keep it for future reference.

This modern ceiling fan features a powerful 60-watt fan with three speed settings and a timer function, combined with a 20-watt LED light. The LED light offers adjustable brightness and continuous color temperature adjustment from warm white (2700K) to cool white (6500K), all controllable via the included remote control.



Image 1.1: The Alesund R67142132 LED Ceiling Fan in Matt Black.

2. SAFETY INFORMATION

Always follow basic safety precautions when installing and operating electrical appliances to reduce the risk of fire, electric shock, and personal injury.

- Ensure the power supply is disconnected before installation, maintenance, or cleaning.
- Installation must be performed by a qualified electrician in accordance with local wiring regulations.

- The mounting structure must be capable of supporting the weight of the fan (approx. 4.98 kg).
- Do not insert any objects into the fan blades while the fan is operating.
- This product contains a light source of energy efficiency class F.
- Keep the remote control out of reach of children.

3. PACKAGE CONTENTS

Carefully unpack all components and check for any damage. If any parts are missing or damaged, contact your retailer immediately.

- Ceiling Fan Motor Housing with Integrated LED Light
- Fan Blades (3 pieces)
- Downrod and Canopy
- Mounting Bracket
- Remote Control
- Hardware Pack (screws, washers, wire nuts)
- User Manual (this document)

4. SETUP AND INSTALLATION

Before beginning installation, ensure all power to the circuit is turned off at the main fuse box or circuit breaker.

1. **Prepare Mounting Location:** Securely attach the mounting bracket to a ceiling joist or a suitable electrical junction box capable of supporting the fan's weight. Ensure the location allows for proper blade clearance (minimum 2.3 meters from floor to blades).
2. **Assemble Downrod and Canopy:** Feed the electrical wires from the fan motor through the downrod. Attach the downrod to the fan motor housing and secure it with the provided pin and screw. Slide the canopy over the downrod.
3. **Hang the Fan:** Carefully lift the fan assembly and hang it on the mounting bracket hook. This will free your hands for wiring.
4. **Wire the Fan:** Connect the fan's electrical wires to the household wiring according to the wiring diagram provided in the full installation guide (not included in this summary). Ensure all connections are secure and insulated with wire nuts.
5. **Secure the Fan:** Once wiring is complete, carefully lift the fan off the hook and secure the canopy to the mounting bracket with the provided screws.
6. **Attach Fan Blades:** Securely attach each fan blade to the motor housing using the provided screws. Ensure all blades are firmly attached.
7. **Install Light Cover:** Attach the LED light cover to the bottom of the fan housing.

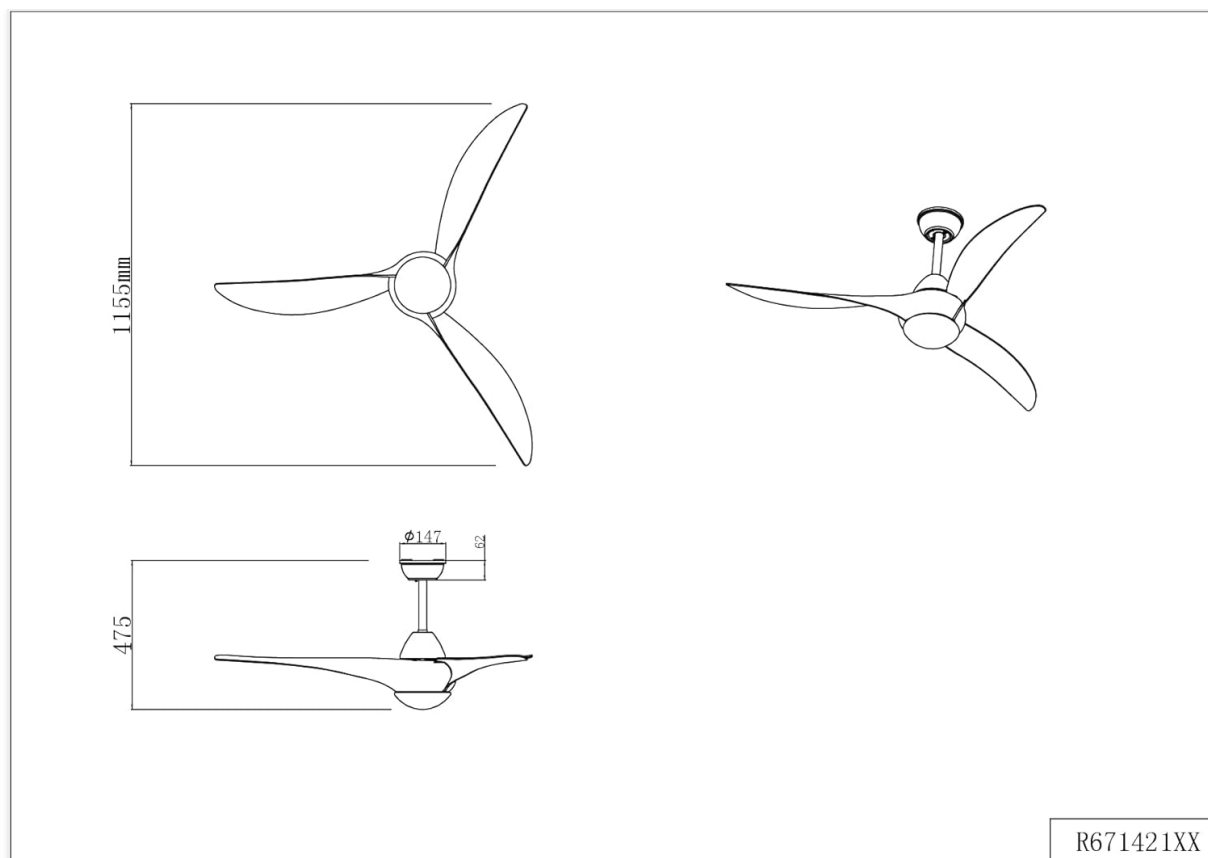


Image 4.1: Technical drawing showing dimensions (115.5 cm diameter, 47.5 cm height).

5. OPERATING INSTRUCTIONS

Your Alesund ceiling fan is operated via the included remote control.

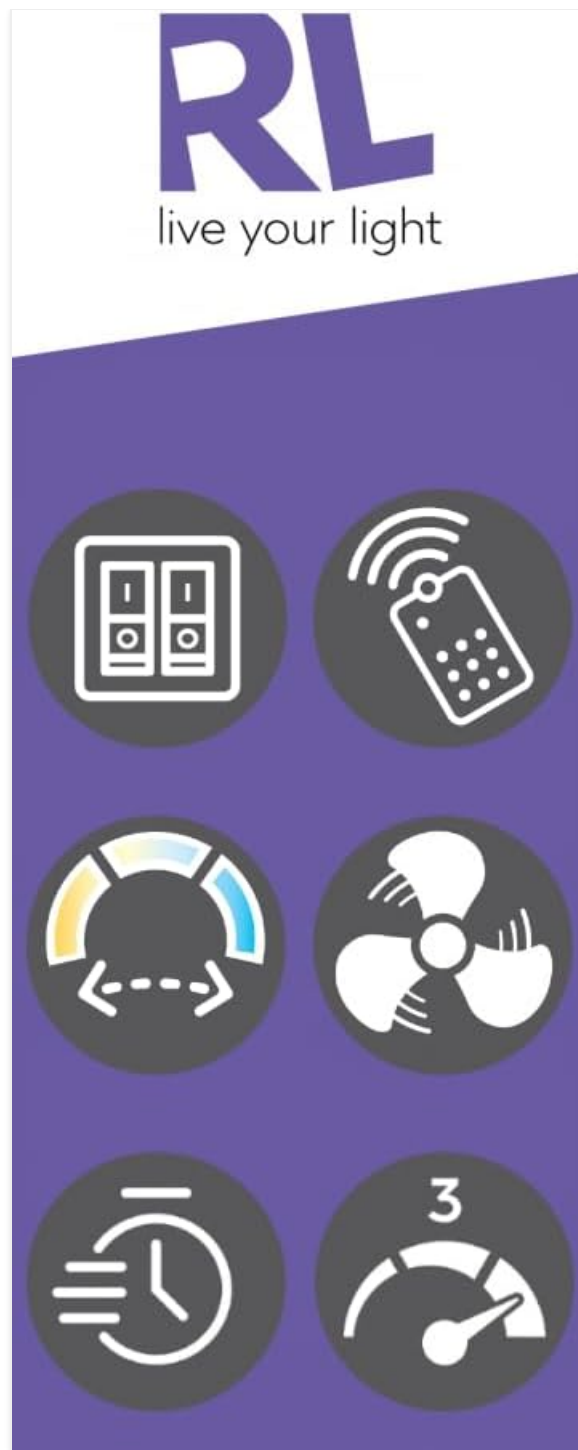


Image 5.1: Key features of the Alesund ceiling fan.

5.1 Fan Operation

- **Power On/Off:** Press the fan button on the remote control to turn the fan on or off.
- **Speed Control:** Use the speed buttons (usually indicated by 1, 2, 3 or fan icons) to cycle through the three available fan speeds (low, medium, high).
- **Timer Function:** Activate the timer function (if available on remote) to set the fan to turn off automatically after a preset duration. Refer to the remote control's specific instructions for timer settings.

5.2 Light Operation

- **Light On/Off:** Press the light button on the remote control to turn the LED light on or off.
- **Brightness Adjustment (Dimmer):** Use the dimmer buttons (often +/- or up/down arrows) to freely adjust the brightness of the LED light.

- **Color Temperature Adjustment:** Use the color temperature buttons (often indicated by sun icons or CCT) to continuously adjust the light color from 2700 Kelvin (warm white) to 4000 Kelvin (neutral white) to 6500 Kelvin (cold white).



Image 5.2: The Alesund ceiling fan with its integrated LED light illuminated.

6. MAINTENANCE

Regular maintenance will ensure the longevity and optimal performance of your ceiling fan.

- **Cleaning:** To clean the fan, wipe the surfaces with a soft, damp cloth. Do not use abrasive cleaners or solvents, as these may damage the finish. Ensure the power is off before cleaning.
- **Blade Cleaning:** Dust the fan blades regularly to prevent dust buildup, which can affect fan balance and performance.
- **Tighten Fasteners:** Periodically check all screws and fasteners on the fan and mounting hardware to ensure they are secure.
- **Light Source:** The integrated LED light source has an average life of 30,000 hours and is not user-replaceable. If the LED fails, professional service may be required.

7. TROUBLESHOOTING

If you experience issues with your ceiling fan, refer to the following common problems and solutions:

Problem	Possible Cause	Solution
Fan does not start	No power supply; Loose wiring; Remote control battery low.	Check circuit breaker/fuse; Verify wiring connections (consult electrician); Replace remote control batteries.
Light does not turn on	No power supply; Loose wiring; LED failure.	Check power; Verify wiring; Contact customer support if LED is faulty.

Problem	Possible Cause	Solution
Fan wobbles	Loose blades or mounting hardware; Unbalanced blades.	Ensure all screws are tight; Check for bent blades; Use a balancing kit (not included) if necessary.
Remote control not working	Low battery; Remote not paired.	Replace batteries; Refer to remote control instructions for pairing procedure.

If the problem persists after attempting these solutions, please contact customer support.

8. SPECIFICATIONS

Feature	Detail
Model Number	R67142132
Brand	RL LIVE YOUR LIGHT
Colour	Matt Black
Material	Plastic
Product Dimensions (Diameter x Height)	115.5 cm x 47.5 cm
Item Weight	4.98 kg
Fan Motor Power	60 Watts
LED Light Power	20 Watts
Voltage	120 Volts
Luminous Flux (Max)	2300 Lumens
Color Temperature Range	2700K (Warm White) to 6500K (Cold White)
Special Features	Dimmable, Remote Control, Timer Function, 3 Fan Speeds
Energy Efficiency Class	F

9. WARRANTY AND SUPPORT

For warranty information and customer support, please refer to the documentation provided at the time of purchase or contact your retailer. Keep your proof of purchase for any warranty claims.

For recycling information regarding this product, please refer to local regulations or the manufacturer's website. This product is designed to be disassembled for separate verification of the included light source(s) for recycling purposes.

