

Veise RZ09

Veise RZ09 Smart Lock Instruction Manual

Model: RZ09

1. INTRODUCTION

This manual provides detailed instructions for the installation, setup, operation, and maintenance of your Veise RZ09 Smart Lock. Please read this manual thoroughly before installation and use to ensure proper function and safety.

2. PRODUCT OVERVIEW

2.1 Package Contents

The Veise RZ09 Smart Lock package includes the following components:

- Fingerprint Smart Lock with Handle
- Installation Instruction Manual
- Mounting Plate
- 2 Mechanical Keys
- 2 IC Cards (Fobs)
- Programming Quick Setup Guide
- Screws
- Latch
- Strike Plate

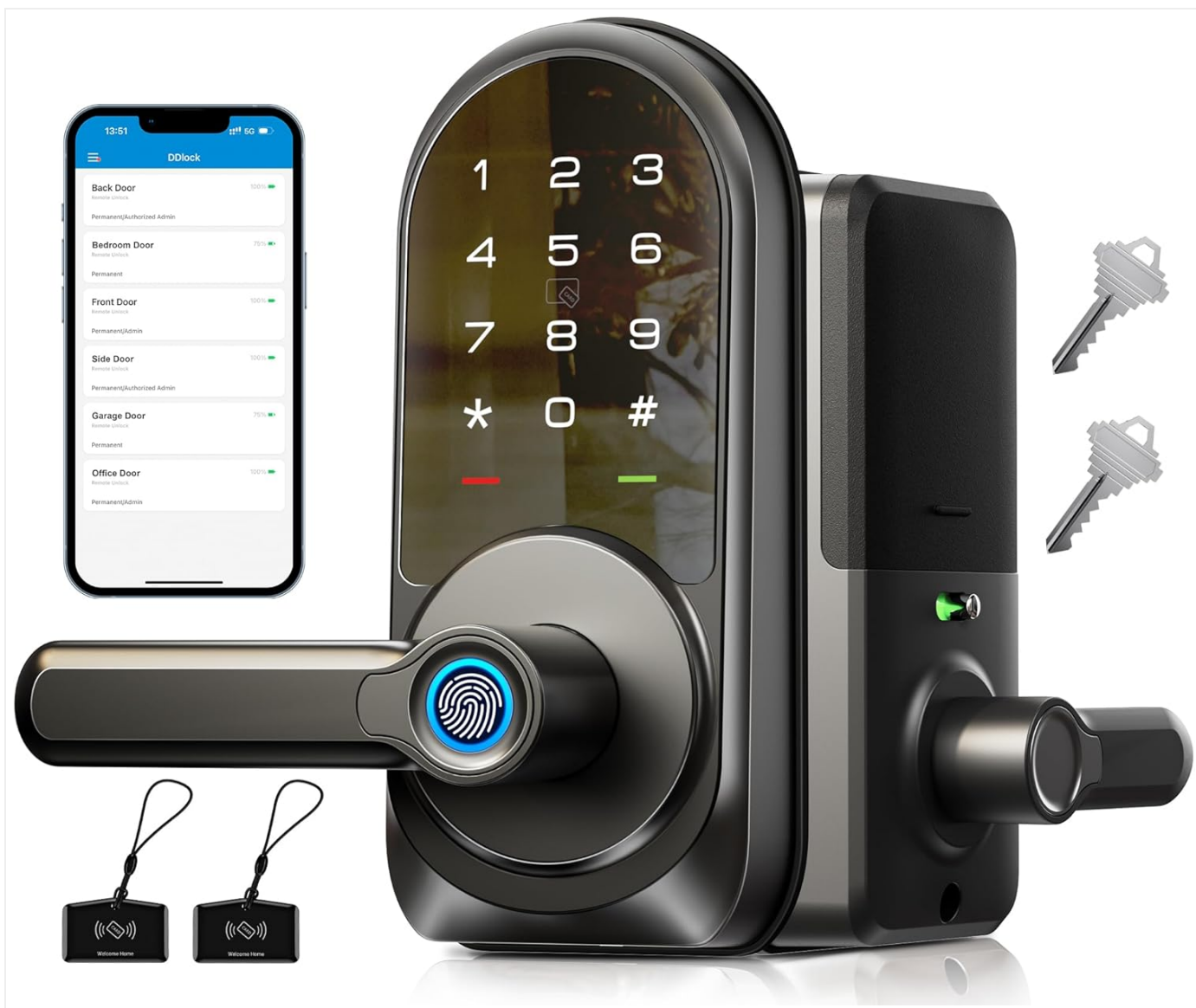
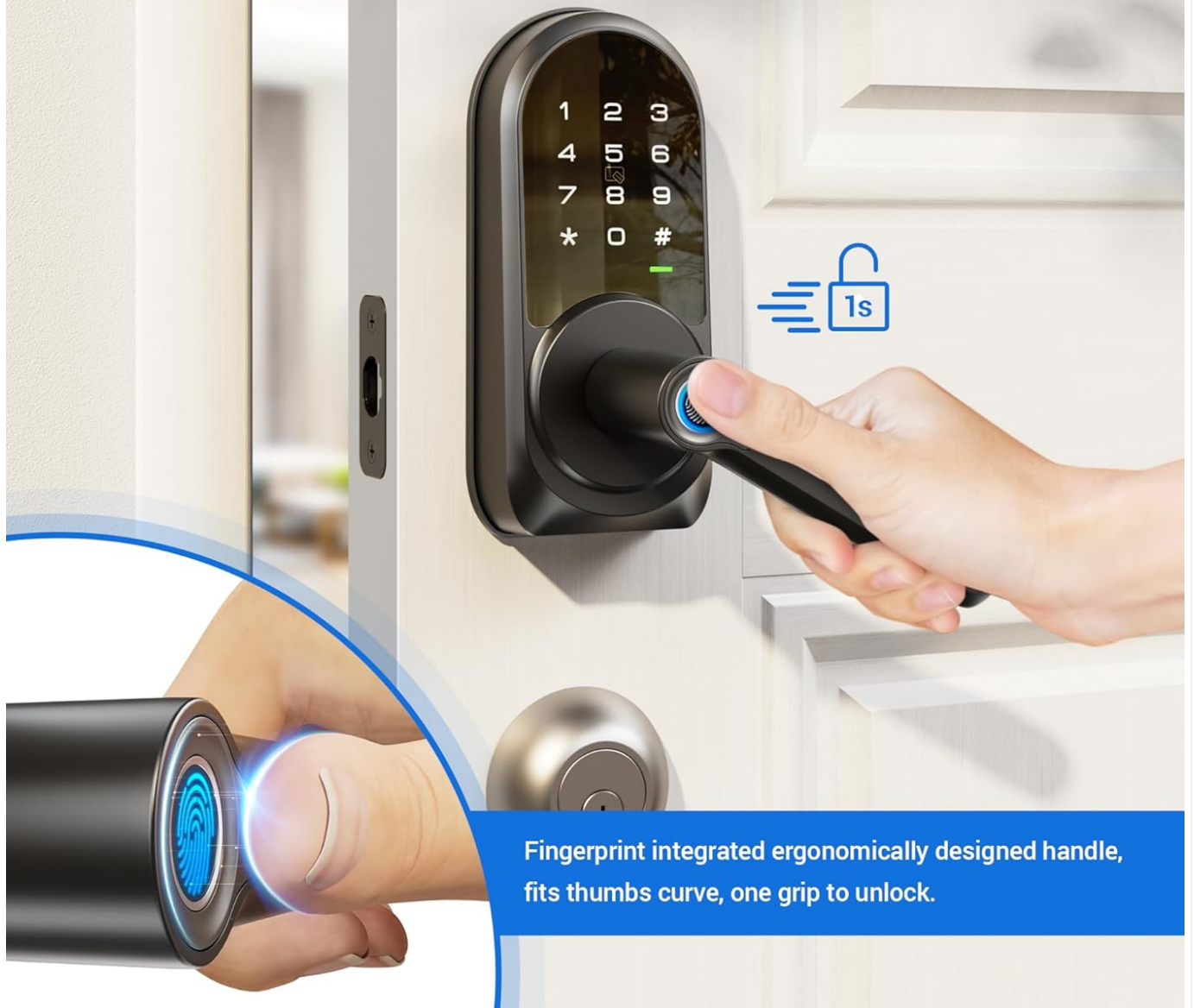


Image: Veise RZ09 Smart Lock and included accessories.

2.2 Key Features

- **7-in-1 Access Methods:** Fingerprint, Mobile App, Web Portal, Fobs, Keypad Code, eKey Sharing, Mechanical Key.
- **App Control:** Manage passwords, access logs, and eKeys via the mobile application.
- **Multiple Passwords:** Generate permanent, timed, one-time, or recurring passcodes (over 250 capacity).
- **Remote Control Capability:** Requires Veise G2 Gateway (sold separately) for remote access, real-time logging, and integration with Alexa/Google Assistant.
- **Automatic Locking:** Configurable auto-lock feature (1-999 seconds) and one-touch locking via the keypad.
- **Ergonomic Design:** Fingerprint sensor integrated into the handle for single-motion unlocking.
- **Adjustable Handle:** Compatible with both left and right-handed doors.

Unlocking and Opening Done in One Go



Fingerprint integrated ergonomically designed handle, fits thumbs curve, one grip to unlock.

Image: Unlocking the smart lock with a fingerprint.

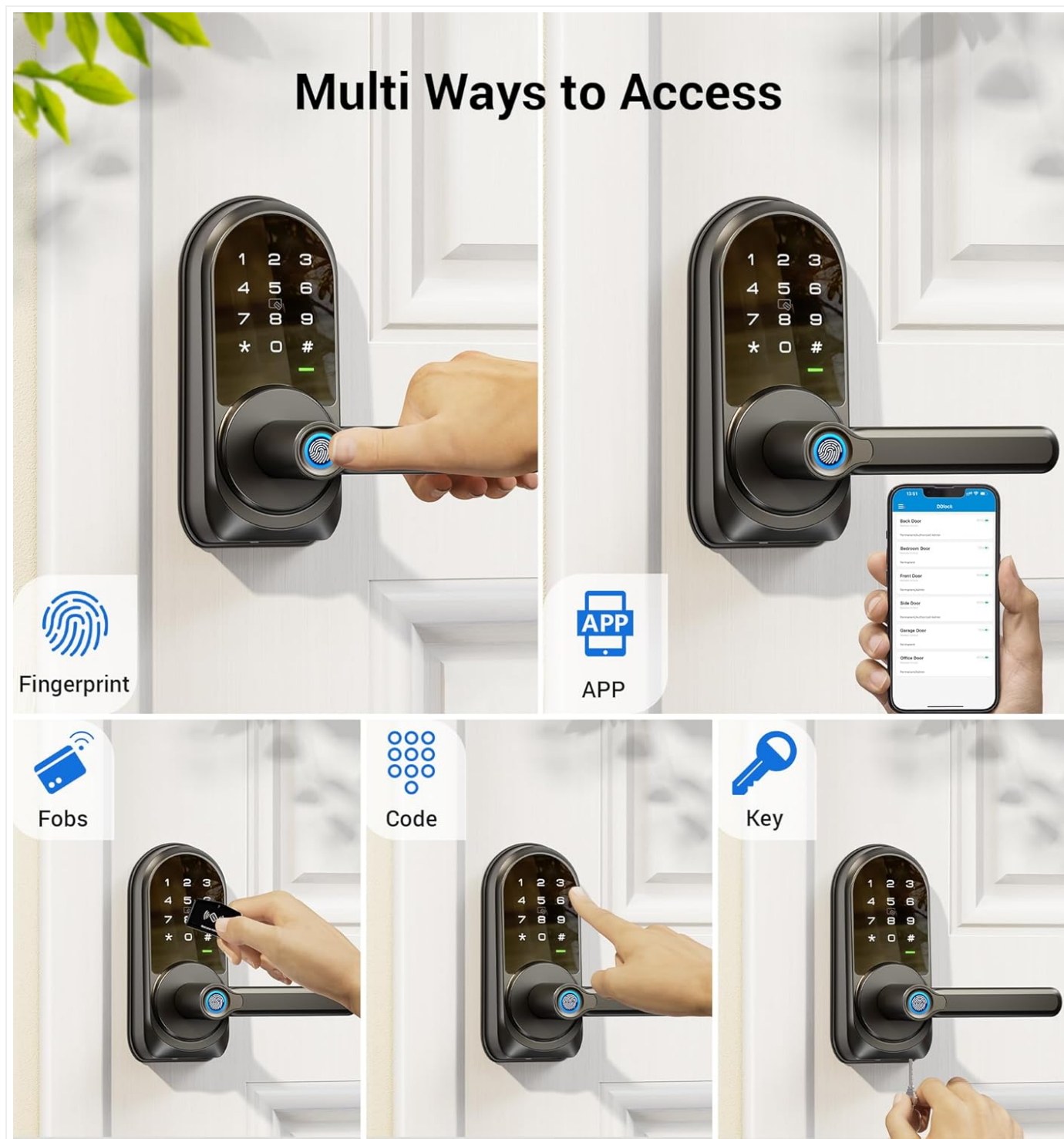


Image: Various access methods for the smart lock.

3. INSTALLATION

The Veise RZ09 Smart Lock is designed for easy installation on most US standard left and right-handed doors without requiring additional drilling. Ensure your door meets the following specifications before proceeding.

3.1 Door Compatibility Check

- **Door Thickness:** 1-3/8" to 2" (35mm-50mm)
- **Hole Diameter:** 2-1/8" (54mm)
- **Backset:** 2-3/8" or 2-3/4" (60mm or 70mm)
- **Bore Diameter:** 1" (25mm)
- **Minimum Distance (if installing above an existing deadbolt):** 1-7/8" (47mm) from the center of the passage hole

to the center of the deadbolt hole.

The lock is compatible with single cylinder deadbolts but not with mortise or integrated lock systems.

Check The Door Size Before Purchase

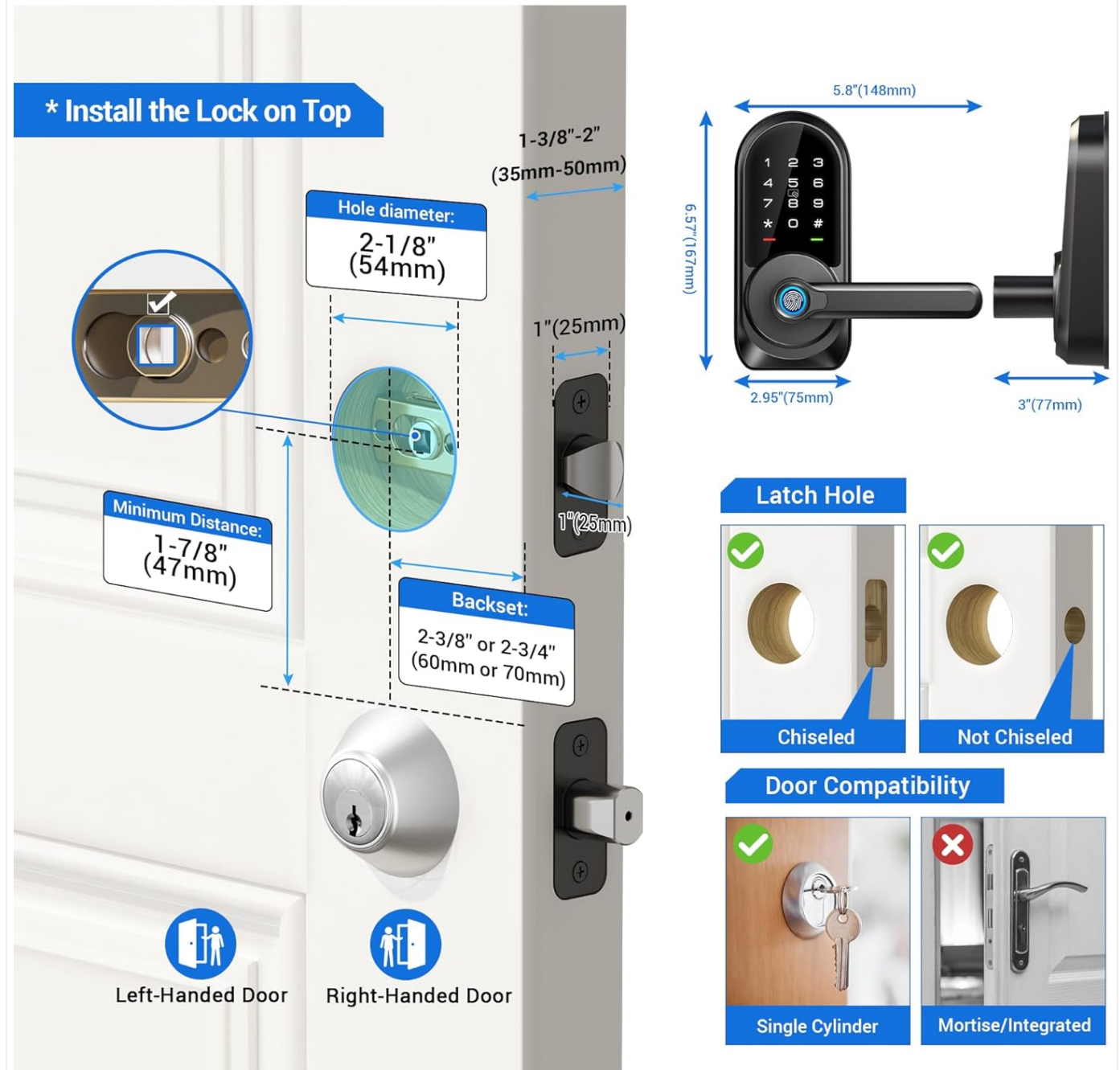


Image: Door measurement and compatibility guide.

3.2 Installation Steps

Refer to the included "Installation Instruction Manual" and "Programming Quick Setup Guide" for detailed, step-by-step instructions. A general overview of the process includes:

1. Prepare the door and frame, ensuring correct measurements and hole alignment.
2. Install the latch and strike plate.
3. Install the exterior assembly, ensuring the spindle is correctly oriented.
4. Install the interior mounting plate.
5. Connect the cable from the exterior assembly to the interior assembly.

6. Secure the interior assembly to the mounting plate.
7. Install the batteries (4 AA batteries, not included).
8. Test the lock's mechanical function.

Important: The handle direction can be adjusted for left or right-handed doors during installation. Ensure the correct orientation for optimal performance.



Image: Handle adjustment for door orientation.

4. SETUP AND PROGRAMMING

After physical installation, configure your smart lock using the mobile application.

4.1 Mobile App Installation and Pairing

1. Download the "DDLlock" or "TTLlock" app from your smartphone's app store.
2. Create an account and log in.
3. Enable Bluetooth on your smartphone and ensure you are within close proximity to the lock.
4. In the app, select "Add Lock" and follow the on-screen instructions to pair your RZ09 Smart Lock.

Auto-Lock & One-Touch Locking

The front handle can be pressed down but cannot unlock after it's locked.

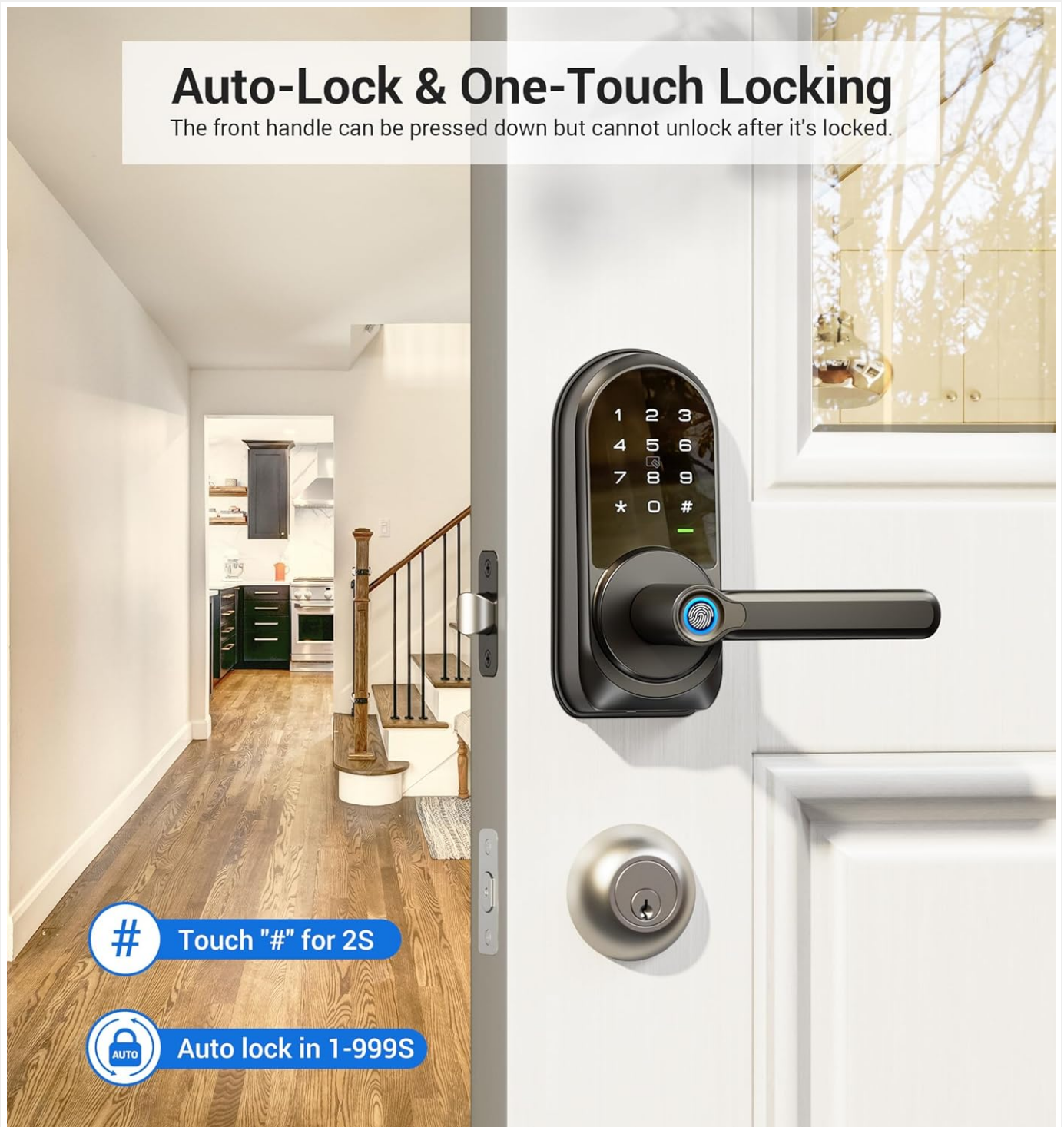


Image: DDLock app interface for lock management.

4.2 User and Access Management

The app allows you to manage various access methods:

- **Fingerprints:** Add and manage multiple fingerprints for quick access. Ensure fingers are clean and dry for optimal recognition.
- **Passcodes:** Create permanent, timed, one-time, or recurring passcodes for different users.
- **eKeys:** Share electronic keys with family, guests, or tenants for app-based access.
- **IC Cards (Fobs):** Program the included IC cards for tap-to-unlock functionality.



Image: User management in the mobile application.

4.3 Remote Access (Optional)

For remote access features, including real-time logging, remote unlocking, and voice assistant integration (Alexa, Google Assistant), the Veise G2 WiFi Gateway is required (sold separately).



Image: Veise G2 WiFi Gateway for remote functionality.

5. OPERATING INSTRUCTIONS

5.1 Unlocking the Door

- **Fingerprint:** Place a registered finger on the sensor located on the handle. The lock will unlock within approximately 1.5 seconds.
- **Keypad Code:** Enter your valid passcode on the keypad and press '#'.
- **Mobile App:** Use the unlock function within the DDLock/TTLock app (requires Bluetooth or G2 Gateway for remote).
- **IC Card (Fob):** Tap the registered IC card against the keypad.
- **Mechanical Key:** Insert the physical key into the keyhole located at the bottom of the exterior handle and turn to unlock.

5.2 Locking the Door

- **Automatic Lock:** If enabled, the lock will automatically engage after a set period (1-999 seconds) once the door is closed.

- **One-Touch Lock:** Press and hold the '#' symbol on the keypad for 2 seconds.
- **Mobile App:** Use the lock function within the DDlock/TTLock app (requires Bluetooth or G2 Gateway for remote).

Smart Web Manager

Easy to Manage Your Property with Veise Web Manager and Smart App

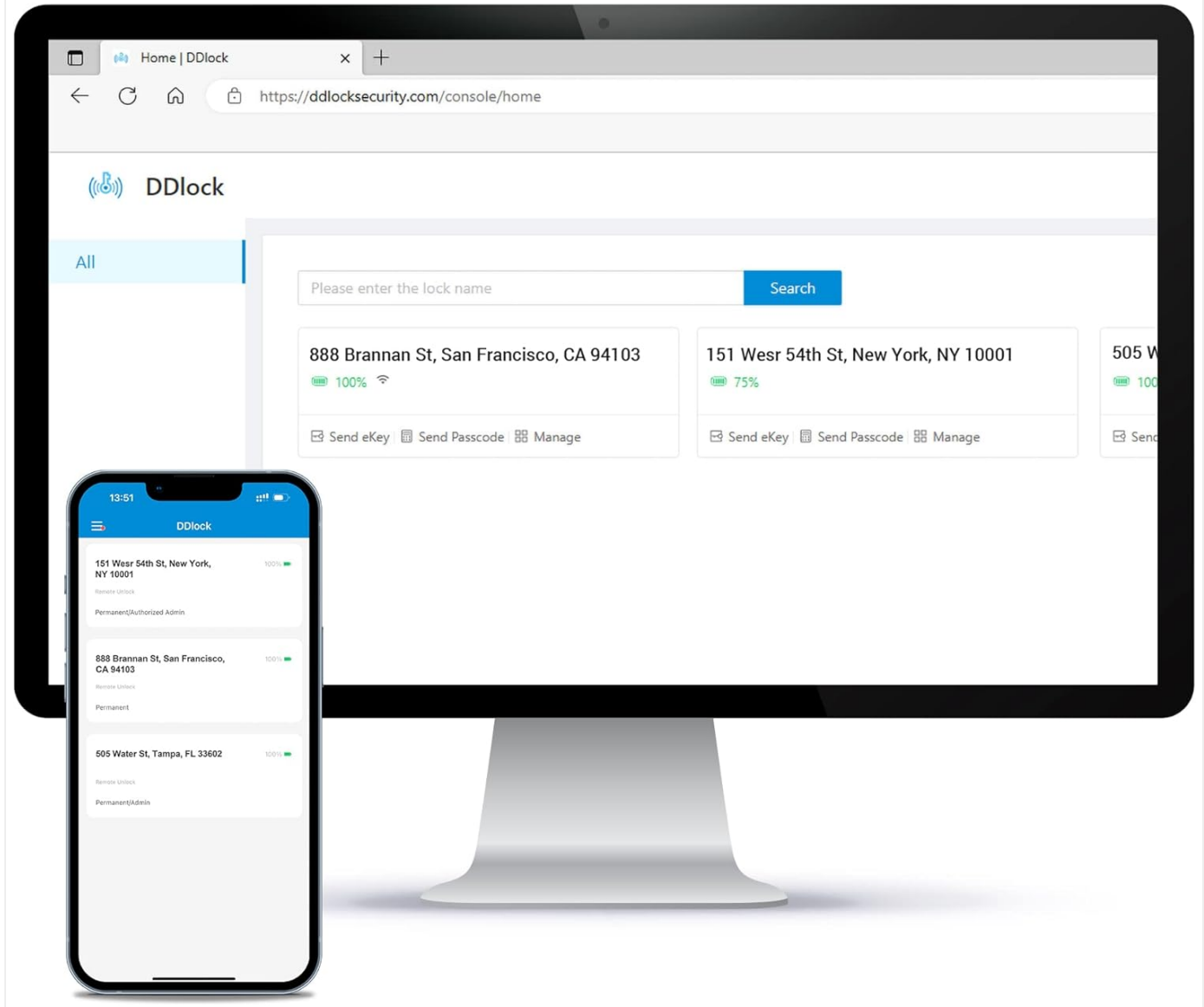


Image: Auto-lock and one-touch locking features.

5.3 Passage Mode

Passage Mode keeps the door unlocked for continuous access without requiring credentials. This is useful for periods of high traffic or when the door needs to remain open.

- **Activating Passage Mode:** This can typically be done via a switch on the interior back plate of the lock or through the mobile application.
- **Deactivating Passage Mode:** Switch it off via the back plate or the app to re-enable normal locking functions.

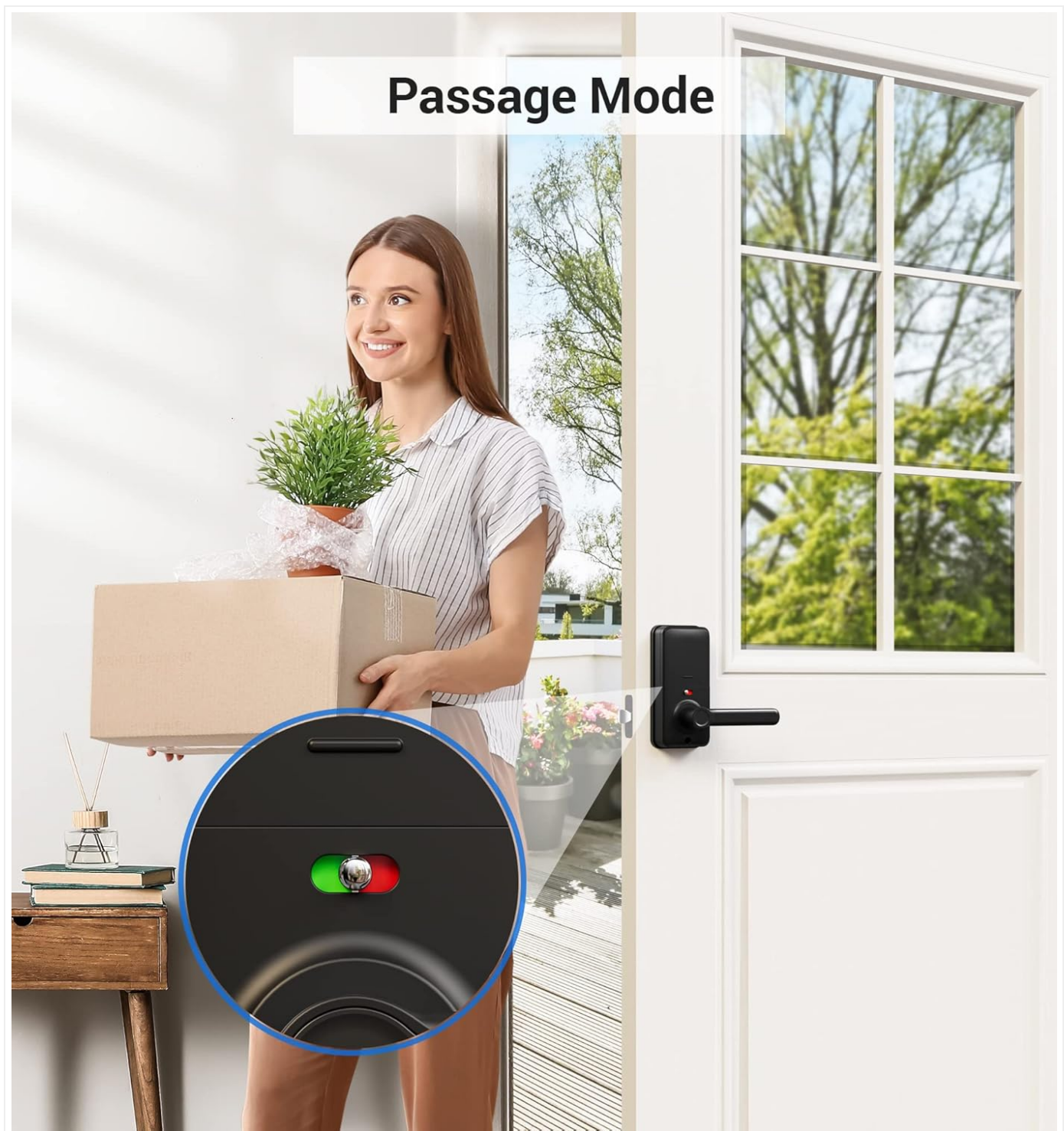


Image: Passage Mode activation switch.

6. MAINTENANCE

6.1 Battery Replacement

The Veise RZ09 Smart Lock requires 4 AA batteries (not included). The lock will provide a low battery alert when replacement is needed. Battery life is approximately up to 1 year depending on usage.

- When the battery is low, the lock will indicate this visually or audibly.
- Replace all four AA batteries simultaneously with new, high-quality alkaline batteries.
- Ensure correct polarity during installation.



Image: Low battery alert notification.

6.2 Cleaning

Clean the lock’s exterior with a soft, damp cloth. Avoid abrasive cleaners or solvents that could damage the finish or electronic components.

7. TROUBLESHOOTING

Problem	Possible Cause	Solution
Lock does not respond.	Dead batteries.	Replace all 4 AA batteries.
Fingerprint not recognized.	Finger is dirty, wet, or not properly placed.	Ensure finger is clean and dry. Reposition finger firmly on the sensor. Re-register fingerprint if issues persist.
Keypad code not working.	Incorrect code entered; keypad not active.	Ensure the keypad is illuminated before entering the code. Verify the code is correct in the app.
Lock does not pair with app.	Bluetooth off; too far from lock; app issue.	Ensure Bluetooth is on and you are close to the lock. Restart the app or phone.
Lock jams or doesn't retract latch.	Improper installation; door alignment issue.	Review installation steps, especially spindle alignment and latch operation. Check door frame for obstructions.
Remote access not working.	Veise G2 Gateway not connected or configured.	Ensure the G2 Gateway is powered on, connected to Wi-Fi, and properly paired with the lock and app.

8. SPECIFICATIONS

Feature	Detail
Brand	Veise
Model Name	RZ09
Lock Type	Biometric, Combination Lock, Keypad
Material	Aluminum, Metal
Color	Matte Black
Item Dimensions (L x W x H)	9.17 x 7.17 x 3.54 inches

Feature	Detail
Item Weight	3.78 pounds
Power Source	Battery-Powered (4 AA batteries, not included)
Connectivity Protocol	Bluetooth, Wi-Fi (with Veise G2 WiFi Gateway)
Controller Type	APP, Google Assistant, Amazon Alexa, Apple Watch, iOS, Android
Special Features	Auto-lock & One Touch Locking, User Friendly App, Compatible with Alexa and Google Assistant (Veise G2 WiFi Gateway Required), Fingerprint Smart Lock with Handle, Web Portal User Management, App Control & Ekeys
Installation Method	Screw-In
Usage	Front Door, Back Door, Home, House, Hotel, Apartment, Office, Rental, etc.

9. WARRANTY AND SUPPORT

Veise offers a minimum of a 1-year product warranty. For technical assistance or warranty claims, please contact Veise customer support.

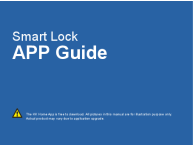


- **Online Phone Support:** Monday to Friday, 9 AM to 5 PM PST.
- **Email Service:** 24/7 after-sales email support.


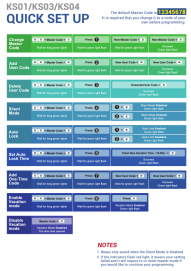
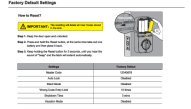
Refer to the official Veise website or your purchase documentation for the most current contact information.



© 2023 Veise. All rights reserved.

Related Documents - RZ09

	KK Home Smart Lock APP Guide: Setup, Features, and Usage A comprehensive guide to the KK Home Smart Lock mobile application, detailing user registration, device pairing, password management (permanent, scheduled, temporary, one-time), fingerprint setup, auto-lock functionality, away mode, emergency PIN key, one-touch locking, private mode, and sharing access. Includes information on the Veise Gateway G1 and its integrations.
	Veise VE017 Smart Lock Installation Manual Comprehensive installation manual for the Veise VE017 smart door lock, covering preparation, installation steps, reset procedures, troubleshooting, and safety warnings.
	Veise VE017 Smart Lock User Manual - Setup, App Guide, and Programming Comprehensive user manual for the Veise VE017 smart lock. Covers installation, app setup (KK Home), pairing, unlocking/locking procedures, programming guide, definitions, and FAQs. Learn to use fingerprint, keypad, user cards, and app features.

	<p>Veise RZ07 Smart Lock Installation and User Guide</p> <p>Comprehensive guide for installing and using the Veise RZ07 Smart Lock, featuring keyless entry, app control, and fingerprint access. Includes step-by-step instructions, definitions, and programming details.</p>
	<p>Veise KS01/KS03/KS04 Keyless Entry Door Lock Quick Setup Guide</p> <p>A concise guide to setting up and programming your Veise KS01, KS03, or KS04 keyless entry door lock, including master code changes, user code management, silent mode, auto-lock, and vacation mode.</p>
	<p>Factory Default Settings and Reset Procedure for VS02 Door Lock</p> <p>This document outlines the factory default settings for the VS02 door lock and provides a step-by-step guide on how to perform a factory reset, including important warnings and a table of default configurations.</p>

Documents - Veise – RZ09

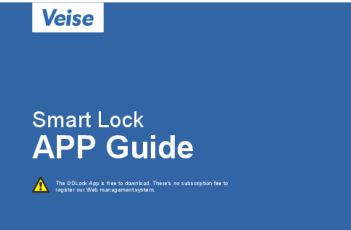


[\[pdf\]](#) User Manual Installation Guide Dimension Guide Guide

RZ09 Installation Instruction Manual Veise Smart Lock Keyless Entry Door with Handle Fingerprint 7 in 1 Locks for Front Electronic Digital Keypad APP Control Set Satin Nickel B1VNkH6TZtL m media amazon images I |||

RZ09 Smart Lock User Guide / Installation Instruction Thank you for purchasing our products. Please review this manual thoroughly before operating your device. All pictures in this manual are for illustration purpose only. Actual product may vary due to product upgrade. User Guide P 1 At a Glanc...

lang:en score:35 filesize: 2.39 M page_count: 19 document date: 2023-09-18



[Veise Smart Lock APP Guide: Setup, Features, and Management](#)

A comprehensive user guide for the Veise DDLock App, detailing smart lock setup, pairing, user management (passcodes, eKeys, cards, fingerprints), remote access via the web system, and troubleshooting tips.

lang:en score:26 filesize: 478.83 K page_count: 20 document date: 2024-02-07