

[Manuals.plus](#) /

> [YUNZII](#) /

> YUNZII X75 PRO 82 Key Wireless Mechanical Gaming Keyboard User Manual

YUNZII X75 PRO

YUNZII X75 PRO 82 Key Wireless Mechanical Gaming Keyboard User Manual

Model: X75 PRO

1. INTRODUCTION

This manual provides detailed instructions for the setup, operation, and maintenance of your YUNZII X75 PRO 82 Key Wireless Mechanical Gaming Keyboard. Please read this manual thoroughly to ensure proper use and to maximize your keyboard's functionality.



Image 1.1: YUNZII X75 PRO 82 Key Wireless Mechanical Gaming Keyboard.

2. PACKAGE CONTENTS

Verify that all items are present in the package:

- YUNZII X75 PRO Mechanical Keyboard
- USB-C to USB-A Cable

- 2.4G Wireless Receiver (USB Dongle)
- Keycap Puller
- Switch Puller
- User Manual (this document)



Image 2.1: Package contents of the YUNZII X75 PRO keyboard.

3. PRODUCT OVERVIEW

The YUNZII X75 PRO is an 82-key mechanical keyboard featuring a transparent design, gasket mount structure, and tri-mode connectivity. It is designed for compatibility with various operating systems and devices.

Key Features:

- **Tri-Mode Connectivity:** Supports Bluetooth 5.0, 2.4G wireless, and USB-C wired connections.
- **Gasket Mount Design:** Incorporates silicone gaskets, sandwich silicone sound dampeners, and a bottom silicone pad for enhanced typing feel and sound.
- **Transparent Aesthetic:** Features a high-quality transparent polycarbonate case, clear keycaps, and transparent

switches.

- **Hot-Swappable PCB:** Allows for easy replacement of 3-pin or 5-pin mechanical switches without soldering.
- **RGB Backlighting:** Offers multiple pre-set lighting effects and software customization options.
- **4000mAh Battery:** Provides extended usage in wireless modes.

X75 PRO TRANSPARENT GASKET MECHANICAL KEYBOARD



RGB
Backlight



Gasket
Structure



Custom
Switch



Custom
Stabilizers



Transparent
PC Case



Clear Keycaps



Double Layer
Sound
Absorbing
Foam



Hot Swap

Image 3.1: Transparent design of the YUNZII X75 PRO.



Image 3.2: Detailed view of the gasket structure.



Image 3.3: High-quality transparent PC keycaps.

4. SETUP

The YUNZII X75 PRO supports three connection modes: wired, 2.4G wireless, and Bluetooth. Select the appropriate mode for your device.

4.1. Wired Connection (USB-C)

1. Locate the USB-C port on the keyboard.
2. Connect the provided USB-C cable to the keyboard and the other end to your computer's USB port.
3. The keyboard will automatically be recognized and ready for use.

4.2. 2.4G Wireless Connection

1. Locate the 2.4G wireless receiver (USB dongle) in the package.
2. Insert the 2.4G receiver into an available USB port on your computer.
3. On the keyboard, switch the mode selector to the 2.4G position (often indicated by a wireless icon).
4. Press **Fn** + **R** to activate 2.4G pairing mode. The indicator light will blink.
5. The keyboard should connect automatically.

4.3. Bluetooth Connection

The keyboard supports up to three Bluetooth devices.

1. On the keyboard, switch the mode selector to the Bluetooth position (often indicated by a Bluetooth icon).
2. Press and hold **Fn** + **Q**, **W**, or **E** for 3-5 seconds to enter pairing mode for the selected channel. The indicator light will blink rapidly.
3. On your device (computer, tablet, smartphone), enable Bluetooth and search for new devices.
4. Select "YUNZII X75 PRO" from the list of available devices to pair.
5. Once connected, the indicator light will stop blinking.
6. To switch between paired Bluetooth devices, short press **Fn** + **Q**, **W**, or **E**.



Image 4.1: Tri-mode connection options.

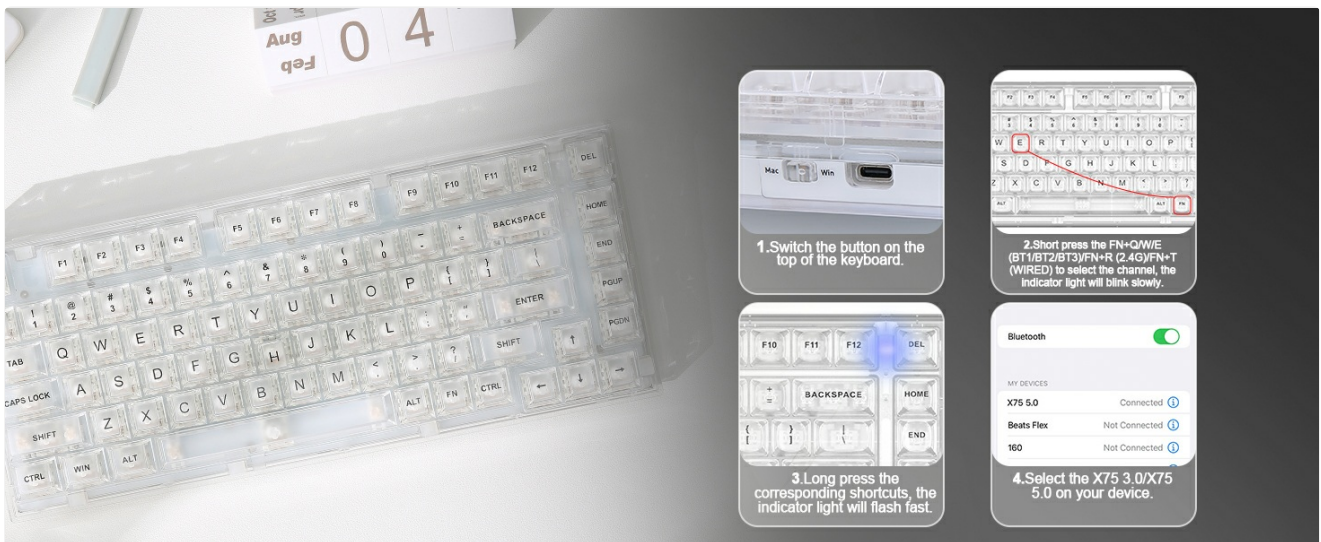


Image 4.2: Bluetooth connection instructions.

5. OPERATING INSTRUCTIONS

5.1. RGB Backlight Control

- **Turn On/Off RGB:** Press **Fn** + **Backspace**.
- **Switch Colors:** Press **Fn** + **Del**.
- **Switch Light Modes:** Press **Fn** + **⌵**.



Image 5.1: RGB backlight effects.



Image 5.2: RGB control key combinations.

5.2. Software Customization

Dedicated software is available for Windows users to customize key assignments, create macros, and design personalized lighting effects. Refer to the official YUNZII website for software download and detailed instructions.

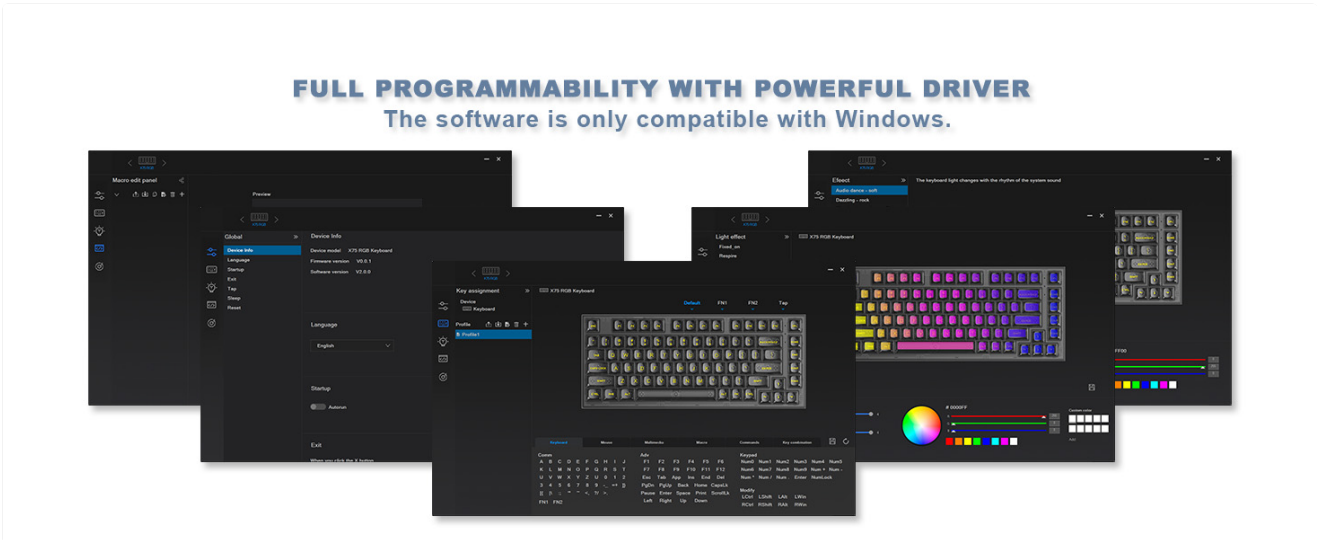


Image 5.3: Software customization interface.

5.3. Battery Status Check

To check the current battery capacity, press **Fn** + **Space**.

5.4. Hot-Swapping Switches

The X75 PRO features a hot-swappable PCB, allowing you to change mechanical switches without soldering.

1. **Remove Keycap:** Use the provided keycap puller to gently remove the desired keycap.
2. **Remove Switch:** Use the provided switch puller to carefully grip the top and bottom clips of the switch and pull it straight up.
3. **Install New Switch:** Align the pins of the new switch with the holes on the PCB. Gently press the switch down until it clicks into place. Ensure the pins are not bent.
4. **Reinstall Keycap:** Place the keycap back onto the new switch stem.



Image 5.4: Hot-swappable switch replacement process.

6. MAINTENANCE

Regular maintenance helps prolong the life and performance of your keyboard.

6.1. Cleaning the Keyboard

- Disconnect the keyboard from your device before cleaning.
- Use a can of compressed air to remove dust and debris from between the keycaps.
- For surface cleaning, use a soft, lint-free cloth lightly dampened with water or a mild cleaning solution. Avoid harsh chemicals.
- To clean keycaps, remove them using the keycap puller and wash them with mild soap and water. Ensure they are completely dry before reattaching.

6.2. Battery Care

- Avoid fully discharging the battery frequently.
- Store the keyboard in a cool, dry place if not used for extended periods.
- Use only the provided USB-C cable for charging.

7. TROUBLESHOOTING

If you encounter issues with your YUNZII X75 PRO keyboard, refer to the following common solutions:

- **Keyboard Not Responding:**

- Ensure the keyboard is charged.
- Check the connection mode switch (wired, 2.4G, Bluetooth) is set correctly.
- For wireless connections, ensure the receiver is properly inserted or Bluetooth is paired.
- Try connecting via USB-C cable to rule out wireless issues.

- **Keys Not Registering:**

- If a specific key is not working, try hot-swapping the switch with a known working one to determine if the switch or PCB is at fault.
- Ensure keycaps are properly seated.

- **RGB Backlight Not Working:**

- Ensure RGB is turned on using **Fn** + **Backspace**.
- Check software settings if custom lighting profiles are used.

- **Wireless Lag/Disconnection:**

- Ensure the keyboard is within range of the receiver/device.
- Minimize interference from other wireless devices.
- Re-pair the device (2.4G or Bluetooth).

8. SPECIFICATIONS

Model Number	X75 PRO
Product Dimensions	12.8 x 7.87 x 1.85 inches
Item Weight	2.2 pounds

Connectivity Technology	Wireless (Bluetooth 5.0, 2.4G), Wired (USB-C)
Compatible Devices	Laptop, Mac, PC, Smartphone, Tablet
Keyboard Description	Hot Swappable Gasket Mechanical Keyboard
Special Feature	Backlit (RGB)
Battery	1 Lithium Metal battery (included), 4000mAh capacity
Keycap Material	High-Quality Transparent PC Material
Switch Type	Kailh Jellyfish Switch (or other specified variant)

ULTRA-LONG ENDURANCE BATTERY

Battery 4000mAh

15-20 Days
No RGB

Long Standby

5 Days
With RGB

Image 8.1: Battery capacity and estimated endurance.



Image 8.2: Ergonomic features including adjustable typing angle.

9. WARRANTY AND SUPPORT

For warranty information, technical support, or service inquiries, please contact YUNZII customer support through their official website or the retailer where the product was purchased. Keep your proof of purchase for warranty claims.