

FORIOUS FRKF43BN

FORIOUS FRKF43BN Kitchen Faucet User Manual

Model: FRKF43BN

1. INTRODUCTION

Thank you for choosing the FORIOUS FRKF43BN Kitchen Faucet. This manual provides essential information for the safe installation, operation, and maintenance of your new faucet. Please read these instructions thoroughly before beginning installation and retain them for future reference.

2. SAFETY INFORMATION

- Always turn off the main water supply before installing or performing any maintenance on the faucet.
- Wear appropriate personal protective equipment, such as safety glasses and gloves, during installation.
- Ensure all connections are secure to prevent leaks. Do not overtighten.
- If you are unsure about any part of the installation process, consult a qualified plumber.
- Keep children away from the installation area.

3. PACKAGE CONTENTS

Verify that all components are present before beginning installation:

- FORIOUS FRKF43BN Kitchen Faucet Assembly
- Flexible Hoses (Hot & Cold)
- Quick Connectors
- Mounting Hardware
- Instruction Manual

4. SPECIFICATIONS

Feature	Specification
Model Number	FRKF43BN
Material	Stainless Steel
Finish	Stainless Steel
Installation Method	Single Hole (Deck Mounted)
Flow Rate	1.5 Gallons Per Minute (GPM)
Spout Swivel	360°
Sprayer Type	Pull-Down, Dual Function (Stream/Spray)
Hose Length (Pull-Down)	Approximately 17 inches (45 cm)
Overall Dimensions (L x W x H)	25 x 5 x 42.5 cm
Spout Height	23.5 cm
Spout Reach	24.5 cm

For detailed dimensions, refer to the diagram below:

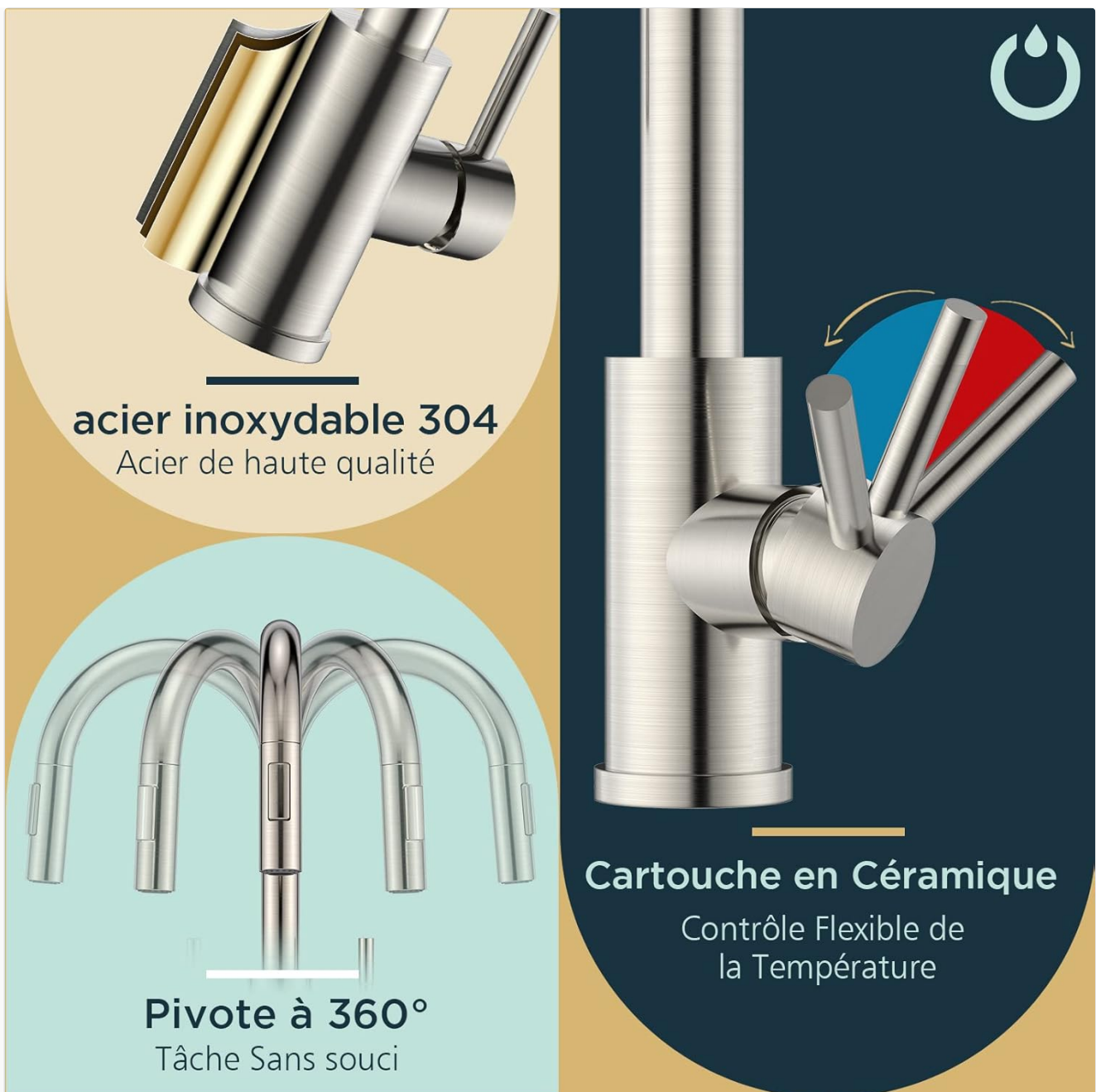


Figure 1: Faucet Dimensions. This diagram illustrates the key measurements of the faucet, including the spout height of 23.5 cm, spout reach of 24.5 cm, and the G 3/8 hose connections.

5. INSTALLATION

The FORIOUS FRKF43BN faucet is designed for straightforward DIY installation using flexible hoses and quick connectors.

5.1 Pre-Installation Steps

1. Turn off the main water supply to your kitchen.
2. Remove your old faucet, if applicable. Clean the mounting surface thoroughly.
3. Ensure the mounting hole on your sink or countertop is compatible with a single-hole faucet.

5.2 Faucet Installation

1. Insert the faucet body into the mounting hole. Ensure the base plate is correctly positioned.
2. From underneath the sink, secure the faucet using the provided mounting hardware. Hand-tighten first, then

use a wrench to snug it firmly, but do not overtighten.

3. Connect the hot and cold water supply lines to the corresponding inlets on the faucet using the quick connectors. Ensure a secure, leak-free connection.
4. Attach the pull-down sprayer hose to the faucet's main hose connection.
5. Install the weight onto the pull-down sprayer hose, typically below the sink, to ensure smooth retraction.

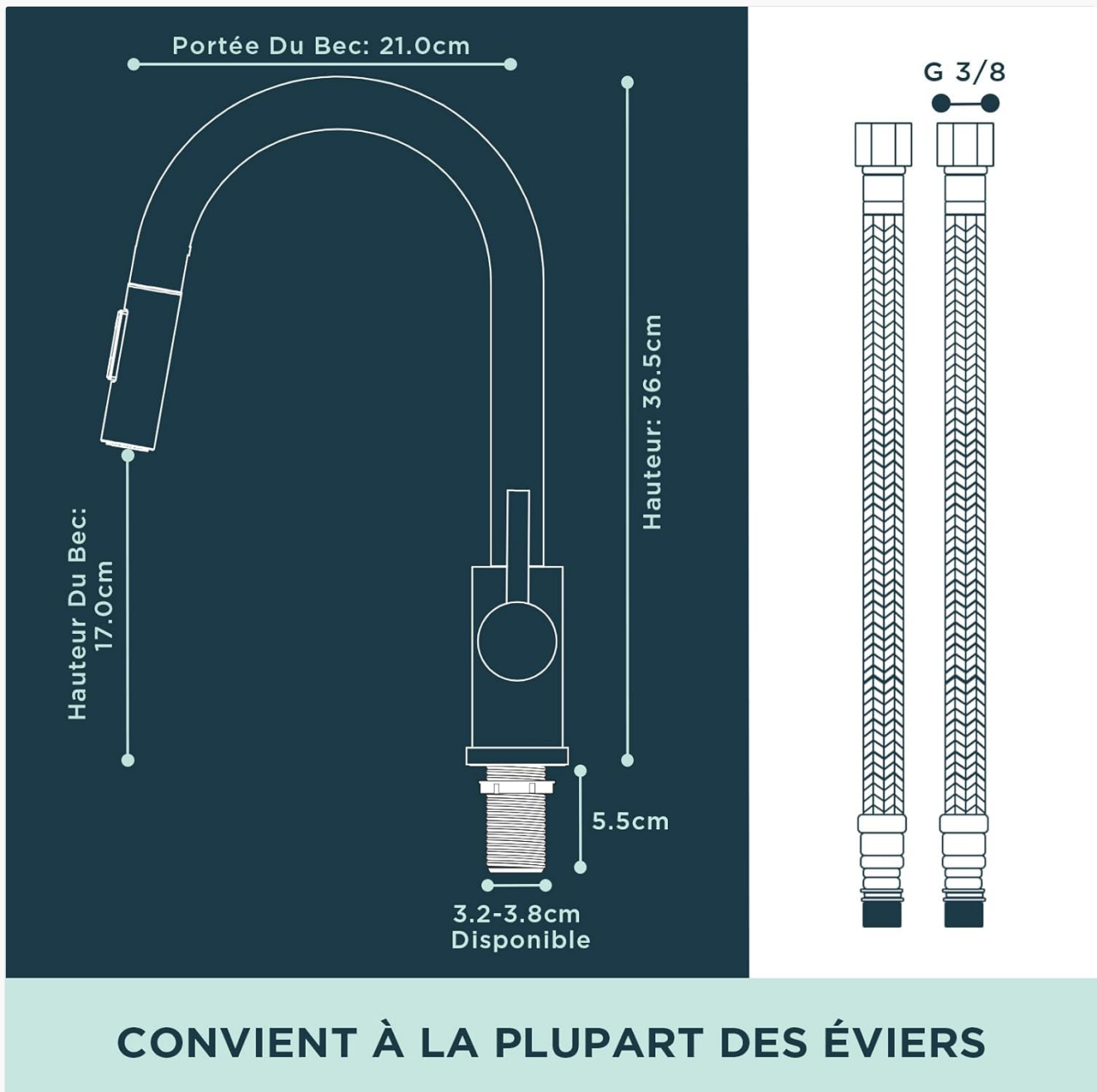


Figure 2: Quick Installation Steps. This image demonstrates the use of quick connectors for water lines and the secure mounting system for the faucet base.

5.3 Post-Installation

1. Slowly turn on the main water supply.
2. Check all connections for leaks. If leaks occur, tighten the connections slightly.
3. Run water through the faucet for a few minutes to flush out any debris from the water lines.

6. OPERATION

The FORIOUS FRKF43BN kitchen faucet offers convenient control and versatile functionality.

6.1 Water Flow and Temperature Control

The single lever handle controls both water flow and temperature:

- **To turn on/off:** Lift the handle up to turn on the water and push it down to turn it off.
- **To adjust temperature:** Move the handle to the left for hot water and to the right for cold water.
- **To adjust flow:** Lift the handle higher for increased water flow.

6.2 Pull-Down Sprayer Functionality

The pull-down sprayer extends for increased reach and offers two spray modes:



Figure 3: Extended Pull-Down Sprayer. The sprayer hose extends approximately 17 inches (45 cm) for flexible use.

- **To extend:** Gently pull the sprayer head downwards from the spout. The flexible hose allows for easy maneuverability.
- **To retract:** Release the sprayer head, and the hose weight will automatically retract it back into the spout.

6.3 Dual Spray Modes

Switch between two distinct water patterns directly on the sprayer head:



Figure 4: Dual Spray Modes. The faucet provides both an aerated stream for filling and a powerful spray for rinsing, with a flow rate of 1.5 GPM.

- **Aerated Stream:** Ideal for filling pots and general washing.
- **Powerful Spray:** Suitable for rinsing dishes and cleaning the sink. Press the button on the sprayer head to toggle between modes.



Figure 5: Practical Applications. The powerful spray facilitates quick cleaning, while the aerated stream allows for rapid filling of containers.

6.4 360° Swivel Spout

The faucet spout can rotate 360 degrees, providing full sink access and flexibility for various kitchen tasks.



Figure 6: 360° Swivel and Ceramic Cartridge. The faucet's spout pivots fully for convenience, and its ceramic cartridge ensures reliable, drip-free operation.

7. MAINTENANCE

Proper care and maintenance will ensure the longevity and optimal performance of your FORIOUS FRKF43BN kitchen faucet.

7.1 Cleaning the Faucet

- Clean the faucet regularly with a soft cloth and mild soap or a non-abrasive cleaner specifically designed for stainless steel finishes.
- Avoid using abrasive cleaners, harsh chemicals, or scouring pads, as these can damage the finish.
- Rinse thoroughly with clean water after cleaning and dry with a soft cloth to prevent water spots.

7.2 Aerator Maintenance

If water flow decreases, the aerator may be clogged with debris. To clean:

1. Unscrew the aerator from the tip of the sprayer head.
2. Rinse the aerator under running water to remove any particles.
3. Reassemble the aerator.

7.3 Durable Construction

The faucet features lead-free stainless steel construction and a high-quality ceramic cartridge, designed for drip-free performance and durability.

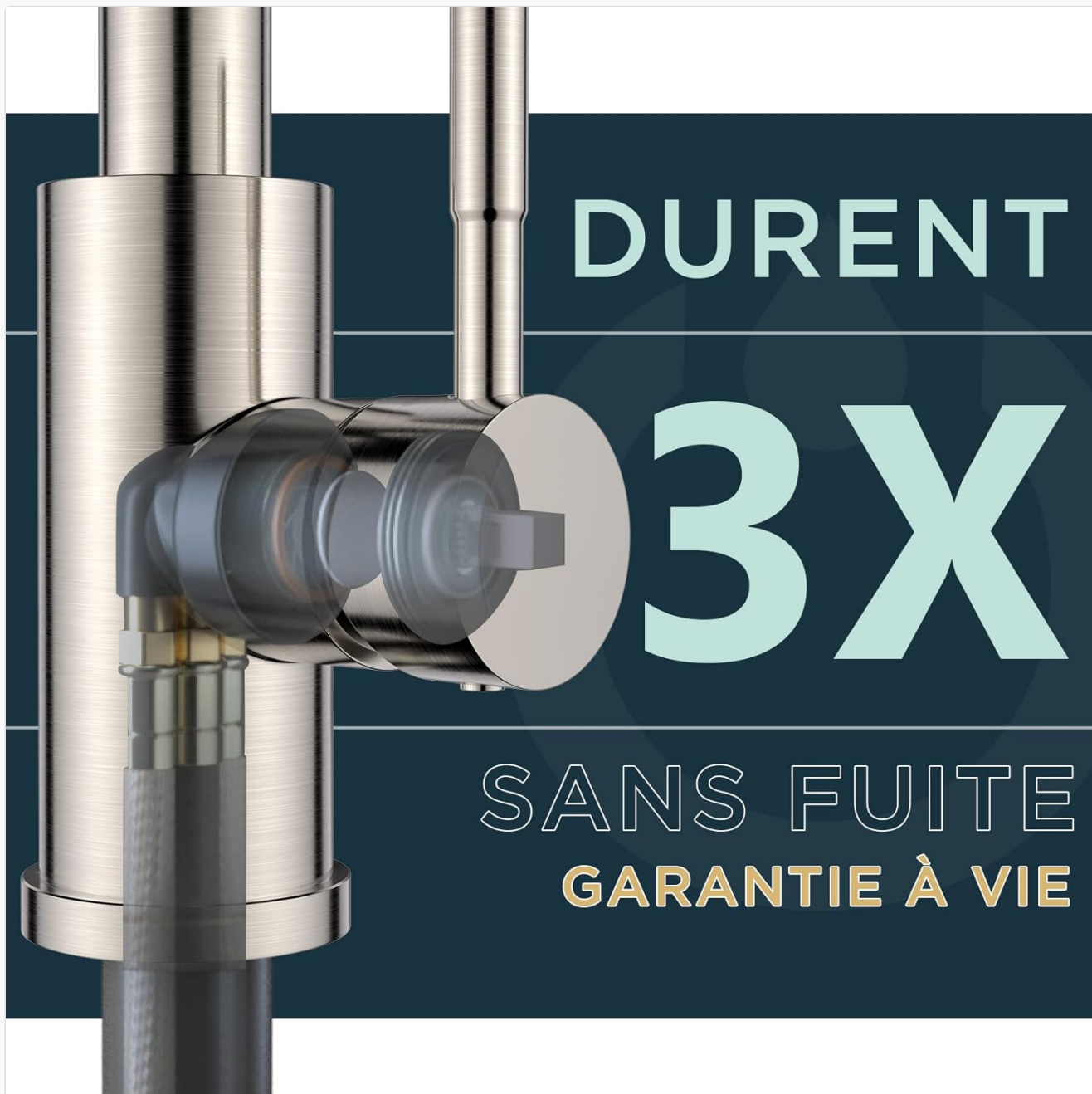


Figure 7: PEX Food-Grade Hose. The internal PEX hose ensures water quality and durability.

8. TROUBLESHOOTING

This section addresses common issues you might encounter with your faucet.

Problem	Possible Cause	Solution
---------	----------------	----------

Low Water Flow	Clogged aerator; partially closed shut-off valves; debris in supply lines.	Clean the aerator (see Section 7.2); ensure shut-off valves are fully open; flush supply lines.
Leaks at Connections	Loose connections; damaged O-rings or washers.	Tighten connections (do not overtighten); inspect and replace O-rings or washers if damaged.
Faucet Drips	Worn ceramic cartridge.	Contact customer support for a replacement ceramic cartridge.
Sprayer Does Not Retract Fully	Hose weight improperly positioned or obstructed.	Adjust the position of the hose weight; ensure no obstructions under the sink.

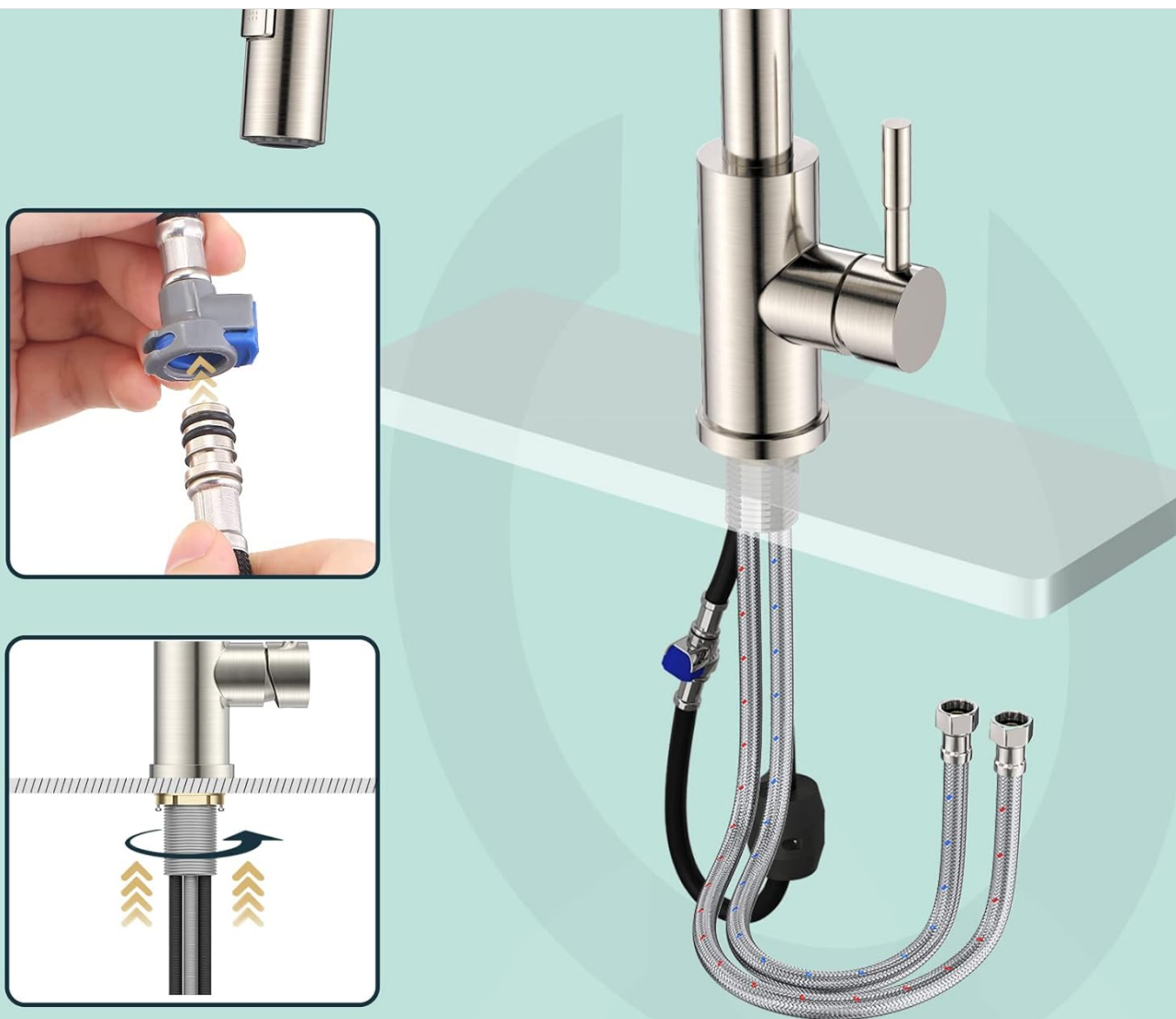
If you encounter an issue not listed here or if the suggested solutions do not resolve the problem, please contact FORIOUS customer support.

9. WARRANTY AND SUPPORT

FORIOUS is committed to providing high-quality products and excellent customer service.

9.1 Warranty Information

This FORIOUS faucet is backed by a **Lifetime Limited Warranty**, ensuring it is free from defects in material and workmanship under normal use. The ceramic cartridge is designed for a long, leak-free life.



S'INSTALLE EN QUELQUES SECONDES

Figure 8: Durability and Warranty. The faucet is engineered for long-lasting, leak-free performance, supported by a lifetime warranty.

For specific warranty details and conditions, please refer to the warranty card included with your product or visit the official FORIOUS website.

9.2 Customer Support

Should you require assistance with installation, troubleshooting, or warranty claims, FORIOUS offers professional 24-hour online after-sales service.

- **Online Support:** Visit the [FORIOUS Brand Store on Amazon](#) for FAQs and contact options.
- **Email Support:** Refer to your product packaging or the FORIOUS website for direct email contact information.

