

Amazon Echo Show 8 (3rd Gen)

Amazon Echo Show 8 (3rd Gen) User Manual

Model: Echo Show 8 (3rd Gen) - 2023 Release

1. INTRODUCTION

The Amazon Echo Show 8 (3rd Gen) is a smart display designed to enhance your daily life with immersive entertainment, crisp video calling, and a connected smart home experience. Featuring spatial audio and an 8-inch HD touchscreen, it brings content to life and simplifies device control.

This manual provides essential information for setting up, operating, maintaining, and troubleshooting your Echo Show 8, ensuring you get the most out of its advanced features.

echo show 8

With HD display and
room-filling spatial audio



amazon music

Spotify

Apple Music

prime video

NETFLIX

fire tv | channels

Figure 1.1: The Amazon Echo Show 8 (3rd Gen) device, showcasing its HD display and spatial audio capabilities for music playback.

2. SETUP

2.1 Unboxing and Initial Connection

Your Echo Show 8 comes ready to connect to your WiFi network. Inside the box, you will find the Echo Show 8 device, a power adapter (30W), and a quick start guide.

- Connect the power adapter to the Echo Show 8 and plug it into a wall outlet.
- The device will power on automatically.
- Follow the on-screen instructions to select your language and connect to your Wi-Fi network.

2.2 System Requirements and App Compatibility

To fully utilize your Echo Show 8, the Alexa app is required for setup and managing certain features. The Alexa app is compatible with Fire OS, Android, and iOS devices and can also be accessed via your web browser.

- Ensure your mobile device meets the operating system requirements for the Alexa app.
- Download the Alexa app from your device's app store or visit the Alexa website.
- Log in with your Amazon account or create a new one.

2.3 Amazon WiFi Simple Setup

Amazon WiFi simple setup allows for easy connection of smart devices to your WiFi network. If you have previously saved your WiFi credentials with Amazon, your Echo Show 8 may automatically connect during setup.

3. OPERATING YOUR ECHO SHOW 8

3.1 Voice Control with Alexa

The Echo Show 8 is primarily controlled using voice commands with Alexa. Simply say the wake word "Alexa" followed by your command or question.

- **General Commands:** "Alexa, what's the weather?", "Alexa, set a timer for 10 minutes."
- **Music & Entertainment:** "Alexa, play pop music," "Alexa, open Prime Video."
- **Smart Home Control:** "Alexa, turn on the living room lights," "Alexa, show me the front door camera."



Figure 3.1: The Echo Show 8 displaying a music playlist, demonstrating its capability for audio and visual entertainment.

3.2 Display and Touchscreen Interaction

The 8.0-inch HD touchscreen allows for visual interaction and control. You can tap, swipe, and navigate menus directly on the screen.

- **Home Screen:** Displays time, weather, and rotating content. Adaptive Content adjusts information based on your

proximity.

- **Widgets:** Shortcut icons on the home screen provide quick access to frequently used features.
- **Settings:** Swipe down from the top of the screen to access quick settings and the full settings menu.



"Alexa, open Prime Video"
Stand sold separately

Figure 3.2: The Echo Show 8 displaying video content, highlighting its HD display for visual media.

3.3 Smart Home Hub Functionality

The Echo Show 8 includes a built-in smart home hub supporting Zigbee, Matter, and Thread Border Router protocols. This allows you to pair and control compatible smart devices directly.

- **Device Pairing:** Say "Alexa, discover devices" or use the Smart Home section in the Alexa app.
- **Control:** Manage cameras, lights, thermostats, and more using voice commands or the display.
- **Routines:** Create automated routines based on time, motion, or other triggers.



Seamlessly pair and manage compatible smart home devices

Figure 3.3: The Echo Show 8's smart home interface, showing control options for connected devices.

3.4 Communication and Camera Features

The 13 MP centered camera enables high-quality video calls and other visual interactions.

- **Video Calling:** Make hands-free video calls using voice commands or the Top Connections widget. The camera features auto-framing and noise reduction.
- **Amazon Photos:** Turn your home screen into a digital photo frame. Adaptive color ensures photos look great in any light.
- **Privacy:** Utilize the built-in camera shutter and microphone/camera off button for privacy control.

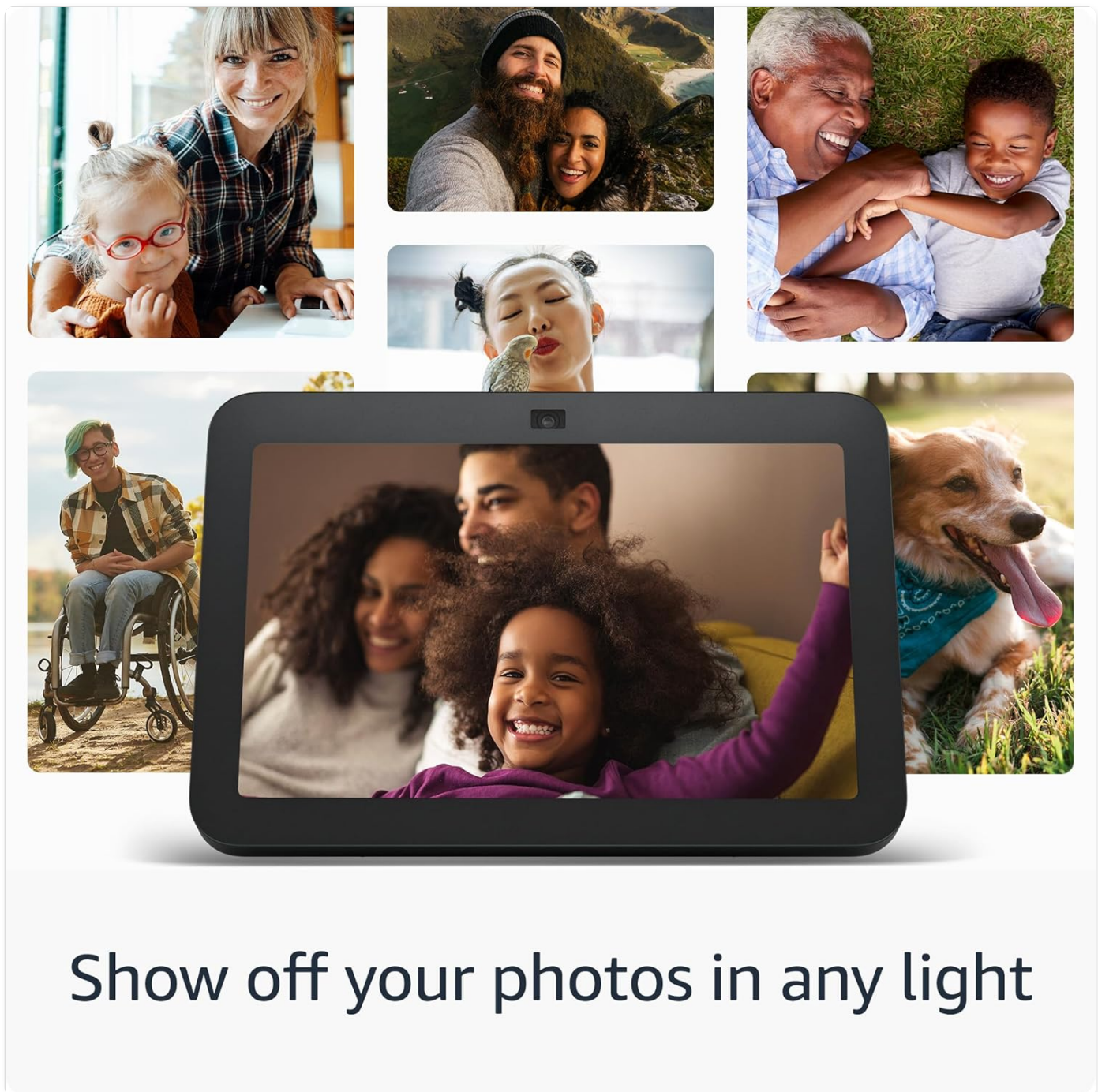


Figure 3.4: The Echo Show 8 displaying personal photos, functioning as a digital picture frame.



Easily open and close the camera shutter

Figure 3.5: Detail of the Echo Show 8's camera shutter, providing physical privacy control.

3.5 Accessibility Features

The Echo Show 8 includes various accessibility features to personalize Alexa to your abilities. These can be found under Settings → Accessibility.

- **Tap to Alexa:** Access Alexa via touch through on-screen tiles or a keyboard.
- **Adaptive Listening:** Provides more time before Alexa responds.
- **Preferred Speaking Rate:** Control how fast or slow Alexa speaks.
- **Captioning:** Alexa Captioning, Call Captioning, and Closed Captioning for supported content.
- **Show and Tell:** Helps identify products for users who are blind or visually impaired.
- **VoiceView screen reader:** For customers who are blind or visually impaired.
- **Screen Magnifier:** Zoom in/out and pan around the screen.
- **Notify When Nearby:** Plays notification sounds when detected near the device.
- **Kindle Read Aloud:** Alexa reads Kindle books aloud.

- **Real Time Text:** Type live text in a video call.
- Additional settings for Color Inversion, Color Correction, Request Sound, and more.

4. MAINTENANCE

To ensure the longevity and optimal performance of your Echo Show 8, follow these general maintenance guidelines:

- **Cleaning:** Gently wipe the screen and device exterior with a soft, lint-free cloth. Avoid abrasive cleaners or sprays directly on the device.
- **Placement:** Place the device on a stable, flat surface away from direct sunlight, heat sources, and excessive moisture. Ensure adequate ventilation around the device.
- **Software Updates:** Your Echo Show 8 will automatically receive software security updates. Ensure it is connected to Wi-Fi to receive these updates.
- **Power Cycle:** If the device becomes unresponsive, unplug the power adapter for a few seconds and then plug it back in to restart.

5. TROUBLESHOOTING

This section addresses common issues you might encounter with your Echo Show 8.

5.1 Device Not Responding

- **Check Power:** Ensure the power adapter is securely connected to the device and the wall outlet.
- **Restart:** Unplug the power adapter for 30 seconds, then plug it back in.
- **Microphone Muted:** Check if the microphone/camera off button is pressed (indicated by a red light). Press it again to unmute.

5.2 Wi-Fi Connectivity Issues

- **Check Router:** Ensure your Wi-Fi router is on and functioning correctly.
- **Restart Router:** Unplug your router for 30 seconds, then plug it back in.
- **Re-enter Password:** Go to Settings on your Echo Show 8, then Network, and try re-entering your Wi-Fi password.
- **Signal Strength:** Move the Echo Show 8 closer to your Wi-Fi router if signal is weak.

5.3 Alexa Not Understanding Commands

- **Speak Clearly:** Ensure you are speaking clearly and at a normal volume.
- **Reduce Noise:** Minimize background noise when giving commands.
- **Wake Word:** Ensure you are using the correct wake word ("Alexa").
- **Microphone Muted:** Verify the microphone is not muted.

6. SPECIFICATIONS

Feature	Detail
Size	7.9" x 5.5" x 4.2" (200mm x 139mm x 106mm)
Weight	36.6 oz (1034 grams)
Display	8.0" HD touch screen

Feature	Detail
Camera	13 MP centered camera with built-in shutter
WiFi Connectivity	Dual-band WiFi (802.11a/b/g/n/ac)
Smart Home Hub	Zigbee + Matter + Thread Border Router
Bluetooth Connectivity	A2DP, AVRCP support
Audio	2 x 2" full range neodymium drivers with passive bass radiator
Processor	Octa-Core SoC with Amazon AZ2 Neural Network Engine
Generation	Echo Show 8 (3rd Gen) - 2023 release
Language	Alexa speaks English and Spanish

7. WARRANTY AND SUPPORT

7.1 Limited Warranty

Your Amazon Echo Show 8 (3rd Gen) includes a 1-year limited warranty and service. Optional extended warranties (1-year, 2-year, and 3-year) may be available for purchase separately in the U.S. Use of the Echo Show 8 is subject to the terms and conditions provided by Amazon.

7.2 Software Security Updates

This device is guaranteed to receive software security updates for at least four years after it is last available for purchase as a new unit on Amazon websites. For information specific to your device, visit the Manage Your Content and Devices section on Amazon.

7.3 Privacy Features

The Echo Show 8 is designed with multiple layers of privacy controls, including wake word technology, streaming indicators, a microphone/camera off button, a built-in camera shutter, and the ability to view and delete your voice recordings. For more details, visit the Alexa Privacy Hub.

7.4 Customer Support

For further assistance, technical support, or warranty claims, please visit the official Amazon support website or contact Amazon customer service.

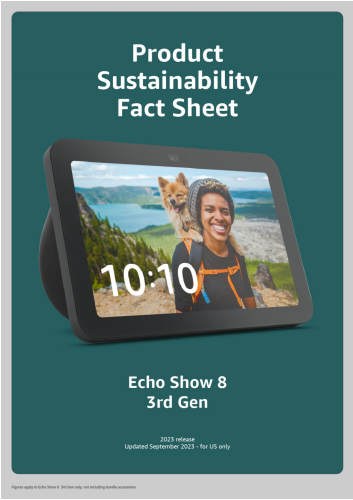
- **Online Support:** amazon.com/devicesupport
- **Alexa Privacy Hub:** amazon.com/alexaprivacy



[pdf] Frequently Asked Questions Troubleshooting Guide Guide

THIRDREALITY Zigbee Vibration Sensor 3 Pack with 110dB Alarm Hub Required Adjustable Sensitivity Work SmartThings Home Assistant via ZHA Z2M and Echo Devices Built in hub 3RVS01031Z Troubleshooting Guide Third Reality Inc B0DL9Z9TR7 B0C9DP249C B0DG4KD97V 61sBEISCXCL m media amazon images I |||

Vibration sensor FAQ 1 How to turn off the siren of the vibration sensor Please open the battery cover, and turn on/off the siren switch. 2 How to set the sensitivity of the vibration sensor Please open the battery cover, and set the sensitivity with the sensitivity switch. 3 How to factory reset ... lang:en score:22 filesize: 106.53 K page_count: 1 document date: 2024-06-06



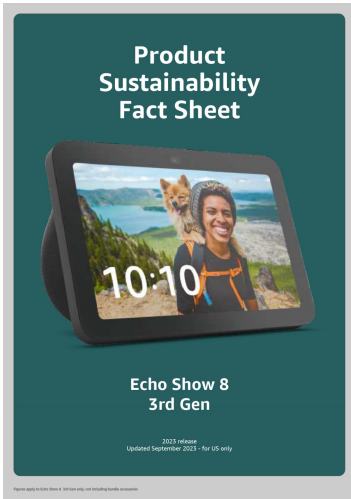
[pdf] Accessories

Echo Show 8 EN anonymous Amazon Sustainability About m media amazon images G 01 kindle journeys sustainabilityfs ||| Product Sustainability Fact Sheet Echo Show 8 3rd Gen 2023 release Updated September 2023 - for US only Figures apply to Echo Show 8 3rd Gen only, not including bundle accessories Designed for Sustainability We re working to make Amazon devices more sustainable--from how we build them to how custo... lang:en score:22 filesize: 5.68 M page_count: 9 document date: 2023-09-27



[pdf] Guide

ELKO One Matter Thermostat 16 A Device User Guide Schneider Electric thermostat filetype after 2024 06 13 Google Search productinfo schneider electric elko matter a device user guide dd00686115 English ved 2ahUKEwj28q91eeGAxVXMVkJFhC6BHEQr4kDegQIQhAA usg AOvVaw3W2qq2odQgo bIDUNydw3 ||| ELKO One Matter Thermostat 16 A Device User Guide Information about features and functionality of the device. 06/2024 www.elko.no Legal Information The information provided in this document contains general descriptions, technical characteristics and/or recommendations related to products/solutio... lang:en score:21 filesize: 4.41 M page_count: 46 document date: 2024-06-14



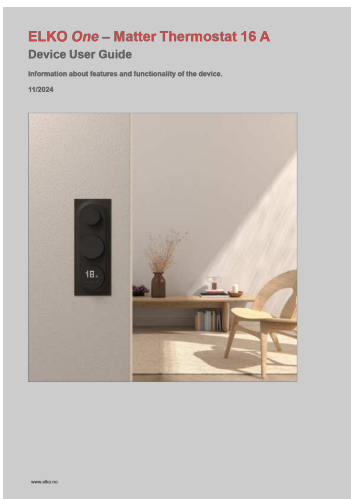
[\[pdf\]](#) Accessories

Echo Show 8 EN anonymous 1 giorno fa — This device is made from 29% recycled materials The plastic 50% post consumer aluminum parts are m media amazon images G 01 kindle journeys

4SyyUo0T699vqFVj |||

Product Sustainability Fact Sheet Echo Show 8 3rd Gen 2023 release Updated September 2023 - for US only Figures apply to Echo Show 8 3rd Gen only, not including bundle accessories Designed for Sustainability We re working to make Amazon devices more sustainable--from how we build them to how custo...

lang:en score:20 filesize: 5.68 M page_count: 9 document date: 2023-09-19



[ELKO One – Matter Thermostat 16 A: User Guide for Smart Heating Control](#)

Comprehensive user guide for the ELKO One Matter Thermostat 16 A, detailing features, installation, setup, user settings, and troubleshooting for smart home heating systems.

lang:en score:19 filesize: 4.34 M page_count: 50 document date: 2024-12-04



[\[pdf\]](#)

02 Smart Light Socket B17zYVdB5ZL ref dp product quick view m media amazon images I |||

Smart Light Socket E0755-E27-ZigBee ZigBee Smart Light socket E27 Type 1 Just Support ZigBee hubs as follow Echo Studio Echo 4th Gen Not the Echo Dot 4th Gen Echo Show 8 3rd Gen Echo Show 10/Echo Show 3rd Gen Echo Plus modelZE39KL Echo Plus 2ndGen modelL9D29R Echo plus 3rdGen Samsung Smar...

lang:en score:17 filesize: 3.9 M page_count: 8 document date: 2023-12-25

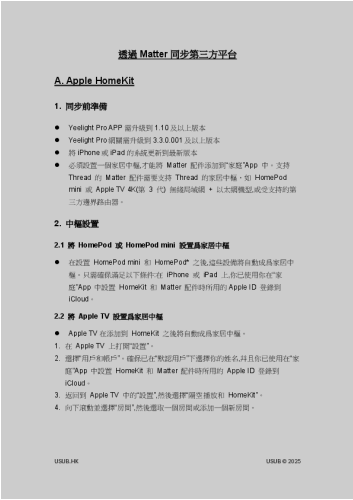


[pdf] Guide

Planungshandbuch hGjRfQnsadBrrqUbPeNXRLaA0H3Tg4xXNF0FZ6VZCjoglvVZo library e abb public
1c125e04ea1a472880015d702cd2d53b 9AKK108470A8247 de B Planning guide products and systems x
sign RN19ZYYI52rZxv |||

Produkte /Systeme Stand Mai 2025 Planungshandbuch 2 PL
ANUNGSHANDBUCHINHALT Inhalt 01 04 Schalter und Steckdosen Lichtsteuerung
Schalterprogramme Designbersicht..... 10 Plattform
63.....

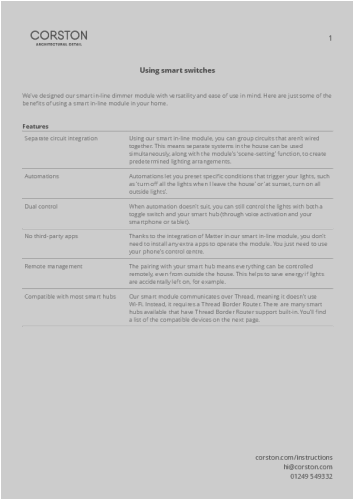
lang:de score:15 filesize: 35.48 M page_count: 324 document date: 2025-06-13



[YeeLight Pro Matter Integration Guide: Connecting to Apple HomeKit, Alexa, Google Home & SmartThings](#)

Comprehensive guide to integrating YeeLight Pro devices with smart home platforms like Apple HomeKit, Amazon Alexa, Google Home, and SmartThings using Matter. Learn setup steps, supported devices, and pairing procedures.

lang:nl score:15 filesize: 648.3 K page_count: 7 document date: 2024-12-30

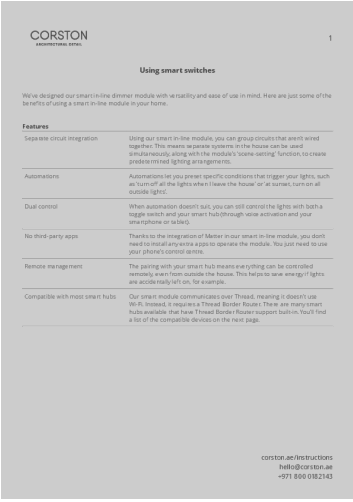


[pdf] Installation Guide

Download 1G Smart Retractive Toggle Switch Antique Brass Switches Sockets Corston EN UK Using
smart switches v0 r0 v 1744788389 cdn shopify s files 1 0081 6932 4641 |||

1 Using smart switches We ve designed our smart in-line dimmer module with
versatility and ease of use in mind. Here are just some of the benefits of using a
smart in-line module in your home. Features Separate circuit integration Automations
Dual control No third-party apps Remote management Com...

lang:en score:13 filesize: 77.99 K page_count: 5 document date: 2025-04-11



[pdf] Installation Guide

Download 1G Smart Retractive Toggle Switch Clear Bronze Black Switches Sockets Corston Trading

LLC EN AE Using smart switches v0 r0 v 1744788517 cdn shopify s files 1 0642 8583 5415 |||

1 Using smart switches We ve designed our smart in-line dimmer module with versatility and ease of use in mind. Here are just some of the benefits of using a smart in-line module in your home. Features Separate circuit integration Automations Dual control No third-party apps Remote management Com...

lang:en score:13 filesize: 78.55 K page_count: 5 document date: 2025-04-11



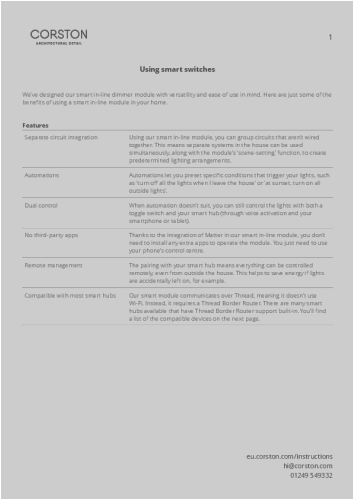
[pdf] Installation Guide Instructions

DownloadInstructions CorstonEN US Using smart switches r0cdn shopify s files 1 0736 7367 0911 EN r0

v 1745415731 |||

1 Using smart switches INSTRUCTIONS Corston smart modules are designed with maximum versatility in mind, so you don t need to jump through hoops to use one. Here are some of the benefits of using a smart module in your home. F E A T U R E S Separate circuit integration Using our smart module, you ca...

lang:en score:13 filesize: 70.62 K page_count: 4 document date: 2025-04-03



[pdf] Installation Guide

DownloadSingle Smart Retractive Toggle Switch Clear Polished Nickel Switches SocketsEN EU Using

smart switches v0 r0cdn shopify s files 1 0668 5232 3546 EN r0 v 1744787787 |||

1 Using smart switches We ve designed our smart in-line dimmer module with versatility and ease of use in mind. Here are just some of the benefits of using a smart in-line module in your home. Features Separate circuit integration Automations Dual control No third-party apps Remote management Com...

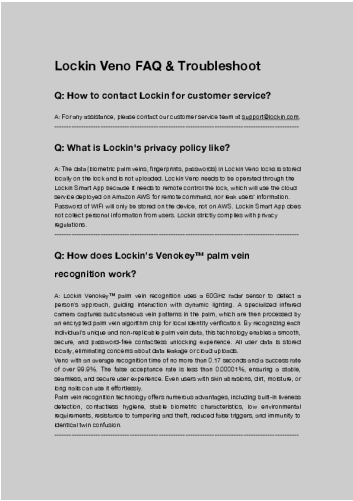
lang:en score:13 filesize: 78.14 K page_count: 5 document date: 2025-04-11



Corston Smart Switches: Installation and Usage Guide

Comprehensive instructions for setting up and using Corston smart modules, covering features like separate circuit integration, automations, dual control, and compatibility with major smart home ecosystems. Learn how to integrate Corston smart switches into your home for enhanced control and energy saving.

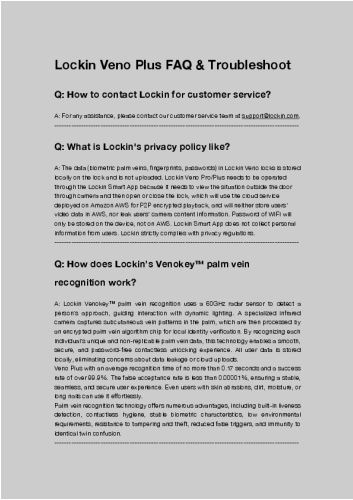
lang:en score:13 filesize: 117.68 K page_count: 4 document date: 2025-07-11



Lockin Veno FAQ & Troubleshooting Guide

Comprehensive Frequently Asked Questions and troubleshooting solutions for the Lockin Veno smart lock, covering installation, features, connectivity, and maintenance.

lang:en score:10 filesize: 386.5 K page_count: 24 document date: 2025-08-22



Lockin Veno Plus FAQ & Troubleshooting Guide

Comprehensive Frequently Asked Questions and troubleshooting guide for the Lockin Veno Plus smart lock, covering installation, connectivity, smart home integration, security features, and battery management.

lang:en score:10 filesize: 396.97 K page_count: 25 document date: 2025-08-20

Lockin Venο Pro FAQ & Troubleshoot

Q: How to contact Lockin for customer service?

A: For any assistance, please contact our customer service team at support@lockin.com.

Q: What is Lockin's privacy policy like?

A: The data (template parts, vein fingerprints, passwords) in Lockin Venο Pro is stored locally on the lock and is not uploaded. Lockin Venο Pro Plus needs to be operated through the Lockin Smart App because it needs to view the situation outside the door through camera and thumbnail or close the lock, which will use the cloud service deployed on Amazon AWS for P2P encrypted playback, and will neither store users' video data in AWS, nor use users' camera content information. Passwords in iOS will only be stored on the device, not on AWS. Lockin Smart App does not collect personal information from users. Lockin strictly complies with privacy regulations.

Q: Where does the inspiration for the Lockin Venο Pro come from?

A: We studied traditional door locks have so many problems—they're not always safe, they're not very elegant, and the overall experience can be frustrating. Think about it: fingerprints sensors fail all the time, door cameras miss important events, and dealing with battery life is such a hassle. So we asked ourselves, what if we could make a smart lock that truly solved these issues? That's where the Lockin Venο Pro comes in. With biometric™ palm vein recognition, you get touch-free unlocking—it's safer and cleaner. The 180° ultra-wide 2K HD LockinCam gives you a full view outside your door. And with AI-powered detection and solar-powered battery life, the lock won't fail early without interruptions. At Lockin, every feature we create is designed to solve real problems and give you a smart home experience that's both secure and stylish.

[Lockin Venο Pro FAQ & Troubleshooting Guide](#)

Comprehensive guide to Lockin Venο Pro smart lock features, installation, connectivity, security, and troubleshooting. Learn about palm vein recognition, smart home integration, and more.

lang:en score:10 filesize: 399.31 K page_count: 26 document date: 2025-08-20