

BIUBLE C2

BIUBLE Electric Spin Scrubber User Manual

Model: C2

Brand: BIUBLE

1. INTRODUCTION

Thank you for choosing the BIUBLE Electric Spin Scrubber. This cordless cleaning brush is designed to simplify your cleaning tasks with its powerful motor, adjustable handle, and versatile brush heads. It is ideal for cleaning bathrooms, bathtubs, tiles, floors, and other hard-to-reach areas, reducing the need for strenuous scrubbing.

Please read this manual thoroughly before first use to ensure safe and optimal operation of your device.

2. SAFETY INFORMATION

- Always ensure the device is turned off before attaching or detaching brush heads, or before charging.
- Do not immerse the entire unit in water. The head of the electric cleaning brush is IPX7 waterproof, but the main body and charging port should be kept dry.
- Keep out of reach of children and pets.
- Use only the provided charging cable. Do not use damaged cables or chargers.
- Avoid using the scrubber on delicate surfaces that may be scratched. Test on an inconspicuous area first.
- For very stubborn stains, it is recommended to soak the area with cleaner for 3-5 minutes before using the scrubber.

3. PACKAGE CONTENTS

Verify that all items are present in the package:

- 1 x BIUBLE Electric Spin Scrubber (Main Unit)
- 1 x Rechargeable Battery (integrated)
- 1 x Type-C Charging Cable (USB adapter not included)

- 5 x Replaceable Brush Heads:
 - Dome brush (for bathtub, tile, walls)
 - Large flat brush (for floors, staircases)
 - Small flat brush (for counters, sinks, toilets)
 - Corner brush (for tile grout, edges, corners)
 - Chenille brush (for wood floor, window, ceilings)
- 1 x User Manual
- 1 x Storage Bag



Image: All components included in the BIUBLE Electric Spin Scrubber kit.

4. SETUP AND ASSEMBLY

The BIUBLE Electric Spin Scrubber is designed for easy assembly. Follow these steps to get your scrubber ready for use:

1. **Attach Brush Head:** Align the desired brush head with the main scrubber unit and press firmly until it clicks into place.
2. **Connect Extension Pole:** If using the extension pole, align the male end of the pole with the female receptacle on the main scrubber unit and push until it locks. Repeat for additional pole sections if

needed.

3. **Secure Handle:** Ensure all connections are secure before operation.

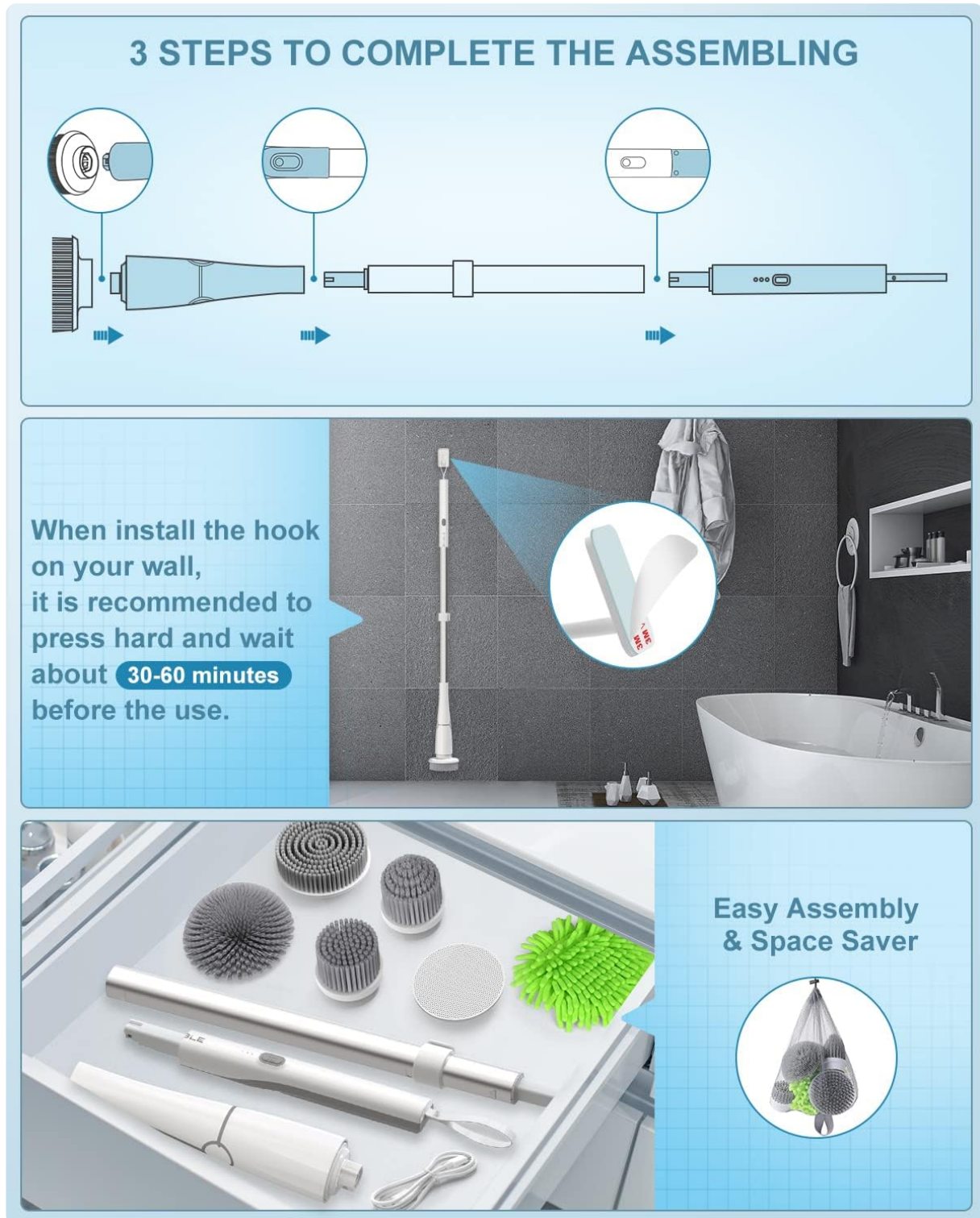


Image: Visual guide for assembling the scrubber in three simple steps.

Wall Hook Installation: If using the included wall hook for storage, ensure the surface is clean and dry. Press the hook firmly onto the wall and wait approximately 30-60 minutes before hanging the scrubber to ensure proper adhesion.

5. OPERATING INSTRUCTIONS

5.1 Powering On and Speed Settings

The scrubber features dual powerful spin speeds for various cleaning needs:

- **450 RPM (Standard Speed):** Suitable for general cleaning and lighter stains.
- **600 RPM (High Speed):** Provides enhanced power for stubborn stains and heavily soiled surfaces. For optimal control at this speed, it is suggested to use with two hands.

To switch between speeds, press the power button located on the handle. The indicator lights will show the current speed setting.

2-SPEED ADJUSTABLE

50% Stronger Spin Speed

Medium Spin Speed

450 RPM



High Spin Speed

600 RPM

Suggest use with 2 hands



Image: Visual representation of the 450 RPM and 600 RPM speed settings.

5.2 Adjustable Angles

The scrubber head can be adjusted to four different angles (90°, 120°, 150°, 180°) to reach various surfaces without bending or kneeling. Simply press the angle adjustment button and pivot the head to the

desired position.

MULTI-FUNCTIONAL VELCRO BRUSH HEAD

Packaged



Fits for most mop pads scrubber pads



WAX MOP PADS



SOFT SCRUBBY MOP PADS



CHENILLE



STEAM MOP PADS

Image: Demonstrates the adjustable handle length and multiple angle settings for the brush head.

5.3 Using Different Brush Heads

Select the appropriate brush head for the surface you are cleaning:

- **Dome Brush:** Ideal for curved surfaces like bathtubs, sinks, and toilet bowls.
- **Large Flat Brush:** Best for large flat areas such as floors, walls, and shower doors.
- **Small Flat Brush:** Suitable for smaller flat surfaces like countertops, stovetops, and tight spaces.
- **Corner Brush:** Designed for cleaning grout lines, corners, edges, and other narrow areas.
- **Chenille Brush:** Gentle brush for delicate surfaces like wood floors, windows, and ceilings.

IPX7 Waterproof & Strengthened Strong Flexibility Bristles



Corner Brush

Hard-to-reach places like corner



Flat Brush

For bathroom, kitchen, floor, etc



Round Brush

For bathtub, sinks, carpets, etc



Small Flat Brush

For washbasin



Chenille Brush

No hurt to car painting

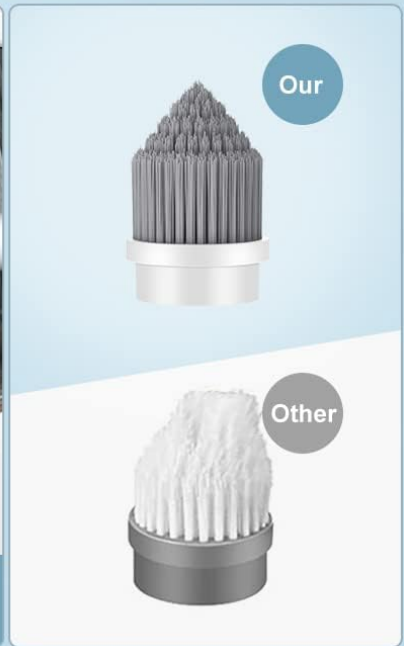


Image: Overview of the five interchangeable brush heads and their recommended applications.

6. CHARGING THE BATTERY

The BIUBLE Electric Spin Scrubber is equipped with a high-end 5100mAh rechargeable battery, providing approximately 90 minutes of continuous working time on a full charge.

- **Charging Time:** A full charge takes approximately 2.5 hours using the provided Type-C cable.
- **Charging Process:** Connect the Type-C cable to the charging port on the scrubber and plug the other end into a USB power adapter (not included). The indicator lights will show the charging status.
- **Battery Life:** The battery is designed for long-term use, and BIUBLE offers a 2-year free battery replacement service.



Image: Details on the scrubber's battery and charging features.

7. MAINTENANCE AND STORAGE

- **Cleaning the Unit:** After each use, wipe down the main unit with a damp cloth. Do not rinse the entire unit under water.
- **Cleaning Brush Heads:** Detach the brush heads and rinse them thoroughly under running water to remove dirt and debris. Allow them to air dry completely before storing.
- **Storage:** Store the scrubber and its accessories in a cool, dry place, away from direct sunlight and extreme temperatures. Use the provided storage bag for brush heads to keep them organized.

8. TROUBLESHOOTING

Problem	Possible Cause	Solution
Scrubber does not turn on.	Battery is depleted.	Charge the scrubber for 2.5 hours.
Brush head stops spinning or spins slowly.	Low battery; excessive pressure applied; brush head clogged.	Recharge the battery; reduce pressure; clean brush head.
Scrubber makes unusual noise.	Brush head not properly attached; debris caught in motor.	Re-attach brush head securely; inspect for and remove any debris.
Charging indicator lights not working.	Charging cable or adapter issue; charging port dirty.	Try a different USB adapter or cable; ensure charging port is clean.

9. SPECIFICATIONS

Feature	Detail
Brand	BIUBLE
Model Number	C2
Spin Speeds	450 RPM / 600 RPM
Battery Capacity	5100mAh
Charging Time	Approx. 2.5 hours (Type-C)
Working Time	Approx. 90 minutes
Waterproof Rating	IPX7 (Scrubber Head)
Adjustable Angles	90°, 120°, 150°, 180°
Handle Material	Enhanced thick aluminum and hard plastic
Product Dimensions	3"L x 3"W x 48"H (fully extended)
Item Weight	2.8 Pounds

10. WARRANTY AND CUSTOMER SUPPORT

BIUBLE is committed to providing high-quality products and excellent customer service.

- **2-Year Quality Qualified:** The BIUBLE electric spin scrubber comes with a 2-year quality warranty.
- **3-Month Money Back Policy:** If you are not satisfied with your purchase, you may be eligible for a refund within 3 months.
- **Lifetime Technical Support:** For any technical issues or questions regarding your product, please do not hesitate to contact BIUBLE customer support.

For support, please refer to the contact information provided on the product packaging or the official BIUBLE website.