



[Manuals.plus](#) /

> [FINTIE](#) /

> FINTIE Hard Case Instruction Manual for Microsoft Surface Pro 11/10/9 (Model ECAF002EU)

## FINTIE ECAF002EU

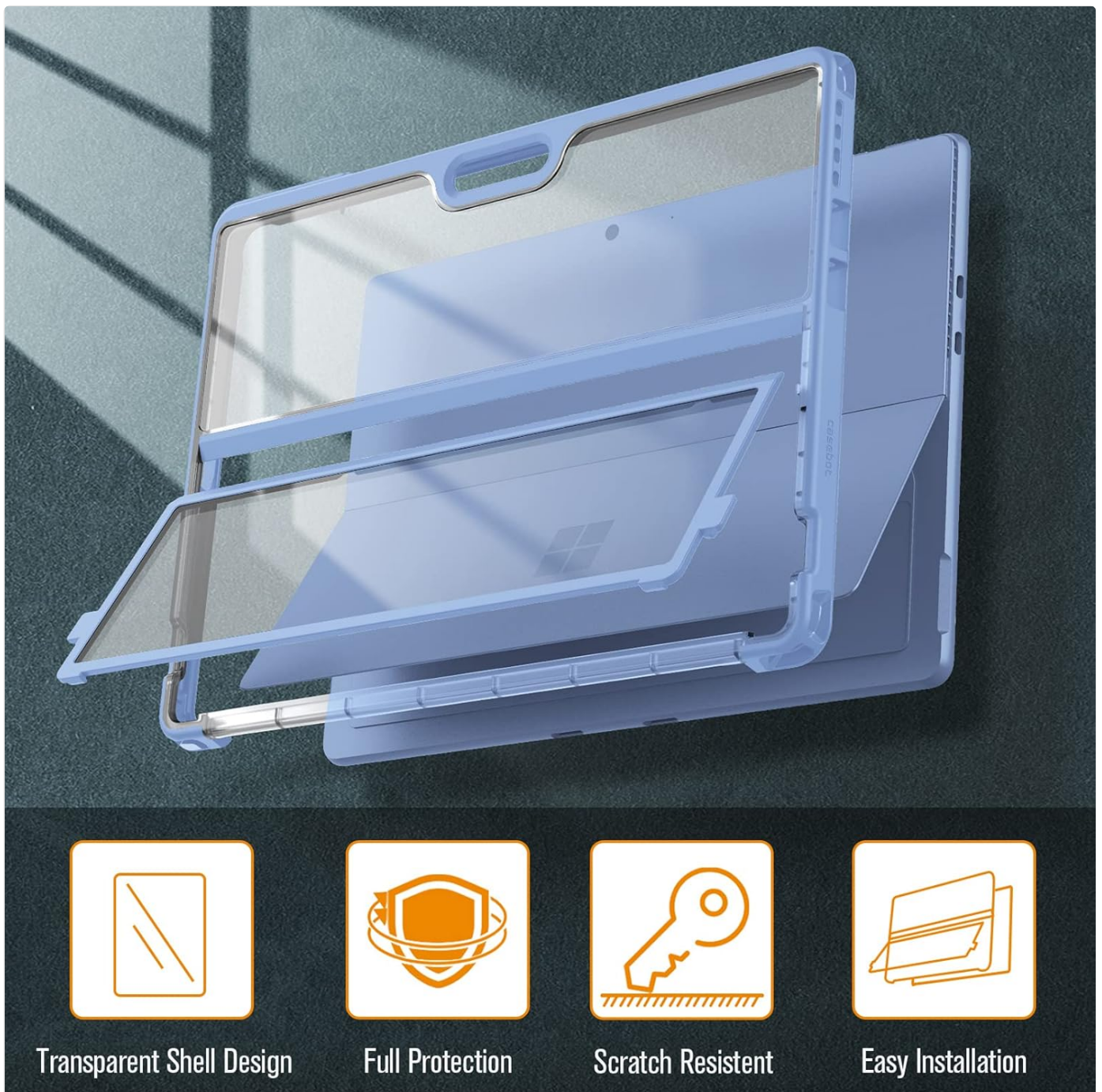
# FINTIE Hard Case Instruction Manual

For Microsoft Surface Pro 11th Edition AI (2024), Surface Pro 10 Business (2024), and Surface Pro 9 (2022) 13-inch Tablets

## 1. PRODUCT OVERVIEW

---

The FINTIE Hard Case is designed to provide robust protection for your 13-inch Microsoft Surface Pro tablet. It features a shockproof folio design with a clear transparent back shell, ensuring compatibility with the Type Cover Keyboard.



**Image 1:** Overview of FINTIE Hard Case features, highlighting its transparent shell, full protection, scratch resistance, and ease of installation.

## Compatibility

This case is specifically designed for the following 13-inch Microsoft Surface Pro models:

- New Microsoft Surface Pro 11th Edition AI (2024 Release)
- Microsoft Surface Pro 10 Business (2024 Release)
- Microsoft Surface Pro 9 5G (2022 Release)

**Important:** This case is **NOT** compatible with 13-inch Microsoft Surface Pro 8 / Microsoft Surface Pro X, 12.3-inch Microsoft Surface Pro 7+ / Pro 7 / Pro 6 / Pro 5 / Pro LTE tablets, or any other models. It works with or without the Surface Pro Type Cover Keyboard (keyboard not included) but is not compatible with the Surface Slim Pen 2.



# ATTENTION

## ONLY for these models:



Surface Pro 11 AI+PC (2024) 13"  
Touchscreen



Surface Pro 10 Business (2024) 13"  
Touchscreen



Surface Pro 9 (2022) - 13"  
Touchscreen

## HOW to find your Model Name ?

Open Control Panel  
> Hardware and Sound  
> Home Page



**DESKTOP-S3JSIA7**  
Surface Pro 9

Image 2: Visual guide illustrating the compatible Microsoft Surface Pro models (11, 10, and 9) for this FINTIE Hard Case.

## 2. SETUP: INSTALLATION GUIDE

Follow these steps to correctly install your FINTIE Hard Case:

1. **Step 1:** Slide the Surface Pro tablet from the spine of the back case all the way towards the bottom.
2. **Step 2:** Snap the four corners of the Surface Pro in place firmly.
3. **Step 3:** Open the Surface Pro's built-in kickstand.
4. **Step 4:** Align the case's kickstand, then push the kickstand into the slot on both sides of the shell.

# Installation Guide



1 Slide the Surface Pro 9 from the spine of the back case all the way towards the bottom.



2 Snap the four corners of the Surface Pro 9 in place firmly.



3 Open the Surface Pro 9's built-in kickstand.



4 Align the kickstand, then push the kickstand into the slot on both sides of the shell.

**Image 3:** Step-by-step visual instructions for installing the FINTIE Hard Case onto your Microsoft Surface Pro tablet.

**Video 1:** Official Fintie video demonstrating the installation and features of the Hard Case for Microsoft Surface Pro 9 (2022).

## 3. OPERATING INSTRUCTIONS

### Excellent Protection

The case is constructed from premium soft TPU and strong polycarbonate, offering superior protection against daily wear, drops, bumps, scratches, and stains. The rugged design ensures your device remains secure.

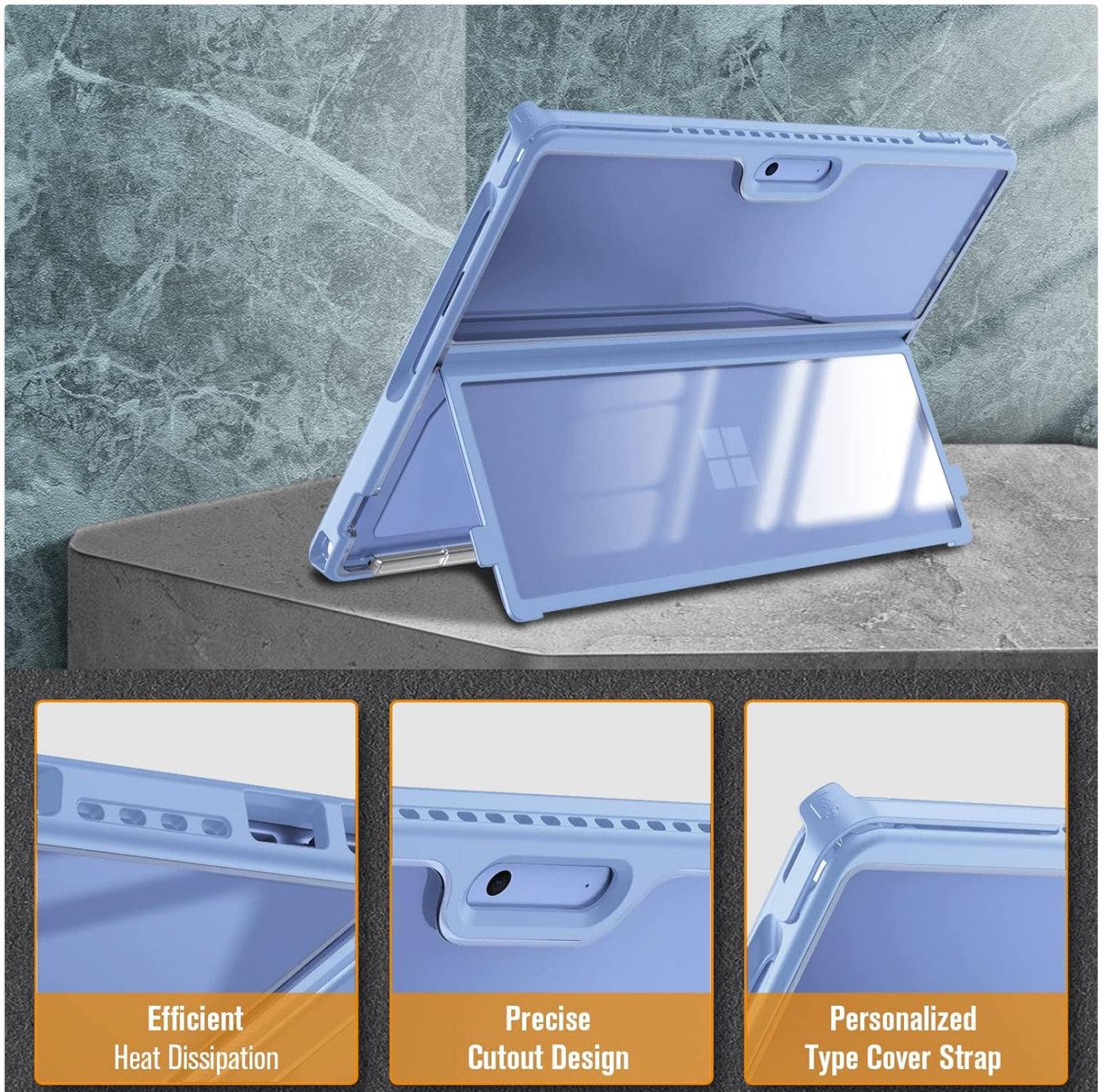
# Military Grade Drop Protection



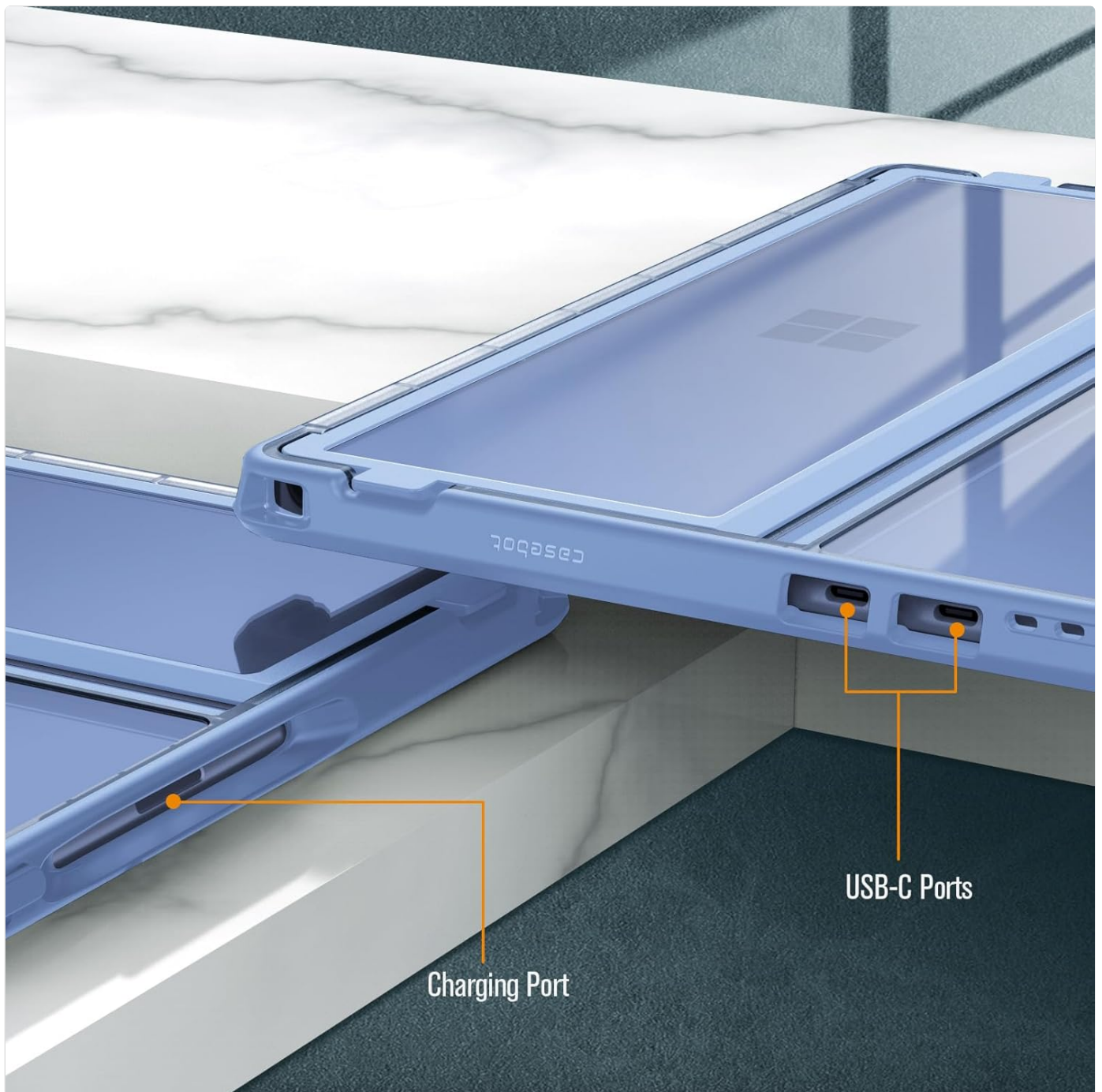
Image 4: Illustration of the FINTIE Hard Case's military-grade drop protection capabilities.

## Functional Design

Precise cutouts provide easy access to all features and controls, including the Surface kickstand, ports, jacks, and cameras. Vent access is integrated for efficient heat dissipation, and the HD clear shell design allows the Microsoft logo to remain visible.



**Image 5:** Close-up showing the case's features: efficient heat dissipation, precise cutouts for ports and buttons, and the integrated Type Cover strap.

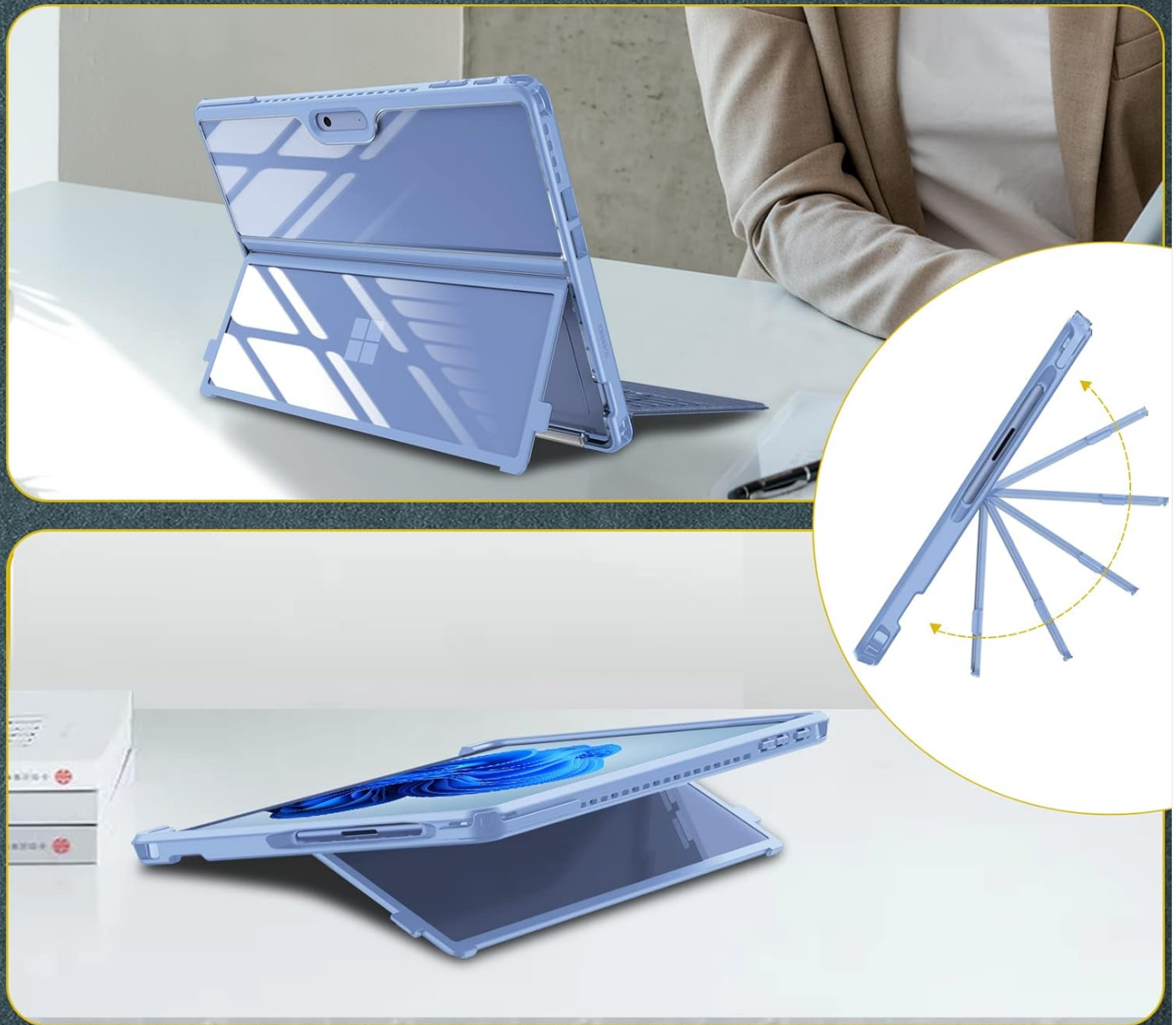


**Image 6:** View of the FINTIE Hard Case with labels indicating the charging port and USB-C ports, demonstrating precise cutouts.

### **Multi-Angle Viewing**

The built-in kickstand supports various viewing angles without requiring removal of the case. The durable hard shell also protects the integrated kickstand from scratches, bumps, and stains.

# Support Multiple **Angle Viewing**



**Image 7:** Demonstration of the FINTIE Hard Case's multi-angle viewing capability, allowing for comfortable use in various positions.

## **Type Cover Channel**

A dedicated Type Cover channel allows for fast attachment and detachment of the keyboard without needing to remove the case. The quick-fold design enables the Type Cover to be folded up behind the case, and a Type Cover strap ensures it stays folded and closed over the tablet screen.

# Support Keyboard Attachment

Only Fit Microsoft Surface Pro Signature Keyboard.



Image 8: The FINTIE Hard Case designed to seamlessly integrate with the Microsoft Surface Pro Signature Keyboard.

## 4. CARE AND MAINTENANCE

---

To ensure the longevity and appearance of your FINTIE Hard Case, follow these simple care instructions:

- **Cleaning:** Wipe the case with a soft, damp cloth to remove dust and smudges. Avoid harsh chemicals or abrasive cleaners, as these can damage the material.
- **Storage:** When not in use, store the case in a cool, dry place away from direct sunlight to prevent discoloration or material degradation.
- **Handling:** While the case offers robust protection, avoid unnecessary impacts or extreme force to maintain its structural integrity.

## 5. TROUBLESHOOTING

---

If you encounter any issues with your FINTIE Hard Case, consider the following:

- **Improper Fit:** Ensure your tablet model is one of the compatible devices listed in Section 1. Re-check the installation steps (Section 2) to confirm the tablet is correctly seated and all corners are snapped firmly.
- **Port Access Issues:** Verify that the tablet is fully inserted into the case. If certain cables or adapters are thicker than standard, they might not fit perfectly through the precise cutouts. Consider using standard-sized accessories.
- **Kickstand Stability:** Ensure the case's kickstand is properly aligned and pushed into the slots on both sides of the shell for optimal stability.

## 6. PRODUCT SPECIFICATIONS

---

Feature	Detail
Brand	FINTIE
Model Number	ECAF002EU
Color	Blue
Compatible Devices	13 Inch Microsoft Surface Pro 11th Edition AI (2024), Surface Pro 10 Business (2024), Surface Pro 9 / Pro 9 5G (2022)
Form Factor	Case
Shell Type	Hybrid
Material	Thermoplastic Polyurethane (TPU)
Additional Features	Adjustable Stand, Clear, Heavy Duty Protection, Scratch Resistant
Item Weight	0.35 Kilograms
UPC	840173920992

## 7. WARRANTY AND SUPPORT

---

FINTIE products typically come with a warranty. Based on customer feedback, a 90-day warranty is often provided. Please refer to your purchase documentation or contact FINTIE customer service for specific warranty details and support inquiries.

For further assistance, visit the official FINTIE website or contact their customer support team through the retailer where the product was purchased.