

EnginStar R150

EnginStar R150 Portable Power Station User Manual

Model: R150 | 150W Output | 155Wh Capacity

1. IMPORTANT SAFETY INSTRUCTIONS

Please read and understand all safety instructions before operating your EnginStar R150 Portable Power Station. Failure to follow these instructions may result in electric shock, fire, or serious injury.

- Do not disassemble, repair, or modify the unit.
- Do not expose the unit to fire or high temperatures.
- Do not use or store the unit in direct sunlight or in hot environments (above 45°C).
- Avoid exposure to water, rain, or high humidity.
- Keep the unit away from children and pets.
- Ensure proper ventilation during use and charging.
- The unit features multiple safety protections including over-voltage, over-temperature, short circuit, overcharging, and overload protection.
- Recharge the unit promptly after draining all power.
- Fully charge the unit every 3 months to maintain optimal battery condition.

2. PACKAGE CONTENTS

Verify that all items are present in your package:

- 1x EnginStar R150 Portable Power Station (150W)
- 1x Power Adapter (for wall charging)
- 1x Car Charger Cable
- 1x User Manual

3. PRODUCT OVERVIEW

The EnginStar R150 is a compact and lightweight portable power station designed to provide reliable power for various electronic devices. It features a 155Wh lithium-ion battery, a 110V AC outlet, multiple DC and USB outputs, and a built-in LED light.

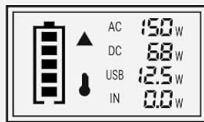


Figure 1: Front view of the EnginStar R150 Portable Power Station, showing the display, power button, AC outlet, DC outputs, USB-A ports, and USB-C port.



Figure 2: Dimensions of the EnginStar R150 Portable Power Station (7"L x 4"W x 6"H).

SMART LCD DISPLAY



Easy To Read

- Remain Battery
- Input/Output Wattage



3 LED MODES For Any Situation



Steady



Strobes

SOS

SOS

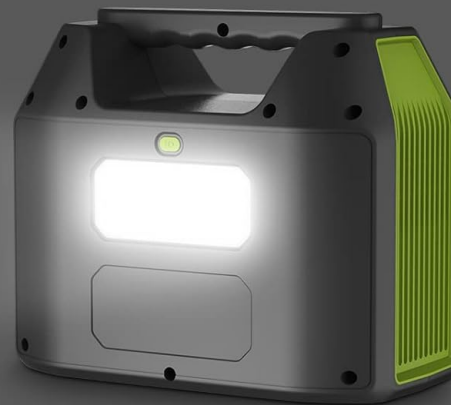


Figure 3: The smart LCD display shows remaining battery, input/output wattage. The unit also features 3 LED light modes: Steady, Strobe, and SOS.

4. SETUP AND INITIAL USE

Before first use, fully charge your EnginStar R150 Portable Power Station. This ensures the battery is conditioned for optimal performance and longevity.

1. Unpack the power station and all accessories.
2. Connect the provided power adapter to the 'INPUT' port on the power station and plug it into a wall outlet.
3. The LCD display will indicate charging status. The battery icon will animate, and the input wattage will be displayed.
4. Once fully charged, the battery icon will show full, and the input wattage will drop to 0W.

5. CHARGING THE POWER STATION

Your EnginStar R150 can be recharged using several methods:

- **Wall Outlet:** Use the included AC power adapter. (Approx. 5.5 hours)
- **Car Socket:** Use the included 12V car charger cable. (Approx. 6.5 hours)
- **Solar Panel:** Connect a compatible 13-23V OCV solar panel (not included) to the 'INPUT' port. (Approx. 5 hours, depending on sunlight intensity)
- **Gas Generator:** Can also be recharged via a gas generator.



Figure 4: Visual representation of the three primary charging methods for the power station.

6. OPERATING THE POWER STATION

6.1 Powering On/Off

Press the main power button (usually located near the display) to turn the unit on or off. The LCD display will illuminate when the unit is active.

6.2 Available Outputs

The EnginStar R150 offers a variety of output ports to charge different devices:

- **1x 110V/150W AC Outlet:** For small appliances, laptops, and CPAP machines. Press the 'AC' button to activate/deactivate.
- **2x DC Outputs (9V-12.6V/10A max):** For DC-powered devices.
- **2x USB-A Ports (5V/3.1A max):** For charging smartphones, tablets, and other USB-powered devices.
- **1x USB-C Port (5V/3A, 9V/2A):** For faster charging of compatible USB-C devices.

6.3 LCD Display

The smart LCD display provides real-time information:

- Remaining battery level.
- Current input wattage (when charging).
- Current output wattage for AC, DC, and USB ports.

6.4 LED Light Function

The built-in LED light can be activated by pressing its dedicated button. It features three modes:

- Steady Light
- Strobe Light
- SOS Signal

7. MAINTENANCE

To ensure the longevity and optimal performance of your EnginStar R150 Portable Power Station, follow these maintenance guidelines:

- **Regular Charging:** Recharge the unit at least once every 3 months, even if not in use, to prevent deep discharge and preserve battery life.
- **Storage:** Store the power station in a cool, dry place between -20°C and 45°C. Avoid direct sunlight and extreme temperatures.
- **Cleaning:** Use a soft, dry cloth to clean the exterior of the unit. Do not use abrasive cleaners or solvents.
- **Avoid Overloading:** Do not connect devices that exceed the power station's rated output (150W AC).

8. TROUBLESHOOTING

If you encounter issues with your EnginStar R150, please refer to the following common solutions:

- **Unit Not Turning On:** Ensure the battery is charged. If the battery is completely depleted, it may take a few minutes of charging before the unit responds.

- **No Output from a Port:** Check if the specific output (AC, DC, USB) is activated. Some outputs have dedicated power buttons. Verify the device connected is within the power station's wattage limits.
- **Overload Protection Activated:** If the unit shuts down, it may be due to an overload. Disconnect the device(s) exceeding the wattage limit, then restart the power station.
- **Charging Issues:** Ensure the charging cable and adapter are securely connected. Check the power source (wall outlet, car, solar panel) for functionality.

For further assistance, please contact customer support.

9. SPECIFICATIONS

Feature	Specification
Brand	EnginStar
Model Name	R150
Wattage	155 Watt-hours
Battery Capacity	42000 Milliamp Hours (Lithium Ion)
Output Wattage	150 Watts
Voltage	110 Volts
AC Output	1x 110V/150W (Pure Sine Wave)
DC Outputs	2x 9V-12.6V/10A max
USB-A Outputs	2x 5V/3.1A max
USB-C Output	1x 5V/3A, 9V/2A
Recharging Ways	Wall Outlet, 12V Car Socket, 13-23V OCV Solar Panel (not included), Gas Generator
LED Light Modes	Steady, Strobe, SOS
Item Weight	4 Pounds
Product Dimensions	7"L x 4"W x 6"H
Safety Features	Overload Protection, Short Circuit Protection, Over-discharging Protection, Overcharging Protection, Overheating Protection

10. WARRANTY AND SUPPORT

EnginStar provides lifetime technical support for your R150 Portable Power Station. For any inquiries or assistance, please contact our customer service team.

Optional extended protection plans are available for purchase, including 3-Year and 4-Year Protection Plans, and a Complete Protect plan.

11. OFFICIAL PRODUCT VIDEOS

Video 1: EnginStar Portable Power Station for Outdoor Camping. This video demonstrates the power station's features and its use in outdoor settings.

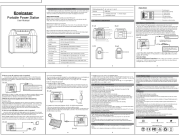

Video 2: Portable Power Station Great for Car Camping. This video highlights the power station's utility for car camping scenarios.

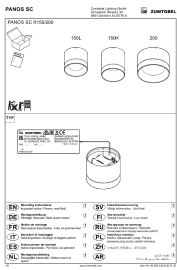


Video 3: R150 Portable Power Station Green. A detailed look at the green variant of the R150 power station.

Video 4: EnginStar Portable Power Station. This video provides a general overview of the EnginStar portable power station.

Video 5: Portable Power Station for RV Trip Outdoor Camping Use. This video showcases the power station's application for RV trips and outdoor camping.

Related Documents - R150

	<p>EnginStar R300 Portable Power Station User Manual</p> <p>Comprehensive user manual for the EnginStar R300 Portable Power Station. Learn about product features, specifications, charging instructions, security, maintenance, and application tips for this 296Wh lithium battery backup power station.</p>
	<p>GOLABS R150 Portable Power Station User Manual</p> <p>Comprehensive user manual for the GOLABS R150 Portable Power Station. Learn about its features, charging methods, specifications, safety guidelines, and troubleshooting for this 204Wh LiFePO4 solar generator.</p>

	<p>Zumtobel PANOS SC R150/200 Installation and Maintenance Guide</p> <p>Comprehensive guide for the installation, operation, and maintenance of the Zumtobel PANOS SC R150/200 lighting fixture, covering safety instructions, technical specifications, and multilingual mounting details.</p>
	<p>ION-R150 User Manual: Secure 4K Display Station Guide</p> <p>Comprehensive user manual for the ION-R150 Single Monitor 4K Secure Display Station by IONODES. Learn about installation, configuration, video management, security, and troubleshooting.</p>
	<p>RONDA R150 Mecano Automatic Watch Movement User Manual</p> <p>User manual for the RONDA R150 Mecano automatic watch movement, detailing winding, date correction, and time setting procedures. Includes information on power reserve and proper usage.</p>