

## FECiDA Zinqolay

# FECiDA Desk Grow Light (Model: Zinqolay) Instruction Manual

Model: Zinqolay | Brand: FECiDA

## 1. INTRODUCTION

---

Thank you for choosing the FECiDA Desk Grow Light. This manual provides essential information for the safe and efficient operation of your new grow light. Please read these instructions carefully before use and retain them for future reference.

## 2. PRODUCT FEATURES

---

- **UV-IR Included Ideal Full Spectrum:** This desktop grow light includes 3000K, 5000K, 660nm, UV-IR LEDs. 3000K and 5000K diodes provide more reddish and blueish light. 660nm and IR light is especially useful during bloom, where it speeds up flowering time and boost yields. 395nm UV light can make your plants health. The light looks fairly natural sunlight.
- **2000 Lumen & Bright Enough:** This tabletop grow light for indoor plant seedlings, seed starting and vegetables is designed with 208pcs high quality LEDs. 2000 Lumen brightness, 200W Incandescent Lamps Equivalent, only consumes 25 watt home electricity, running enough sunlight for your houseplant growing healthy.
- **On/Off Switch & Daisy Chain Function:** This desk grow lamp for indoor plants is designed with an input plug and an output outlet. You can connect multiple lights (max 4 units) together by daisy chain function, requiring only one outlet.
- **Stable Base and Adjustable Height Stand:** This desk grow light comes with a base and stand, allowing you to place it on a desk and adjust the lamp head height according to your application from 16" to 24".

### 3. PACKAGE CONTENTS

---

The FECiDA Desk Grow Light package includes:

- 1 x TableTop Grow Light (LED panel with flexible gooseneck)
- 1 x Stable Metal Base
- 1 x Adjustable Telescopic Rod
- 1 x Power Cable with On/Off Switch
- User Manual

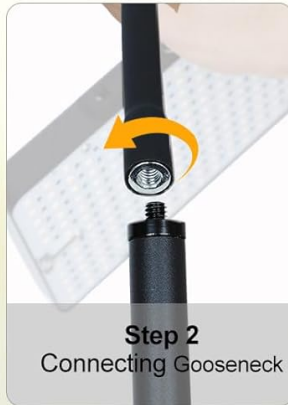
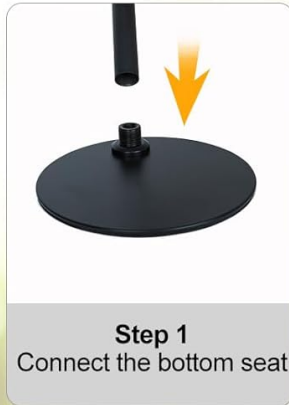
### 4. SETUP INSTRUCTIONS

---

Follow these steps for quick and easy assembly:

1. **Step 1: Install the telescopic rod to the base.** Screw the bottom end of the telescopic rod into the stable metal base until secure.
2. **Step 2: Screw the gooseneck to the telescopic rod.** Attach the flexible gooseneck arm to the top of the telescopic rod.
3. **Step 3: Connect the light panel.** Fix the LED light panel to the gooseneck with the provided nut, ensuring it is firmly attached.
4. **Step 4: Plug in the power cable.** Insert the female end of the power cable into the socket at the bottom of the lamp head. Plug the male end into a standard 110V AC outlet.

# INSTALLATION STEPS



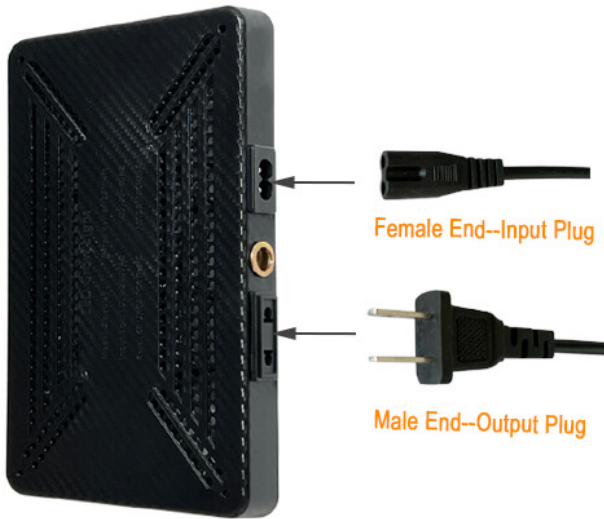
## DAISY CHAIN FUNCTION

Max up to 3 units together



Figure 1: Installation Steps for the Grow Light

# Install the Power Cable and Daisy Chain Function



**TIPS:** Please Insert the Female End of Power Cable to Bottom of the Socket in the Lamp Head TO ENSURE it is Connected.

**Warning:**

Please connect up to 5 Lamps together for Inline On/Off Switch model, up to 3 Lamps together for Timer model.



Figure 2: Adjustable Height Feature

## 5. OPERATING INSTRUCTIONS

### 5.1 Power On/Off

To turn the grow light on or off, use the inline push button switch located on the power cable.

### 5.2 Adjusting Height and Angle

- **Height Adjustment:** The telescopic rod allows height adjustment from 16 inches to 24 inches. Rotate the metal connector on the rod to loosen, adjust to the desired height, and then tighten to secure.
- **Angle Adjustment:** The flexible gooseneck allows you to bend and position the light panel to direct light precisely onto your plants.

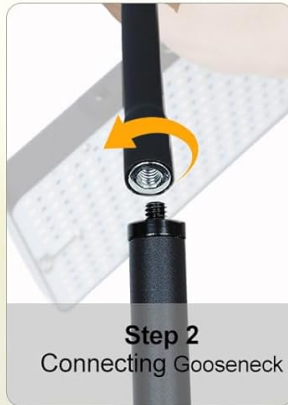
### 5.3 Daisy Chain Function

The grow light features an input plug and an output outlet, enabling you to connect multiple units (up to 4 for On/Off models) using a single power source. Use the power cable provided to link lights together.

# INSTALLATION STEPS



**Step 1**  
Connect the bottom seat



**Step 2**  
Connecting Gooseneck



**Step 3**  
Connecting lights



**Step 4**  
Rotate to adjust height

## DAISY CHAIN FUNCTION

Max up to 3 units together



Figure 3: Daisy Chain Connection Example

### 5.4 Recommended Usage

This grow light is suitable for all stages of plant growth, including sprouting, growing, flowering, and fruiting. Adjust the height of the light according to the plant's growth stage and light intensity requirements. Refer to the PPF chart for guidance:

**Table 1: Recommended PPF at Various Heights**

| Height from Plant | PPFD ( $\mu\text{mol}/\text{m}^2/\text{s}$ ) | Lux (cp) |
|-------------------|--|----------|
| 6 inches          | 540  | 3250     |
| 12 inches         | 160  | 1050     |
| 18 inches         | 87   | 525      |
| 24 inches         | 40   | 250      |

# High PPF & Super Brightness

Perfect for whole growth cycle

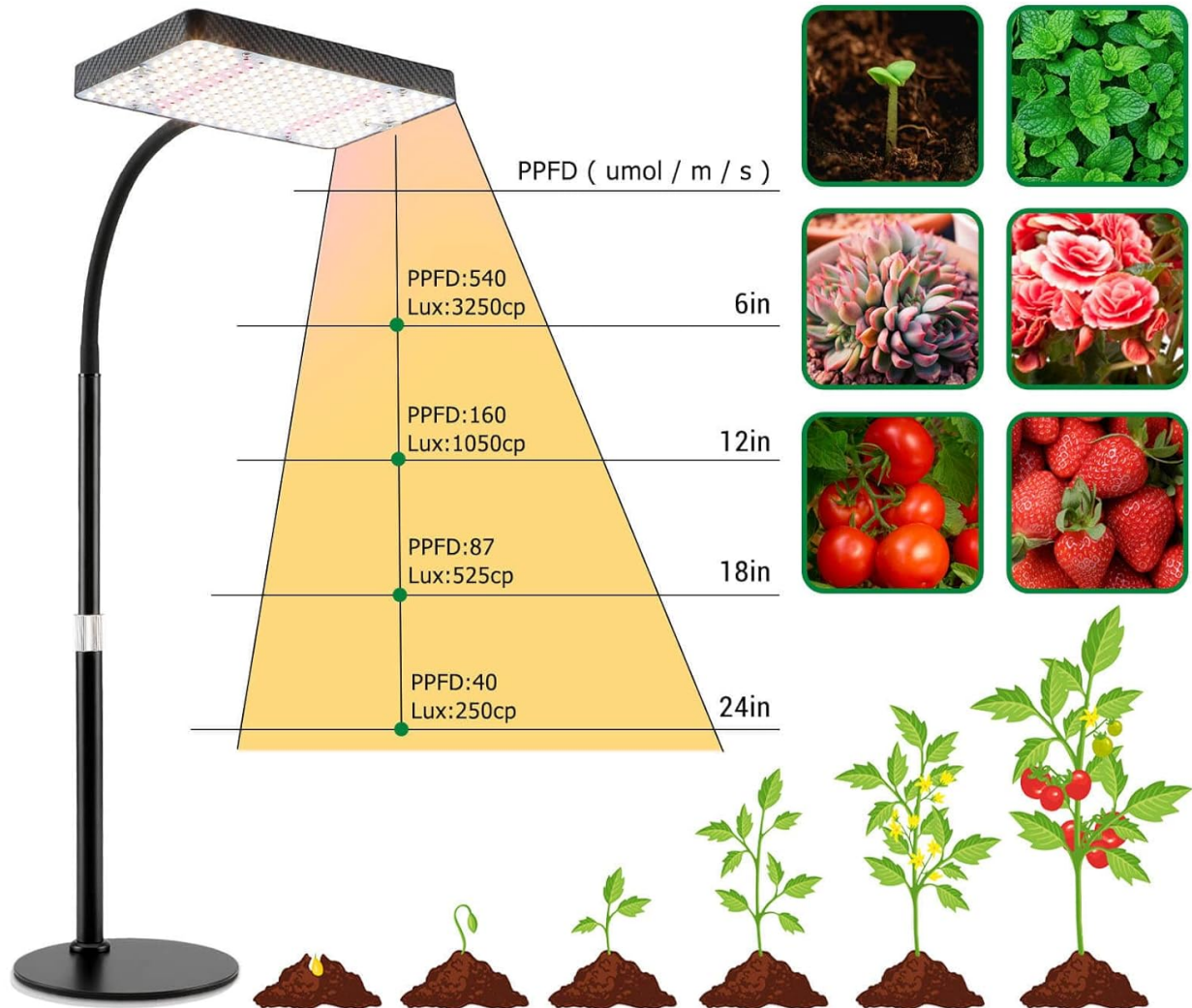


Figure 4: PPF and Brightness Guide

## 6. MAINTENANCE

To ensure optimal performance and longevity of your FECiDA Desk Grow Light:

- Keep the light panel clean from dust and debris. Use a soft, dry cloth to wipe the surface.
- Ensure proper ventilation around the light to prevent overheating.
- Regularly check the power cable for any signs of damage. If damaged, discontinue use and contact customer support.

## 7. TROUBLESHOOTING

If you encounter any issues with your grow light, please refer to the following common solutions:

- **Light not turning on:** Check if the power cable is securely plugged into both the lamp head and the wall outlet. Ensure the inline switch is in the 'On' position.
- **Unstable stand:** Ensure all connections (base to rod, rod to gooseneck) are tightened properly. Place the light on a flat, stable surface.
- **Reduced light output:** Clean the LED panel surface to remove any dust accumulation that might be blocking light.

For further assistance, please contact FECiDA customer support.

## 8. SPECIFICATIONS

| Feature               | Specification                              |
|-----------------------|--|
| Model Number          | Zinqolay                                   |
| Wattage               | 25 watts                                   |
| Light Source Type     | LED (208 individual LEDs)                  |
| Spectrum              | Full Spectrum (3000K, 5000K, 660nm, UV-IR) |
| Brightness            | 2000 Lumen                                 |
| Height Adjustment     | 16" - 24"                                  |
| Control Method        | Push Button (On/Off)                       |
| Connectivity Protocol | Wired (Daisy Chain up to 4 units)          |
| Product Dimensions    | 0.79"D x 5.12"W x 8.27"H                   |
| Item Weight           | 930 Grams                                  |
| Base Material         | Aluminum                                   |
| Indoor/Outdoor Usage  | Indoor                                     |
| Voltage               | 110 Volts (AC)                             |
| Color                 | Black Case, Sunlike Light                  |

## 9. WARRANTY AND SUPPORT

FECiDA provides a **12-month warranty** for this product. If you experience any issues or have questions, please contact FECiDA customer service through Amazon online message, email, or social media. We aim to

respond within 24 hours and resolve your problem as soon as possible.

## 10. VISUAL AIDS

### Product Images



The FECiDA Desk Grow Light in action, providing light to indoor plants.

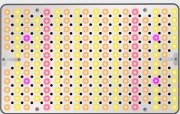


Detailed view of the LED panel and its specifications.

**UV IR Included, Ideal Full Spectrum**  
Sunlight for all stages of plant growth

- UV Light(395nm)**  
UV light can sterilize and disinfect, and proper amount of UV light can make plants healthier.
- IR Light(730nm)**  
Speeds up the Phytochrome conversion, allowing plants to produce a greater yield. IR is dimmer than other red lights.
- Warm White Light(3000k)**  
Boosts plants bloom, making flowers bigger and vivid.
- Blue Light(5000k)**  
Promotes plants germination, increasing the growth rate of plants.
- RED Light(660nm)**  
Yields more leaves and crops when combined with blue light.

**Full Spectrum**  
NO need to adjust light color



Height: 18" (45cm)

|     |     |     |     |     |
|-----|-----|-----|-----|-----|
| 100 | 120 | 130 | 120 | 100 |
| 120 | 160 | 150 | 160 | 120 |
| 120 | 160 | 150 | 160 | 120 |
| 120 | 160 | 150 | 160 | 120 |
| 100 | 120 | 130 | 120 | 100 |

2.4FT(72CM)

Explanation of the UV-IR Full Spectrum technology.



Key dimensions and components of the grow light.



Visual comparison of plant growth with and without the grow light.



The grow light integrated into a home plant setup.

## Official Product Videos

Video: FECiDA Grow Light Beautify Your Plants and Home. This video demonstrates how the grow light enhances the appearance and health of various indoor plants in a home setting.

Video: I Love Fecida Grow Light - This Ones For Desk Top - Unboxing. An unboxing and initial setup demonstration of the FECiDA Desk Grow Light, highlighting its components and ease of assembly.

Video: LED Grow Lights for Indoor Plants, 200W Desk Grow Lamp. This video showcases the grow light's features and its application for various indoor plants, emphasizing its effectiveness.

