

[Manuals.plus](#) /

› [KAMIWI](#) /

› KAMIWI No Drill Drywall TV Mount Instruction Manual

KAMIWI KAMIWI-3A-22-55

KAMIWI No Drill Drywall TV Mount

INSTRUCTION MANUAL FOR MODELS 22-55 INCH TVs

Introduction

Thank you for choosing the KAMIWI No Drill Drywall TV Mount. This mount is designed for easy and secure installation of flat-screen televisions ranging from 22 to 55 inches and weighing up to 100 lbs. Its innovative studless design allows for quick mounting on drywall or plaster walls without the need for drilling or locating studs. Please read this manual thoroughly before installation to ensure proper setup and safe operation.

Safety Information

- Ensure the wall surface is suitable for drywall or plasterboard installation. This mount is not designed for brick, concrete, or solid wood walls without proper anchors (not included).
- Do not exceed the maximum weight capacity of 100 lbs (45 kg).
- Verify your TV's VESA pattern is compatible (VESA 200x100mm to 400x400mm).
- Always use appropriate safety gear during installation, such as eye protection.
- Keep small parts away from children.
- If you are unsure about any part of the installation process, seek professional assistance.

Package Contents

Please check to ensure all components are present and undamaged before beginning installation.

PACKING LIST



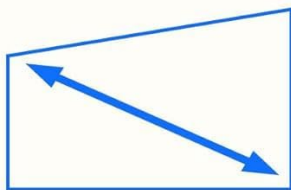
Image: Detailed view of all components included in the KAMIWI No Drill Drywall TV Mount package, including the TV mounting bracket, nails, level, and various bolts and washers.

- TV Mounting Bracket (Wall Plate)
- TV Brackets (for attaching to TV)
- Nails (x25)
- Bubble Level
- Various M8, M6, M5, M4 Bolts (different lengths)
- Bolt Washers
- Bolt Washers for 4.25mm bolts

Compatibility

The KAMIWI No Drill Drywall TV Mount is compatible with most flat-screen TVs from 22 to 55 inches, weighing up to 100 lbs. It supports standard VESA patterns from 200x100mm to 400x400mm. This mount is specifically designed for drywall and plasterboard walls.

FIT ALL TV Brands 22"-55"



Fit **22"-55"** TVs



up to **100** lbs (45 kg)



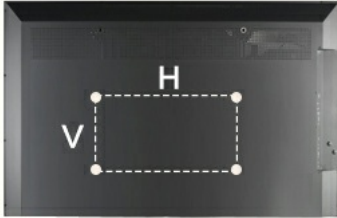
MIN VESA: 200x100 mm
MAX VESA: 400x400mm

NOTE: VESA=Horizontal x Vertical (the four holes on the back of the TV)

Image: Diagram illustrating TV size compatibility (22-55 inches), weight capacity (up to 100 lbs), and VESA pattern range (MIN VESA: 200x100mm, MAX VESA: 400x400mm).

Will This Mount Fit Your TV?

Check the VESA



MIN VESA: 200x100 mm
MAX VESA: 400 x 400mm

Check TV Specs



TV Size: 22"-55"
TV Weight: up to 100 lbs

Check Wall Types



Drywall
Plasterboard

Image: Visual guide to check VESA, TV specifications (size and weight), and wall types (drywall, plasterboard) for compatibility with the mount.

Installation Guide

This mount is designed for quick and easy installation, typically within 10 minutes, requiring only a hammer and a Phillips head screwdriver.

NO STUD, NO DRILL | HANG TV in **10** MINUTES



Image: Illustrates the 'No Stud, No Drill' feature, showing the mount being held against a wall with a hammer, and crossed-out images of a drill and stud finder, emphasizing the ease of installation.

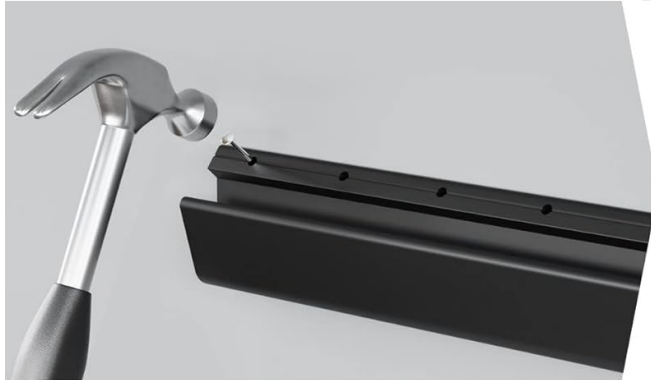
1. **Step 1: Attach TV Brackets**

Secure the two TV brackets to the back of your television using the appropriate bolts and washers from the package. Ensure they are firmly tightened. The brackets should align with your TV's VESA mounting holes.

EASY & FAST INSTALLATION

Step 1

Attach TV brackets



Step 2

Install wall plate



Step 3

Hang TV onto wall plate

Image: A three-step visual guide for installation. Step 1 shows attaching TV brackets to the back of the TV. Step 2 shows installing the wall plate with a hammer. Step 3 shows hanging the TV onto the wall plate.

2. Step 2: Install Wall Plate

Choose the desired location on your drywall or plaster wall. Place the main TV mounting bracket (wall plate) against the wall. Use the included bubble level to ensure it is perfectly horizontal. Once aligned, use a hammer to gently tap the nails through the pre-drilled holes in the wall plate until it is securely fastened to the wall. Ensure all nails are fully inserted.

3. Step 3: Hang TV onto Wall Plate

Carefully lift your television with the attached TV brackets. Align the TV brackets with the wall plate and gently lower the TV until the brackets hook securely onto the wall plate. Ensure the TV is stable and level.

For a visual demonstration of the final mounted product, refer to the image below.



Image: A KAMIWI TV mount securely attached to the back of a flat-screen TV, with the TV being held up to a wall, demonstrating the slim profile and ease of attachment.

Product Features

- **No Stud, No Drilling:** Innovative design allows for installation directly into drywall or plaster walls without the need for studs or power tools.
- **Sturdy Alloy Construction:** Made from high-quality alloy materials, ensuring durability and reliability for TVs up to 100 lbs.



Image: Close-up views highlighting the sturdy and strong structure of the mount, the integrated bubble level for easy alignment, and the foam backing for wall protection.

- **Easy Installation:** Can be installed in approximately 10 minutes with minimal tools.
- **Space-Saving Slim Profile:** With a wall clearance of just 1.2 inches, the mount keeps your TV close to the wall for a sleek, low-profile appearance.

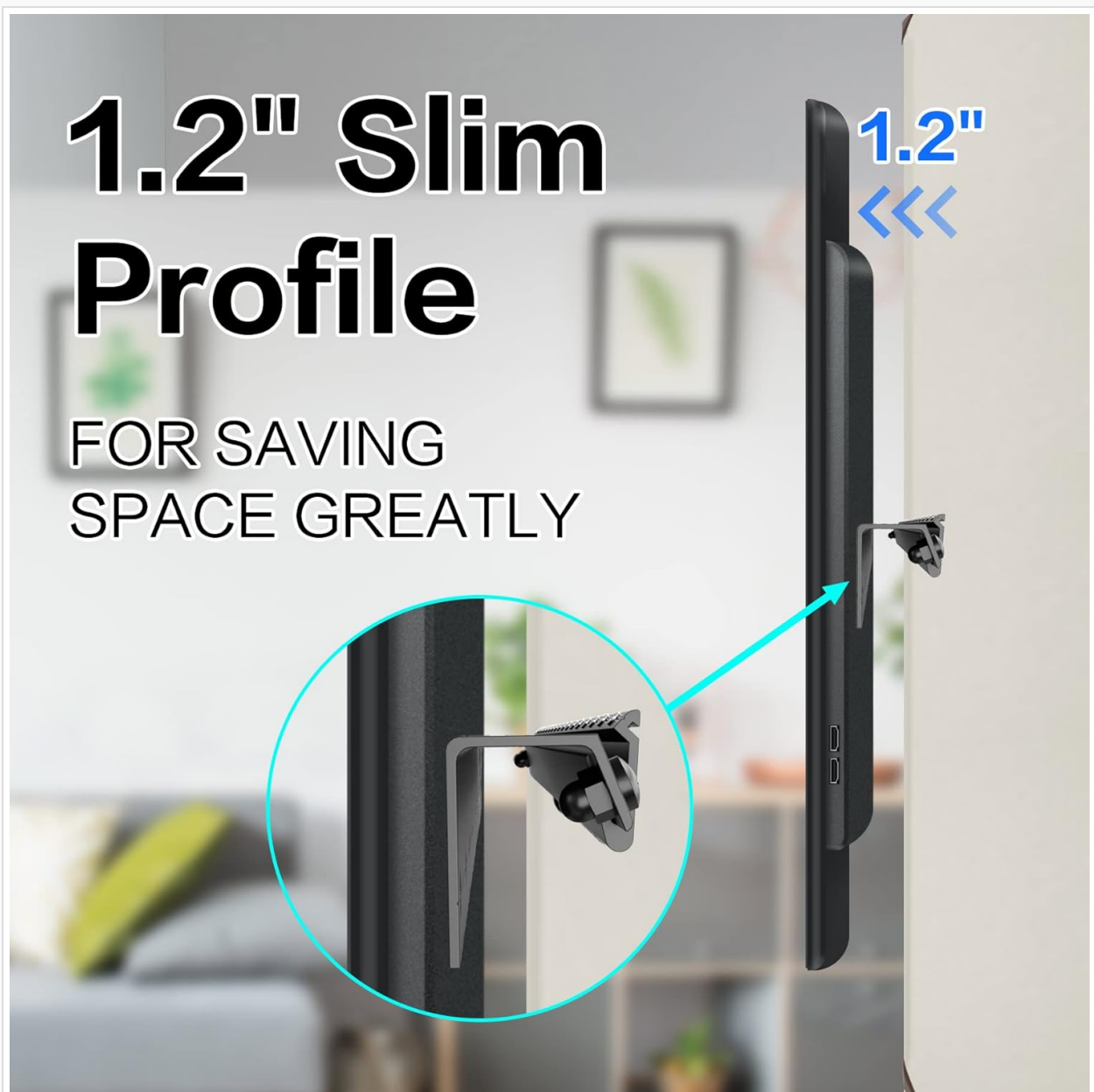


Image: Side view of a TV mounted with the KAMIWI mount, illustrating its ultra-slim 1.2-inch profile that saves space and provides a clean look.

- **Integrated Bubble Level:** A built-in level ensures accurate and straight installation.

Specifications

Attribute	Detail
Brand	KAMIWI
Model Number	KAMIWI-3A-22-55
Mounting Type	Wall Mount
Movement Type	Fixed
Material	Alloy Steel
Color	Black
Compatible TV Size	22 - 55 Inches
Maximum Load Capacity	100 lbs (45 kg)
VESA Compatibility	200x100mm to 400x400mm
Wall Clearance	1.2 inches
Item Weight	1.04 pounds
Package Dimensions	17.48 x 1.89 x 1.38 inches

Maintenance

The KAMIWI No Drill Drywall TV Mount requires minimal maintenance. Periodically check all connections to ensure they remain secure. Clean the mount with a soft, dry cloth. Avoid using abrasive cleaners or solvents that could damage the finish.

Troubleshooting

- **TV not level:** Ensure the wall plate was installed using the bubble level. If the TV is slightly off, carefully adjust its position on the wall plate.
- **Mount feels loose:** Re-check all nails to ensure they are fully inserted into the wall. Ensure the TV brackets are securely tightened to the TV.
- **TV does not fit:** Verify your TV's size and VESA pattern against the specifications in this manual. Ensure your TV's weight does not exceed 100 lbs.
- **Nails not going into wall:** This mount is designed for drywall/plasterboard. If you encounter a stud or a harder surface, this mount is not suitable for that location.

Warranty and Support

KAMIWI products are designed for durability and reliability. For specific warranty information or technical support, please refer to the product packaging or contact KAMIWI customer service directly through their official website or the retailer where the product was purchased. Please have your model number (KAMIWI-3A-22-55) ready when contacting support.

