

manuals.plus /

› [AIYATO](#) /

› [AIYATO Smart Bluetooth Tracker User Manual](#)

AIYATO AIYATO Key Finder

AIYATO Smart Bluetooth Tracker User Manual

Model: AIYATO Key Finder
For iOS Devices Only (iOS 14.5 or later)

INTRODUCTION

The AIYATO Smart Bluetooth Tracker is a compact and efficient device designed to help you locate your personal items quickly and easily. Utilizing Apple's Find My network, it offers both nearby Bluetooth tracking and global positioning capabilities. This manual provides detailed instructions for setting up, operating, maintaining, and troubleshooting your AIYATO tracker.



Figure 1: AIYATO Smart Bluetooth Trackers with iPhone displaying Find My app.

Key features include:

- **Find Nearby:** Use the Apple Find My app to ring your AIYATO tag with its built-in speaker when within Bluetooth range.
- **Find Far Away:** Track items globally using the extensive Apple Find My Network.
- **Lost Mode:** Enable Lost Mode in the Find My app to display your contact information to anyone who finds your tag using an NFC-enabled smartphone.
- **Durable Design:** IP67 water-resistant for protection against splashes and dust.
- **Replaceable Battery:** Features a replaceable cell battery with up to 2 years of life.

SETUP GUIDE

Follow these steps to connect your AIYATO Smart Bluetooth Tracker to your Apple Find My app:

1. **Power On:** Tear off the protective film from the tracker and long press the button on the device to power it on.
2. **Open Find My App:** On your iPhone or iPad (iOS 14.5 or later), open the Find My app. Ensure notifications are allowed for the app.
3. **Add New Item:** In the Find My app, navigate to the 'Items' tab. Tap the '+' icon and select 'Add New Item'.
4. **Select Other Supported Item:** Choose 'Other Supported Item' from the options to connect your AIYATO tracker.

The app will begin searching for nearby devices.

5. **Name Your Item:** Once detected, the app will prompt you to name your item and select an emoji to represent it. Tap 'Continue'.
6. **Register Tag:** Confirm the registration of your tag to your Apple ID. Tap 'Continue'.
7. **Finish Setup:** Tap 'Finish' to complete the setup process. Your AIYATO tracker is now linked to your Find My app.

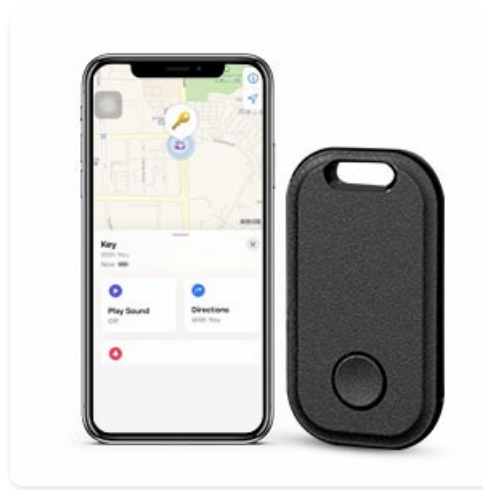


Figure 2: Tracker ready for pairing with the Find My app.

Video 1: Official guide on how to connect AIYATO tags with the Apple Find My app. This video demonstrates the step-by-step pairing process, from powering on the device to registering it within the Find My application on an iOS device.

OPERATING YOUR TRACKER

Finding Items Nearby

When your AIYATO tracker is within Bluetooth range of your iOS device, you can make it emit a sound to help you locate it. This is ideal for finding misplaced keys, wallets, or bags around your home or office.

- Open the Find My app on your iOS device.
- Go to the 'Items' tab and select your AIYATO tracker.
- Tap 'Play Sound'. The tracker will emit a series of beeps, allowing you to pinpoint its location.
- Tap 'Stop Sound' once you have found your item.

Find Your Keys

App will record the location of the product and you can search it according to the map



Figure 3: Using the Find My app to locate items nearby.

Finding Items Far Away (Global Positioning)

The AIYATO tracker leverages the vast Apple Find My network to help you locate items that are out of Bluetooth range. Millions of Apple devices worldwide anonymously and securely relay the location of your tracker to the Find My app.

- Open the Find My app on your iOS device.
- Go to the 'Items' tab and select your AIYATO tracker.
- The map will display the last known location of your tracker. If it's currently being detected by another Apple device, its real-time location will be shown.
- Tap 'Directions' to get navigation to your item's location using Apple Maps.



Figure 4: Global tracking of items using the Find My network.

Lost Mode

If your AIYATO tracker is lost, you can activate Lost Mode to increase the chances of its recovery.

- In the Find My app, select your lost AIYATO tracker.
- Scroll down and enable 'Lost Mode'.
- You will be prompted to enter a phone number and a message that can be viewed by anyone who finds your tag and scans it with an NFC-enabled smartphone.
- You will receive a notification when your item's location is updated.

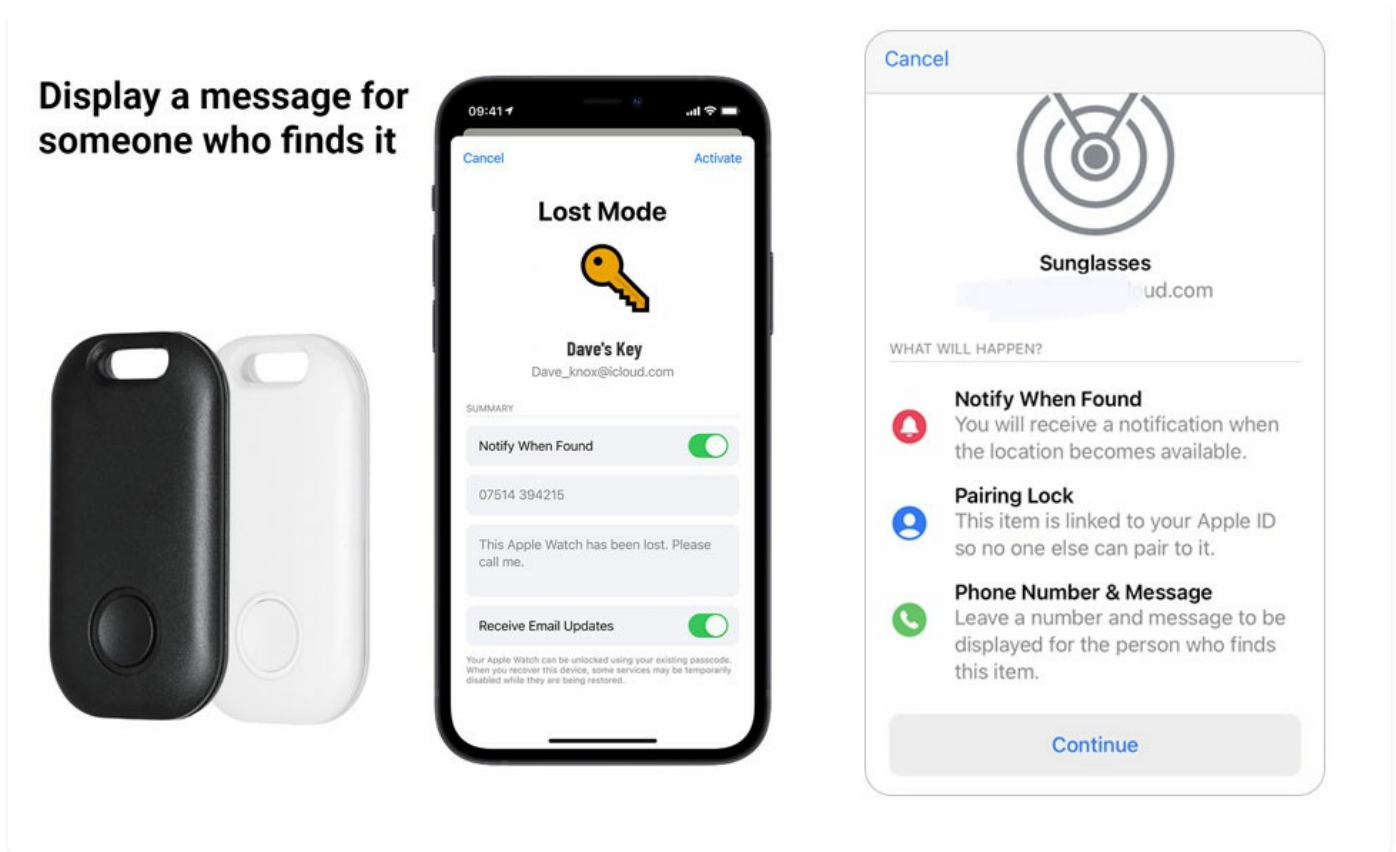


Figure 5: Activating Lost Mode to help recover your item.

Video 2: Overview of the AIYATO Smart Bluetooth Tracker's features, including its compatibility with Apple Find My and various use cases for tracking items like keys, bags, and pets.

MAINTENANCE

Battery Replacement

Your AIYATO tracker uses a replaceable CR2032 coin cell battery, which typically lasts up to 2 years. When the battery is low, you may receive a notification from the Find My app. To replace the battery:

1. Locate the small notch or opening on the side of the tracker.
2. Carefully open the casing using a small tool (e.g., a flathead screwdriver or a guitar pick).
3. Remove the old CR2032 battery.
4. Insert a new CR2032 battery with the positive (+) side facing up.
5. Close the casing securely, ensuring it clicks into place to maintain water resistance.

Mini Design

Easy to carry with other items



Built-in button battery up to 3 years of service life



Compatible with APPLE Find My app

Figure 6: Tracker dimensions and battery type.



Figure 7: Internal components and battery placement.

Water Resistance

The AIYATO tracker is rated IP67 water-resistant, meaning it can withstand submersion in up to 1 meter of water for 30 minutes. While it is designed to be durable against splashes and brief immersion, it is not recommended for prolonged underwater use. Ensure the battery compartment is securely closed after replacement to maintain water resistance.

TROUBLESHOOTING

Problem	Possible Cause	Solution
Tracker not connecting to Find My app.	Battery is dead or low. Tracker is not powered on. Bluetooth is off on iOS device.	Replace the battery. Long press the button to power on. Ensure Bluetooth is enabled on your iOS device.
Cannot hear the tracker's sound.	Tracker is out of Bluetooth range. Obstructions blocking sound.	Move closer to the tracker. Check for objects muffling the sound. Use the map feature for global positioning if out of range.
Location not updating in Find My app.	Tracker is not near any Apple devices. Tracker battery is dead.	Ensure the tracker is in an area where other Apple devices might pass by. Replace the battery.
Lost Mode contact info not appearing.	NFC not enabled on scanning smartphone. Lost Mode not activated correctly.	Ensure the scanning phone has NFC enabled and is properly positioned over the tracker. Verify Lost Mode is active in the Find My app.

For further assistance, please refer to the official user guide PDF or contact AIYATO customer support.

SPECIFICATIONS

Feature	Detail
Brand	AIYATO
Model	Smart Bluetooth Tracker
Compatibility	iOS Devices Only (iOS 14.5 or later)
Connectivity	Bluetooth, Apple Find My Network
Battery Type	1 x CR2032 (included, replaceable)
Average Battery Life	Up to 2 years
Water Resistance	IP67
Dimensions (LxWxH)	2.09 x 1.14 x 0.16 inches (5.3 x 2.9 x 0.4 cm)
Weight	1.76 ounces (50 grams)

Feature	Detail
Material	Polycarbonate (PC), Plastic, Acrylonitrile Butadiene Styrene (ABS)

WARRANTY AND SUPPORT

For detailed warranty information and customer support, please refer to the official AIYATO website or the user guide PDF provided with your product. You can also find additional resources and FAQs on the product's Amazon listing page.

Official User Guide (PDF): [Download Here](#)

For any technical issues or inquiries not covered in this manual, please contact AIYATO customer service directly.