

SUPERFLO TM-10

SUPERFLO TM-10 600W Macerating Upflush Toilet System

Model: TM-10

1. INTRODUCTION

This manual provides detailed instructions for the safe and efficient installation, operation, and maintenance of your SUPERFLO TM-10 600W Macerating Upflush Toilet System. Please read this manual thoroughly before installation and use, and retain it for future reference.

2. SAFETY INFORMATION

Always prioritize safety during installation and operation. Ensure the power supply is disconnected before performing any maintenance or installation procedures. Consult a qualified plumber or electrician if you are unsure about any steps. Do not operate the unit if any part is damaged. Keep children away from the unit during operation.

3. PACKAGE CONTENTS

Your SUPERFLO TM-10 Macerating Upflush Toilet System package includes the following components:

- 600W Macerating Pump
- Round Toilet Bowl
- Toilet Lid
- Water Tank
- Tank Flushing Accessories
- Extension Tube
- 3 x Elbows for Outlet (32mm, 40mm, 38mm)

- 2 x Sleeves for Side Inlets (40mm, 46mm)
- 4 x Stainless Steel Clips for Sleeves and Outlet Elbows
- 2 x Stainless Steel Screws for Floor Fittings
- 2 x Plugs for Inlets

4. SPECIFICATIONS

Feature	Specification
Model Number	TM-10
Power	600W
Color	White
Product Dimensions (D x W x H)	19.6" x 14.5" x 30.7"
Item Weight	88 Pounds
Material	Stainless Steel (blades), Polypropylene (seat)
Installation Type	Floor Mounted
Max Vertical Pumping Distance	32.8 feet (approx. 10 meters)
Max Horizontal Pumping Distance	263 feet (approx. 80 meters)
Sewage Outlet Size	0.9/1.1/1.25/1.7 Inches (various elbows included)
Water Inlet Size	1.49 Inches (flexible connection)

For detailed dimensions, refer to the diagram below:



Figure 4.1: Product Dimensions

5. SETUP AND INSTALLATION

The SUPERFLO TM-10 Macerating Upflush Toilet System is designed for convenient installation without the

need for extensive concrete cutting, making it ideal for basements or areas where traditional plumbing is challenging.

5.1. General Placement and Connections

The system can be installed directly connected to the toilet or behind a wall for a concealed look. Ensure adequate space for maintenance access.



Figure 5.1: Installation Options

5.2. Connecting the Macerating Pump to the Toilet

Connect the macerating pump to the rear outlet of the toilet bowl using the provided flexible connector and stainless steel clamps. Ensure a secure, watertight seal by tightening the clamps with a screwdriver.



Figure 5.2: Toilet to Pump Connection

5.3. Waste Outlet Connection

Connect the waste outlet pipe from the macerating pump. The system supports various outlet sizes (0.9/1.1/1.25/1.7 inches) and can pump wastewater up to 32.8 feet vertically and 263 feet horizontally. When routing the outlet pipeline, it is recommended to go vertically first and then horizontally. Avoid using right-angle elbows if possible to ensure optimal flow.



Outlet pipeline is recommended to go vertically first and then horizontally.
Don't use right angle elbow if possible.

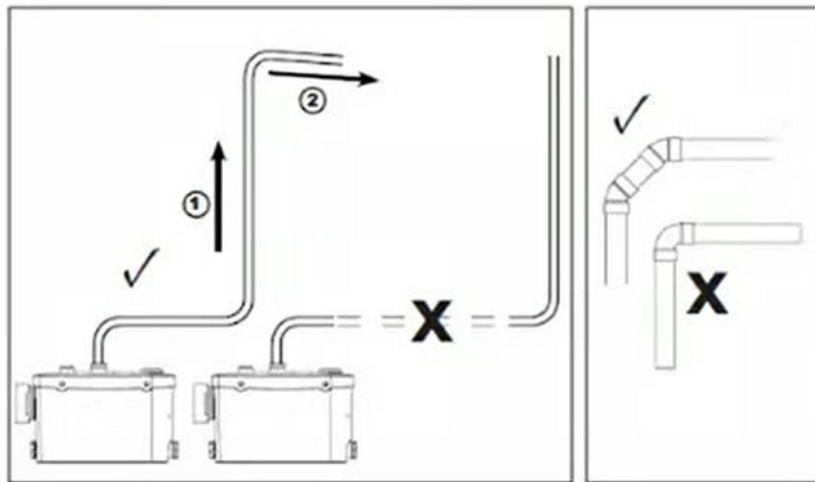


Figure 5.3: Outlet Pipeline Routing

5.4. Additional Water Inlets

The macerating pump features multiple water inlets (1.49 inches) for connecting other fixtures such as showers, kitchen sinks, or washing machines. Ensure these connections are properly sealed. For horizontal drainage from other fixtures, ensure the pipeline has a minimum 3% slope towards the macerating pump.



Figure 5.4: Multiple Fixture Connections and Pumping Distances

5.5. Water Supply Connection

Connect the toilet's water tank to your water supply using a 7/8 inch water supply pipe. After all connections are made, perform a water test to ensure proper functionality and check for leaks.

6. OPERATING INSTRUCTIONS

The SUPERFLO TM-10 system operates automatically. When wastewater from the connected fixtures enters the macerating pump, the water pressure activates an internal air switch. This signal is then transferred to the PCB, which drives the motor. The powerful 600W motor, equipped with ultra-fine blades, rapidly shreds waste and pumps it through the sewage pipe.

6.1. Odor Prevention

The macerating pump includes an activated carbon filter to effectively prevent peculiar odors. It is optional to connect the vent valve to your home's venting system for enhanced odor control.

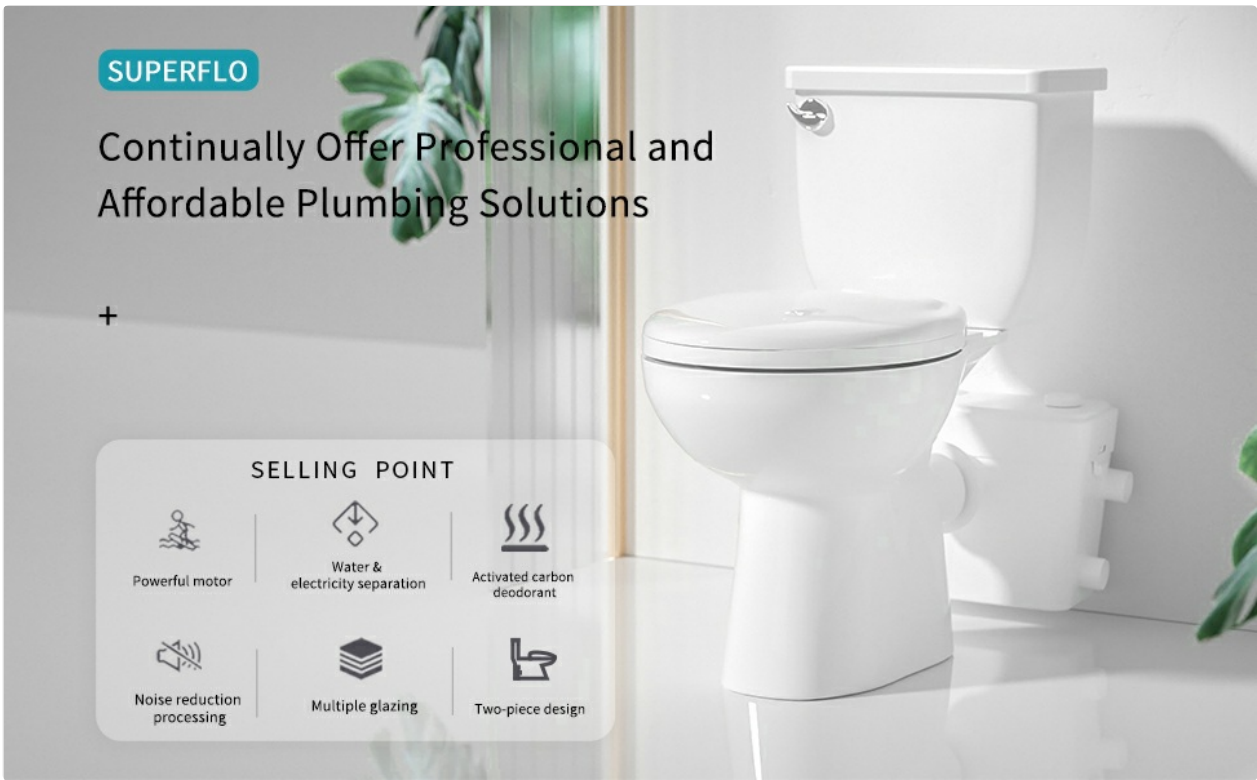


Figure 6.1: Activated Carbon Filter for Odor Prevention

6.2. Quiet Operation

The system incorporates triple noise reduction methods for quiet operation, including a buffering base at the motor bottom, fixing screws for the macerator, and seamless production for the machine. This design aims to minimize operational noise.



Figure 6.2: Noise Reduction Methods

6.3. Mute Toilet Seat

The toilet seat features a buffer design to prevent strong impact when lowered, ensuring stable and quiet operation and extending the product's service life.

MUTE TOILET SEAT

BUFFER DESIGN, AVOID STRONG IMPACT WHEN PUT DOWN THE TOILET COVER, STABLE AND NO NOISE, AND EFFECTIVELY IMPROVE THE SERVICE LIFE OF PRODUCTS



Figure 6.3: Mute Toilet Seat

7. MAINTENANCE

The glazed material used in the toilet bowl allows for easy cleaning with minimal effort. Regular cleaning will help maintain hygiene and appearance.

7.1. Impeller Inspection

The macerating pump is equipped with a non-blocking blade design for efficient shredding. Periodically inspect the impeller for any foreign objects or blockages to ensure optimal performance.



8. TROUBLESHOOTING

If the macerating pump encounters a blockage, an alarm on the PCB will sound after 3 minutes to inform the user that maintenance is required. This feature helps prevent damage to the motor.

8.1. Clearing Blockages

To clear a blockage:

1. Disconnect power to the unit.
2. Open the repair panel on the macerating pump.
3. Carefully remove any foreign objects or blockages from the impeller area.
4. Close the repair panel securely and reconnect power.

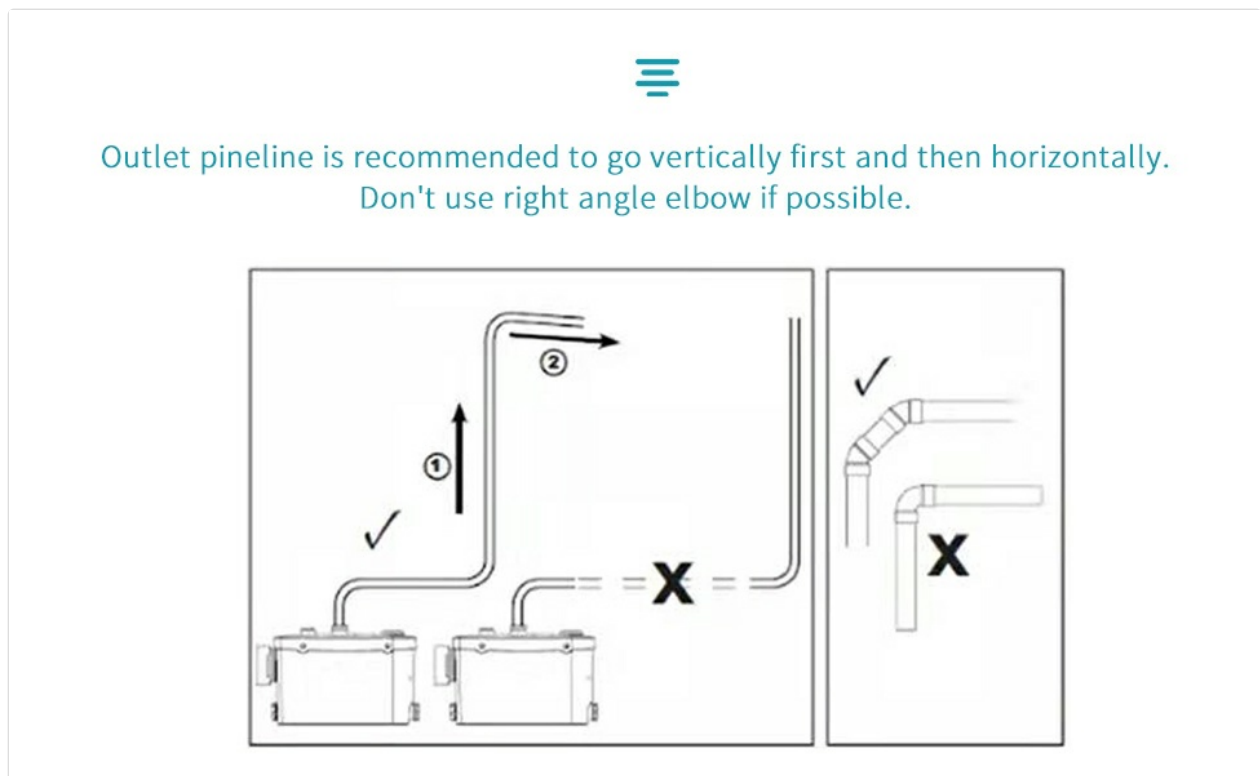


Figure 8.1: Troubleshooting Blockages

9. WARRANTY AND SUPPORT

For warranty information and customer support, please refer to the product packaging or contact SUPERFLO customer service directly. Keep your purchase receipt as proof of purchase.