

Manuals+

[Q & A](#) | [Deep Search](#) | [Upload](#)

Manuals.plus /

› [Rszfnjxry](#) /

› Rszfnjxry Fast Battery Charger Hub for Insta360 X3 User Manual

Rszfnjxry X3_LSC

Rszfnjxry Fast Battery Charger Hub for Insta360 X3 User Manual

Model: X3_LSC

INTRODUCTION

This manual provides detailed instructions for the safe and efficient use of your Rszfnjxry Fast Battery Charger Hub for Insta360 X3. Please read this manual thoroughly before use and retain it for future reference. This charger hub is designed specifically for Insta360 X3 batteries (batteries not included) and also functions as a storage case for batteries and micro SD cards.

PRODUCT OVERVIEW

The Rszfnjxry Fast Battery Charger Hub is a compact and portable solution for charging and storing your Insta360 X3 batteries. It features intelligent fast charging, safety protections, and clear LED indicators.



Image 1: The Rszfnjxy Fast Battery Charger Hub shown with its included USB Type-C charging cable. The hub is open, revealing slots for batteries and micro SD cards.

Key Features:

- **Storage Box Design:** Functions as both a battery charger and a storage case for Insta360 X3 batteries and micro SD cards.
- **Intelligent Fast Charging:** USB Type-C port supports fast charging, reaching up to 80% in approximately 35 minutes. It intelligently switches to trickle charge mode once 80% is reached to fully charge the battery.
- **Safety Protection:** Equipped with comprehensive protection against overcharging, short circuits, over-temperature, over-current, and over-voltage.
- **LED Intelligent Indicator:** Clear LED lights display the charging status at a glance.
- **Compact and Portable:** Designed for easy carrying, making it ideal for travel and on-the-go use.

SETUP

Before using your charger hub, ensure you have a compatible power adapter. A 12V/2A power adapter is recommended for optimal fast charging performance.

1. **Unpack the Charger:** Carefully remove the charger hub and USB Type-C cable from its packaging.
2. **Connect Power:** Insert one end of the provided USB Type-C cable into the charging port on the charger hub. Connect the other end to a compatible USB power adapter (not included). The charger requires external power to operate.
3. **Power On Indicator:** Once connected to power, the blue LED light on the charger hub will illuminate, indicating that the device is powered on and ready for use.

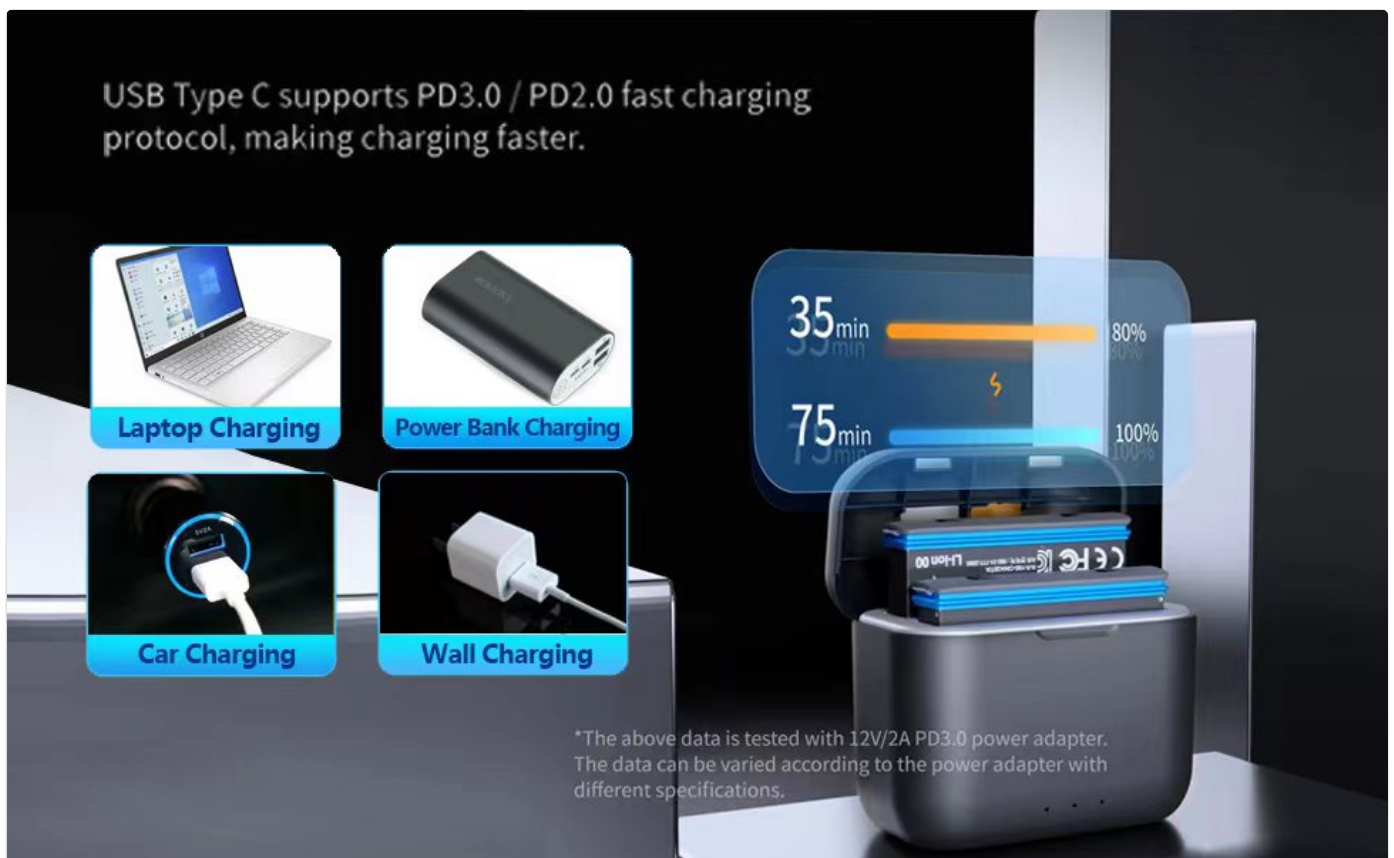


Image 2: The charger hub can be powered by various USB Type-C sources such as a laptop, power bank, car charger, or a standard wall adapter.

OPERATING INSTRUCTIONS

Charging Batteries:

- 1. Insert Batteries:** Open the lid of the charger hub. Carefully insert up to two Insta360 X3 batteries into the designated slots. Ensure the batteries are correctly oriented according to the markings inside the slots.
- 2. Monitor Charging Status:** The LED indicators on the front of the charger hub will change color to reflect the charging status of each battery. Refer to the "LED Indicator Guide" below for details.
- 3. Charging Completion:** Once a battery is fully charged, its corresponding LED indicator will turn solid green. The charger will automatically stop charging to prevent overcharging.

Portable Fast Charge Box for Insta360 X3

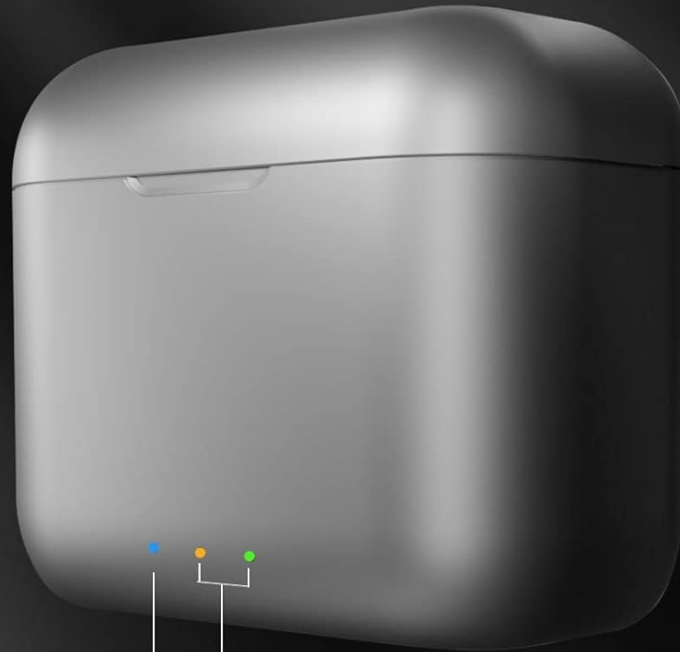
Compact Size
Powerful Function



Image 3: The charger hub with two Insta360 X3 batteries inserted, demonstrating its compact size and powerful function alongside an Insta360 X3 camera.

LED Indicator Guide:

Simple and Clear Light Indicator



Power Indicator:

- Blue Light on: power-on
- Light off: power-off

Charging Light Indicator:

- Flashing Orange: charging, battery level <80%
- Flashing Green: charging, $80\% \leq$ battery level <100%
- Solid Green: battery level =100%
- Flashing Red: malfunction

Image 4: A detailed diagram illustrating the meaning of each LED light color and state on the charger hub.

Power Indicator (Left LED):

- **Blue Light On:** Power is connected and the device is on.
- **Light Off:** Power is disconnected or the device is off.

Charging Light Indicator (Middle and Right LEDs):

- **Flashing Orange:** Battery is charging, battery level is less than 80%.
- **Flashing Green:** Battery is charging, battery level is between 80% and less than 100%.
- **Solid Green:** Battery level is 100% (fully charged).
- **Flashing Red:** Malfunction or error detected.

Storing Micro SD Cards:

The charger hub includes dedicated slots for storing micro SD cards, providing a convenient and secure way to keep your memory cards with your charging setup.



Image 5: A close-up showing the integrated micro SD card storage slots within the charger hub's lid.

MAINTENANCE

- **Cleaning:** Use a soft, dry cloth to clean the exterior of the charger hub. Do not use liquid cleaners or solvents. Ensure no dust or debris accumulates in the charging ports or battery slots.
- **Storage:** When not in use, store the charger hub in a cool, dry place away from direct sunlight and extreme temperatures. Keep the lid closed to protect the battery and SD card slots from dust and foreign objects.
- **Handling:** Avoid dropping the charger hub or subjecting it to strong impacts, as this may damage internal components.

TROUBLESHOOTING

Problem	Possible Cause	Solution
Charger not powering on (Blue LED off)	No power connection or faulty cable/adaptor.	Ensure the USB Type-C cable is securely connected to both the charger and a working power source. Try a different USB Type-C cable or power adapter.
Batteries not charging (Orange/Green LED not flashing)	Batteries not inserted correctly or faulty batteries.	Re-insert the batteries, ensuring they are properly seated in their slots. Check if the batteries are damaged. Ensure the charger is powered on.
Flashing Red LED indicator	Malfunction, over-temperature, or short circuit.	Remove the batteries and disconnect power. Wait a few minutes, then reconnect. If the issue persists, the charger or battery may be faulty. Do not continue use if the red light persists.
Slow charging speed	Insufficient power input from adapter.	Use a power adapter that provides 12V/2A output for optimal fast charging. Charging time varies depending on power adapter specifications.

SPECIFICATIONS

- **Model Number:** X3_LSC

- **Input:** 12V/2A (Recommended)
- **Output Voltage:** 3.6 Volts
- **Product Dimensions:** 3.15 x 3.15 x 1.57 inches (approx. 8 x 8 x 4 cm)
- **Item Weight:** 3.53 ounces (approx. 100 grams)
- **Color:** Grey
- **Manufacturer:** Rszfnjxry
- **Country of Origin:** China

WARRANTY AND SUPPORT

For warranty information or technical support, please contact the manufacturer, Rszfnjxry, directly through their official channels or the retailer from whom you purchased the product. Please retain your proof of purchase for any warranty claims.

You can visit the Rszfnjxry Store on Amazon for more information: [Rszfnjxry Store](#)