

## GOWIN GOWIN Kitchen FAUCET

# GOWIN Kitchen Faucet with Side Sprayer User Manual

Model: GOWIN Kitchen FAUCET (Brushed Nickel-1)

## INTRODUCTION

---

Thank you for choosing the GOWIN Kitchen Faucet with Side Sprayer. This high-quality faucet is designed to provide reliable performance and enhance the functionality and aesthetics of your kitchen. Featuring a durable stainless steel construction, a convenient side sprayer, and easy-to-use controls, this faucet is built for daily use. Please read this manual thoroughly before installation and operation to ensure proper use and maintenance.



Image: The GOWIN Kitchen Faucet with Side Sprayer, showcasing its brushed nickel finish and overall design.

## PRODUCT FEATURES

---

- **Durable Material:** Constructed with SUS 304 stainless steel body and brushed nickel finish, providing resistance against tarnish, corrosion, and rust for long-lasting use.
- **Lead-Free Water Quality:** Equipped with a high-quality ceramic cartridge tested for 500,000 cycles, ensuring drip-free performance. The bubbler features plastic filter nets and 304 stainless steel housings for easy cleaning and replacement.
- **8 Inch Centerset Design:** Modern two-handle temperature control, with handles rotating 90° forward for hot and cold water. Suitable for kitchen sinks with 3 or 4 holes.
- **High Arc 360° Swivel Spout:** Allows for easy movement around the sink, simplifying kitchen cleaning tasks.
- **Integrated Side Sprayer:** The pull-out sprayer extends up to 35 inches, and the thumb-pressed spray head delivers a high-pressure directional power spray. The ABS hose can withstand temperatures up to 200°C.

# KITCHEN FAUCET WITH SIDE SPRAY



Image: Detailed diagram highlighting key features such as 360° swivel spout, brushed nickel finish, 304 stainless steel body, two-handle operation, extra wide base, and the side sprayer with detachable bubbler.

## PACKAGE CONTENTS

Please verify that all components are included in your package:

- Kitchen Sink Faucet (Main Unit)
- Side Sprayer (18-inch hose)
- Water Hoses (35-inch)
- Mounting Hardware
- Installation Manual (This document)

## SPECIFICATIONS

Feature	Specification
---------	---------------

Feature	Specification
Brand	GOWIN
Model Name	GOWIN Kitchen FAUCET
Mounting Type	Deck Mount
Finish Type	Brushed Nickel
Material	Stainless Steel
Number of Handles	2
Hole Count	3 or 4
Special Feature	Side Sprayer
Handle Type	Lever
Installation Type	Centerset
Maximum Flow Rate	1.8 Gallons Per Minute
Spout Height	9 Inches
Spout Reach	8.2 Inches
Hose Length (Sprayer)	35 Inches
Product Dimensions	8.27"D x 10"W x 15.58"H
Item Weight	0.634 ounces (approx. 0.02 kg)

## Safety Information

Please observe the following safety precautions during installation and use:

- Always turn off the main water supply before beginning any installation or maintenance.
- Wear appropriate personal protective equipment, such as safety glasses and gloves.
- Ensure all connections are secure and leak-free before restoring water supply.
- Do not overtighten connections, as this may damage components.
- If you are unsure about any step, consult a qualified plumber.

## Installation (Setup)

This faucet is designed for 3 or 4-hole sink installations. Follow these general steps for installation:

1. **Prepare the Sink:** Ensure the sink holes are clean and clear. The maximum counter top thickness without a deck plate should be 1.38 inches (35mm). Recommended hole size is 1.26 inches (32mm) to 1.38 inches (35mm).

2. **Install Faucet Body:** Place the main faucet body and deck plate onto the sink holes. Secure it from underneath the sink using the provided mounting hardware.
3. **Install Side Sprayer:** Insert the side sprayer into its designated hole. Connect the sprayer hose to the appropriate connection on the main faucet body.
4. **Connect Water Hoses:** Attach the hot and cold water supply hoses to the corresponding inlets on the faucet body. Connect the other ends of the hoses to your hot and cold water supply lines. Ensure a secure, leak-free connection. The water hoses are 35 inches long with 3/8" Compression and 1/2" IPS connections.
5. **Test for Leaks:** Slowly turn on the main water supply and check all connections for any leaks. Operate the faucet and sprayer to ensure proper water flow and function.

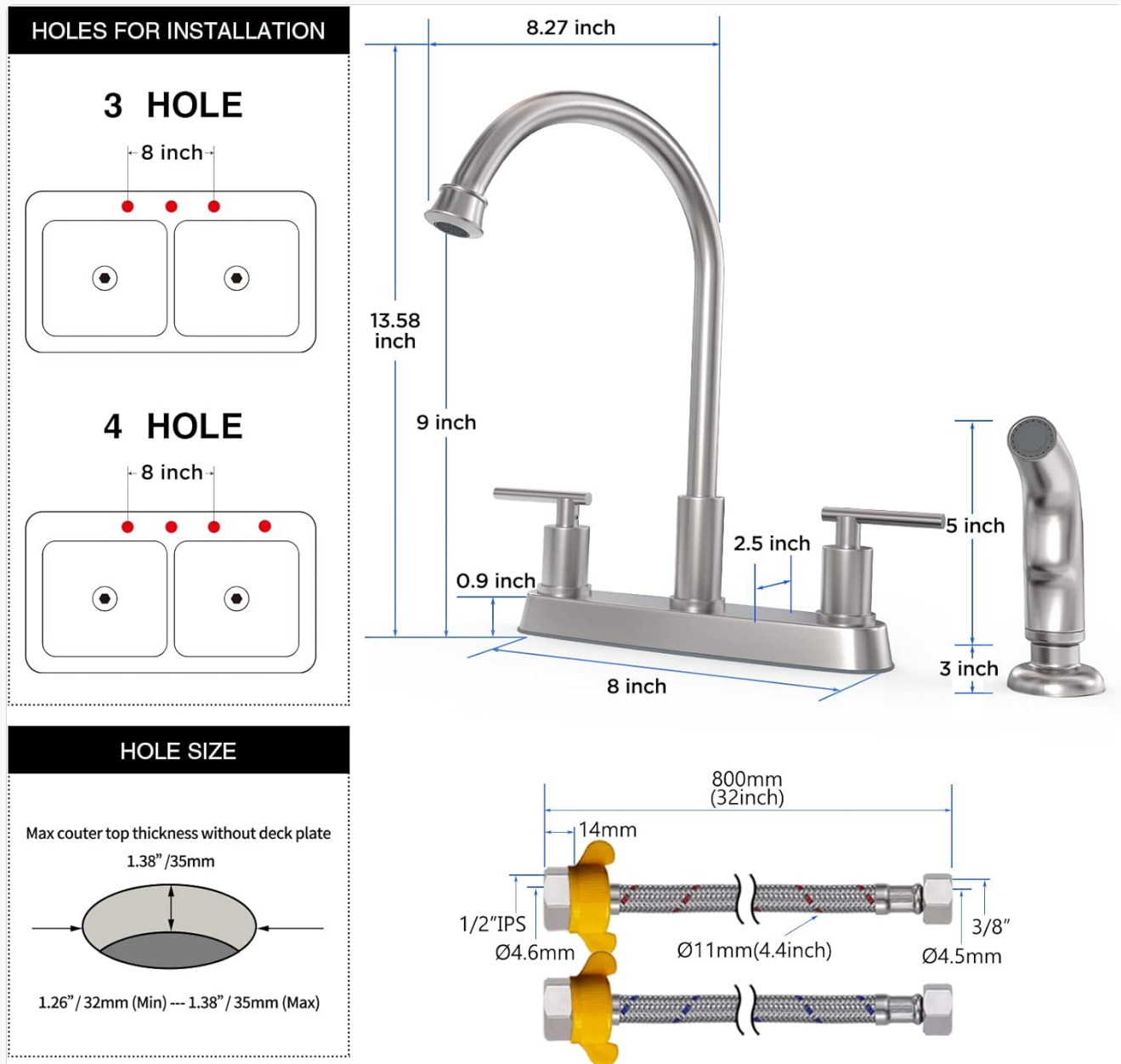


Image: Visual guide for sink hole requirements (3-hole or 4-hole) and detailed dimensions of the faucet and water hoses for proper installation.

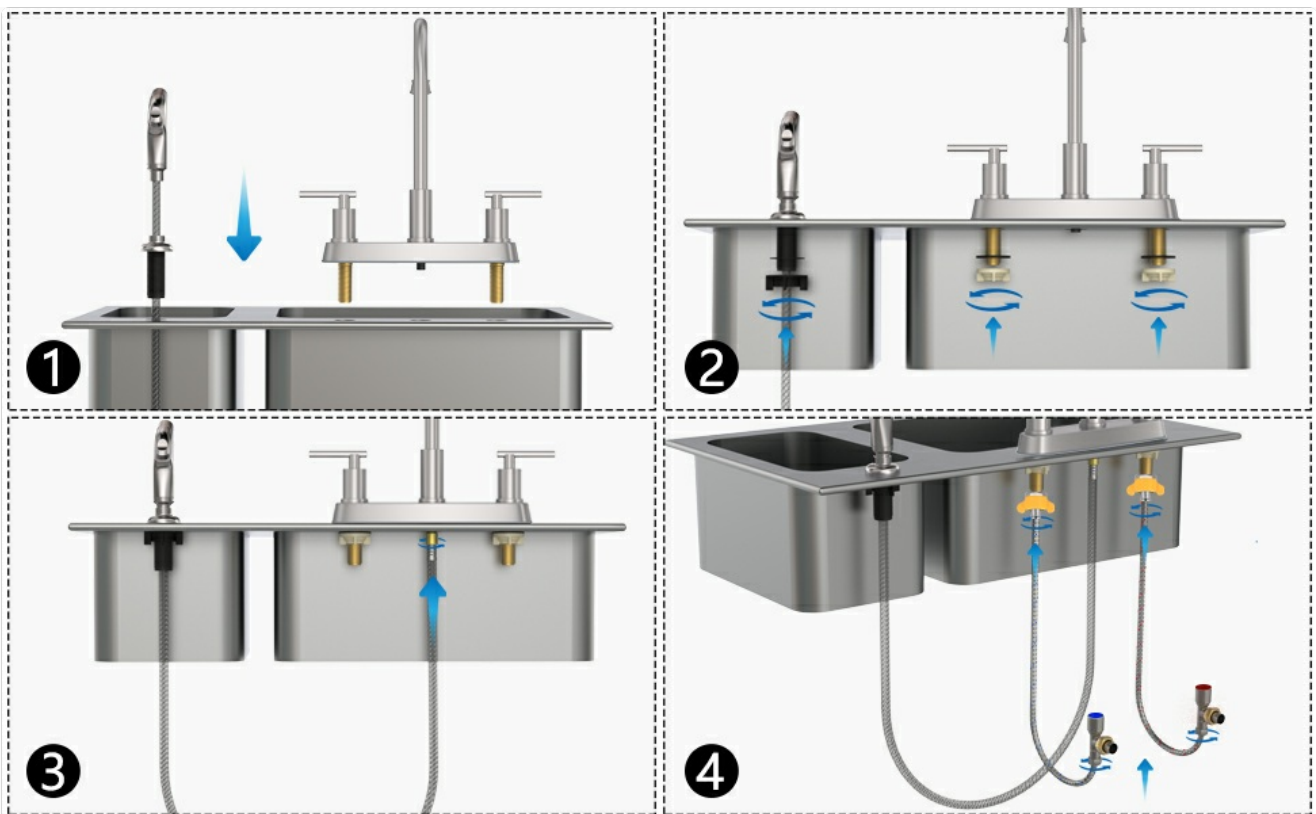


Image: Step-by-step diagram showing the process of installing the faucet and connecting the water lines to the sink.

## OPERATION

Operating your GOWIN Kitchen Faucet is straightforward:

- **Water Flow Control:** Use the two lever handles to control the water flow and temperature. Rotate the left handle forward 90° for hot water and the right handle forward 90° for cold water. Adjust both handles to achieve your desired temperature.
- **Spout Swivel:** The high arc spout can swivel 360°, allowing you to direct water flow to different areas of your sink or to fill large pots outside the basin.
- **Side Sprayer Function:** To use the side sprayer, simply lift it from its holder. Press the thumb-activated button on the sprayer head to activate the high-pressure directional spray. Release the button to return to normal flow from the main spout (if applicable, or turn off the main faucet).



Image: The faucet demonstrating its 360-degree swivel capability and the clear labeling for hot and cold water control on the handles.



Superior heat resistant PPA, the max temperature can be up to 200°C



Image: A hand demonstrating the use of the side sprayer, highlighting its extended reach with a 45-inch hose and the thumb-pressed spray head.

## MAINTENANCE

To keep your GOWIN Kitchen Faucet in optimal condition and maintain its brushed nickel finish, follow these maintenance tips:

- **Regular Cleaning:** Clean the faucet regularly with a soft, damp cloth and mild soap. Avoid abrasive cleaners, harsh chemicals, or scouring pads, as these can damage the finish.
- **Spot Removal:** For water spots or mineral deposits, use a solution of equal parts white vinegar and water. Apply with a soft cloth, let it sit for a few minutes, then rinse thoroughly with clean water and dry.
- **Aerator Cleaning:** If water flow becomes restricted, the aerator (bubbler) at the end of the spout may be clogged. Unscrew the aerator, clean any debris, and rinse it before reattaching. The bubbler is detachable for easy cleaning.
- **Sprayer Maintenance:** Periodically check the sprayer hose for kinks or damage. Ensure the sprayer head is free of mineral buildup.



# TROUBLESHOOTING

If you encounter any issues with your faucet, refer to the table below for common problems and solutions:

Problem	Possible Cause	Solution
Low Water Flow	Clogged aerator; partially closed shut-off valve; kinked supply line.	Clean or replace aerator; fully open shut-off valves; straighten supply lines.
Faucet Leaks from Spout	Worn ceramic cartridge; debris in cartridge.	Replace ceramic cartridge; clean cartridge.
Leaks at Base of Faucet	Loose mounting nuts; worn O-rings.	Tighten mounting nuts; replace O-rings.
Sprayer Not Working Properly	Clogged spray holes; kinked sprayer hose.	Clean spray holes; straighten hose.
Water Temperature Issues	Incorrect hot/cold supply connections; issues with water heater.	Verify supply line connections; check water heater settings.

If the problem persists after attempting these solutions, please contact GOWIN customer service for further assistance.


# WARRANTY & SUPPORT






The GOWIN Kitchen Faucet comes with a limited warranty. Please refer to the warranty card included in your package for specific terms and conditions. This warranty covers manufacturing defects under normal use and service.

For technical support, replacement parts, or any questions regarding your GOWIN product, please email our service team. We are committed to providing a satisfactory answer within 24 hours.

Thank you for choosing GOWIN. We appreciate your business and are dedicated to ensuring your satisfaction.

## Related Documents - GOWIN Kitchen FAUCET

<div>  <div>Gowin Complex Multiplier IP 用户指南</div> <div>REVISED 11.2023-07-04</div></div>	<div><a href="#">Gowin Complex Multiplier IP User Guide</a> User guide for the Gowin Complex Multiplier IP, detailing its features, port descriptions, timing, configuration, and reference design. This IP is designed for complex number multiplication.</div>
--	--

<div>  <div>Gowin_EMPU(GW1NS-4C) IDE Software Reference Manual</div><div>9701000-1.0.0_000000</div></div>	<p><a href="#">Gowin_EMPU(GW1NS-4C) IDE Software: Comprehensive Reference Manual for Development</a></p> <p>This reference manual provides detailed guidance on using the Gowin_EMPU(GW1NS-4C) IDE software, including setup and usage with ARM Keil MDK and GOWIN MCU Designer for embedded system development.</p>
<div>  <div>Gowin Virtual Input Output (GVIO) ツール ユーザガイド</div><div>9701000-1.0.0_000000</div></div>	<p><a href="#">Gowin Virtual Input Output Tool User Guide</a></p> <p>User guide for the Gowin Virtual Input Output (GVIO) tool, a digital signal dynamic debugging tool for FPGAs. Covers configuration, usage, and joint debugging with GAO.</p>
<div>  <div>Gowin XCORR IP ユーザーガイド</div><div>9701000-1.0.0_000000</div></div>	<p><a href="#">Gowin XCORR IP User Guide</a></p> <p>User guide for the Gowin XCORR IP, detailing its features, configuration, and usage for cross-correlation operations in FPGA designs. Covers input parameters, port descriptions, timing, and resource utilization.</p>
<div>  <div>Gowin Software Tcl Commands User Guide</div><div>9701000-1.0.0_000000</div></div>	<p><a href="#">Gowin Software Tcl Commands User Guide</a></p> <p>This user guide provides a comprehensive reference for the Tcl commands used with Gowin Software, detailing command-line interface operations for efficient project management and FPGA design flows, including command syntax, parameters, and examples.</p>
<div>  <div>Gowin 云源软件 用户指南</div><div>9701000-1.0.0_000000</div></div>	<p><a href="#">Gowin 云源软件 - GOWIN</a></p> <p>for Gowin . This document provides comprehensive instructions and details on using the Gowin Yunyuan software, including its interface, project management, integrated tools, output files, and Tcl commands. It covers version information and support details.</p>