

## Casaria Eloise

# Casaria Eloise Bedside Table with LED Lighting Instruction Manual

Model: Eloise | Brand: Casaria

## 1. INTRODUCTION AND OVERVIEW

The Casaria Eloise bedside table is designed to complement various bedroom decors. It features three drawers for storage, chrome-look handles, and is suitable for use with box spring beds due to its 54 cm height. An integrated cable grommet facilitates device charging, and an optional LED drawer light activates automatically via a distance sensor. For enhanced stability, the unit includes provisions for wall mounting.



Image: Two Casaria Eloise bedside tables with drawers partially open, illustrating the product's design and storage capacity.



Image: A single Casaria Eloise bedside table positioned beside a bed, demonstrating its integration into a bedroom environment.

## 2. SAFETY INSTRUCTIONS

---

- Ensure all components are securely fastened during assembly.
- To prevent tipping, especially in households with children, attach the bedside table to the wall using the provided anti-tip hardware.
- Do not exceed the maximum load capacity of 25 kg for the entire unit and 5 kg per drawer.
- Keep small parts away from children during assembly.

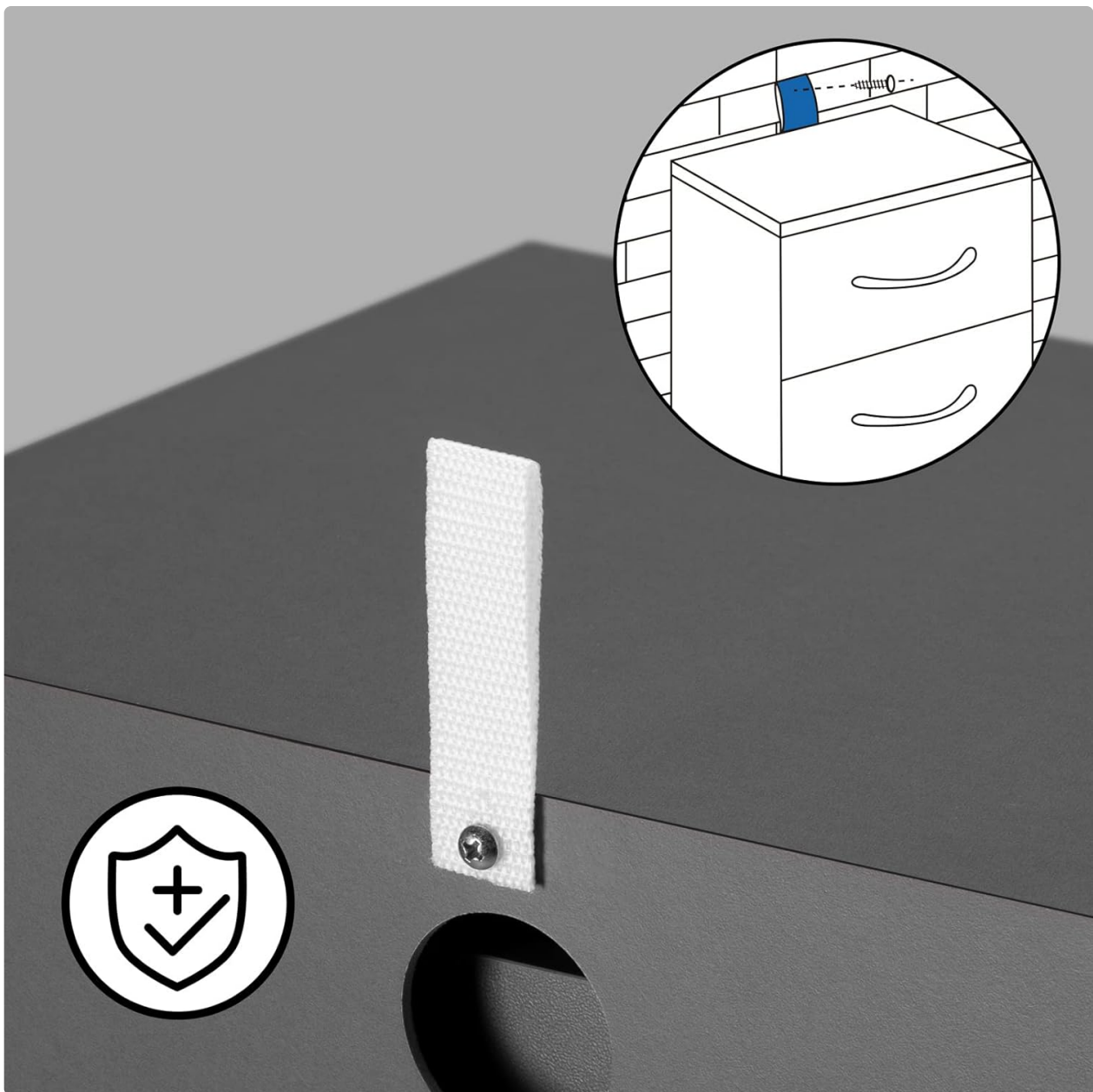


Image: Illustration detailing the wall mounting procedure for the bedside table, emphasizing safety against tipping.

### 3. PACKAGE CONTENTS

---

Upon unpacking, verify that all items are present:

- Eloise Bedside Table components (specific to your chosen configuration)
- Assembly hardware (screws, dowels, handles, drawer slides)
- Anti-tip hardware for wall mounting
- Installation instructions manual
- LED lighting unit (if selected)

### 4. SETUP AND ASSEMBLY

---

The Casaria Eloise bedside table is designed for straightforward assembly. Follow the detailed steps provided in the included installation instructions. Basic household tools (e.g., screwdriver, hammer) may be required.

1. Unpack all components and verify against the package contents list.

2. Assemble the main frame of the bedside table according to the diagrams.
3. Install the drawer slides and assemble the drawers.
4. Attach the chrome-look handles to the drawers.
5. If applicable, install the LED lighting unit in the designated drawer.
6. Position the bedside table in its desired location.
7. Secure the bedside table to the wall using the anti-tip hardware as described in the safety instructions.

## 5. OPERATING INSTRUCTIONS

---

### 5.1 LED Drawer Lighting (Optional)

If your model includes LED drawer lighting, it operates automatically. A distance sensor detects when the drawer is opened and illuminates the interior. The light will turn off when the drawer is closed. Ensure batteries (not included) are correctly installed if your model requires them.



Image: Interior view of an open drawer, illustrating the storage capacity and the area where LED lighting would activate.

### 5.2 Cable Management

The bedside table features an integrated cable grommet located at the back. This allows you to route charging cables for electronic devices, such as smartphones, from the top surface or inside a drawer, keeping cables tidy and out of sight.



Image: Detailed view of the cable grommet, demonstrating how a charging cable can be discreetly managed.

## 6. MAINTENANCE

---

To maintain the appearance and longevity of your Casaria Eloise bedside table:

- Clean surfaces with a damp cloth. Avoid abrasive cleaners or harsh chemicals, which can damage the finish.
- Wipe spills immediately to prevent staining.
- Periodically check all screws and fittings to ensure they remain tight.
- Avoid placing extremely hot or cold items directly on the surface; use coasters or protective mats.

## 7. TROUBLESHOOTING

---

This section addresses common issues you might encounter:

- **Drawers not sliding smoothly:** Check that drawer slides are correctly installed and free of obstructions. Ensure all screws are tightened.
- **LED light not working:** If your model has LED lighting, verify that batteries (if required) are new and correctly inserted. Check for any loose connections.
- **Table feels unstable:** Ensure all assembly screws are fully tightened. Confirm the anti-tip hardware is securely attached to both the table and the wall.
- **Surface damage:** For minor scratches, furniture repair kits may be used. For significant damage, contact customer support.

## 8. SPECIFICATIONS

| Feature                  | Specification                                       |
|--------------------------|---|
| Model Name               | Eloise  |
| Dimensions (H x D x W)   | 54 cm x 39 cm x 28 cm (21.26"W x 15.35"D x 11.02"H) |
| Material                 | 100% MDF (Engineered Wood)                          |
| Color                    | Anthracite  |
| Total Load Capacity      | 25 kg   |
| Load Capacity per Drawer | 5 kg  |
| Volume per Drawer        | 5 litres  |
| Drawer Dimensions        | 32 cm x 23.7 cm x 9 cm                              |
| Item Weight              | 24 Kilograms  |
| Product Care             | Wipe with Damp Cloth                                |





Image: Visual representation of the bedside table's dimensions and key features like load capacity and ease of cleaning.

## 9. WARRANTY AND SUPPORT

Information regarding specific warranty terms or direct customer support contacts for the Casaria Eloise Bedside Table is not provided in the product description. Please refer to your purchase documentation or the retailer's website for details on warranty coverage and customer service options.