

Tefal QT2020

Tefal IXEO Power All-In-One QT2020 Garment Steamer

USER MANUAL

Model: QT2020 | 2170W | 200g/min - 90g/min

1. Important Safety Instructions

Please read all instructions carefully before using the appliance. Keep this manual for future reference.

- Always plug the appliance into an earthed socket.
- Do not leave the appliance unattended while it is connected to the mains supply.
- Keep the appliance and its cord out of reach of children and persons with reduced physical, sensory or mental capabilities.
- Do not immerse the appliance, power cord, or plug in water or any other liquid.
- Use only distilled or demineralized water in the water tank. Tap water may cause limescale buildup.
- The steam head and soleplate become very hot during use and can cause burns. Avoid direct contact with skin.
- Always unplug the appliance before filling or emptying the water tank, cleaning, or when not in use.
- Do not operate the appliance if it has been dropped, damaged, or if the cord or plug is damaged. Contact authorized service.
- Ensure the Smart Board is securely locked in position before use.

2. Product Overview and Components

The Tefal IXEO Power All-In-One system is designed for efficient garment care, combining a powerful steamer with an integrated ironing board.



Figure 2.1: Complete Tefal IXEO Power All-In-One system, showcasing the main unit, adjustable Smart Board, and steam head.



Figure 2.2: The ergonomic steam head, designed for comfortable and effective wrinkle removal.



Figure 2.3: The removable 1.1 Liter water tank for easy refilling.



Figure 2.4: The compact, removable base unit and steam head, allowing for portable use.

Key Components:

- **Smart Board:** Integrated ironing board with 3 adjustable positions (vertical, 30-degree, horizontal).
- **Steam Head:** Lightweight iron head with precision tip for effective steaming and ironing.
- **Water Tank:** 1.1 L removable tank for continuous steam.
- **Base Unit:** Contains the high-pressure boiler and can be detached for portable use.
- **Fabric Brush:** Included accessory for optimal steam penetration on thick fabrics.

3. Setup Guide

1. **Unpacking:** Carefully remove all components from the packaging. Retain packaging for storage or transport.
2. **Assembly:**
 - a. Insert the main pole into the base unit until it clicks securely.
 - b. Attach the Smart Board to the main pole, ensuring it is firmly in place.
 - c. Connect the steam hose from the base unit to the steam head holder.
3. **Filling the Water Tank:**
 - a. Remove the water tank from the base unit (refer to Figure 2.3).
 - b. Fill the tank with distilled or demineralized water up to the MAX line. Do not use additives or perfumes.
 - c. Replace the water tank firmly into the base unit.
4. **Power Connection:** Plug the power cord into a suitable earthed electrical outlet.
5. **Initial Heat-up:** Press the power button. The appliance will heat up in approximately 70 seconds. The indicator light will stop flashing when ready for use.

4. Operating Instructions

The IXEO Power offers versatile garment care with its adjustable Smart Board and powerful steam.

4.1. Using the Smart Board

The Smart Board can be adjusted to three positions for optimal comfort and efficiency:

- **Vertical Position:** Ideal for steaming hanging garments like dresses, suits, or curtains.
- **30-Degree Angled Position:** Provides a comfortable angle for steaming and light ironing, reducing strain.
- **Horizontal Position:** Functions as a traditional ironing board for pressing stubborn wrinkles.



Figure 4.1: Smart Board adjustability for various garment care needs.

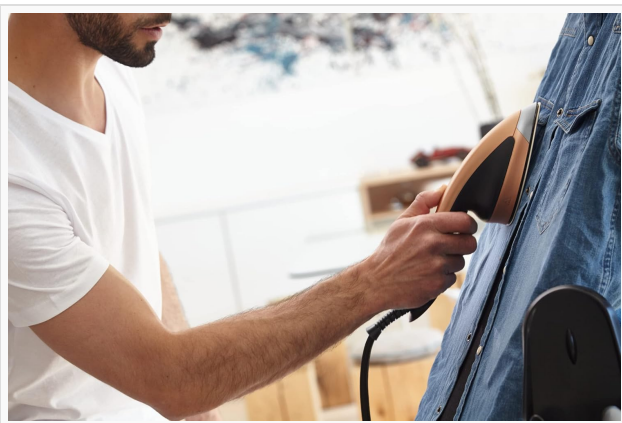


Figure 4.2: Steaming a garment on the Smart Board.

4.2. Steaming and Ironing

1. Once the appliance is ready, press the steam trigger on the handle to release steam.

2. For vertical steaming, hold the steam head close to the fabric and move it up and down.
3. For horizontal ironing, place the garment on the Smart Board and glide the steam head over the fabric like a traditional iron.
4. Use the steam boost function for stubborn wrinkles by pressing the dedicated button on the handle.
5. The included fabric brush can be attached to the steam head for better steam penetration on thicker materials.

4.3. Portable Use

The base unit and steam head can be detached from the main pole for portable use, allowing you to refresh curtains, furniture, or other items around your home.

- To detach, ensure the appliance is unplugged and cooled. Follow the instructions in the quick start guide for safe detachment.
- Carry the base unit and steam head using the integrated handle (refer to Figure 2.4).
- Plug the unit into a power outlet near the item you wish to steam.

5. Maintenance and Care

Regular maintenance ensures optimal performance and extends the lifespan of your appliance.

- **Emptying the Water Tank:** After each use, unplug the appliance and allow it to cool. Remove and empty any remaining water from the tank.
- **Cleaning the Steam Head:** Wipe the soleplate of the steam head with a damp cloth. Do not use abrasive cleaners or scouring pads.
- **Descaling:** Depending on water hardness and frequency of use, descaling may be required. Refer to the full instruction manual for detailed descaling procedures. Typically, this involves flushing the boiler with clean water.
- **Storage:** Store the appliance in a dry, safe place. Ensure the Smart Board is folded or set to its most compact position.

6. Troubleshooting

Problem	Possible Cause	Solution
No steam is produced.	Water tank is empty; appliance not heated up; power cord not connected.	Fill water tank; wait for indicator light to stop flashing; check power connection.
Water drips from the steam head.	Appliance not hot enough; steam trigger held too long without movement.	Wait for full heat-up; move the steam head continuously during use.
Wrinkles are not fully removed.	Insufficient steam; fabric too thick; incorrect technique.	Ensure continuous steam; use fabric brush; apply steam boost; try horizontal ironing for stubborn wrinkles.
Appliance makes unusual noise.	Low water level; normal pump operation.	Check water level and refill if necessary. Some pump noise is normal during operation.

If the problem persists after trying these solutions, please contact Tefal Customer Support.

7. Specifications

- **Model:** QT2020
- **Power:** 2170 Watts
- **Voltage:** 230 Volts
- **Steam Pressure:** Up to 5.8 Bar Pump Pressure
- **Continuous Steam Output:** 90 g/minute
- **Steam Boost:** Up to 200 g/minute
- **Heat-up Time:** Approximately 70 seconds
- **Water Tank Capacity:** 1.1 Liters
- **Item Weight:** 11.3 Kilograms
- **Product Dimensions (L x W x H):** 42cm x 29cm x 168cm
- **Color:** Black Copper

8. Warranty and Support

Tefal is committed to providing high-quality products. The IXEO Power All-In-One QT2020 is designed as a repairable product for 10 years, ensuring long-term usability and support.

For warranty claims, technical assistance, or to purchase spare parts, please visit the official Tefal website or contact your local authorized service center. Please have your proof of purchase and product model number ready when contacting support.

For more information, visit: www.tefal.com