

[manuals.plus](#) /

› [Teslong](#) /

› [Teslong Wireless Endoscope User Manual](#)

Teslong Single Lens

Teslong Wireless Endoscope User Manual

Model: Single Lens

1. INTRODUCTION

Thank you for choosing the Teslong Wireless Endoscope. This 1080P HD WiFi Inspection Camera is designed to provide clear visual inspection in hard-to-reach areas. Featuring a 7mm borescope camera with a detachable semi-rigid cable and IP67 waterproof rating, it is ideal for various applications including automotive repair, industrial mechanical inspection, drain checking, and pipeline inspection. This manual provides detailed instructions for setup, operation, maintenance, and troubleshooting to ensure optimal performance and longevity of your device.



Figure 1.1: Teslong Wireless Endoscope with smartphone holder.

2. SAFETY INFORMATION

Please read all safety warnings and instructions before using this product to prevent electric shock, fire, or serious injury.

- Do not use the device in explosive atmospheres, such as in the presence of flammable liquids, gases, or dust.
- Keep the camera probe and cable away from heat sources and sharp objects.
- Ensure the device is fully charged before use to avoid interruptions during inspection.
- The camera probe is IP67 waterproof, but the main unit (handle) is not. Do not submerge the main unit in water.
- Do not attempt to disassemble or modify the device. Repairs should only be performed by qualified personnel.
- Keep out of reach of children.

3. PACKAGE CONTENTS

Verify that all items are present in your package:

- Teslong Wireless Endoscope Main Unit (WF200L5S7MM)
- Semi-rigid Inspection Cable with 7mm Camera Probe
- USB Type-C Charging Cable
- User Manual (this document)
- Accessories (Hook, Magnet, Mirror)

4. PRODUCT OVERVIEW

The Teslong Wireless Endoscope features an ergonomic design for comfortable single-handed operation. It includes a detachable semi-rigid cable for easy storage and interchangeability.



Figure 4.1: Ergonomic design of the Teslong WF200 Wireless Endoscope.

Key Components:

- **Main Unit:** Handheld device with power button, brightness adjustment dial, and phone holder.
- **Camera Probe:** 7mm diameter, 2.0 Megapixels HD CMOS sensor with 8 adjustable LED lights.
- **Semi-rigid Cable:** Flexible yet firm cable for navigating tight spaces.
- **Built-in Flashlight:** Provides additional illumination on the main unit.
- **USB-C Port:** For charging the internal battery.



Figure 4.2: The built-in LED flashlight on the main unit provides additional illumination.

5. SETUP GUIDE

5.1 Charging the Device

Before first use, fully charge the endoscope. The built-in 2000mAh rechargeable battery provides up to 4 hours of continuous working time.

1. Connect the provided USB Type-C charging cable to the charging port on the main unit.
2. Connect the other end of the cable to a standard USB power adapter (not included) or a computer USB port.
3. The charging indicator light will show the charging status. Once fully charged, the light will change (refer to device indicators for specific behavior).



Figure 5.1: The endoscope features a 2000mAh high-capacity battery for extended use.

5.2 Installing the "Smart Endoscope" App

The Teslong Wireless Endoscope requires the "Smart Endoscope" app for operation. It is compatible with Android (7.0+) and iOS (10.0+) devices.

1. Scan the QR code provided in the quick start guide or search for "Smart Endoscope" on the App Store (for iOS) or Google Play Store (for Android).
2. Download and install the app on your smartphone or tablet.



WiFi Connection Easy to use

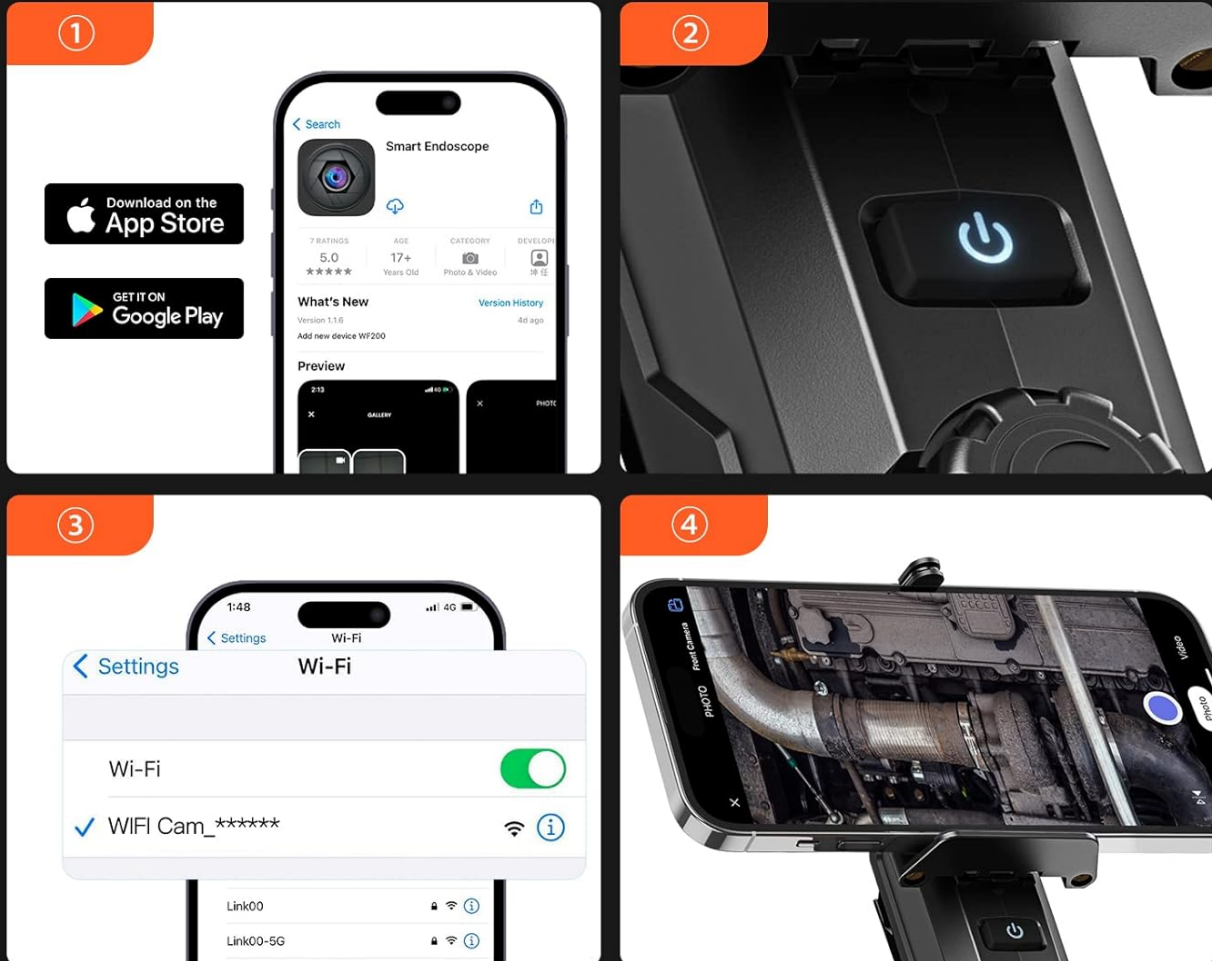


Figure 5.2: Step-by-step guide for app installation and WiFi connection.

5.3 Connecting via Wi-Fi

Once the app is installed, connect your device to the endoscope's Wi-Fi network.

1. Power on the Teslong Wireless Endoscope by pressing and holding the power button on the main unit.
2. On your smartphone or tablet, go to Wi-Fi settings.
3. Locate and select the Wi-Fi network named "WF_Cam_*****" (the asterisks will be replaced by a unique device ID).
4. Once connected, open the "Smart Endoscope" app. The camera feed should now be visible.

5.4 Attaching the Inspection Cable

The semi-rigid inspection cable is detachable for convenience and versatility.

1. Align the connector of the inspection cable with the port on the main unit.
2. Gently push and twist the connector clockwise until it clicks securely into place.

3. To detach, twist counter-clockwise and pull.

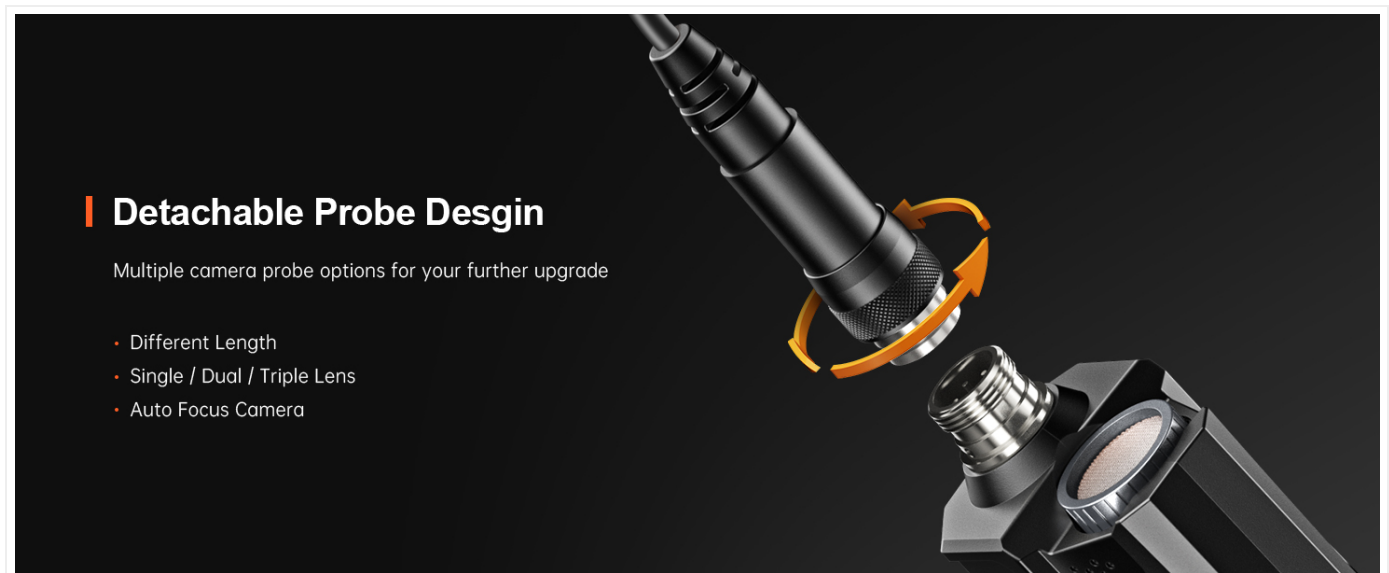


Figure 5.3: The detachable probe design allows for easy storage and future upgrades.

6. OPERATING INSTRUCTIONS

6.1 Powering On/Off

- **Power On:** Press and hold the power button on the main unit until the indicator light illuminates.
- **Power Off:** Press and hold the power button again until the indicator light turns off.

6.2 Adjusting LED Lights

The camera probe is equipped with 8 adjustable LED lights to illuminate dark inspection areas.

- Rotate the brightness adjustment dial on the main unit to increase or decrease the intensity of the LED lights. There are three adjustable brightness levels.



IP67 Waterproof Camera 8 High Brightness LEDs

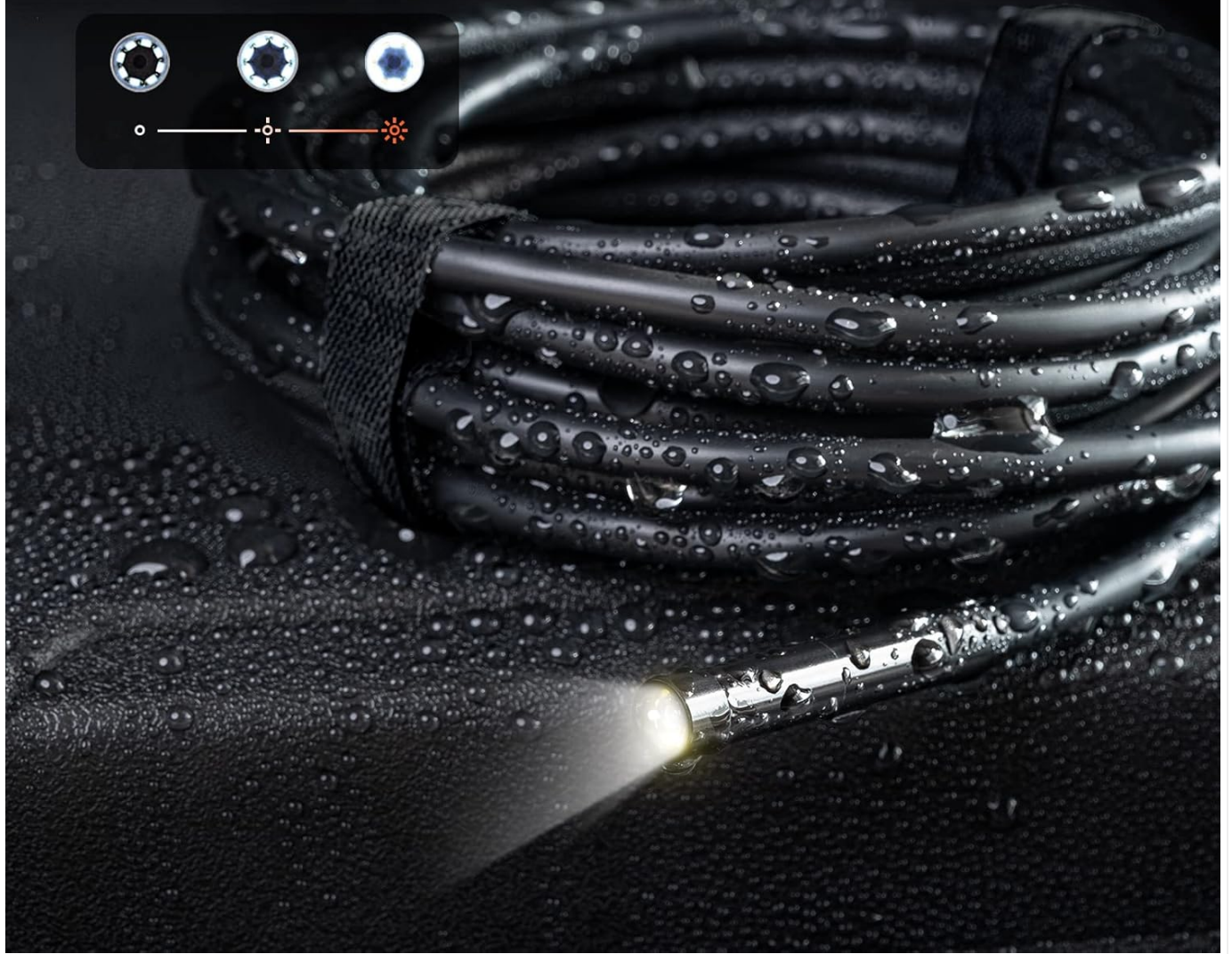


Figure 6.1: The camera probe features 8 high-brightness LEDs and is IP67 waterproof.

6.3 Capturing Images and Videos

Use the "Smart Endoscope" app to capture high-resolution images and videos.

- **Taking Photos:** In the app interface, tap the camera icon to capture a still image. Images are saved in JPEG format.
- **Recording Videos:** Tap the video camera icon to start recording. Tap it again to stop. Videos are saved in MP4 format.
- Captured media will be stored directly on your connected smartphone or tablet.



See The Solution

On your iPhone/iPad/Android Smartphone/Tablet



Figure 6.2: View the inspection feed on your iPhone, iPad, or Android smartphone/tablet.

6.4 Using Accessories (Hook, Magnet, Mirror)

The endoscope comes with useful accessories that can be attached to the camera probe for enhanced functionality.

- **Hook:** Useful for retrieving small objects from hard-to-reach places.
- **Magnet:** Ideal for picking up metallic items like screws or keys.
- **Mirror:** Provides a side view for inspecting areas that are not directly in front of the camera.

To attach an accessory, carefully slide it onto the tip of the camera probe until it is secure.

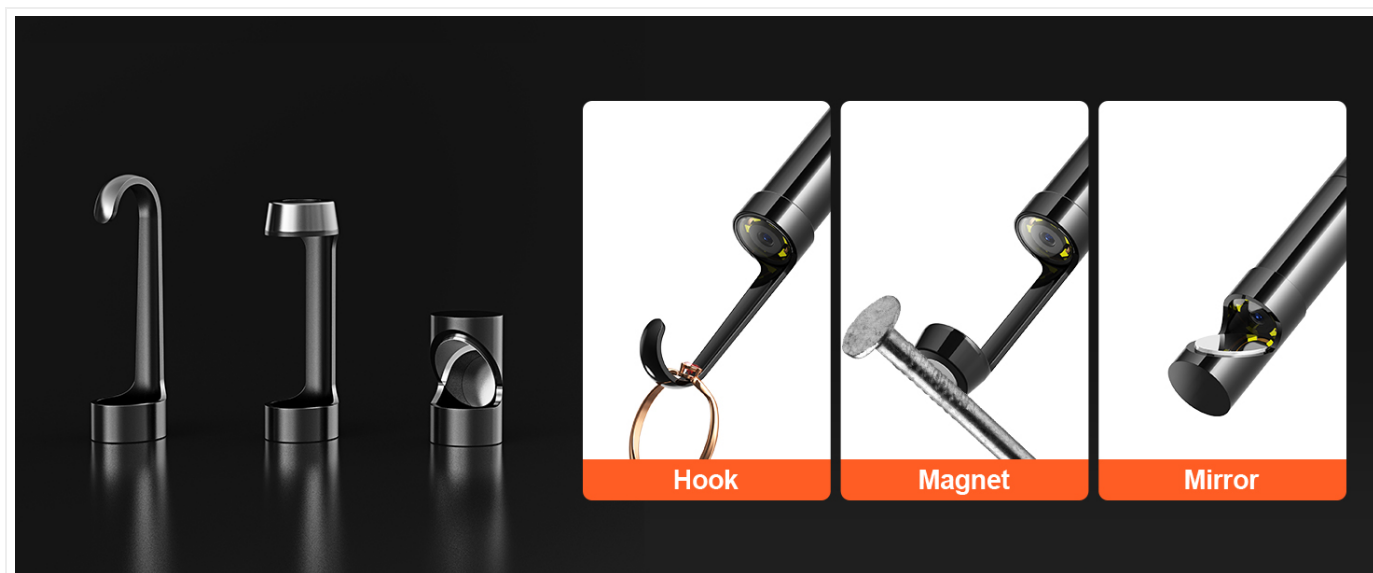


Figure 6.3: Included accessories: Hook, Magnet, and Mirror for versatile inspections.

7. MAINTENANCE

7.1 Cleaning

- After each use, especially in dirty or wet environments, clean the camera probe and cable with a soft, damp cloth.
- For stubborn dirt, a mild detergent can be used, but ensure no liquid enters the main unit.
- Do not use abrasive cleaners or solvents.
- Ensure the camera lens is clean for clear images. Use a lens cleaning cloth if necessary.

7.2 Storage

- Store the endoscope in a cool, dry place, away from direct sunlight and extreme temperatures.
- Detach the inspection cable from the main unit for compact storage.
- Keep the device and accessories in their original packaging or a protective case to prevent damage.

8. TROUBLESHOOTING

Problem	Possible Cause	Solution
Device does not power on.	Low battery.	Charge the device fully using the provided USB-C cable.
No image on the app.	Wi-Fi not connected or incorrect network selected.	Ensure your phone is connected to the "WF_Cam_*****" Wi-Fi network. Restart the app and the endoscope.
Image is blurry or dark.	Camera lens is dirty; insufficient lighting.	Clean the camera lens. Adjust the LED brightness using the dial on the main unit.
Wi-Fi connection is unstable.	Interference from other Wi-Fi networks; too far from the device.	Move closer to the endoscope. Try to minimize other Wi-Fi devices nearby.

Problem	Possible Cause	Solution
App crashes or freezes.	App version outdated; phone operating system issues.	Update the "Smart Endoscope" app to the latest version. Restart your smartphone/tablet.

9. SPECIFICATIONS

Feature	Detail
Model	Single Lens (WF200D7L5)
Camera Resolution	2.0 Megapixels (1920x1080p)
Probe Diameter	7mm / 0.28 inch
Cable Length	16.5ft (approx. 5 meters)
Waterproof Rating	IP67 (camera probe only)
LED Lights	8 adjustable LEDs
Battery Capacity	2000mAh Lithium Polymer
Working Time	Up to 4 hours
Charging Port	USB Type-C
Connectivity	Wi-Fi
Compatible OS	Android 7.0+ / iOS 10.0+
Image Format	JPEG
Video Format	MP4
Package Dimensions	22 x 21.1 x 4.9 cm
Package Weight	0.58 Kilograms

10. WARRANTY AND SUPPORT

Teslong provides a **12-month warranty** for this product, covering manufacturing defects from the date of purchase.

Warranty Exclusions:

- Damage caused by improper use, accident, abuse, neglect, or unauthorized modification.
- Normal wear and tear.
- Damage caused by natural disasters or acts of God.

Customer Support:

If you encounter any issues or have questions regarding your Teslong Wireless Endoscope, please contact our customer

support team. Refer to the contact information provided on the Teslong official website or your purchase documentation.
For more information and product updates, visit the official Teslong store:[Teslong Store on Amazon](#)



Related Documents - Single Lens

	Teslong MS450-NTC Inspection Camera User Manual This user manual guides users through the operation of the Teslong MS450-NTC inspection camera, a 4.5-inch HD endoscope. It covers product functions, safety, maintenance, battery, language settings, and specifications for effective visual inspection.
	DEPSTECH DS300 Dual Lens Endoscope Operation Guidance User guide for the DEPSTECH DS300 Dual Lens Industrial Endoscope, covering UI introduction, photo/video operations, file management, screen rotation, lens switching, TF card formatting, and accessory installation.
	Teslong NTS300 Inspection Camera User Manual and Guide Comprehensive user manual for the Teslong NTS300 inspection camera, detailing features, specifications, operating instructions, settings, and customer support.
	Kinpthy ALS100 Wireless Endoscope User Guide: 2560P HD WiFi Borescope with Dual Lens Comprehensive user guide for the Kinpthy ALS100 wireless endoscope. Learn about its 2560P HD dual-lens WiFi borescope, IP67 waterproof design, 9 LED lights, and compatibility with Android and iOS smartphones. Features detailed setup, usage, and troubleshooting information.
	KZYEE KZ3000 Borescope Inspection Camera User Manual User manual for the KZYEE KZ3000 Triple Lens Borescope Inspection Camera, detailing its features, specifications, operation, and maintenance.
	Oiiwak Triple Lens Endoscope User Manual User manual for the Oiiwak Triple Lens Endoscope, detailing its product overview, features, technical specifications, applications, safety precautions, and operational instructions for installation, file transfer, and charging.

Documents - Teslong – Single Lens



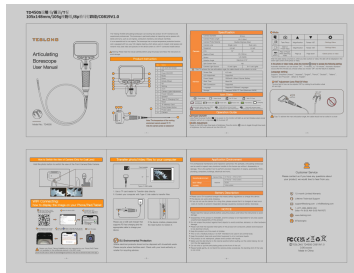
[Teslong WF150 WiFi Endoscope User Manual](#)
User manual for the Teslong WF150 WiFi Endoscope, covering safety, specifications, general guide, app download, connection instructions, and app usage.
lang:de score:33 filesize: 771.88 K page_count: 1 document date: 2025-07-01



[Teslong NTS700 7-inch Inspection Camera User Manual](#)

Comprehensive user manual for the Teslong NTS700 7-inch inspection camera, covering features, specifications, operation, WiFi connectivity, file transfer, and customer support. Includes safety guidelines and maintenance tips.

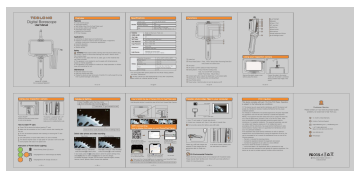
lang:en **score:32** filesize: 1.06 M page_count: 10 document date: 0000-00-00



[Teslong TD450S Articulating Borescope User Manual](#)

User manual for the Teslong TD450S articulating borescope, detailing its specifications, product instructions, operation guide, WiFi connectivity, and important notices for mechanics and professionals.

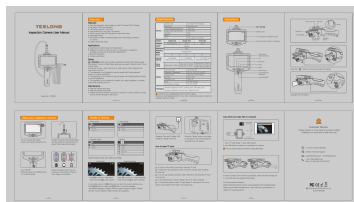
lang:en **score:31** filesize: 1.49 M page_count: 1 document date: 2024-04-08



[Teslong NTS600 Digital Borescope User Manual - Features, Specifications, and Operation](#)

Comprehensive user manual for the Teslong NTS600 Digital Borescope, detailing its features, technical specifications, functions, operation, connectivity, file transfer, and customer support. Includes safety warnings and FCC compliance information.

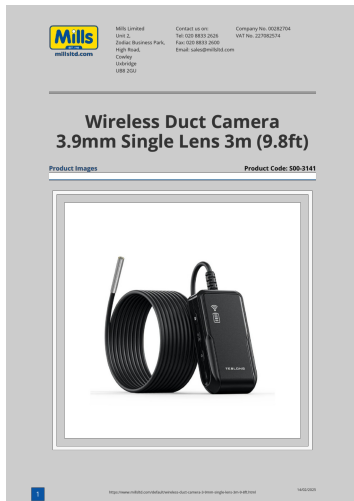
lang:en **score:23** filesize: 1.74 M page_count: 1 document date: 2023-08-02



[TESLONG NTS300 Inspection Camera User Manual](#)

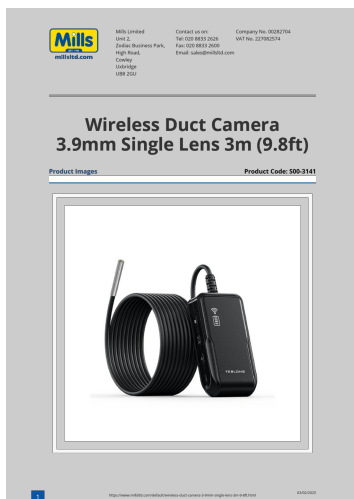
User manual for the TESLONG NTS300 inspection camera, detailing features, specifications, operation, settings, and customer support. Includes guidance on using the 5.0-inch IPS HD display, camera probe, and data transfer.

lang:en **score:22** filesize: 5.63 M page_count: 1 document date: 2021-12-07



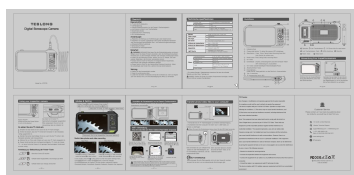
[\[pdf\]](#)

Wireless Duct Camera 3 9mm Single Lens 3m 9 8ft S00 3141 millsLtd default product file id 23809 |||
Mills Limited Unit 2, Zodiac Business Park, High Road, Cowley Uxbridge UB8 2GU
Contact us on: Company No. 00282704 Tel: 020 8833 2626 VAT No. 227082574 Fax:
020 8833 2600 Email: sales millsLtd.com Wireless Duct Camera 3.9mm **Single Lens**
3m 9.8ft Product Images Product Code: S00-3141 1 ht..
lang:en **score:21** filesize: 146.07 K page_count: 2 document date: 2025-02-14



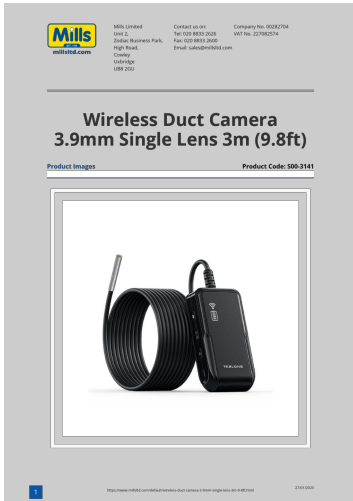
[\[pdf\]](#)

Wireless Duct Camera 3 9mm Single Lens 3m 9 8ft S00 3141 millsLtd default product file id 23809 name
|||
Mills Limited Unit 2, Zodiac Business Park, High Road, Cowley Uxbridge UB8 2GU
Contact us on: Company No. 00282704 Tel: 020 8833 2626 VAT No. 227082574 Fax:
020 8833 2600 Email: sales millsLtd.com Wireless Duct Camera 3.9mm **Single Lens**
3m 9.8ft Product Images Product Code: S00-3141 1 ht..
lang:en **score:21** filesize: 146.07 K page_count: 2 document date: 2025-02-03



[Teslong NTS700 Digital Borescope Camera User Manual and Specifications](#)

Comprehensive guide to the Teslong NTS700 Digital Borescope Camera, covering features, specifications, operation, safety, and troubleshooting. Includes detailed instructions for use with smartphones and computers.
lang:de **score:20** filesize: 1.48 M page_count: 1 document date: 2023-12-05



[\[pdf\]](#) Datasheet

Data Sheet Wireless Duct Camera 3 9mm Single Lens 3m 9 8ft Mills Ltd London s Leading Supplier Of Structured Cabling Specialist Tooling S00 3141 millsltd default product file id 23809 name |||

Mills Limited Unit 2, Zodiac Business Park, High Road, Cowley Uxbridge UB8 2GU

Contact us on: Company No. 00282704 Tel: 020 8833 2626 VAT No. 227082574 Fax: 020 8833 2600 Email: sales millsltd.com Wireless Duct Camera 3.9mm **Single Lens** 3m 9.8ft Product Images Product Code: S00-3141 1 ht...

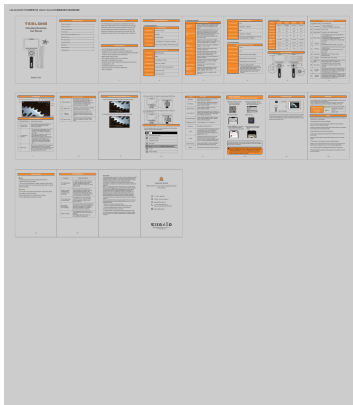
lang:en **score:20** filesize: 146.07 K page_count: 2 document date: 2025-01-27



[TS43 Digital Inspection Endoscope Product Manual](#)

This product manual provides detailed information on the TS43 Digital Inspection Endoscope, covering its operation, safety precautions, and technical specifications. Designed for industrial use, it features a 4.3-inch HD display and LED lighting for clear visibility in challenging environments.

lang:i-klngon **score:18** filesize: 10.02 M page_count: 27 document date: 2023-08-10



[\[pdf\]](#) User Manual Specifications Guide

3 06 002200 TF500 T 190x117 5m105g 20P D1213V1 0 User manual Shenzhen Teslong Technology Co Ltd TF50025 Articulating Borescope 2AXAVTF50025 tf50025

Articulating Borescope User Manual Model No.: TF500 Table Of Contents Product Introduction----- ... Solid orange light; orange light turns off when fully charged 4. Camera Parameters Model 6.5 mm **Single Lens** Camera Lens **Single Lens** Megapixel 2 MP Frame Rate 20fps Camera Voltage 3.3 V Le...

lang:en **score:14** filesize: 5.82 M page_count: 1 document date: 2025-02-25