

Shad SH44

SH44 Top Case for Motorcycles User Manual

MODEL: SH44

Brand: Shad

PRODUCT OVERVIEW

The Shad SH44 Top Case is a durable and spacious storage solution designed for motorcycles and scooters. It offers secure storage and convenient access for your belongings, including capacity for two full-face helmets.

Key features include:

- Capacity for two full-face helmets.
- Secure lock system for enhanced safety.
- Integrated rubber seal for weather protection.
- Includes a universal mounting baseplate.



Image: The Shad SH44 Top Case in its closed position, showcasing its sleek design and carbon-style lid.

INSTALLATION GUIDE

Proper installation of the SH44 Top Case is essential for safety and stability. The top case comes with a universal mounting baseplate. For specific bike compatibility and detailed fitting instructions, it is recommended to consult the manufacturer's website or the specific Top Master Fitting Kit for your motorcycle model.

Mounting the Baseplate

The included baseplate is designed for universal fitment on most motorcycle rear racks. Ensure your rack is sturdy enough to support the weight of the top case and its contents. Use the provided hardware to securely attach the baseplate to your motorcycle's luggage rack. All bolts should be tightened according to your motorcycle's specifications, and checked periodically for tightness.

Attaching the Top Case

Once the baseplate is securely installed, align the SH44 Top Case with the baseplate's locking mechanism. Press down firmly until you hear a click, indicating that the case is locked onto the baseplate. Always verify that the top case is securely attached before riding.

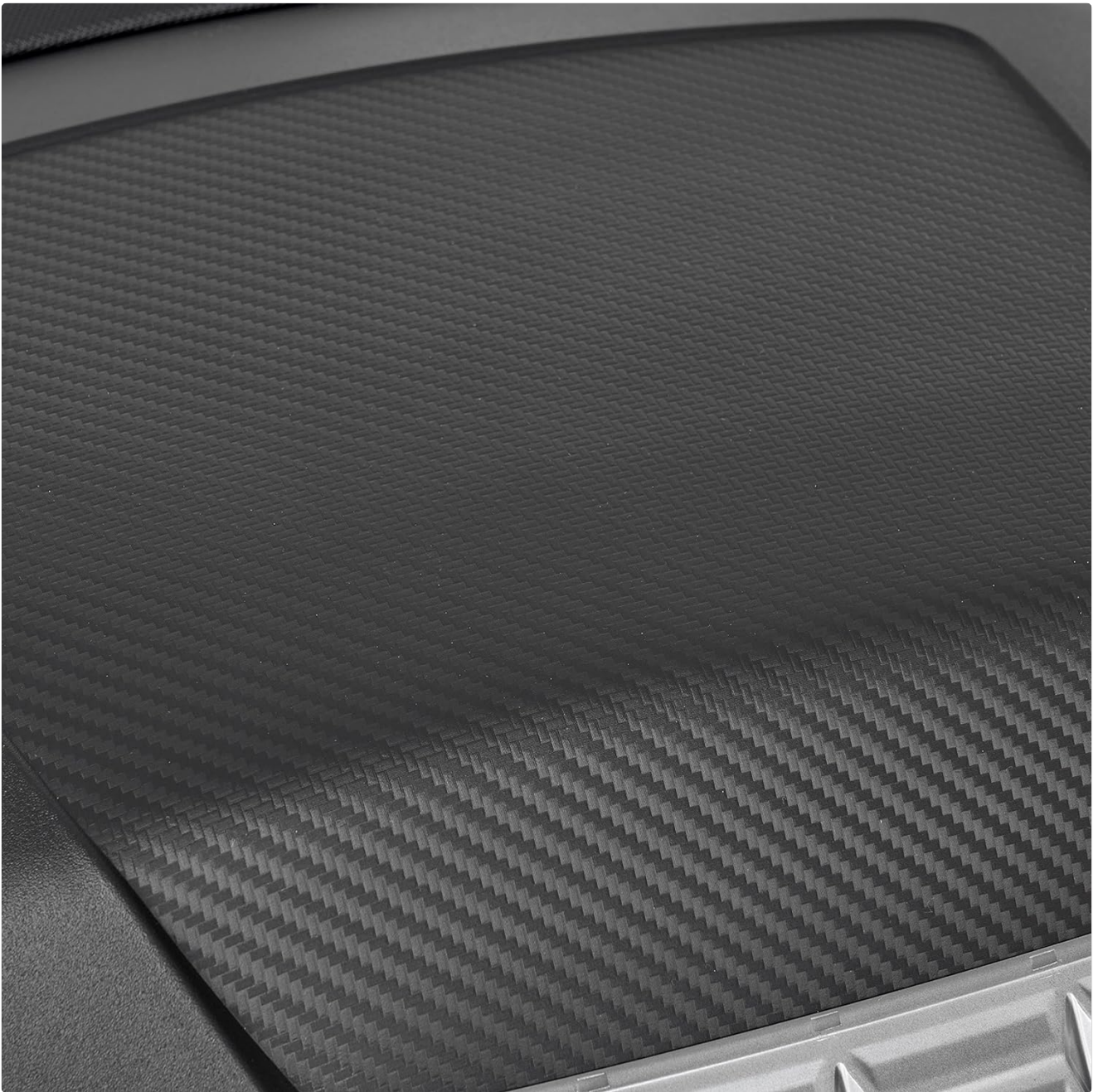


Image: The SH44 Top Case securely mounted on the rear of a black scooter, demonstrating proper installation.



Image: A side view of the SH44 Top Case mounted on a white motorcycle, showing its integration with the vehicle's design.

OPERATING INSTRUCTIONS

Opening and Closing the Top Case

The SH44 Top Case features a user-friendly locking system. Insert the key into the lock cylinder and turn it to unlock. To open the lid, press the release button located near the lock. To close, simply lower the lid until it clicks shut. The secure lock system ensures your belongings are safe during transit.



Image: A detailed view of the SH44's robust locking mechanism, designed for security and ease of use.

Capacity and Storage

The SH44 Top Case boasts a generous 44-liter capacity, capable of accommodating two full-face helmets. The interior is designed to maximize space while providing a secure environment for your items. An integrated rubber seal helps protect contents from water and dust.



Image: The SH44 Top Case with its lid open, clearly showing enough space to store two full-face motorcycle helmets.

MAINTENANCE

To ensure the longevity and optimal performance of your SH44 Top Case, regular maintenance is recommended:

- **Cleaning:** Clean the exterior with mild soap and water. Avoid abrasive cleaners or solvents that could damage the finish.
- **Lock Mechanism:** Periodically lubricate the lock cylinder with a graphite-based lubricant to ensure smooth operation.
- **Rubber Seal:** Inspect the rubber seal around the lid for any signs of wear or damage. A damaged seal can compromise the case's waterproof properties. Clean the seal regularly to remove dirt and debris.
- **Mounting Hardware:** Regularly check all mounting bolts and screws for tightness, especially after long rides

or off-road use.

TROUBLESHOOTING

This section addresses common issues you might encounter with your SH44 Top Case.

Case Not Locking Securely

- **Check for Obstructions:** Ensure no items inside the case are preventing the lid from closing completely.
- **Inspect Lock Mechanism:** Verify that the lock mechanism is free of debris and operating smoothly. Lubricate if necessary.
- **Key Alignment:** Ensure the key is fully inserted and turned correctly before attempting to lock.

Water Leakage

- **Inspect Rubber Seal:** Check the rubber seal around the lid for cracks, tears, or displacement. Replace if damaged.
- **Lid Closure:** Ensure the lid is fully closed and latched on all sides.

Difficulty Attaching/Detaching from Baseplate

- **Alignment:** Ensure the top case is correctly aligned with the baseplate's mounting points.
- **Release Mechanism:** Verify the release mechanism on the top case is fully engaged or disengaged as required.
- **Debris:** Check for any debris or foreign objects on the baseplate or the bottom of the top case that might hinder proper seating.

SPECIFICATIONS

Feature	Detail
Model	SH44
Capacity	44 Liters (fits 2 full-face helmets)
Material	Thermoplastic Polyurethane or Polypropylene
Color	Schwarz (Black)
Item Weight	4.79 Kilograms (approx. 10.54 pounds)
Product Dimensions	21.65 x 17.13 x 12.4 inches
Mounting Type	Seat Mount (with included baseplate)
Special Features	Waterproof, 2 Full Face Helmet Capacity

OPTIONAL ACCESSORIES

Enhance the functionality and comfort of your SH44 Top Case with these optional accessories:

- **Backrest:** Provides additional comfort for a passenger. (Reference: D0RI60)
- **Inner Bag:** A soft inner bag for convenient carrying of contents. (Reference: X0IB00)
- **LED Brake Light:** Integrates with your motorcycle's brake light system for increased visibility. (Reference: D0B40KL)


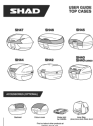
WARRANTY AND SUPPORT

For detailed warranty information, please refer to the documentation provided with your purchase. For product support, technical assistance, or to inquire about spare parts, please visit the official Shad website or contact their customer service department. Always ensure you have your product model number (SH44) and purchase details available when seeking support.

Official Shad Website: www.shad.es

© 2025 Shad. All rights reserved.

Related Documents - SH44

	<p>SHAD SH44 Top Case User Guide and Assembly Instructions</p> <p>Comprehensive user guide and assembly instructions for the SHAD SH44 motorcycle top case, detailing care, maintenance, operation, assembly, accessories, and the company's sustainability efforts.</p>
	<p>SHAD Top Cases User Guide</p> <p>User guide for SHAD top cases including models SH47, SH46, SH45, SH44, SH42, SH40, and SH40 Cargo. Details assembly, operation, and maintenance.</p>



[SHAD SH34 Top Case User Guide and Installation Manual](#)

Comprehensive user guide for the SHAD SH34 motorcycle top case, detailing installation, operation, maintenance, safety precautions, and available accessories. Learn about SHAD's commitment to reforestation.



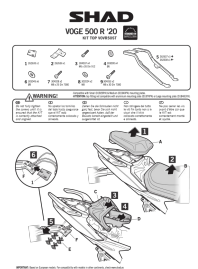
[SHAD SH58X Expandable Top Case User Guide](#)

Comprehensive user guide for the SHAD SH58X expandable top case, covering care, maintenance, expansion, opening, closing, assembly, and accessories.



[SHAD SH39 Top Case User Guide](#)

User guide for the SHAD SH39 top case, covering care, maintenance, opening, closing, assembly, release, and accessories.



[SHAD VOGUE 500 R '20 KIT TOP VOV50ST Installation Guide](#)

Detailed installation guide for the SHAD VOGUE 500 R '20 KIT TOP VOV50ST, including parts list, warnings, and assembly steps. Designed for motorcycle enthusiasts.