

SONRU WP20-C

SONRU Wireless Car Charger Mount WP20-C Instruction Manual

Model: WP20-C

1. INTRODUCTION

Thank you for purchasing the SONRU Wireless Car Charger Mount WP20-C. This device provides convenient and fast wireless charging for your mobile phone while driving, featuring automatic clamping and multiple mounting options. Please read this manual thoroughly before use to ensure proper operation and safety.

2. SAFETY INFORMATION

- Do not disassemble or modify the product.
- Keep the device away from water, fire, and high temperatures.
- Use only a QC 3.0 compatible car charger adapter for optimal performance and safety.
- Ensure the mounting location does not obstruct your view or interfere with vehicle controls.
- Avoid placing metal objects, credit cards, or other foreign materials between your phone and the charger.
- Do not use the wireless charging function with phone cases thicker than 8mm, or cases containing metal, rings, or external attachments.

3. PACKAGE CONTENTS

Please verify that all items are present:

- SONRU Wireless Car Charger Mount
- Suction Cup Mount (for Dashboard/Windshield)
- Air Vent Clip Mount
- USB-C Charging Cable
- User Manual (this document)

4. PRODUCT OVERVIEW

The SONRU WP20-C features an intelligent auto-clamping mechanism and 15W fast wireless charging. It includes an extendable and rotatable arm for flexible positioning.



Image 4.1: Overview of the SONRU Wireless Car Charger Mount, showing both the suction cup and air vent mounting options.

Key Features:

- **Automatic Opening & Clamping:** The holder arms automatically open when connected to power and clamp when a phone is placed.
- **15W Fast Wireless Charging:** Supports various charging speeds up to 15W for compatible devices.
- **Built-in Super Capacitor:** Allows 2-3 operations (open/close) after the car engine is turned off.
- **Multiple Mounting Options:** Includes a powerful suction cup for dashboard/windshield and an upgraded air vent clip.
- **Case Friendly:** Compatible with phone cases up to 8mm thick (non-metallic).
- **Flexible Angle:** 360° rotatable ball head and retractable arm for optimal viewing.

5. SETUP INSTRUCTIONS

5.1 Choosing a Mounting Location

The charger offers versatile mounting options for your convenience. Select the best location that provides

a clear view of your phone without obstructing your driving view or vehicle controls.



Image 5.1: Various mounting options including air vent, dashboard, and windshield.

5.2 Suction Cup Mount Installation (Dashboard/Windshield)

1. **Clean the Surface:** Ensure the dashboard or windshield surface is clean and dry.
2. **Attach Suction Cup:** Press the suction cup firmly onto the desired smooth surface.
3. **Secure the Mount:** Push down the pressure button or lever on the suction cup base to create a vacuum seal, firmly gripping the surface.
4. **Adjust Angle:** Loosen the adjustment knob on the arm to set the desired angle and extension, then tighten to secure.



Image 5.2: Detailed steps for installing the suction cup mount, including cleaning the surface and locking the suction mechanism. The suction cup can be washed and reused.

5.3 Air Vent Clip Mount Installation

1. **Attach Clip:** Securely attach the air vent clip to a suitable air vent slat. The clip is designed to form a stable triangular structure with the air outlet.
2. **Ensure Compatibility:** This mount is suitable for most parallel and vertical air vents. Avoid round or irregularly shaped vents.



Image 5.3: The air vent mount provides excellent stability for the phone holder, even during vehicle movements like bumpy roads or sharp turns.

5.4 Power Connection

Connect the provided USB-C charging cable to the charger mount and plug the other end into a QC 3.0 compatible car charger adapter (not included). The device requires a QC 3.0 adapter for optimal fast charging performance.

6. OPERATING INSTRUCTIONS

6.1 Automatic Opening and Clamping

Once the charger is connected to power, the clamping arms will automatically open. Simply place your phone into the holder, and the arms will automatically close to secure it and begin wireless charging.

Automatic Opening & Clamping & Charging

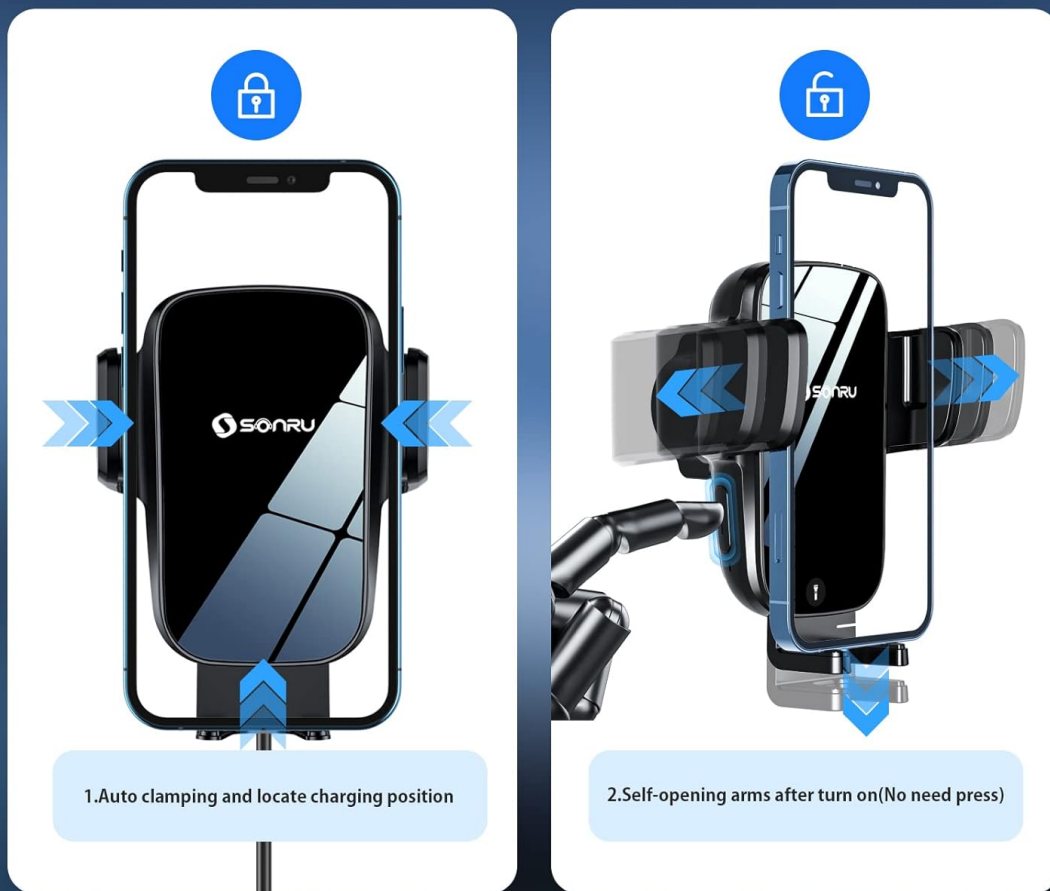


Image 6.1: Illustration of the automatic clamping feature. The arms open when powered, and close to secure the phone for charging.

6.2 Phone Placement and Removal

- **To Place:** With the charger powered on, the arms will be open. Gently place your phone into the holder. The arms will automatically clamp your phone.
- **To Remove:** Press one of the release buttons located on the sides of the charger. The arms will open, allowing you to retrieve your phone.

6.3 Wireless Charging Function

The charger supports 15W fast wireless charging for compatible devices. The charging speed will vary based on your phone model and the power adapter used. Ensure your phone supports wireless charging.

15W Super Fast Charging

Applicable size: 4.5-6.7 inch mobile phone



15W

LG G8/V50, Xiaomi 9



10W

Galaxy S20+/S20, Note10
+/Note10, S10+/S10/S10e,
S9/S8, Note 9/Note 8



7.5W

iPhone14/iPhone 13/ 12/ 12 pro/
iPhone SE 2020,11 Pro Max/11
Pro/11/XS Max/XS/XR/8 Plus/8



5W Qi

Standard for all Qi-enabled phone



Note: Please use QC 3.0 fast charger adapter



Image 6.2: Wireless charging compatibility and power output for various phone models (e.g., 15W for Huawei/LG, 10W for Samsung, 7.5W for iPhone, 5W for other Qi-enabled phones).

Case Compatibility: The charger is compatible with phone cases up to 8mm thick. Cases containing metal, rings, or external attachments are not supported and may interfere with charging or damage the device.

Phone Case Compatible



Metal case



Ring phone case



Ultra-thick case

Image 6.3: Guidelines for phone case compatibility, indicating maximum thickness and incompatible case types.

6.4 Adjusting Viewing Angle

The mount features a 360° rotatable ball head and an extendable arm (up to 20cm) to allow for flexible positioning and optimal viewing angles in both portrait and landscape modes.

360° Rotatable and Extendable Arm

The arm can extend the length to 20cm



Image 6.4: The mount's arm can extend up to 20cm and features a 360° rotatable ball joint for versatile positioning.

6.5 Power-Off Delay Feature

The built-in super capacitor allows the charger to operate 2-3 times (open/close) after the vehicle's engine is turned off. This ensures you can still remove your phone even if you forget to do so before powering down the car.

7. MAINTENANCE

- **Cleaning:** Wipe the device with a soft, dry cloth. Do not use harsh chemicals or abrasive cleaners.
- **Suction Cup Care:** If the suction cup loses adhesion, rinse it with water and let it air dry. This will restore its stickiness for reuse.
- **Storage:** When not in use for extended periods, store the charger in a cool, dry place.



Image 7.1: The anti-slip silicone pads on the clamping arms help secure the phone and prevent scratches.



Image 7.2: The charger features heat dissipation vents to maintain optimal operating temperature during charging.

8. TROUBLESHOOTING

Problem	Possible Cause	Solution
Charger not powering on / arms not opening.	No power connection or faulty cable/adaptor.	Ensure the USB-C cable is securely connected. Try a different USB port or QC 3.0 car charger adapter.
Phone not charging wirelessly.	Phone not Qi-compatible, misaligned, or case interference.	<ul style="list-style-type: none">• Verify your phone supports wireless charging.• Adjust phone position on the charger for proper alignment.• Remove phone case if it's thicker than 8mm or contains metal/magnets.• Ensure no foreign objects are between the phone and charger.
Slow charging speed.	Non-QC 3.0 adapter used or phone not supporting fast wireless charging.	Use a QC 3.0 compatible car charger adapter. Check your phone's specifications for supported wireless charging speeds.

Problem	Possible Cause	Solution
Mount not sticking to surface.	Dirty surface or suction cup.	Clean the dashboard/windshield surface and the suction cup. Rinse the suction cup with water and let it air dry to restore adhesion. Ensure the locking lever is fully engaged.
Arms not clamping/releasing smoothly.	Obstruction or low power.	Ensure no debris is blocking the arms. Check power connection. If the car is off, the super capacitor allows limited operations.

9. SPECIFICATIONS

Feature	Detail
Model Number	WP20-C
Input Voltage	12 Volts
Amperage	1.5 Amps
Wattage	7.5 Watts (Max 15W with compatible devices and adapter)
Connectivity	Wireless
Special Features	360° Rotation, Automatic Opening & Clamping, Power-Off Delay, Wireless Charging
Compatible Phone Size	4.7-6.8 inches (approximate, based on images)
Case Compatibility	Up to 8mm thick (excluding metal, rings, external attachments)
Item Weight	12 ounces
Package Dimensions	7.8 x 4.37 x 3.07 inches

10. WARRANTY AND SUPPORT

10.1 Warranty Information

This product typically comes with a 1-year warranty from the date of purchase. Please retain your proof of purchase for warranty claims. The warranty covers manufacturing defects but does not cover damage caused by misuse, accidents, or unauthorized modifications.

10.2 Customer Support

For any questions, technical assistance, or warranty claims, please contact SONRU customer support through the retailer's platform or the official SONRU website. Please provide your model number (WP20-C) and purchase details when contacting support.

