

[Manuals.plus](#) /

> [Ultimate Unicorn](#) /

> Ultimate Unicorn Waterfall Bathroom Sink Faucet Instruction Manual

Ultimate Unicorn DJS-MP-PB-B-A

Ultimate Unicorn Waterfall Bathroom Sink Faucet

Model: DJS-MP-PB-B-A | Brand: Ultimate Unicorn

INTRODUCTION

Thank you for choosing the Ultimate Unicorn Waterfall Bathroom Sink Faucet. This manual provides detailed instructions for the proper installation, operation, and maintenance of your new faucet. Please read this guide thoroughly before beginning installation to ensure safe and efficient use. This faucet features a modern matte black finish, two handles for precise temperature control, and a unique waterfall spout design, crafted from high-quality SUS304 Stainless Steel for durability.

SAFETY INFORMATION

- Always turn off the main water supply before installing or performing any maintenance on the faucet.
- Wear appropriate personal protective equipment, such as safety glasses and gloves, during installation.
- Ensure all connections are secure and watertight to prevent leaks.
- If you are unsure about any part of the installation process, consult a qualified plumber.

PACKAGE CONTENTS

Your Ultimate Unicorn Waterfall Bathroom Sink Faucet package includes 8 pieces necessary for installation and operation. Please verify that all components listed below are present before beginning installation.

- Waterfall Bathroom Faucet Assembly
- Two Handle Levers (Hot & Cold)
- Metal Pop-up Sink Drain Stopper
- Hot and Cold Water Supply Hoses
- Mounting Hardware (gaskets, nuts, washers)
- Deck Mount Plate (4 Inch)
- Instruction Manual



Image: All components included in the package, including the faucet body, handles, pop-up drain, and supply lines.

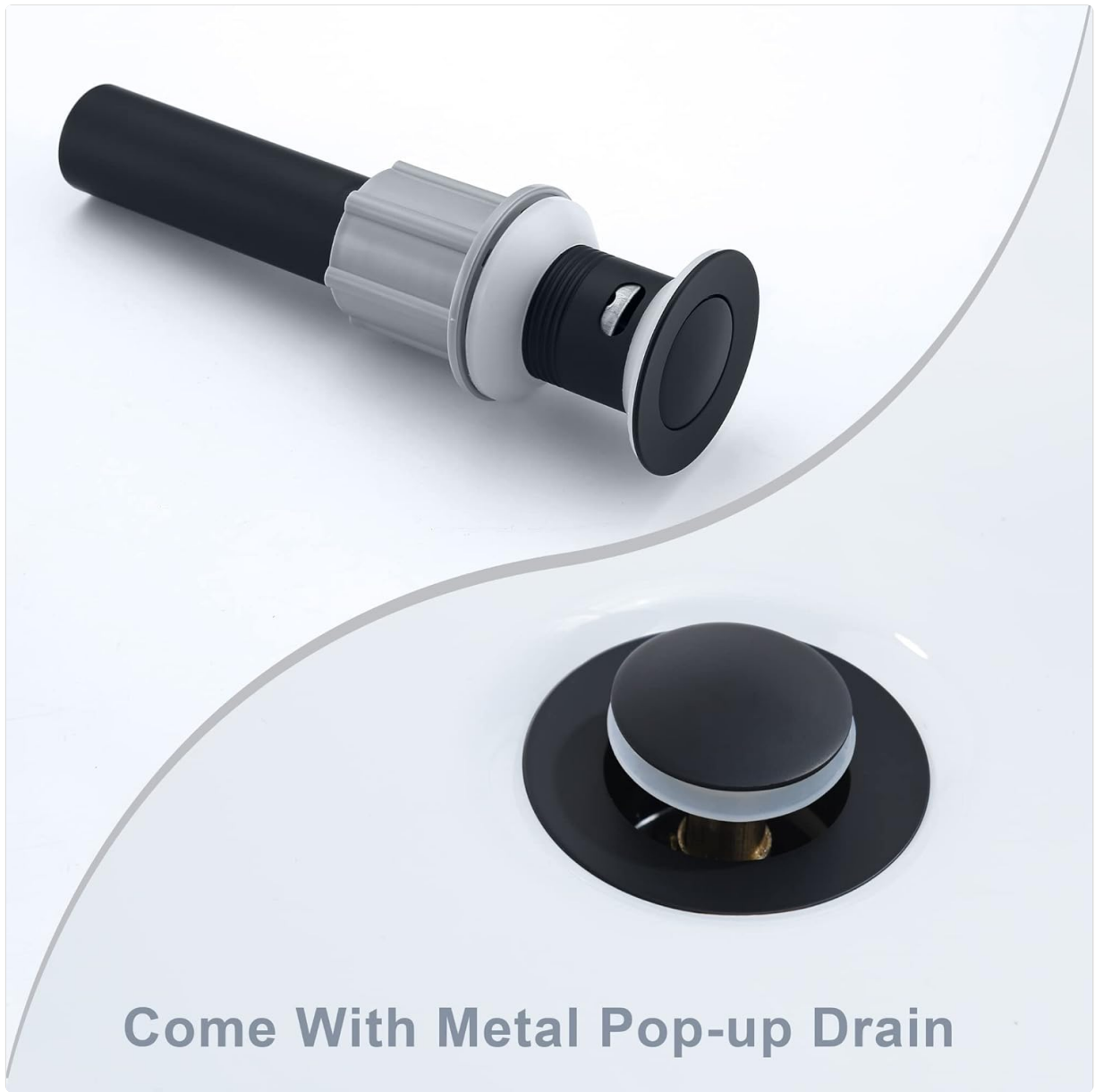


Image: Detailed view of the included metal pop-up drain stopper.

SPECIFICATIONS

Feature	Detail
Brand	Ultimate Unicorn
Model Name	DJS-MP-PB-B-A
Color	Matte Black
Material	SUS304 Stainless Steel
Mounting Type	Deck Mount
Number of Handles	2
Hole Count	2 or 3 Holes (with deck plate)
Maximum Flow Rate	1.2 Gallons Per Minute
Item Weight	3.64 Pounds

Product Dimensions

5.18"D x 6.18"W x 5.5"H

INSTALLATION GUIDE

Pre-Installation Checklist

- Ensure your bathroom sink has 2 or 3 holes with a 4-inch centerset configuration.
- The suitable size for your bathroom sink hole is 0.85-1.38 inches.
- Your bathroom sink should not be thicker than 1.18 inches.
- Gather necessary tools: adjustable wrench, plumber's tape, screwdriver, basin wrench (optional).

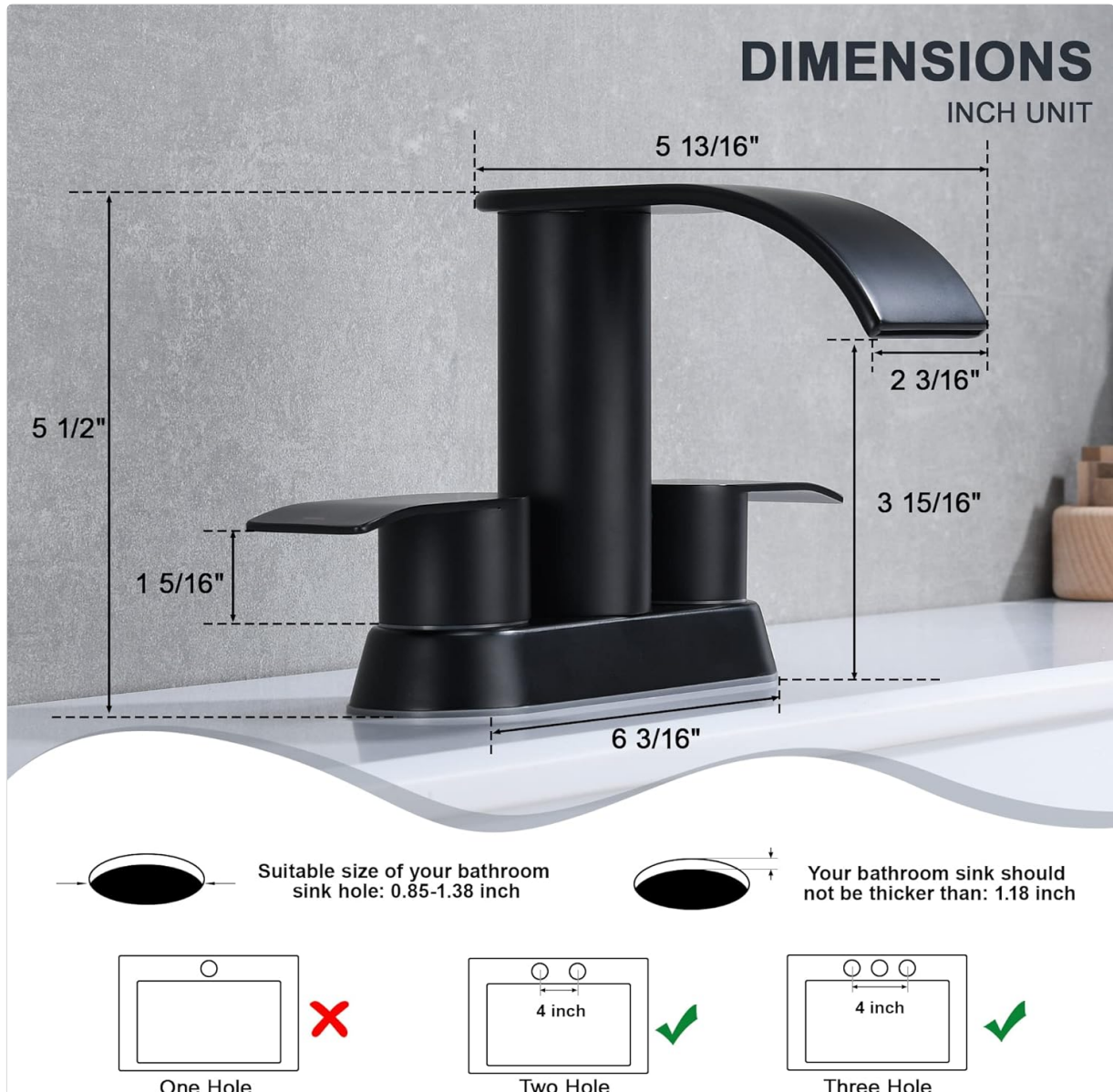


Image: Faucet dimensions and compatibility with 2 or 3-hole, 4-inch centerset sinks.

Step-by-Step Installation

1. **Turn off Water Supply:** Locate the main water supply valves under your sink and turn them off. Open the existing faucet to drain any remaining water.
2. **Remove Old Faucet:** Disconnect the hot and cold water supply lines from the old faucet. Unscrew the mounting nuts and remove the old faucet from the sink. Clean the sink surface thoroughly.
3. **Install Deck Plate (if needed):** If your sink has three holes, place the deck plate over the holes.

Apply a bead of silicone sealant around the base of the deck plate for a watertight seal.

4. **Mount Faucet Body:** Insert the faucet body through the center hole(s) of the sink/deck plate. From underneath the sink, secure the faucet body with the rubber washer, metal washer, and mounting nuts. Tighten the nuts firmly but do not overtighten.
5. **Connect Water Supply Lines:** Attach the hot and cold water supply hoses to the corresponding inlets on the faucet body (usually marked H for hot and C for cold). Ensure a tight connection, using plumber's tape on threaded connections if necessary. Connect the other ends of the supply hoses to your water supply valves.
6. **Install Pop-up Drain:** Follow the instructions provided with the metal pop-up drain stopper. Ensure proper sealing to prevent leaks. Some models may not require plumber's putty if tightened correctly.
7. **Test for Leaks:** Slowly turn on the main water supply. Check all connections for leaks. If any leaks are detected, tighten the connections as needed.
8. **Flush Faucet:** Remove the aerator (if present) and turn on both hot and cold water for a few minutes to flush out any debris from the lines. Reinstall the aerator.

OPERATING INSTRUCTIONS

Your Ultimate Unicorn Waterfall Bathroom Sink Faucet is designed for ease of use with its two-handle control system and elegant waterfall spout.

- **Water Flow:** To turn on the water, rotate the handle levers.
- **Temperature Control:** The left handle controls hot water, and the right handle controls cold water. Adjust both handles simultaneously to achieve your desired water temperature.
- **Waterfall Spout:** The wide spout creates a gentle, visually pleasing waterfall effect, providing a smooth and consistent flow of water.

Beautiful & Steady Laminar Stream



Image: The faucet delivering a beautiful and steady laminar stream of water into a glass.



Image: The wide waterfall spout providing ample coverage for hand washing.

2 LEVER HANDLES CONTROL



Image: Diagram illustrating how the two lever handles control hot and cold water flow for precise temperature adjustment.

MAINTENANCE AND CARE

To maintain the pristine appearance and functionality of your matte black faucet, follow these care guidelines:

- **Regular Cleaning:** Clean the faucet regularly with a soft, damp cloth. Avoid abrasive cleaners, harsh chemicals, or scouring pads, as these can damage the finish.
- **Spot Cleaning:** The matte black finish is designed to be anti-fingerprint and preservative. For spots or smudges, wipe gently with a clean, dry microfiber cloth.
- **Avoid Harsh Substances:** Do not use cleaners containing ammonia, bleach, acids, or abrasive agents. These can corrode the stainless steel and damage the finish.
- **Water Spots:** To prevent water spots, wipe the faucet dry after each use, especially in areas with hard water.



- Anti-Fingerprint
- Preservative

Image: The matte black finish is designed to be anti-fingerprint and preservative, simplifying cleaning and maintenance.

TROUBLESHOOTING

Problem	Possible Cause	Solution
Faucet Leaks	Loose connections, worn O-rings, improper sealant application.	Ensure all supply line connections and mounting nuts are tightened. Check O-rings for damage and replace if necessary. Reapply sealant if needed.
Low Water Flow	Clogged aerator, partially closed shut-off valves, low water pressure in home.	Remove and clean the aerator. Ensure water supply valves are fully open. Check household water pressure.
Water Temperature Issues	Incorrect handle adjustment, issues with water heater.	Adjust both hot and cold handles to find desired temperature. Check your water heater settings.
Pop-up Drain Leaks	Improper installation or sealing of the drain.	Ensure the drain assembly is correctly seated and tightened. Apply plumber's putty or silicone sealant as per drain instructions if necessary.

WARRANTY AND SUPPORT

Ultimate Unicorn is committed to providing high-quality products. For any questions, concerns, or assistance with your faucet, please contact Ultimate Unicorn customer service. We value your satisfaction and are here to help resolve any issues you may encounter.

Please refer to your purchase documentation for specific warranty details and contact information.