

ASTRO Gaming A30

ASTRO Gaming A30 Lightspeed Wireless Gaming Headset

THE MANDALORIAN EDITION INSTRUCTION MANUAL

Brand: ASTRO Gaming | Model: A30

Introduction

The ASTRO Gaming A30 Lightspeed Wireless Gaming Headset, The Mandalorian Edition, is designed for versatile gaming across multiple platforms. This headset offers simultaneous multi-device connectivity, allowing you to connect to various gaming devices and mobile platforms. It features both a built-in and a detachable boom microphone, USB-C charging, and a 3.5mm audio jack for flexible use. The headset is compatible with Xbox Series X|S, PlayStation 5, PlayStation 4, Nintendo Switch, PC, Mac, Android, and iOS/iPadOS devices.

This manual provides essential information for setting up, operating, and maintaining your A30 headset to ensure optimal performance and longevity.

What's in the Box

Your ASTRO Gaming A30 Lightspeed Wireless Gaming Headset package includes the following components:

- ASTRO A30 Wireless Gaming Headset (The Mandalorian Edition)
- LIGHTSPEED USB-A Wireless Transmitter (for Xbox Series X|S, PC/Mac)
- Detachable Boom Microphone
- 3.5mm Audio Cable
- USB-C Charging Cable
- Hard Shell Carrying Case
- Ear Cushions (pre-installed)

FLEXIBLE CONNECTIVITY



LIGHTSPEED WIRELESS, BLUETOOTH

AND 3.5 MM AUX

© &™ LUCASFILM LTD.

Image: ASTRO A30 Headset with all included accessories.

Your browser does not support the video tag.

Video: Unboxing and overview of the Astro A30 Gaming Headset components.

Setup

1. Initial Charge

Before first use, fully charge your A30 headset using the provided USB-C charging cable. Connect the USB-C end to the headset and the USB-A end to a power source (e.g., computer USB port, wall adapter).

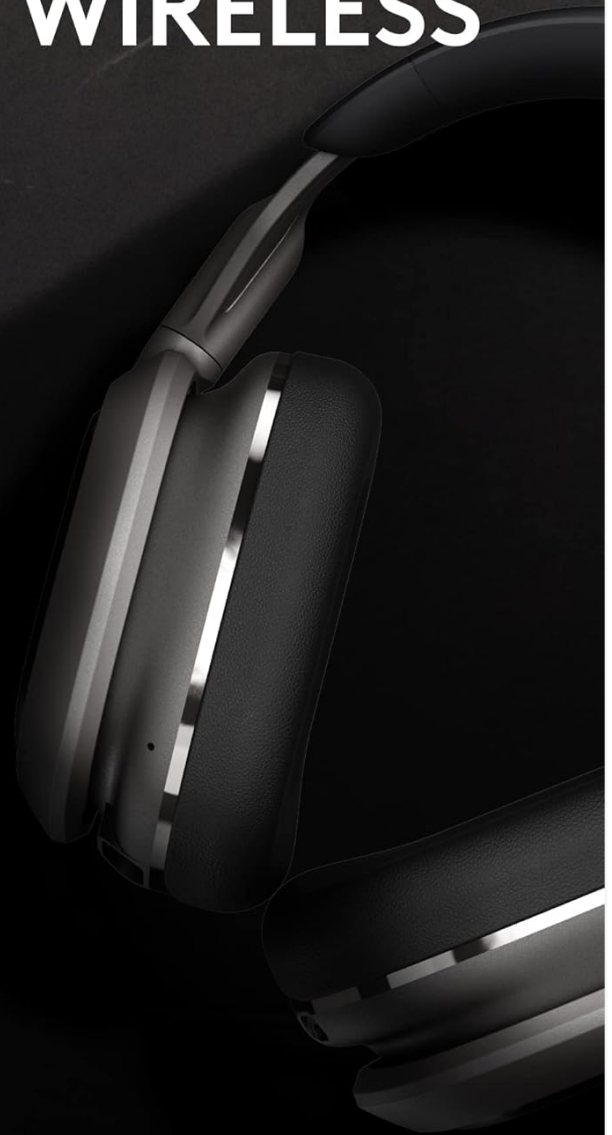
2. Connecting via LIGHTSPEED Wireless (2.4 GHz)

For optimal low-latency gaming performance on Xbox Series X|S, PC, or Mac, use the LIGHTSPEED USB-A Wireless Transmitter.

- Plug the LIGHTSPEED USB-A Wireless Transmitter into an available USB port on your gaming device.
- Power on your A30 headset. The headset should automatically connect to the transmitter.
- Ensure the transmitter is set to the correct platform mode (Xbox, PC, or PlayStation if using a compatible

dongle).

LIGHTSPEED WIRELESS



PRO-GRADE ULTRAFAST

CONNECTIVITY

© &™ LUCASFILM LTD.

Image: Lightspeed Wireless dongle for the ASTRO A30 Headset.

3. Connecting via Bluetooth

For mobile devices, Nintendo Switch, or other Bluetooth-enabled platforms:

- Power on your A30 headset.
- Press and hold the Bluetooth button on the headset until the LED indicator flashes rapidly, indicating pairing mode.
- On your device, go to Bluetooth settings and select "ASTRO A30" from the list of available devices.
- The LED on the headset will turn solid blue when successfully paired.

4. Connecting via 3.5mm Audio Cable

For wired connections to controllers or devices with a 3.5mm jack:

- Plug one end of the 3.5mm audio cable into the headset's 3.5mm port.
- Plug the other end into your device's 3.5mm audio jack.

Operating Instructions

1. Power On/Off

To power on the headset, press and hold the power button until the LED indicator illuminates. To power off, press and hold the power button until the LED turns off.

2. Volume and Game/Voice Balance Control

The headset features a joystick control for audio adjustments:

- **Volume Adjustment:** Push the joystick up or down to increase or decrease the overall volume.
- **Game/Voice Balance:** Push the joystick left or right to adjust the balance between game audio and voice chat. Pushing left increases game audio, pushing right increases voice chat.

3. Microphone Usage

The A30 headset offers two microphone options:

- **Detachable Boom Microphone:** For crystal-clear communication during gaming and streaming, attach the flexible boom microphone to the dedicated port on the headset.
- **Built-in Microphone:** When the boom microphone is detached, the headset automatically switches to the built-in microphone, ideal for on-the-go use or casual calls.
- **Mute Function:** A dedicated mute button is located on the headset for quick microphone muting.

DETACHABLE BOOM OR BUILT-IN MIC



CRYSTAL CLEAR COMMS DURING

GAMING AND STREAMING

© &™ Lucasfilm Ltd.

Image: ASTRO A30 Headset showing the detachable boom microphone.

Your browser does not support the video tag.

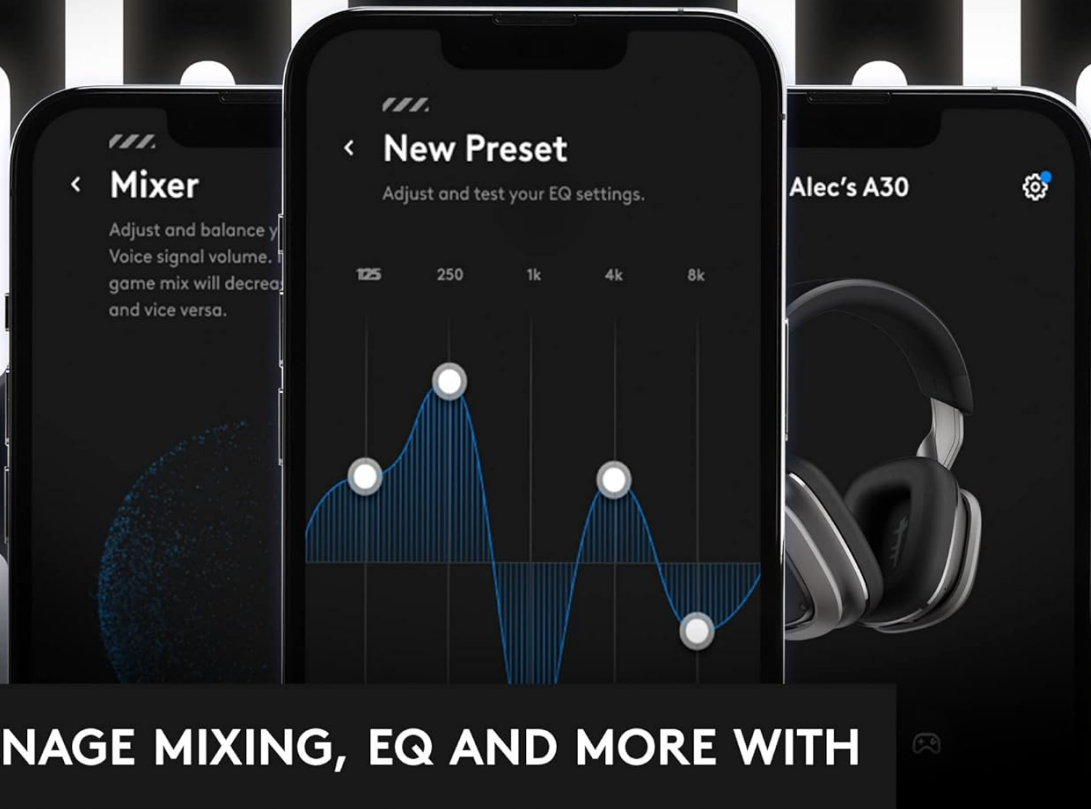
Video: User review demonstrating the flexible microphone and magnetic earcup removal.

4. Logitech G Mobile App

Enhance your audio experience by downloading the Logitech G mobile app (available on iOS and Android). The app allows you to:

- Customize EQ settings or choose from preset profiles.
- Adjust and balance game and voice signal volumes.
- Manage multi-device connections.

CONTROL YOUR AUDIO



MANAGE MIXING, EQ AND MORE WITH

LOGITECH G MOBILE APP

© &™ Lucasfilm Ltd.

Image: Screenshot of the Logitech G Mobile App for audio control.

Customization

The ASTRO A30 headset features magnetic earcup covers that can be easily removed and replaced. This allows for personalization with different designs or special editions, such as The Mandalorian Edition's unique speaker tags.



Image: Mandalorian Edition earcup with custom speaker tag.

Maintenance

To ensure the longevity and optimal performance of your ASTRO A30 headset, follow these maintenance guidelines:

- **Cleaning:** Use a soft, dry cloth to wipe down the headset. For ear cushions, gently wipe with a damp cloth and mild soap if necessary, then allow to air dry completely before reattaching. Avoid harsh chemicals or abrasive materials.
- **Storage:** When not in use, store the headset in its provided hard shell carrying case to protect it from dust, scratches, and impacts.
- **Cable Care:** Avoid sharp bends or excessive pulling on the cables to prevent damage.

Troubleshooting

If you encounter issues with your ASTRO A30 headset, try the following troubleshooting steps:

- **No Audio/Intermittent Audio:**
 - Ensure the headset is powered on and fully charged.
 - Verify the correct input/output device is selected in your system's audio settings.
 - For LIGHTSPEED, ensure the transmitter is securely plugged in and set to the correct platform.
 - For Bluetooth, ensure the headset is paired and connected to your device. Try unpairing and re-pairing.
 - For 3.5mm, ensure the cable is fully inserted into both the headset and the device.
- **Microphone Not Working:**
 - Check if the microphone mute button is engaged.
 - If using the detachable boom mic, ensure it is securely plugged in.
 - Verify microphone input settings on your gaming device or computer.
 - Test both the detachable and built-in microphones to isolate the issue.

- **Headset Not Turning Off:**
 - Perform a hard reset by holding the power button for an extended period (e.g., 10-15 seconds) until the headset powers down.
 - If connected via LIGHTSPEED, try unplugging and replugging the USB transmitter.
- **Connection Loss/Interference:**
 - Ensure the headset is within the specified wireless range (15m for LIGHTSPEED, 10m for Bluetooth).
 - Minimize physical obstructions between the headset and the transmitter/device.
 - Avoid areas with high electromagnetic interference.

Specifications

Feature	Specification
Model Name	Beskar
Connectivity Technology	Wireless (LIGHTSPEED 2.4 GHz, Bluetooth), Wired (3.5 mm Jack)
Wireless Range	15 m (LIGHTSPEED), 10 m (Bluetooth)
Audio Drivers	40 mm Moving Coil Dynamic
Frequency Response	20-20,000 Hz
Characteristic SPL	105 dBSPL/mW @1 KHz
Nominal Impedance	32 Ohms
Total Harmonic Distortion	<1% @1 mW 20-10 KHz
Battery Type	Lithium Polymer
Battery Life	Up to 27 Hours
Charging Time	Approx. 27 Hours (for full charge)
Microphone	Built-in & Detachable Boom Mic
Compatible Devices	Xbox Series X S, PlayStation 5, PlayStation 4, Nintendo Switch, PC, Mac, Mobile, Handheld Gaming Devices
Material	Metallic outer shell, Memory foam headband, Ear cup material (unspecified)
Item Weight	342 Grams (12.1 ounces)
Product Dimensions	163.6 x 194.5 x 81 mm (6.44 x 7.67 x 3.19 inches)

Warranty and Support

For warranty information, technical support, or further assistance with your ASTRO Gaming A30 Lightspeed

Wireless Gaming Headset, please visit the official ASTRO Gaming support website or contact their customer service. Keep your proof of purchase for warranty claims.