

## ASD A-JBS-8D20AC-WH

# ASD 8-Inch LED Square Recessed Lighting Instruction Manual

Model: A-JBS-8D20AC-WH

## 1. INTRODUCTION

Thank you for choosing the ASD 8-Inch LED Square Recessed Lighting fixture. This ultra-thin, canless downlight offers versatile illumination with 5 selectable color temperatures (2700K-5000K) and dimmable functionality. Designed for easy installation in various indoor settings, this manual provides essential information for safe and proper use. Please read these instructions thoroughly before installation and retain them for future reference.

## 2. SAFETY INFORMATION

**WARNING:** Risk of fire or electric shock. Installation requires knowledge of luminaires electrical systems. If not qualified, do not attempt installation. Contact a qualified electrician.

- Disconnect power at the fuse or circuit breaker before installation or servicing.
- Ensure the supply voltage is 120V AC.
- All wiring connections must be in accordance with local and National Electrical Code (NEC) standards.
- Do not make or alter any open holes in an enclosure of wiring or electrical components during kit installation.
- To prevent wiring damage or abrasion, do not expose wiring to edges of sheet metal or other sharp objects.
- This fixture is suitable for damp and wet locations.
- IC Rated: Suitable for direct contact with insulation.

## 3. WHAT'S IN THE BOX

- LED Recessed Mini Panel (8-Inch Square)
- Junction Box (Integrated)
- Template for 8-1/4 Inch (210 mm) Cutout



Image: The ASD 8-inch LED square recessed light, its integrated junction box, and product packaging.

## 4. SPECIFICATIONS

Feature	Detail
Model Name	LED Square Recessed Lights
Model Number	A-JBS-8D20AC-WH
Size	8 Inch
Power	20 Watts
Equivalent Wattage	70W Incandescent
Brightness	1743 Lumens
Color Temperature (CCT)	Selectable: 2700K, 3000K, 3500K, 4000K, 5000K
Color Rendering Index (CRI)	CRI90+
Dimmability	TRIAC Dimming (10%-100%)
Voltage	120 Volts

Feature	Detail
Material	Aluminum Housing, PC Lens
Product Dimensions	8.67"L x 8.67"W x 0.59"H
Cutout Size	8-1/4" (210 mm)
Lifespan	54,000 hours
Certifications	UL Listed, Energy Star Qualified
Installation Type	Flush Mount, Canless

## PRODUCT SPECIFICATION



Image: Detailed product specification diagram showing dimensions, power, brightness, and certifications.

## 5. INSTALLATION INSTRUCTIONS

## 5.1 Pre-Installation

- Turn off power at the circuit breaker or fuse box before starting installation.
- Ensure the installation location is suitable for a recessed fixture and meets local electrical codes.
- Use the provided template to mark the desired cutout size (8-1/4 inches or 210 mm) on the ceiling.

## 5.2 Wiring and Mounting

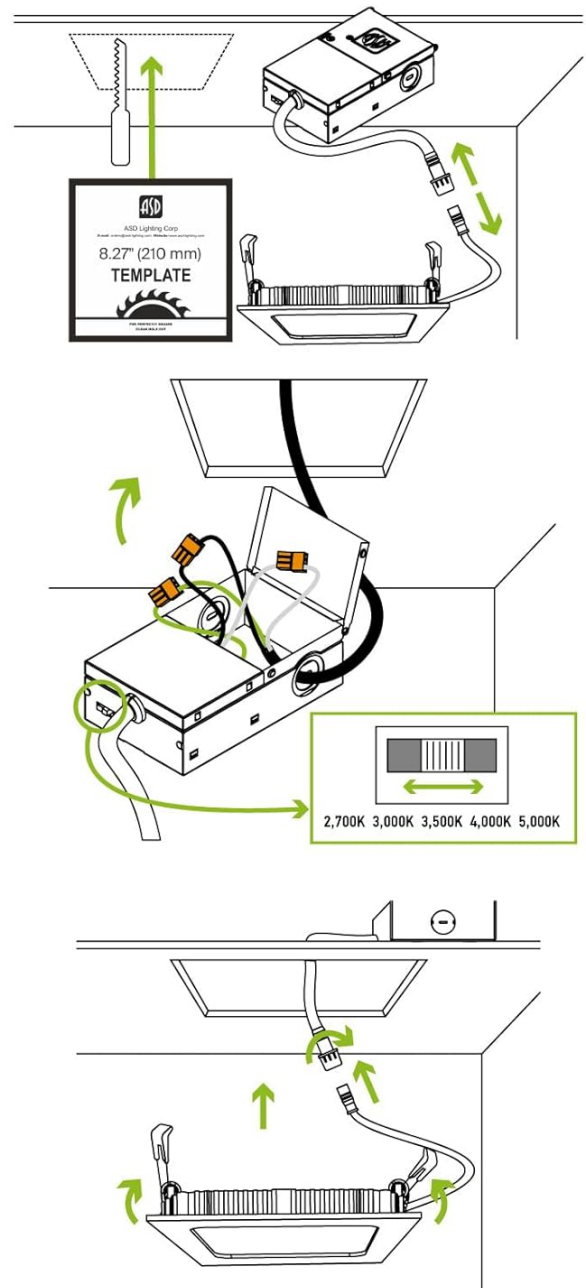
1. Cut a hole in the ceiling using the provided template. The recommended template size for installation is 8-1/4" (210 mm).
2. Open the junction box. Connect the electrical wires: Black to Black (Live), White to White (Neutral), and Green to Green (Ground). Secure connections using appropriate wire connectors.
3. Before closing the junction box, select the desired color temperature (2700K, 3000K, 3500K, 4000K, or 5000K) using the switch located on the side of the junction box.
4. Close the junction box securely.
5. Insert the junction box into the ceiling cutout, ensuring the connection cable for the fixture remains outside the hole.
6. Connect the fixture's cable to the junction box's cable using the plug-and-twist connector.
7. Push the spring-loaded clips on the fixture upwards and insert the fixture base into the mounting hole. Release the clips to secure the fixture firmly against the ceiling.

**1.** Use template to cut an appropriate sized hole. Disconnect the fixture from the junction box.



**2.** Open junction box. Connect the wires: Black to Black, White to White, Green to Green. Secure the connection with quick connector. Choose needed color temperature by adjusting the switch. Close the junction box.

**3.** Insert the junction box into the cut hole, leaving the connection cable outside. Connect the fixture to the Junction box inserting the cable and securing it with a cap. Push the spring loaded clips upwards and insert the fixture base into the mounting hole. Release the clips, so the fixture fits securely.



## INSTALLATION

Image: Visual guide detailing the steps for cutting the ceiling hole, wiring the junction box, and securing the light fixture.

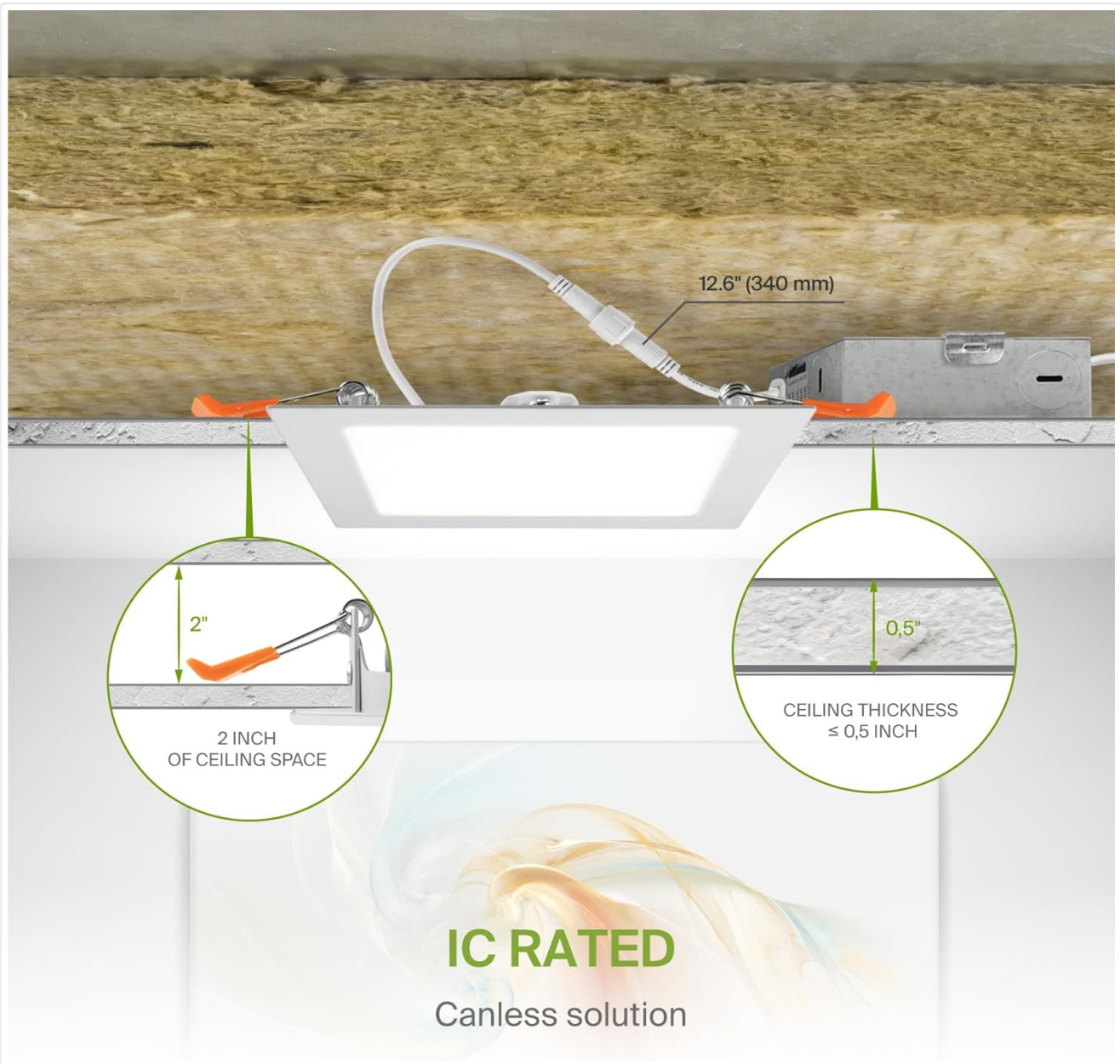


Image: Illustration of the IC-rated fixture installed in a ceiling, demonstrating the minimal 2-inch ceiling space requirement and suitability for direct contact with insulation.

## 6. OPERATING INSTRUCTIONS

### 6.1 Color Temperature Selection (5 CCT)

This fixture features 5 selectable color temperatures. Before final installation of the fixture into the ceiling, use the switch on the side of the integrated junction box to choose your preferred color temperature:

- **2700K:** Soft White
- **3000K:** Warm White
- **3500K:** Neutral White
- **4000K:** Cool White
- **5000K:** Daylight



Image: Visual representation of the five color temperature options and the switch on the junction box used for selection.

## 6.2 Dimming Functionality

The ASD 8-Inch LED Square Recessed Light is compatible with most standard TRIAC dimmers, allowing for smooth dimming from 10% to 100% without flicker or noise. Ensure your dimmer switch is compatible with LED lighting for optimal performance.

## 7. MAINTENANCE

To maintain the appearance and performance of your LED recessed light, follow these simple guidelines:

- Ensure power is turned off before cleaning.
- Clean the fixture with a soft, dry, or slightly damp cloth.
- Do not use harsh chemicals, abrasive cleaners, or solvents, as these may damage the finish or electrical components.
- No user-serviceable parts inside. Do not attempt to disassemble the fixture.

## 8. TROUBLESHOOTING

Problem	Possible Cause	Solution
Light does not turn on	No power supply; Loose wiring; Faulty fixture.	Check circuit breaker/fuse. Verify all wire connections are secure. If problem persists, contact customer support.
Light flickers or hums	Incompatible dimmer switch; Loose wiring.	Ensure dimmer is LED compatible. Check wiring connections. Replace dimmer if necessary.
Incorrect color temperature	CCT switch set incorrectly.	Before final installation, adjust the CCT switch on the junction box to the desired setting.
Light is not dimming properly	Incompatible dimmer switch; Dimmer range not set.	Use a TRIAC LED compatible dimmer. Some dimmers have adjustment screws to set the low-end dimming range.

## 9. WARRANTY INFORMATION

ASD provides a **5-year limited warranty** for this LED recessed lighting fixture. This warranty covers defects in materials and workmanship under normal use and service. For warranty claims or further details, please contact ASD customer support.

## 10. CUSTOMER SUPPORT

If you have any questions, require technical assistance, or need to make a warranty claim, please contact our customer support team. Our team is committed to responding to your concerns within 24 hours.

**Website:** [www.asd-lighting.com](http://www.asd-lighting.com)


**Email:** Refer to product packaging or website for current contact email.




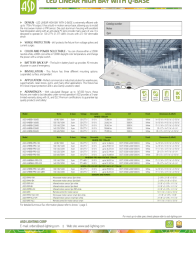

**Phone:** Refer to product packaging or website for current contact number.



© 2024 ASD Lighting Corp. All rights reserved.

### Related Documents - A-JBS-8D20AC-WH

	<p><a href="#">ASD LED Trimless Downlight - Product Specifications, Installation, and Ordering Guide</a></p> <p>Comprehensive guide to ASD LED Trimless Downlights, covering product features, detailed specifications, installation instructions, and ordering information. Features include color-selectable CCT, high CRI, IC and Wet Location ratings, and long lifespan.</p>
---	---

	<p><a href="#">ASD LED Round Downlight with Junction Box - Product Specifications and Installation Guide</a></p> <p>Detailed specifications, features, and installation instructions for the ASD LED Round Downlight with Junction Box. Learn about its design, energy efficiency, certifications, and ordering information.</p>
	<p><a href="#">ASD LED Downlight Retrofit Kit: Color Selectable, Dimmable, Energy Efficient Lighting</a></p> <p>Discover the ASD LED Downlight Retrofit Kit, featuring classic design, 5CCT color selectable options, smooth dimming, and easy installation. Ideal for wet locations, with a 50,000-hour lifespan and UL certification. Explore specifications and ordering information.</p>
	<p><a href="#">ASD New Construction Flat Mounting Plate Installation Guide and Specifications</a></p> <p>Comprehensive guide to the ASD New Construction Flat Mounting Plate, detailing its design, application, specifications, package contents, and installation steps for LED recessed lighting. Includes product legend and ordering information.</p>
	<p><a href="#">ASD LED Linear High Bay with Q-Base: Specifications and Installation Guide</a></p> <p>Comprehensive guide to ASD's LED Linear High Bay with Q-Base, detailing product specifications, features, installation instructions, and ordering information. Covers energy efficiency, selectable power and color temperature, motion sensor options, and battery backup.</p>
	<p><a href="#">ASD LED Wall Sconce   Modern Design, Color Selectable, Dimmable Lighting</a></p> <p>Explore the ASD LED Wall Sconce (Model ASD-LWS-11-D15CC series) for modern, energy-efficient lighting. Features color-selectable CCT, TRIAC dimming, 50,000-hour lifespan, ETL &amp; Energy Star certification.</p>