

DreamSky DS2203

DreamSky DS2203 Wooden Digital Alarm Clock with Wireless Charging - Instruction Manual

Model: DS2203 | Brand: DreamSky

INTRODUCTION

Thank you for choosing the DreamSky DS2203 Wooden Digital Alarm Clock. This device combines a digital alarm clock with convenient wireless and USB charging capabilities, designed for ease of use and modern aesthetics. Please read this manual thoroughly to ensure proper setup and operation.

KEY FEATURES

- **10W Fast Wireless Charger:** Efficiently charges compatible smartphones.
- **Large Digital Display:** 1.8-inch digits for clear visibility.
- **5-Level Adjustable Brightness:** Customize display intensity, including an OFF mode.
- **Extra USB Charging Port:** Conveniently charge additional devices.
- **5-Level Adjustable Alarm Volume:** Tailor alarm loudness to your preference.
- **Battery Backup:** Maintains time settings and triggers alarms during power outages.
- **Daylight Saving Time (DST) Function:** Manual adjustment for time changes.
- **Snooze Function:** Provides 9 extra minutes of sleep.

PACKAGE CONTENTS

The DreamSky DS2203 package includes the following items:

- DreamSky DS2203 Digital Alarm Clock
- AC Power Adapter (5V/2.1A)
- User Manual

Packing Included

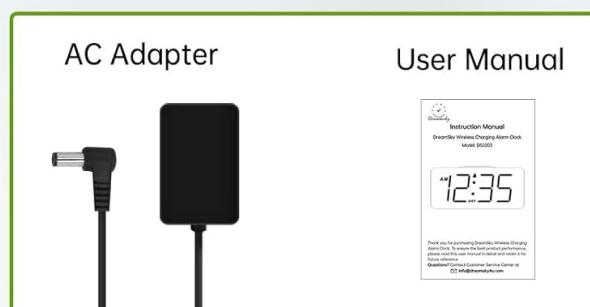


Image: The DreamSky DS2203 alarm clock, AC adapter, and user manual as included in the package.

SETUP

Power Connection

1. Connect the supplied AC power adapter to the DC 5V port on the back of the alarm clock.
2. Plug the adapter into a standard electrical outlet. The clock display will illuminate.



Image: The DreamSky DS2203 alarm clock is shown plugged into a wall outlet via its AC adapter. A smartphone is placed on the top wireless charging pad, and a smartwatch is connected to the USB port, demonstrating multiple charging options.

Battery Backup (Optional)

For backup functionality during power outages, install 2 AAA batteries (not included) into the battery compartment on the back of the clock. These batteries will maintain time settings and trigger alarms but will not power the display.

Video: This video demonstrates the backup battery function of the DreamSky DS2203 alarm clock. It shows that when the main power is disconnected, the alarm will still sound at the set time, but the digital display will not be illuminated.

OPERATING INSTRUCTIONS

Time Setting

1. Press and hold the 'TIME SET' button (M button) for 3 seconds to enter time setting mode. The hour digits will flash.
2. Use the 'VOL+' or 'VOL-' buttons to adjust the hour.
3. Press the 'TIME SET' button again to confirm the hour and move to minute setting. The minute digits will flash.
4. Use the 'VOL+' or 'VOL-' buttons to adjust the minutes.
5. Press the 'TIME SET' button one more time to confirm and exit time setting mode.

Video: This video demonstrates how to set the time on the DreamSky DS2203 alarm clock. It shows the user pressing the 'TIME SET' button to enter the setting mode and then using the adjustment buttons to set the current hour and minute.

Alarm Setting

The clock supports two independent alarms (Alarm 1 and Alarm 2).

1. Press and hold the 'ALARM SET' button (Alarm 1 or Alarm 2 icon) for 3 seconds to enter alarm setting mode. The alarm hour digits will flash.
2. Use the 'VOL+' or 'VOL-' buttons to adjust the alarm hour.
3. Press the 'ALARM SET' button again to confirm the hour and move to alarm minute setting. The alarm minute digits will flash.
4. Use the 'VOL+' or 'VOL-' buttons to adjust the alarm minutes.
5. Press the 'ALARM SET' button one more time to confirm and exit alarm setting mode.
6. To activate/deactivate an alarm, short press the corresponding 'ALARM SET' button. An alarm icon

will appear/disappear on the display.

Video: This video illustrates the process of setting an alarm on the DreamSky DS2203 alarm clock. It guides the user through entering the alarm setting mode, adjusting the hour and minute, and then activating the alarm.

Snooze Function

When the alarm sounds, tap the 'SNOOZE' button on the top of the clock to activate the snooze function. The alarm will pause for 9 minutes and then sound again.

Brightness Adjustment

The display brightness can be adjusted to 5 levels or turned off completely.

1. Short press the 'DIMMER' button (or 'SNOOZE' button, depending on model variation) to cycle through the brightness levels.
2. Select the desired brightness level for comfortable viewing.



Image: A visual representation of the DreamSky DS2203 alarm clock's 5-level brightness dimmer, showing the display from OFF to the brightest setting (L5).

12/24 Hour Format

To switch between 12-hour and 24-hour time formats, press the '12/24HR' button on the back of the clock.



Image: The DreamSky DS2203 alarm clock displaying time in both 12-hour (with AM/PM indicator) and 24-hour formats, illustrating the switchable feature.

Daylight Saving Time (DST)

To manually adjust for Daylight Saving Time, press the 'DST ON/OFF' button on the back of the clock. This will advance or set back the time by one hour.



Image: The DreamSky DS2203 alarm clock displaying the time with DST OFF and DST ON, showing the one-hour time difference.

Wireless Charging

Place your Qi-compatible smartphone on the wireless charging pad located on top of the clock. Ensure the phone is centered for optimal charging. A charging indicator will appear on the clock display.



Image: A smartphone is shown wirelessly charging on the top surface of the DreamSky DS2203 alarm clock, with a charging icon visible on the clock's display.

Video: This video highlights the 18W fast wireless charging capability of the DreamSky DS2203 alarm clock. It demonstrates a smartphone being placed on the charging pad and quickly initiating the charging process.

USB Charging

An additional USB port is located on the back of the clock for charging other devices that require a wired connection.



Image: The back of the DreamSky DS2203 alarm clock showing the USB charging port in use, with a cable connected to charge an external device.

MAINTENANCE

- Clean the clock surface with a soft, dry cloth.
- Avoid using abrasive cleaners or solvents.
- Keep the device away from water and high humidity.

TROUBLESHOOTING

Clock Display Not On

- Ensure the AC power adapter is securely plugged into both the clock and a working electrical outlet.
- Check if the display brightness is set to OFF. Adjust using the 'DIMMER' button.

Wireless Charging Not Working

- Verify your device is Qi-compatible.
- Ensure your device is centered on the wireless charging pad.
- Remove any thick phone cases or metallic objects that may interfere with charging.
- Confirm the clock is powered by the AC adapter, as battery backup does not support charging functions.

Alarm Not Sounding

- Check if the alarm is activated (alarm icon visible on display).
- Ensure the alarm volume is not set to the lowest level.
- If using battery backup, ensure batteries are fresh and correctly installed.


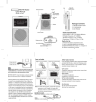
SPECIFICATIONS

Brand	DreamSky
Model Number	DS2203
Display Type	Digital
Product Dimensions	6.1"W x 2.8"H
Power Source	Corded Electric (AC Adapter Supplied)
Material	Wood
Wireless Charging Output	10W
USB Charging Output	5V/2.1A
Battery Backup	2 x AAA batteries (not included)

WARRANTY AND SUPPORT

The DreamSky DS2203 comes with a 1-year replacement warranty.
For technical support or warranty claims, please contact DreamSky customer service at:
info@dreamsky4u.com

Related Documents - DS2203

	<p>Dreamsky DS2203 Wireless Charging Alarm Clock Instruction Manual</p> <p>User manual for the Dreamsky DS2203 Wireless Charging Alarm Clock, detailing setup, time and alarm settings, DST, wireless charging, and button functions.</p>
	<p>DreamSky QL-955 Portable AM/FM Radio User Manual</p> <p>Comprehensive user manual for the DreamSky QL-955 portable AM/FM radio, detailing setup, operation, specifications, troubleshooting, battery safety, warranty, and FCC compliance.</p>



[DreamSky DS226 FM-AM Radio with Bluetooth - Instruction Manual](#)

Instruction manual for the DreamSky DS226 FM-AM Radio with Bluetooth. Learn how to operate, set up, and troubleshoot this portable radio, including safety precautions and specifications.