

Cherry JK-9100US-2

Cherry KW 9100 Slim Wireless Keyboard User Manual

Model: JK-9100US-2

1. INTRODUCTION

Thank you for choosing the Cherry KW 9100 Slim Wireless Keyboard. This manual provides essential information for setting up, operating, and maintaining your new keyboard. The KW 9100 Slim is designed for both work and home office environments, offering flexible connectivity options and a comfortable typing experience with its silent SX Scissor Mechanism.



Figure 1.1: Top-down view of the Cherry KW 9100 Slim Wireless Keyboard, showcasing its full layout and sleek design.

2. PACKAGE CONTENTS

Please verify that all items are present in your package:

- Cherry KW 9100 Slim Wireless Keyboard
- USB Cable (USB-A to USB-C)
- USB Receiver (2.4 GHz RF dongle)
- Instruction Manual (this document)
- Magnetic Support Bar (pre-attached or separate)

3. KEY FEATURES

- **Dual Connectivity:** Seamlessly switch between wireless RF (2.4 GHz) and Bluetooth transmission modes.
- **Rechargeable Battery:** Built-in lithium rechargeable battery with USB-C connection for convenient charging.
- **SX Scissor Mechanism:** Cherry's proprietary low-profile scissor technology ensures a quiet and precise typing experience.
- **Slim and Stable Design:** Features a thin profile with a built-in metal plate for maximum stability and rigidity.

- **Adjustable Typing Angle:** Includes a removable magnetic support bar for a steeper typing angle preference.
- **Status LEDs:** Integrated LEDs for CAPS LOCK, NUM, and SCROLL keys.



Figure 3.1: Angled view highlighting the slim profile and key layout of the keyboard.



Figure 3.2: Close-up view of the keys, illustrating the low-profile design and quiet SX Scissor Mechanism.

4. SETUP AND CONNECTION

4.1 Charging the Keyboard

Before first use, it is recommended to fully charge the keyboard.

1. Connect the supplied USB-A to USB-C cable to the USB-C port on the keyboard.
2. Connect the other end of the cable to a USB-A port on your computer or a compatible USB power adapter.
3. The charging indicator LED will illuminate. The keyboard can be used while charging.



Figure 4.1: Location of the USB-C charging port on the Cherry KW 9100 Slim keyboard.

4.2 Connecting via 2.4 GHz RF Wireless

For a stable and fast wireless connection, use the included USB receiver.

1. Locate the USB receiver (dongle) in the package.

2. Plug the USB receiver into an available USB-A port on your computer.
3. On the keyboard, locate the connectivity switch (usually on the back or side) and set it to the "RF" or 2.4 GHz icon position.
4. The keyboard should automatically connect to your computer.

4.3 Connecting via Bluetooth

The keyboard supports Bluetooth connectivity for devices with Bluetooth capabilities.

1. On the keyboard, set the connectivity switch to the "Bluetooth" icon position.
2. The Bluetooth indicator LED on the keyboard will start blinking, indicating it's in pairing mode.
3. On your computer or device, open Bluetooth settings.
4. Search for new devices and select "Cherry KW 9100 Slim" from the list.
5. Follow any on-screen prompts to complete the pairing process.

4.4 Attaching the Magnetic Support Bar

The keyboard comes with a magnetic support bar that can be attached to adjust the typing angle.

1. Locate the magnetic support bar.
2. Align the bar with the magnetic strip on the underside of the keyboard.
3. The magnets will snap the bar into place, providing an elevated typing angle.
4. To remove, simply pull the bar away from the keyboard.



Figure 4.2: Side view of the keyboard demonstrating the elevated angle with the magnetic support bar attached.



Figure 4.3: Illustration of how the magnetic support bar attaches to the keyboard's underside.

5. OPERATION

5.1 Basic Usage

Once connected, the Cherry KW 9100 Slim functions as a standard keyboard. Type as you normally would.

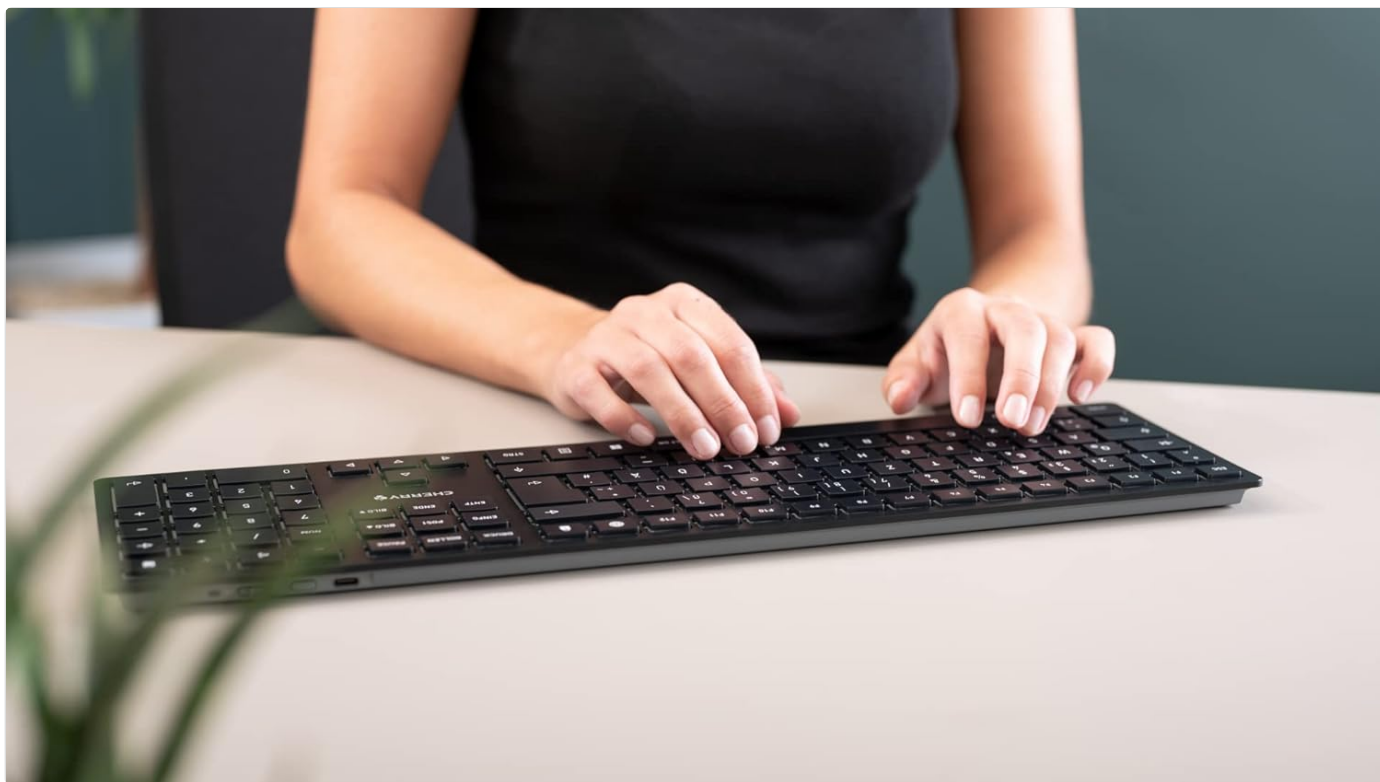


Figure 5.1: A user demonstrating typing on the Cherry KW 9100 Slim keyboard in an office setting.

5.2 Function Keys (F-Keys)

The F-keys (F1-F12) on the top row may have secondary functions accessible by pressing the **Fn** key simultaneously. Refer to the keycap legends for specific functions such as media control, volume adjustment, or brightness control.

5.3 Status LEDs

The keyboard features indicator LEDs for:

- **CAPS LOCK:** Illuminates when Caps Lock is active.
- **NUM:** Illuminates when Num Lock is active.
- **SCROLL:** Illuminates when Scroll Lock is active.
- **Battery/Charging:** Indicates charging status or low battery.

6. MAINTENANCE

6.1 Cleaning the Keyboard

To maintain the keyboard's appearance and functionality:

- Disconnect the keyboard from your computer before cleaning.
- Use a soft, lint-free cloth slightly dampened with water or a mild cleaning solution.
- Avoid excessive moisture and do not spray cleaners directly onto the keyboard.
- For dust and debris between keys, use compressed air.

6.2 Battery Care

The built-in rechargeable battery is designed for long life.

- Recharge the keyboard when the battery indicator shows low power.
- Avoid fully discharging the battery frequently to prolong its lifespan.

- Store the keyboard in a cool, dry place if not used for extended periods.

7. TROUBLESHOOTING

Problem	Possible Cause	Solution
Keyboard not responding (RF)	USB receiver not plugged in; keyboard not in RF mode; low battery.	Ensure USB receiver is securely plugged in. Set keyboard switch to RF mode. Charge the keyboard. Try a different USB port.
Keyboard not responding (Bluetooth)	Keyboard not in Bluetooth mode; not paired; out of range; low battery.	Set keyboard switch to Bluetooth mode. Ensure keyboard is paired with the device. Move keyboard closer to the device. Charge the keyboard.
Keys are sticky or unresponsive	Debris under keys; liquid spill.	Clean the keyboard using compressed air. If liquid spill, disconnect immediately and allow to dry completely before use. Do not attempt to disassemble.
Battery not charging	Faulty USB cable or port; power source issue.	Try a different USB cable and/or USB port. Ensure the power source is active.

8. SPECIFICATIONS

Feature	Detail
Model Number	JK-9100US-2
Connectivity	Bluetooth, 2.4 GHz RF (with USB receiver), USB-C (for charging)
Keyboard Description	Wireless, Full-size
Key Mechanism	SX Scissor Mechanism
Number of Keys	108
Color	Black
Material	Metal (built-in plate)
Item Weight	1.49 pounds (approx. 676 grams)
Package Dimensions	18.19 x 6.69 x 1.26 inches
Manufacturer	CHERRY
Compatible Devices	PC
Recommended Uses	Gaming, Office, Work







9. WARRANTY AND SUPPORT

For warranty information and technical support, please refer to the official Cherry website or contact Cherry customer service. Keep your proof of purchase for warranty claims.

Official Cherry Website: www.cherry.de/en/

Customer Service: Refer to the contact section on the official website for regional support details.

Related Documents - JK-9100US-2

	<p>CHERRY KC 6000 SLIM Keyboard: User Manual, Setup, and Technical Specifications</p> <p>Detailed user guide for the CHERRY KC 6000 SLIM keyboard. Learn about setup, safety precautions, ergonomic tips, cleaning, troubleshooting, technical data, and compliance information.</p>
	<p>CHERRY KC 6000 SLIM FOR MAC Keyboard User Manual</p> <p>Get detailed instructions for the CHERRY KC 6000 SLIM FOR MAC keyboard. This manual covers setup, safety, ergonomic tips, macOS zoom function, cleaning, troubleshooting, technical specifications, and contact information for CHERRY.</p>
	<p>CHERRY DW 9100 SLIM Wireless Keyboard and Mouse User Guide</p> <p>Comprehensive user guide for the CHERRY DW 9100 SLIM wireless keyboard and mouse, covering setup, operation, safety, and troubleshooting. Learn how to connect via Bluetooth or RF, charge the devices, and optimize your workspace.</p>
	<p>CHERRY DW 9100 SLIM Wireless Keyboard and Mouse User Manual</p> <p>Comprehensive user guide for the CHERRY DW 9100 SLIM wireless keyboard and mouse set, covering setup, operation, troubleshooting, and technical specifications. Supports Bluetooth and RF connections.</p>
	<p>CHERRY DW 9100 SLIM Wireless Keyboard and Mouse Combo - User Manual</p> <p>Comprehensive user manual for the CHERRY DW 9100 SLIM wireless keyboard and mouse, covering setup, operation, troubleshooting, and technical specifications. Supports Bluetooth and RF connections.</p>
	<p>CHERRY KW 7100 MINI BT FOR MAC Bedienungsanleitung</p> <p>Umfassende Anleitung für die CHERRY KW 7100 MINI BT FOR MAC Tastatur, inklusive Einrichtung, Bluetooth-Verbindung, Funktionen und Fehlerbehebung. Erfahren Sie mehr auf www.cherry.de.</p>