

ZEYUAN PR3000

ZEYUAN PR3000 Trail Camera User Manual

Comprehensive instructions for setup, operation, and maintenance of your ZEYUAN PR3000 36MP 1080P Night Vision Trail Camera.

1. INTRODUCTION

Thank you for choosing the ZEYUAN PR3000 Trail Camera. This multifunctional camera is designed for outdoor hunting, home monitoring, farm surveillance, and wildlife observation. It features 36MP image resolution, 1080P video recording, IP66 waterproofing, and 34 infrared lights for clear day and night vision. Please read this manual carefully before using the camera to ensure proper operation and to maximize its performance.

2. PRODUCT OVERVIEW AND COMPONENTS

The ZEYUAN PR3000 Trail Camera is built for durability and performance in various environments. Familiarize yourself with its main components:

Product Analysis



Figure 2.1: Product Component Analysis. This diagram highlights key parts such as the Infrared Lights, Lens, PIR Sensors, and the Working Indicator Light, essential for understanding the camera's functionality.

Key Components:

- **Infrared Lights:** 34 units for night vision.
- **Lens:** Captures images and videos.
- **PIR Sensors:** Passive Infrared Sensors detect motion to trigger recording.
- **Working Indicator Light:** Indicates camera status.
- **2.0-inch Screen:** For viewing settings and playback.

Package Contents:

Product list

		
Camera	Power Cable	Manual
		
Package	Strap	USB Cable

Figure 2.2: Package Contents. The box includes the ZEYUAN PR3000 camera, a power cable, this user manual, mounting straps, and a USB cable for data transfer.

- 1 x ZEYUAN PR3000 Trail Camera
- 1 x Power Cable
- 1 x User Manual (this document)
- 1 x Straps for mounting
- 1 x USB Cable

3. SETUP

Follow these steps to prepare your camera for use:

1. **Install Batteries:** Open the battery compartment and insert 8 AA batteries (not included), ensuring correct polarity. Alternatively, connect a 5V DC power source using the provided power cable.
2. **Insert Memory Card:** Insert a compatible SD card (not included) into the designated slot. Ensure the card is formatted before first use (refer to the "Operating" section for formatting instructions).
3. **Power On:** Switch the camera to the "ON" position. The indicator light will illuminate briefly.
4. **Initial Settings:** Access the camera's menu via the 2.0-inch screen to set the date, time, language,

and desired operating mode (Image, Video, or Image+Video).

5. **Mounting:** Use the included straps to securely mount the camera to a tree or pole. Ensure the camera is positioned to capture the desired area without obstructions.



Figure 3.1: Camera Setup Example. The image shows the ZEYUAN PR3000 camera securely attached to a tree, ready for outdoor monitoring.

4. OPERATING INSTRUCTIONS

The ZEYUAN PR3000 offers various modes and settings for optimal performance.

4.1. Operating Modes

- **Image Mode:** Captures still photographs. Image sizes can be set to 36MP, 12MP, 8MP, 5MP, or 3.0MP.
- **Video Mode:** Records video clips at 1080P/30FPS resolution.
- **Image + Video Mode:** Captures a still image followed by a video clip when triggered.

4.2. Trigger Time and Detection

The camera features a rapid trigger time of 0.2 to 0.6 seconds, ensuring that fast-moving subjects are captured effectively.

Short Trigger Time

The trigger time is 0.2~0.6S, quick to take pictures and videos, will not miss every interesting moment.



Figure 4.1: Short Trigger Time. The camera's quick response ensures that no interesting moments are missed, capturing images or videos within 0.2 to 0.6 seconds of detection.

4.3. Day and Night Vision

Equipped with 34 infrared lights, the camera provides clear images and videos both during the day and at night, even in completely dark environments.

Day&Night Use

This camera can take photos and 1080P videos for you at day and night, let you get the clearer photos and videos.

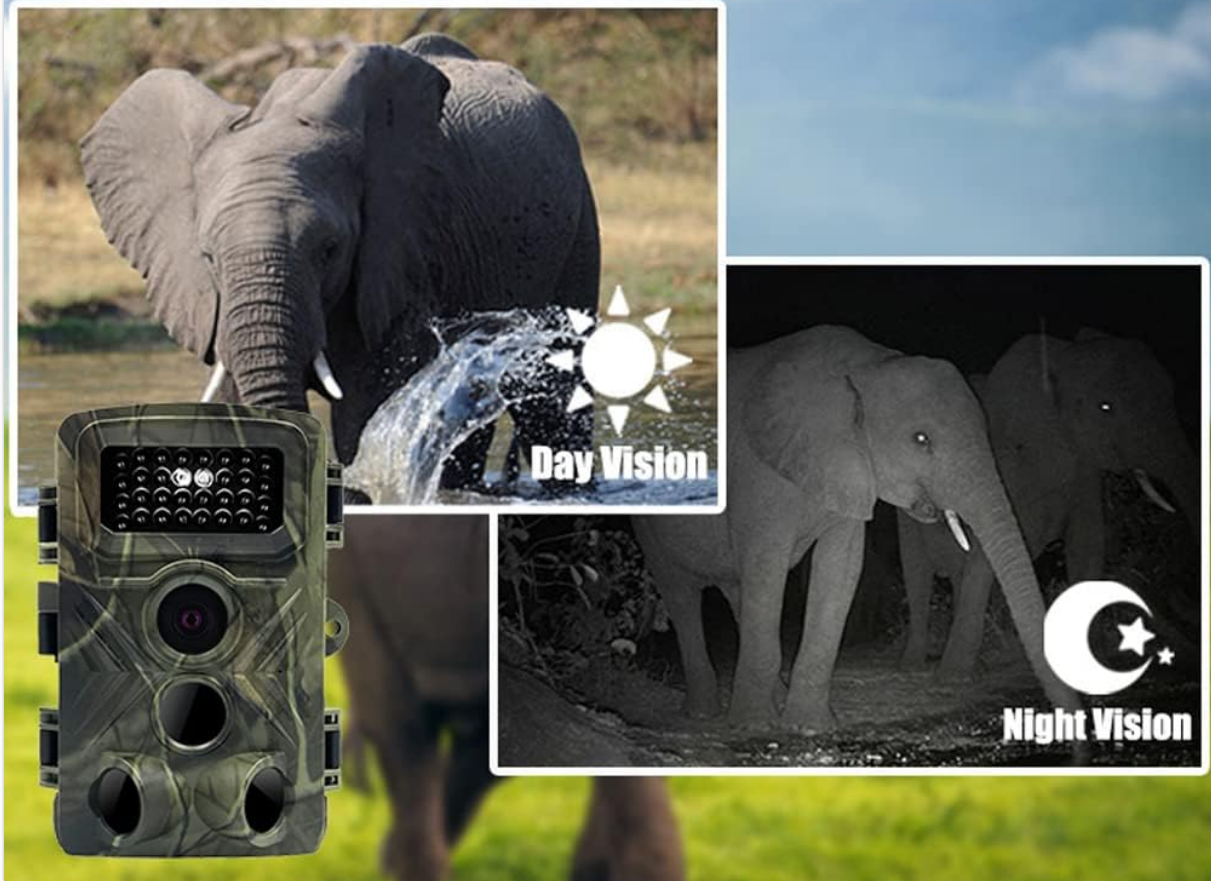


Figure 4.2: Day & Night Use. This image demonstrates the camera's ability to capture vibrant color photos and videos during the day and clear monochrome footage at night using its infrared illumination.

34 Pcs IR Lights

Even in a completely black environment, clear images can be taken.



Figure 4.3: 34 IR Lights. The camera's 34 infrared LEDs ensure that clear images can be captured even in environments with no ambient light.

4.4. Applications

The ZEYUAN PR3000 is versatile and suitable for a wide range of applications:

- Outdoor hunting activities
- Villa house monitoring
- Orchard farm monitoring
- Wildlife photography and observation

Suitable for many occasions

Make your life more secure and convenient



Figure 4.4: Suitable for Many Occasions. This collage illustrates the diverse uses of the trail camera, from security monitoring to wildlife observation.

5. MAINTENANCE

Proper maintenance ensures the longevity and optimal performance of your camera.

- **Cleaning:** Use a soft, dry cloth to clean the camera body and lens. Avoid abrasive cleaners or solvents.
- **Waterproofing:** The camera is IP66 waterproof, meaning it is protected against powerful water jets. However, avoid submerging the camera in water. Ensure all covers and seals are properly closed before exposing it to rain or moisture.
- **Battery Care:** Remove batteries if the camera will not be used for an extended period to prevent leakage.
- **Storage:** Store the camera in a cool, dry place away from direct sunlight when not in use.

6. TROUBLESHOOTING

If you encounter issues with your ZEYUAN PR3000 camera, refer to the following common problems and solutions:

Problem	Possible Cause / Solution
Camera not powering on	Check battery installation and charge level. Ensure 8 AA batteries are correctly inserted or 5V DC power is connected.
Poor image/video quality at night	Ensure the infrared lights are not obstructed. Check the camera's night vision settings.
Camera not triggering	Verify PIR sensor sensitivity settings. Ensure there are no obstructions in front of the sensors. Check battery level.
Forgotten password	If you have set a password and forgotten it, please refer to the full user manual for reset procedures or contact customer support.
SD card error	Ensure the SD card is correctly inserted and formatted. Try a different compatible SD card.

7. SPECIFICATIONS

Feature	Detail
Brand	ZEYUAN
Model	PR3000
Image Resolution	36MP / 12MP / 8MP / 5MP / 3.0MP
Video Resolution	1080P/30FPS
Waterproof Rating	IP66
Infrared LEDs	34 pieces
Trigger Time	0.2 - 0.6 seconds
Screen Size	2.0 inches
Power Supply	8 x AA batteries (not included) or 5V DC
Material	Acrylonitrile Butadiene Styrene (ABS)
Night Vision Range	10 Meters
Dimensions	16 x 11.8 x 10 cm (6.3 x 4.6 x 3.9 inches)

8. WARRANTY AND SUPPORT

ZEYUAN products are manufactured to high-quality standards. For warranty information, please refer to the documentation provided at the time of purchase or contact your retailer. Extended protection plans may be available separately.

For technical support, troubleshooting assistance beyond this manual, or inquiries regarding your product, please contact ZEYUAN customer service through your purchase platform or the official ZEYUAN website.

