

Vidal Sassoon VSI-2513/KJ

Vidal Sassoon 25mm Curl Hair Iron VSI-2513/KJ Instruction Manual

Model: VSI-2513/KJ

1. INTRODUCTION

Thank you for purchasing the Vidal Sassoon 25mm Curl Hair Iron, Model VSI-2513/KJ. This appliance is designed to help you create beautiful curls with ease. Please read this instruction manual thoroughly before use to ensure safe and optimal performance. Keep this manual for future reference.

2. SAFETY INFORMATION

To reduce the risk of electric shock, burns, fire, or injury, always follow these basic safety precautions:

- Do not use this appliance near water, such as in a bathtub, shower, or sink.
- Always unplug the appliance immediately after use.
- Do not reach for an appliance that has fallen into water; unplug it immediately.
- Never block the air openings of the appliance or place it on a soft surface, such as a bed or couch, where the air openings may be blocked.
- Keep the cord away from heated surfaces. Do not wrap the cord around the appliance.
- Never use while sleeping.
- Never drop or insert any object into any opening.
- Do not use outdoors or operate where aerosol (spray) products are being used or where oxygen is being administered.
- The appliance is hot when in use. Do not let eyes or bare skin touch heated surfaces.
- Do not place the heated appliance directly on any surface while it is hot or plugged in. Use the integrated safety stand.
- This appliance is for household use only.

3. PRODUCT FEATURES

The Vidal Sassoon VSI-2513/KJ Curl Hair Iron is designed with advanced features for effective and safe hair styling:

- **Ceramic Coating:** Ensures gentle and fast heat transfer to hair, minimizing damage and providing smooth styling.
- **25mm Pipe Diameter:** Ideal for creating beautiful wavy and firm curls.
- **Temperature Control:** Adjustable temperature settings from approximately 100°C to 200°C to suit various hair types and styling needs.
- **Automatic Power-Off:** For enhanced safety, the appliance automatically turns off after approximately 60 minutes of inactivity.
- **Universal Voltage (AC100-240V):** Compatible with power outlets worldwide, making it suitable for international travel (a plug adapter may be required).
- **Safety Stand:** An integrated stand allows for safe placement of the hot iron during and after use.
- **Swivel Cord:** Prevents tangling and offers flexibility during styling.
- **Compact Size:** Designed for easy handling and storage.

VS
SASSOON

Compact

にぎりやすい
コンパクトサイズ
直径(約) 2.5cm

※ハンドル部



Image: The compact design of the curling iron, highlighting its easy-to-grip handle and 2.5cm diameter.

Temperature

温度調節ダイヤル

約100~200℃

※周囲温度30℃の場合



World voltage

海外使用 OK ※100-240V地域対応
※市販のプラグアダプターが必要

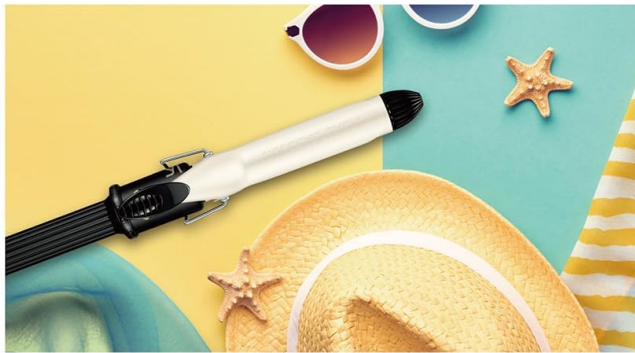


Image: The temperature control dial, allowing adjustment from 100-200°C, and indicating world voltage compatibility.

Pipe diameter

パイプ直径

25mm

毎日のカールスタイルに
使いやすいサイズ



Image: The 25mm pipe diameter, suitable for daily curl styles, demonstrated by a user.

Auto off

自動電源 OFF

Coating

なめらかな使い心地

セラミック

コーティング

Swivel cord

絡まりにくい

回転式コード



Image: Key features including automatic power-off, smooth ceramic coating, and a tangle-free swivel cord.

4. SETUP

1. **Unpack:** Carefully remove the curling iron from its packaging. Retain the packaging for storage or future transport.
2. **Inspect:** Check the appliance for any signs of damage. Do not use if damaged.
3. **Plug In:** Insert the power cord into a suitable electrical outlet. Ensure the voltage matches the appliance's requirements (AC100-240V). For international use, a plug adapter may be necessary.
4. **Power On:** Turn on the appliance using the power switch.
5. **Set Temperature:** Adjust the temperature dial to your desired heat setting (100-200°C). Allow the iron to heat up completely before use.

5. OPERATING INSTRUCTIONS

Follow these steps to achieve desired curl styles:

1. **Prepare Hair:** Ensure your hair is clean, dry, and thoroughly brushed to remove any tangles.
2. **Section Hair:** Divide your hair into manageable sections, typically 3-4 sections per side, using clips if necessary.

3. **Curl Hair Ends:** Take a section of hair and curl the ends inwards.
4. **Face-Framing Curls:** For the sections around your face, curl them outwards.
5. **Mixed Curls:** For the remaining sections, alternate between inward and outward curls to create a natural, voluminous look. Repeat on the other side of your head.
6. **Front Hair Sides:** Curl the side sections of your front hair outwards. Repeat on the opposite side.
7. **Finish:** Once all sections are curled, gently run your fingers through your hair or apply a small amount of hair oil to set the style and add shine.

Visual Guide: Hair Styling with VSI-2513/KJ

Your browser does not support the video tag.

Video: A step-by-step demonstration of how to use the Vidal Sassoon 25mm Curl Hair Iron to create a mixed curl style. The video shows brushing hair, curling ends inwards, face-framing sections outwards, alternating inward and outward curls, and finishing with hair oil.

6. MAINTENANCE AND CARE

- **Cleaning:** Ensure the appliance is unplugged and completely cool before cleaning. Wipe the ceramic plates and exterior with a soft, damp cloth. Do not use abrasive cleaners or immerse the appliance in water.
- **Storage:** Store the appliance in a cool, dry place, away from direct sunlight and moisture. Do not wrap the power cord tightly around the appliance, as this can damage the cord.
- **Cord Care:** Regularly check the power cord for any damage. If the cord is damaged, discontinue use and contact customer support.

7. TROUBLESHOOTING

If you encounter any issues with your curling iron, refer to the following common problems and solutions:

- **Appliance does not heat up:**
 - Ensure the power cord is securely plugged into a working electrical outlet.
 - Check if the power switch is in the 'ON' position.
 - Verify that the temperature setting is not at the lowest point.
- **Hair is not curling effectively:**
 - Ensure your hair is completely dry before styling.
 - Use appropriate temperature for your hair type. Finer hair may require lower temperatures, while thicker hair may need higher settings.
 - Take smaller sections of hair for better curl formation.
 - Hold the hair around the barrel for a sufficient amount of time (typically 5-10 seconds, depending on hair type and desired curl).
- **Appliance automatically turns off:**
 - This is a safety feature. The appliance is designed to turn off after approximately 60 minutes of inactivity. Simply turn it back on if you wish to continue styling.

If the problem persists, please contact customer support.

8. SPECIFICATIONS

Feature	Specification
Brand	Vidal Sassoon
Model Number	VSI-2513/KJ
Pipe Diameter	25mm
Heater Surface Material	Ceramic Coating
Temperature Adjustment	Approx. 100-200°C
Power Supply	AC100-240V 50/60Hz (Universal Voltage)
Power Consumption	53W
Automatic Power-Off	Approx. 60 minutes
Cord Length	Approx. 1.9m
Product Dimensions	36cm (Length) x 4.5cm (Width) x 7.8cm (Height)
Product Weight	0.37 kg
Color	Black

9. WARRANTY AND SUPPORT

This Vidal Sassoon VSI-2513/KJ Curl Hair Iron comes with a **1-year warranty** from the date of purchase. Please retain your proof of purchase for warranty claims.

For technical support, troubleshooting assistance beyond what is provided in this manual, or warranty service, please contact your retailer or the official Vidal Sassoon customer service in your region. Contact information can typically be found on the product packaging or the brand's official website.