

manuals.plus /

- › [SkyGive](#) /
- › [SkyGive Retro Wireless Keyboard and Mouse Combo User Manual](#)

## SkyGive Retro Wireless Combo B0BKLP573F

# SkyGive Retro Wireless Keyboard and Mouse Combo User Manual

Model: Retro Wireless Combo B0BKLP573F

## 1. PRODUCT OVERVIEW

The SkyGive Retro Wireless Keyboard and Mouse Combo provides a comfortable and efficient input solution for various computing environments. This combo features a full-size keyboard with retro-style round keycaps and a low-noise ergonomic mouse, designed for seamless wireless connectivity.



Image 1.1: The SkyGive Retro Wireless Keyboard and Mouse Combo, showcasing the keyboard, mouse, and the two included USB receivers (one standard USB-A, one Type-C adapter).

## Key Features:

- **2.4GHz Wireless Technology:** Ensures a stable and reliable connection with a transmission distance of up to 10 meters.
- **Retro Oval-Keys:** Unique and comfortable typing experience.
- **Low-Noise Design:** Quiet operation for both keyboard and mouse.
- **Ergonomic Mouse:** Designed for comfort during extended use.
- **Plug and Play:** No additional drivers or software required.
- **Intelligent Power Saving:** Automatic sleep mode to conserve battery life.



2.4GHz wireless technology



10M transmission distance



Strong compatibility



Retro Oval-Keys



1 Mbps High-speed transmission



Stylish and Slim



Smart power saving



Plug and play

Image 1.2: Visual representation of the product's key features, including 2.4GHz wireless, 10M transmission, strong compatibility, retro oval-keys, 1Mbps high-speed transmission, stylish and slim design, smart power saving, and plug-and-play functionality.

## 2. SETUP INSTRUCTIONS

Follow these steps to set up your SkyGive Wireless Keyboard and Mouse Combo.

### 2.1 Battery Installation

1. Locate the battery compartments on the underside of both the keyboard and the mouse.

2. Insert the included AA batteries into the respective compartments, ensuring correct polarity (+/-). The keyboard requires 1 AA battery, and the mouse requires 1 AA battery.
3. Close the battery compartment covers securely.

## 2.2 Connecting the USB Receiver

1. The USB receiver is stored in the battery compartment of the mouse. Carefully remove it.
2. Plug the USB receiver into an available USB-A port on your computer.
3. If your computer only has USB-C ports, use the provided Type-C adapter. Plug the standard USB receiver into the Type-C adapter, then plug the adapter into your computer's USB-C port. **Note: The Type-C adapter does not function alone; it must be used with the USB receiver.**
4. Your computer should automatically detect and install the necessary drivers. No additional software installation is required.



Image 2.1: Illustration of the keyboard and mouse dimensions, highlighting the location of the USB receiver within the mouse's battery compartment.

## 3. OPERATING INSTRUCTIONS

### 3.1 Keyboard Usage

The full-size keyboard offers a comfortable typing experience with its retro oval-keys and low-noise design. It includes a numeric keypad for data entry.

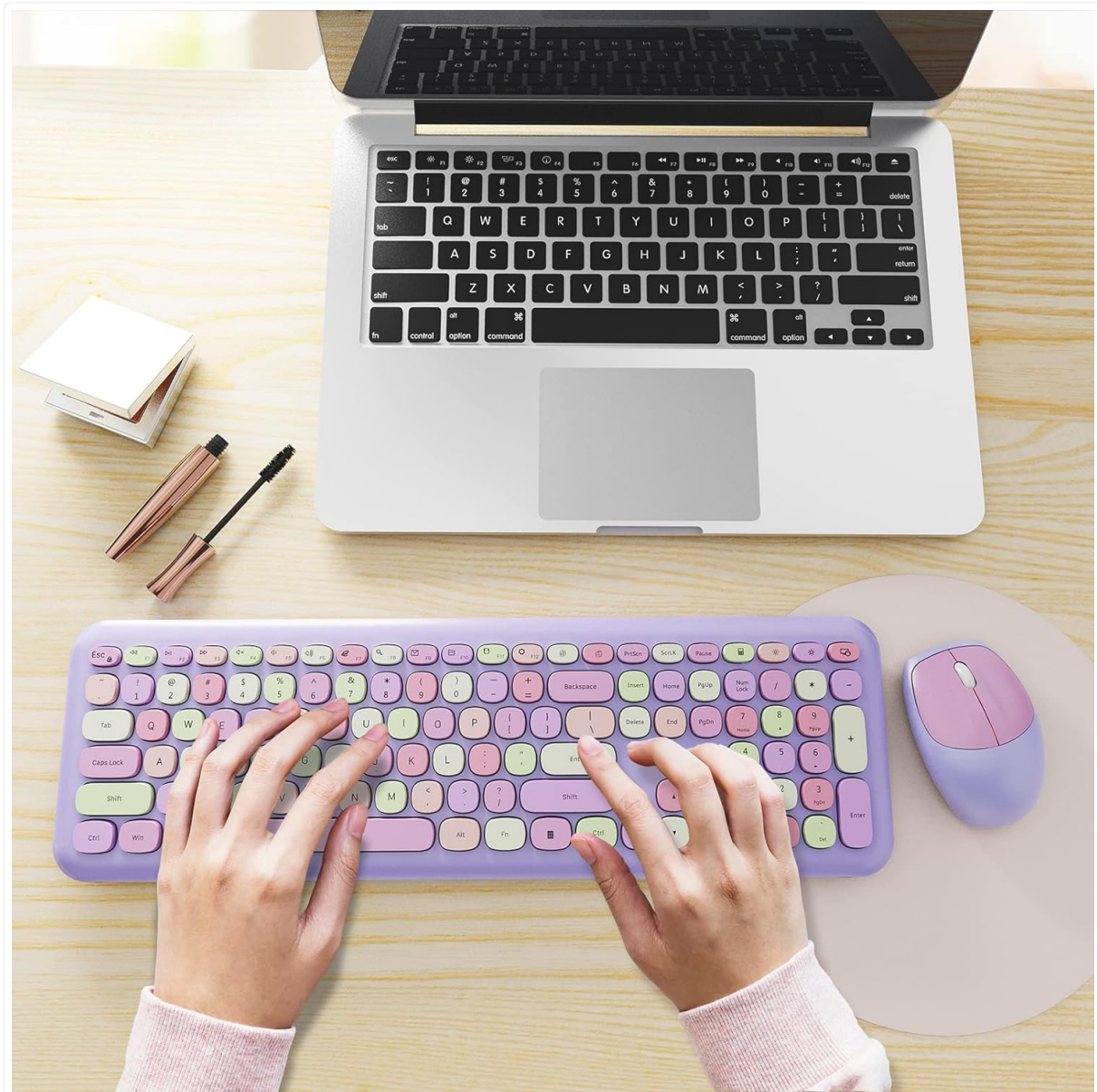


Image 3.1: User's hands demonstrating typing on the SkyGive Retro Wireless Keyboard, highlighting the ergonomic and comfortable design.

### 3.2 Multi-functional Hotkeys

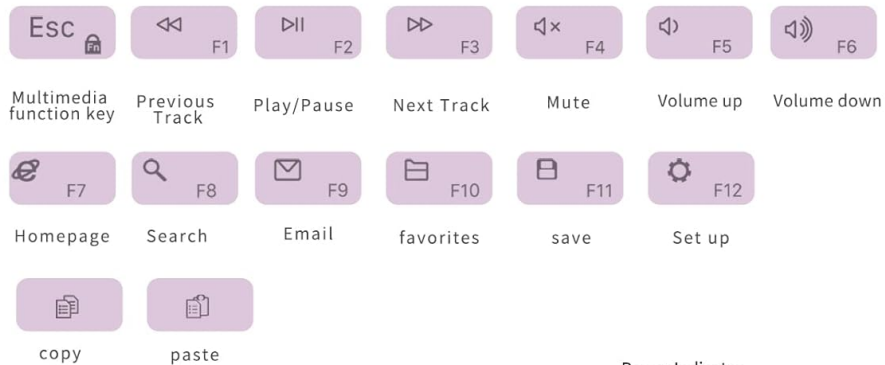
The keyboard features 14 multi-functional hotkeys for quick access to common functions. These keys are typically accessed by pressing the **Fn** key in combination with the corresponding function key (F1-F12).

- **Fn + Esc:** Multimedia function key
- **Fn + F1:** Previous Track
- **Fn + F2:** Play/Pause
- **Fn + F3:** Next Track
- **Fn + F4:** Mute
- **Fn + F5:** Volume Up
- **Fn + F6:** Volume Down
- **Fn + F7:** Homepage
- **Fn + F8:** Search
- **Fn + F9:** Email

- **Fn + F10:** Favorites
- **Fn + F11:** Save
- **Fn + F12:** Setup
- Dedicated keys for Calculator and Lock Screen are also present.

## 14 MULTI-FUNCTIONAL SHORTCUT KEYS

Convenient access to music, volume control, home page, email and more



calculator Lock screen  
Power Indicator  
Number Lock Indicator  
Caps Lock Indicator



Image 3.2: Detailed view of the keyboard layout, illustrating the 14 multi-functional shortcut keys and their corresponding actions.

### 3.3 Mouse Usage

The ergonomic mouse provides precise tracking and quiet clicks. Its comfortable fluid shape helps reduce wrist pressure during prolonged use.

## LESS-NOISE KEYBOARD AND MOUSE SET



Image 3.3: Close-up of the ergonomic wireless mouse, designed for comfortable handling.

## 4. MAINTENANCE

Proper maintenance ensures the longevity and optimal performance of your wireless combo.

### 4.1 Cleaning

- Use a soft, dry cloth to wipe the surfaces of the keyboard and mouse.
- For stubborn dirt, slightly dampen the cloth with water or a mild, non-abrasive cleaner. Avoid excessive moisture.
- Do not use harsh chemicals, solvents, or abrasive materials, as these can damage the finish.

### 4.2 Battery Management

- The mouse features intelligent power-saving technology, entering sleep mode after 20 seconds of inactivity. Move the mouse to wake it up.
- Replace batteries when performance degrades or the low battery indicator (if present) illuminates.
- Remove batteries if the device will not be used for an extended period to prevent leakage.

## 5. TROUBLESHOOTING

If you encounter issues, refer to the following troubleshooting steps.

- **No Connection/Lag:**
  - Ensure the USB receiver is securely plugged into a working USB port.
  - Check if the batteries in both the keyboard and mouse are correctly installed and have sufficient charge. Replace if necessary.
  - Move the keyboard and mouse closer to the USB receiver to rule out range issues.
  - Try plugging the USB receiver into a different USB port on your computer.
  - Restart your computer.
- **Keys Not Responding:**
  - Verify battery status.
  - Ensure the keyboard is within range of the USB receiver.
  - Clean around the affected keys to remove any debris.
- **Mouse Not Tracking:**
  - Check battery status.
  - Ensure the optical sensor on the bottom of the mouse is clean and unobstructed.
  - Use the mouse on a suitable surface (not highly reflective or transparent).
- **Mac OS Compatibility:**
  - While compatible with Mac OS, please note that some specific hotkeys or functions may not operate identically to their Windows counterparts due to system differences.

## 6. SPECIFICATIONS

<b>Brand</b>	SkyGive
<b>Model</b>	Retro Wireless Combo B0BKLP573F
<b>Connectivity Technology</b>	2.4GHz Wireless (USB Receiver)
<b>Special Feature</b>	Ergonomic, Low-Noise, Retro Oval-Keys
<b>Compatible Devices</b>	Windows XP/Vista/7/8/10/X, Mac OS, PC, Laptop, Desktop, Chromebook
<b>Keyboard Dimensions</b>	Approx. 17.83 x 5.75 x 1.1 inches (45.3 x 14.6 x 2.8 cm)
<b>Mouse Dimensions</b>	Approx. 4.1 x 2.7 inches (10.4 x 6.9 cm)
<b>Item Weight</b>	1.94 pounds (0.88 kg)
<b>Batteries Required</b>	1 AA for Keyboard, 1 AA for Mouse (included)
<b>Manufacturer</b>	SkyGive

## 7. WARRANTY AND SUPPORT

SkyGive is committed to providing high-quality products and customer satisfaction.

- **Warranty:** This product comes with a one-year warranty from the date of purchase.
- **Return Policy:** Enjoy a 30-day hassle-free return policy.
- **Customer Service:** For any questions, technical support, or warranty claims, please contact SkyGive

customer service. We offer 24/7 prompt and friendly support.

- **USB Connector Replacement:** In the event that the USB connector is broken, a new replacement can be re-sent to you free of charge. Please contact customer service for assistance.