

beeprt BY-482BT-2

BEEPRT BY-482BT-2 Bluetooth Thermal Label Printer User Manual

Wireless Thermal Label Printer for Shipping Package & Small Business

1. PRODUCT OVERVIEW

The BEEPRT BY-482BT-2 is a versatile Bluetooth thermal label printer designed for efficient and high-quality label printing. It supports various platforms and label sizes, making it ideal for shipping, small businesses, and personal use. This printer utilizes thermal printing technology, eliminating the need for ink or toner.



Figure 1.1: BEEPRT BY-482BT-2 Printer in operation, showing a printed shipping label and a smartphone connected via Bluetooth. The label displays a tracking number [1Z81RW830373586843](#) and a package ID [420925519534](#).

2. SETUP GUIDE

2.1. Unboxing and Components

Before starting, ensure all components are present in the package:

- BEEPRT BY-482BT-2 Thermal Label Printer
- Power Adapter
- USB Cable
- Sample Labels
- User Manual (this document)

2.2. Loading Labels

1. Open the top cover of the printer.
2. Adjust the label guides to match the width of your labels.
3. Insert the thermal labels, ensuring the print side is facing up.
4. Close the top cover. The printer will automatically feed a few labels to calibrate.

2.3. Connecting the Printer

2.3.1. Wireless Connection (Bluetooth)

The printer supports wireless printing via Bluetooth for iOS, Android, and Windows devices.



Figure 2.1: Wireless printing capabilities of the BEEPRT printer, highlighting app-based printing for iOS/Android and Bluetooth printing for Windows. Mac OS is not supported wirelessly.



Figure 2.2: Visual representation of both Bluetooth and USB connection methods for the printer, indicating compatible operating systems for each.

2.3.2. USB Connection

For wired printing, connect the printer to your computer using the provided USB cable. This method is compatible with Mac OS (10.9 and above), Windows (8 and later), and Chrome OS.

PRINT VIA USB

☒


Mac OS
(10.9 and Above)

☒


Windows
(8 and Later)

☒


Chrome OS





Figure 2.3: The printer connected to a computer via USB, demonstrating compatibility with Mac OS, Windows, and Chrome OS for direct printing.

2.4. Driver/App Installation

2.4.1. Mobile App (iOS/Android)

Download the "Shipping Printer Pro" app from your device's app store (Google Play Store for Android or Apple App Store for iOS). Allow necessary permissions like Bluetooth and Location for the app to function correctly.

Video 2.1: Demonstrates how to use the "Shipping Printer Pro" app on an iOS device to find, select, and print a label. This includes steps for app download, file selection, and print settings adjustment.

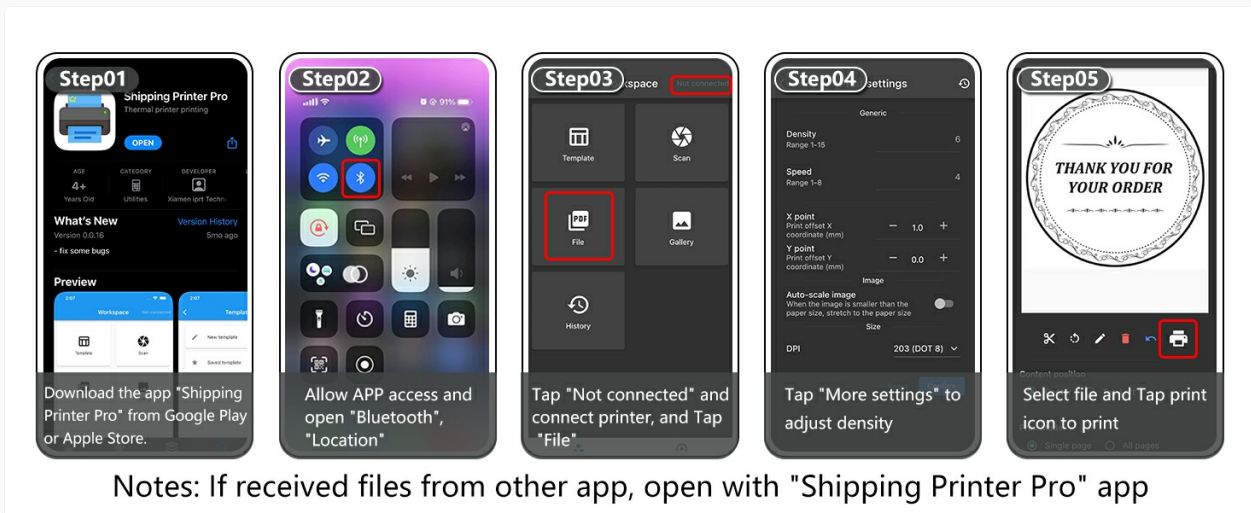


Figure 2.4: Step-by-step visual instructions for using the "Shipping Printer Pro" mobile application, from initial download to final printing.

2.4.2. Chrome OS Extension

For Chrome OS users, install the "Shipping Printer" extension from the Chrome Web Store. Once installed, you can print directly from your browser.

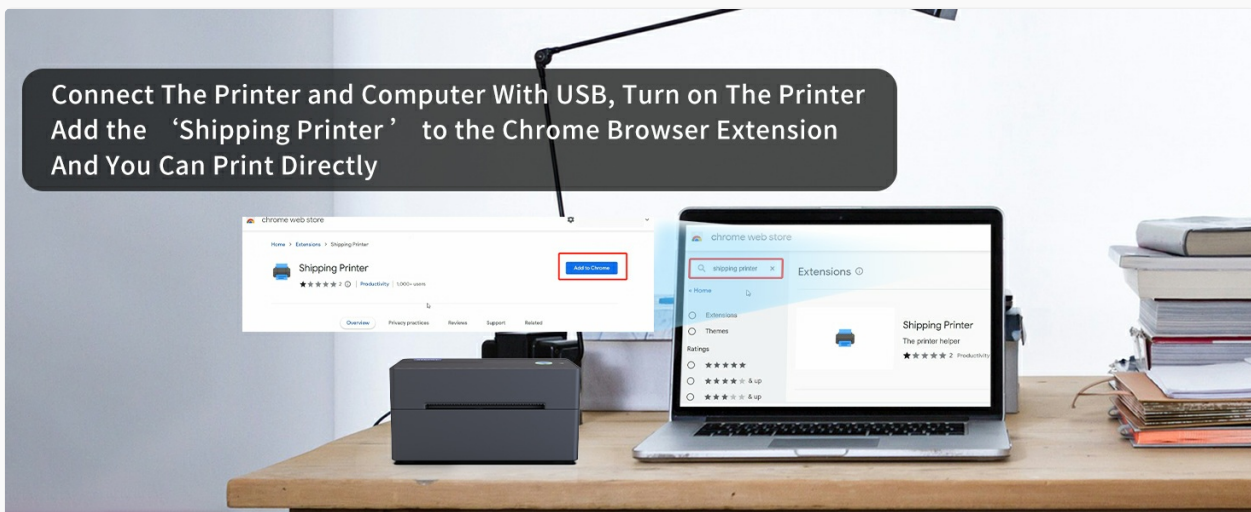


Figure 2.5: Guide for setting up the printer with Chrome OS, emphasizing the installation of the dedicated browser extension.

3. OPERATING INSTRUCTIONS

3.1. Printing from Various Platforms

The BEEPRT BY-482BT-2 printer is compatible with a wide range of e-commerce and shipping platforms, including but not limited to Amazon, eBay, Shopify, Etsy, PayPal, FedEx, UPS, USPS, Stamps.com, ShipStation, and more.

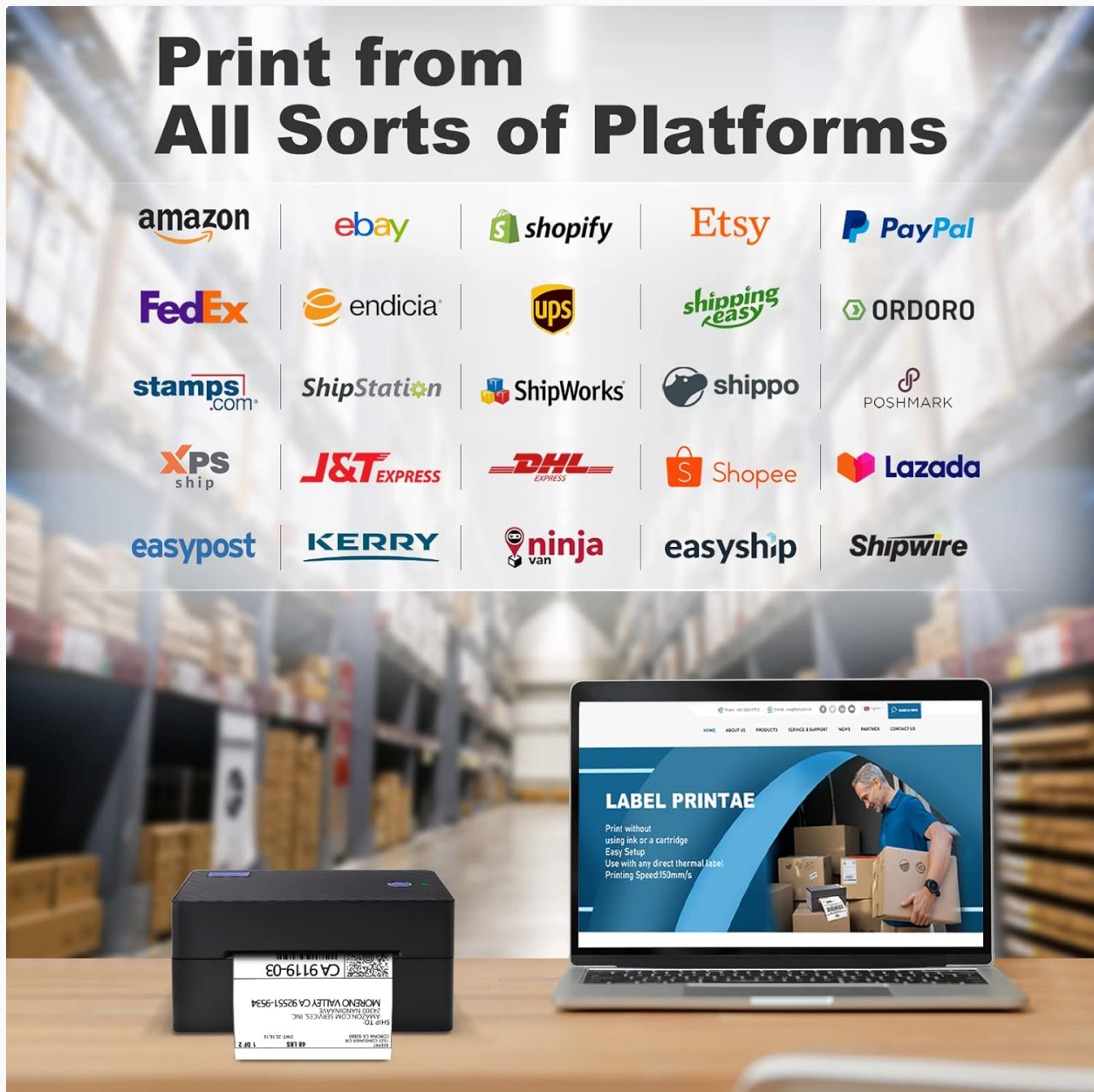


Figure 3.1: The printer's broad compatibility with numerous online selling and shipping platforms, simplifying label generation.

3.2. High-Speed Printing

Experience rapid label printing with speeds up to 72 labels per minute, ensuring efficiency for high-volume tasks.

High-Speed Printing

72 Labels/Minute



Figure 3.2: Demonstration of the printer's high-speed output, showing multiple labels being printed quickly.

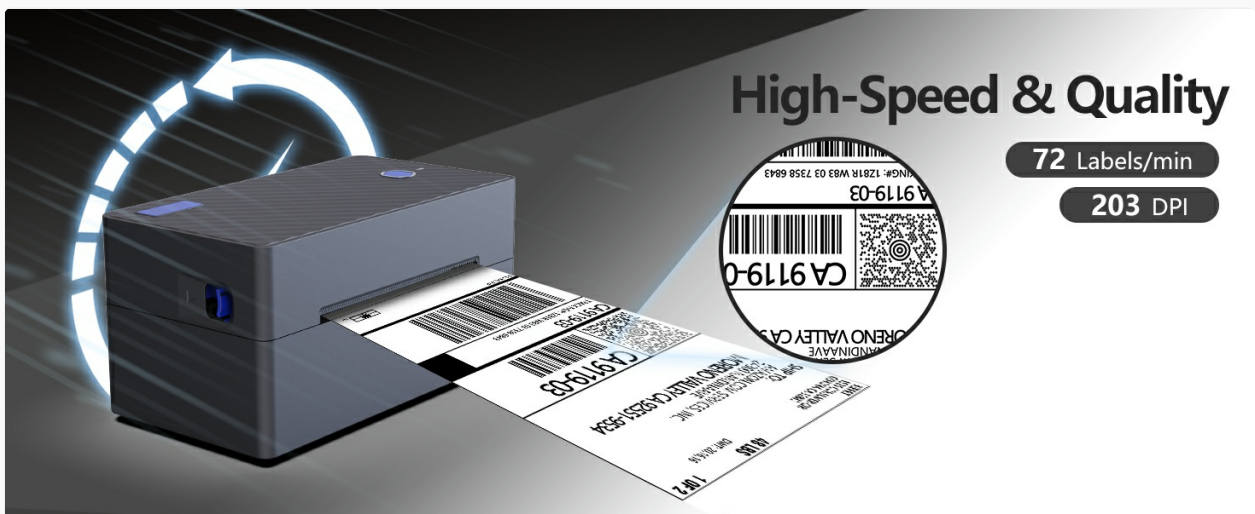


Figure 3.3: Details on the printer's performance, including its speed of 72 labels per minute and a print resolution of 203 DPI. A label with ID [420925519534](#) is shown.

3.3. Supported Label Sizes and Types

The printer accommodates thermal labels with widths ranging from 1.18 inches to 4.1 inches (30mm to 104mm). This includes common sizes like 4x6 inches, 3x2 inches, 3x1 inches, and 2-1/4x1-1/4 inches, as well as various custom and specialized labels such as DIY labels, shipping labels, time labels, CPU code labels, and QR code labels.



Figure 3.4: Overview of the printer's flexibility in handling various label widths and common label sizes.



Figure 3.5: Examples of diverse label applications supported by the printer, from general purpose to specific codes.

4. MAINTENANCE

To ensure optimal performance and longevity of your BEEPRT BY-482BT-2 printer, follow these maintenance guidelines:

- **Cleaning the Print Head:** Regularly clean the print head with an alcohol swab to remove dust and adhesive residue. Ensure the printer is turned off and cooled down before cleaning.
- **Cleaning the Platen Roller:** Use a damp cloth to wipe the platen roller, removing any paper dust or debris.
- **Dust Removal:** Keep the printer free from dust by wiping its exterior with a soft, dry cloth.
- **Proper Label Storage:** Store thermal labels in a cool, dry place away from direct sunlight and heat to prevent degradation.
- **Avoid Sharp Objects:** Never use sharp objects to remove jammed labels, as this can damage internal components.

5. TROUBLESHOOTING

5.1. Common Issues and Solutions

Problem	Possible Cause	Solution
Printer not responding	Power issue, loose cable, incorrect connection.	Check power connection, ensure USB/Bluetooth is properly connected, restart printer and device.
Poor print quality	Dirty print head, low-quality labels, incorrect density settings.	Clean print head, use high-quality thermal labels, adjust print density in app/driver.
Labels not feeding correctly	Labels loaded incorrectly, label guides not adjusted, empty roll.	Reload labels correctly, adjust label guides, replace label roll.
Bluetooth connection issues	Bluetooth off, device out of range, interference.	Ensure Bluetooth is enabled on both devices, move closer to printer, minimize interference.

5.2. Mac OS Security Settings for Drivers

If you encounter issues installing drivers on Mac OS, it might be due to security settings preventing installation from unidentified developers. Follow these steps to resolve the issue:

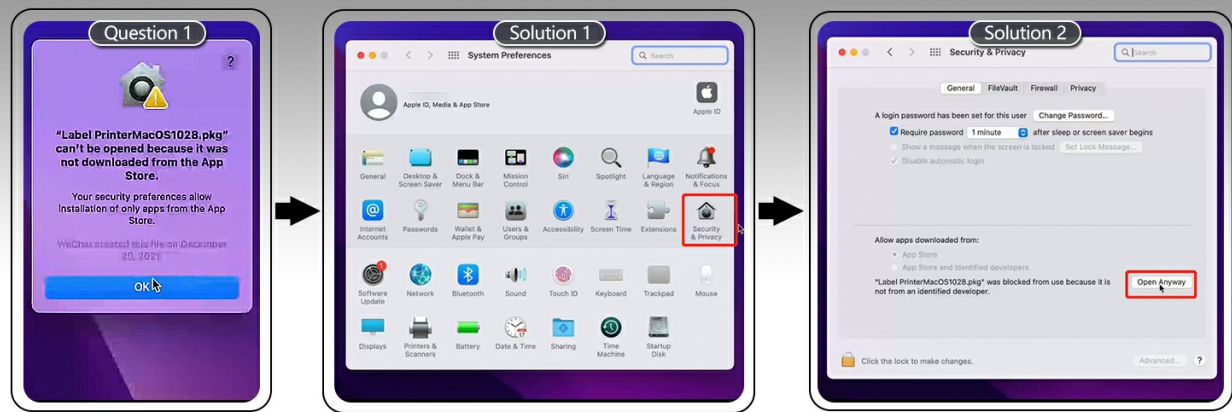


Figure 5.1: Visual guide for adjusting Mac OS security settings to allow installation of drivers from unidentified developers.

1. When you see the "'Label Printer macOS.pkg' can't be opened because it was not downloaded from the App Store." message, click **OK**.
2. Go to **System Preferences > Security & Privacy**.
3. In the **General** tab, look for the message "'Label Printer macOS.pkg' was blocked from use because it is not from an identified developer." and click **Open Anyway**.
4. You may need to unlock the settings by clicking the padlock icon and entering your password.

6. SPECIFICATIONS

Feature	Detail
Brand	beeptr
Model Name	BY-482BT-2
Printing Technology	Thermal
Connectivity Technology	Bluetooth, USB
Maximum Print Resolution	203 x 203 DPI
Print Speed	72 Labels/Minute
Maximum Media Size	4x6 inches
Printable Label Widths	1.18" - 4.1" (30mm - 104mm)
Compatible Devices	PC (Windows, Mac OS, Chrome OS), iOS, Android
Control Method	App, Software
Item Weight	2 Pounds

Feature	Detail
Product Dimensions	5.16 x 8.39 x 6.85 inches
Included Components	Labels (sample)

7. WARRANTY AND SUPPORT

The BEEPRT BY-482BT-2 printer comes with a limited warranty. For detailed warranty information, please refer to the warranty card included in your product packaging or visit the official BEEPRT website. For technical support, troubleshooting assistance, or any product-related inquiries, please contact BEEPRT customer service through their official channels.