

Northair 574BG30007

Northair 3.5 Cu Ft Low Temperature Chest Freezer User Manual

Model: 574BG30007

1. INTRODUCTION

Thank you for choosing the Northair 3.5 Cu Ft Low Temperature Chest Freezer. This manual provides essential information for the safe installation, operation, and maintenance of your appliance. Please read these instructions thoroughly before use and retain them for future reference.

2. SAFETY INFORMATION

To reduce the risk of fire, electric shock, or injury when using your freezer, follow these basic precautions:

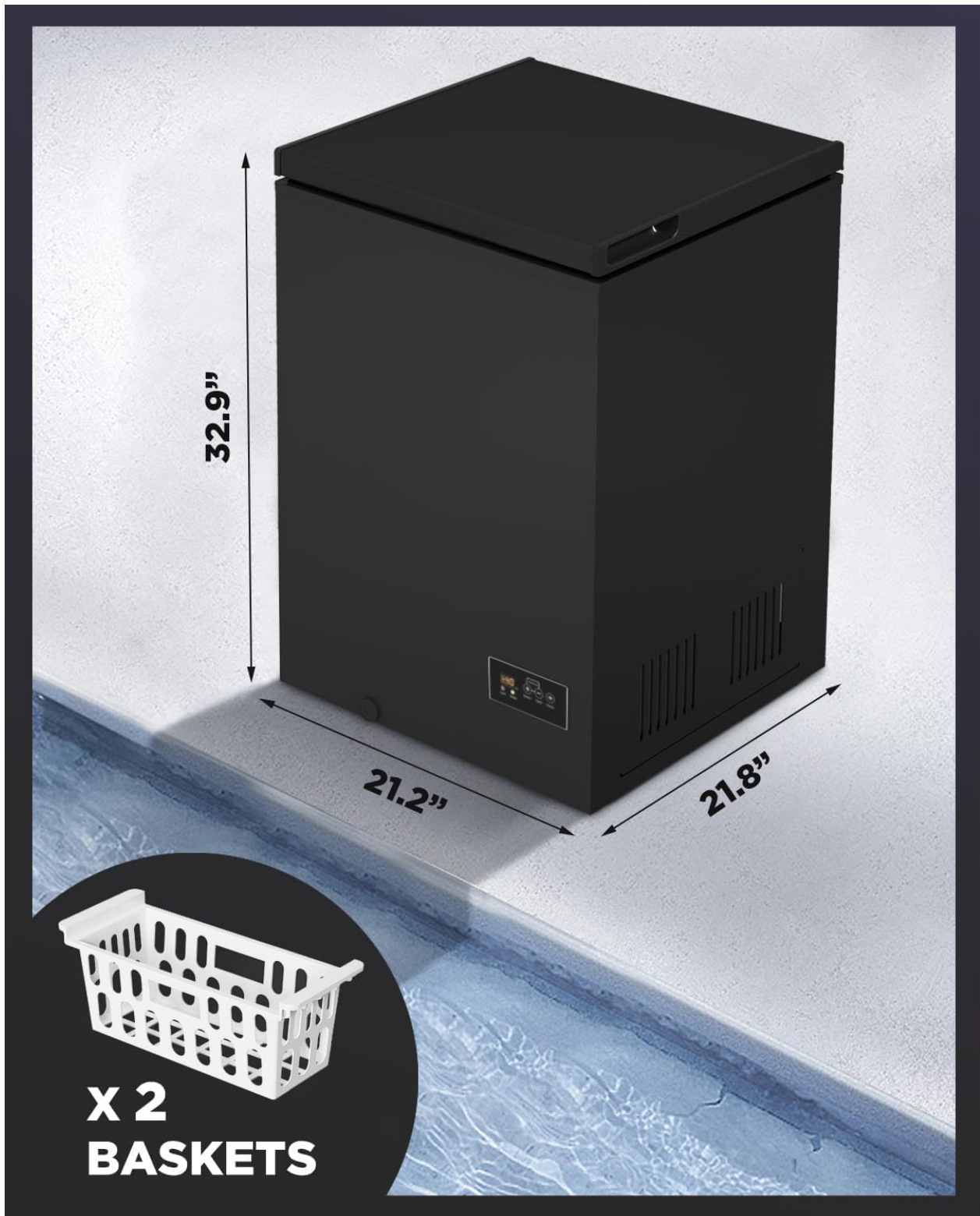
- Read all instructions before using the appliance.
- **Electrical Safety:** Ensure the freezer is connected to a properly grounded electrical outlet. Do not use extension cords or ungrounded adapters.
- **Ventilation:** Maintain adequate air circulation around the freezer. Allow at least 5 inches of space on all sides for proper heat dissipation.
- **Placement:** Place the freezer on a firm, level surface away from direct sunlight, heat sources, and extreme cold. Avoid placing it in damp or wet areas.
- **Child Safety:** Supervise children when they are near the appliance. Never allow children to play inside the freezer.
- **Flammable Materials:** Do not store explosive substances such as aerosol cans with flammable propellants in this appliance.
- **Defrosting:** Use only the manufacturer-recommended methods for defrosting. Do not use sharp objects to remove ice.

3. PRODUCT FEATURES

- **Precise Temperature Control:** The intelligent digital display allows for precise temperature adjustments in 1°F increments, ranging from 14°F to -40°F. This ensures optimal preservation for various food items.

- **Optimal Storage Capacity:** With a 3.5 cubic feet capacity, this chest freezer is designed for efficient storage in modern homes. It includes two removable baskets for organized storage of smaller items.
- **Ultra-Low Temperature Capability:** A high-performance compressor maintains ultra-low temperatures, ensuring food remains fresh for extended periods.
- **Energy Saving:** Engineered for efficiency, the freezer has a modest energy consumption of 0.45 kWh/24h, contributing to lower energy bills.
- **Steady Lid Design:** The lid is designed to stay open between 45° and 90° angles, providing hands-free access to the freezer interior. The door mechanism operates quietly.

Figure 1: Digital temperature control panel for precise adjustments.



4. SETUP

1. **Unpacking:** Carefully remove all packaging materials, including foam and adhesive tape. Inspect the freezer for any damage.
2. **Placement:** Choose a location with a hard, level floor that can support the weight of the freezer when fully loaded. Ensure the area is well-ventilated and away from direct sunlight or heat sources. Allow at least 5 inches of space around the freezer for proper air circulation.
3. **Initial Cleaning:** Before first use, clean the interior and exterior of the freezer with a mild detergent and warm water. Rinse thoroughly and dry completely.
4. **Power Connection:** Plug the freezer into a dedicated, grounded electrical outlet. Allow the freezer to stand upright for at least 2-4 hours before plugging it in to allow the refrigerant to settle.
5. **Initial Cooling:** After plugging in, allow the freezer to cool for several hours (e.g., 4-6 hours) before loading it with food.

5. OPERATING INSTRUCTIONS

5.1 Temperature Adjustment

Your Northair chest freezer features a digital control panel for precise temperature settings:

1. **Unlock:** Press and hold the 'Unlock' button for 3 seconds to unlock the control panel. The display will blink.
2. **Adjust Temperature:** Use the 'Temp+' and 'Temp-' buttons to set your desired temperature. The temperature range is 14°F to -40°F.
3. **Confirm:** The setting will automatically save after a few seconds of inactivity, or you can press the 'Lock' button to confirm and lock the setting.

5.2 Quick-Freeze Function

To rapidly freeze newly added items, utilize the Quick-Freeze function:

- Press the 'Freeze' button on the digital control panel. The freezer will operate at its lowest temperature setting to quickly freeze contents.
- This function is ideal for preserving the quality of fresh food.

Figure 3: Quick-Freeze function for rapid cooling.

Figure 4: Examples of food items preserved at ultra-low temperatures.

Your browser does not support the video tag.

Video 1: Demonstration of the digital temperature control and interior space of a chest freezer.

6. MAINTENANCE

6.1 Defrosting

Defrost the freezer when ice accumulation reaches approximately 0.2 to 0.4 inches (5-10 mm) thick. To defrost:

1. Unplug the freezer from the power outlet.
2. Remove all food items and store them in another freezer or cooler.
3. Open the drain plug located at the bottom of the freezer to allow water to escape. Place a shallow pan or towel underneath to collect the water.
4. Leave the lid open to accelerate the defrosting process.
5. Once defrosted, clean and dry the interior thoroughly before plugging it back in and returning food.

6.2 Cleaning

- Clean the interior regularly with a solution of mild detergent and warm water. Avoid abrasive cleaners or sharp tools.
- Wipe down the exterior with a soft cloth and mild cleaner.
- Ensure the door gasket is clean and free of debris to maintain a tight seal.

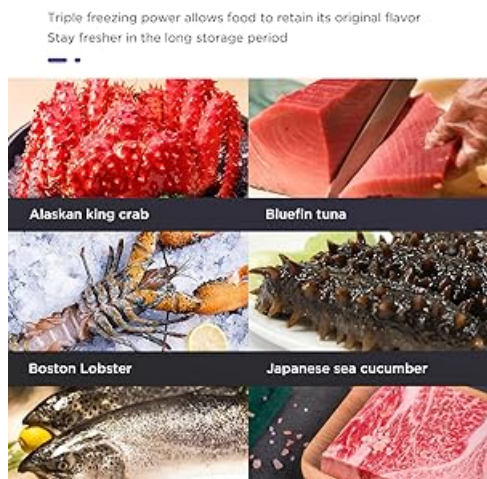


Figure 5: Interior of the freezer with the drain plug visible.

7. TROUBLESHOOTING

If you experience issues with your freezer, consult the table below before contacting customer service:

Problem	Possible Cause	Solution
Freezer does not operate	No power supply; power cord unplugged; circuit breaker tripped.	Check power connection; reset circuit breaker.
Temperature is not cold enough	Temperature setting too high; lid not closed properly; excessive ice build-up; poor ventilation.	Adjust temperature setting; ensure lid is sealed; defrost freezer; check for adequate clearance around the unit.

Problem	Possible Cause	Solution
Excessive noise	Freezer is not level; objects vibrating against the unit.	Adjust leveling feet; ensure no objects are touching the freezer.
Frost build-up	Lid gasket not sealing properly; frequent opening of the lid; high humidity.	Check and clean lid gasket; minimize lid openings; defrost as needed.

8. SPECIFICATIONS

Feature	Specification
Brand	Northair
Model Number	574BG30007
Capacity	3.5 Cubic Feet
Temperature Range	14°F to -40°F
Product Dimensions (L x W x H)	23.43 x 22.91 x 34.45 inches
Item Weight	48 pounds
Color	ProBlack
Installation Type	Freestanding
Included Components	Handles, 2 Removable Baskets
Energy Consumption	0.45 kWh/24h