

[Manuals.plus](#) /

› [NPAUTO](#) /

› NPAUTO TPMS Tire Pressure Sensor Instruction Manual for Ford, Lincoln, Mazda, Mercury Vehicles (Models 6F2Z-1A189-A, 7L1Z1A189A)

NPAUTO 6F2Z-1A189-A, 7L1Z1A189A

NPAUTO TPMS Tire Pressure Sensor Instruction Manual

Model: 6F2Z-1A189-A, 7L1Z1A189A

Brand: NPAUTO

1. INTRODUCTION

This manual provides essential information for the installation, operation, and maintenance of your NPAUTO 315MHz Tire Pressure Monitoring System (TPMS) sensors. These sensors are designed to replace original equipment (OE) sensors, ensuring accurate tire pressure monitoring for enhanced driving safety. This package includes a set of four TPMS sensors.

FORD

2006-2011 Ford Crown Victoria
2007-2010 Ford Edge
2005-2008 Ford Escape
2007-2010 Ford Expedition
2006-2010 Ford Explorer
2006-2008 F-Series(F-150)
2006-2007 Ford Five Hundred
2009-2010 Ford Flex
2007-2009 Ford Focus
2006-2007 Ford Freestar
2006-2009 Ford Fusion
2005-2009 Ford Mustang
2006-2011 Ford Ranger,
2008-2010.05 Ford Taurus

MAZDA

2007-2011 Mazda B-Series(2300,3000,4000)
2006-2008 Tribute

LINCOLN

2007-2008 Lincoln Mark LT (Heavy Duty)
2007-2008 Lincoln Mark LT (Light)
2009-2010 Lincoln MKS
2010 Lincoln MKT
2007-2010 Lincoln MKX
2007-2009 Lincoln MKZ
2007-2010 Lincoln Navigator
2006-2011 Lincoln Town Car
2006 Lincoln Zephyr

MERCURY

2006-2011 Mercury Grand Marquis
2005-2008 Mercury Mariner
2007-2009 Mercury Milan
2006-2007 Mercury Montego
2006-2007 Mercury Monterey
2006-2010 Mercury Mountaineer
2008-2009 Mercury Sable

OE : 6F2Z1A189A, 7L1Z1A189A

Before purchasing this order, Please check the description or use the year/make/model drop down bar to confirm the compatibility

Image 2.1: Visual compatibility chart for various vehicle brands and models.

3. PRODUCT FEATURES

The NPAUTO TPMS sensors are designed with advanced features for reliable performance:

- **High-Tech Intelligent Chip:** Ensures correct reading and lossless signal transmission.
- **Powerful Battery:** Provides a long operating life (≥5 years).
- **Stable Structure:** Minimizes electromagnetic interference for consistent performance.
- **All-Weather Rubber Snap-in Valve Stem:** Designed for rust resistance and enhanced durability.
- **OE-Like Design:** Guarantees structural reliability, durability, and safety, matching original equipment standards.

NPAUTO TPMS SENSOR

High-tech intelligent chip guarantee for

- * Reading correctly
- * Lossless signal

Powerful battery ensure a long operating life

Stable structure to minimize electro-magnetic interference

All weather rubber snap-in valve stem for rust-resistant & more durable



Image 3.1: Exploded view of the TPMS sensor highlighting key components like the intelligent chip, battery, and rubber stem.

NPAUTO TPMS SENSOR

-  Battery Life: ≥ 5 years
-  Torque: 4N.m
-  Frequency: 315 ± 0.05 MHz
-  Warranty: 12-Months
-  Tire Pressure: At 0-70°C: ± 8.25 kPa
Over the range of 0-70°C: ± 19.5 kPa
-  Pressure Monitoring Range: 100 – 900 kPa
-  Temperature Measurement Range: -40°C + 125°C



Image 3.2: Technical specifications including battery life, torque, frequency, and pressure/temperature ranges.

4. SETUP AND INSTALLATION

Installation of TPMS sensors typically requires specialized tools and knowledge. Professional installation is recommended. The general steps are as follows:

- 1. Remove the Tire:** Safely lift the vehicle and remove the wheel assembly.
- 2. Deflate Tire and Break Bead:** Remove the valve core to quickly drain air. Use a tire machine or appropriate method to break the tire bead from the rim.
- 3. Remove Old Sensor:** Carefully remove the existing TPMS sensor from the wheel. If it's a band-type sensor, locate and remove the C-clip. For stem-type sensors, use a stem removal tool.
- 4. Clean Stem Hole:** Ensure the valve stem hole on the rim is clean and free of debris.
- 5. Install New Sensor:** Insert the new NPAUTO TPMS sensor into the valve stem hole. Ensure it is properly seated and secured.
- 6. Inflate and Rebalance:** Inflate the tire to the manufacturer's recommended pressure. Rebalance the wheel assembly to prevent vibrations.
- 7. Reinstall Wheel:** Mount the wheel assembly back onto the vehicle.

NPAUTO TPMS SENSER INSTALLATION

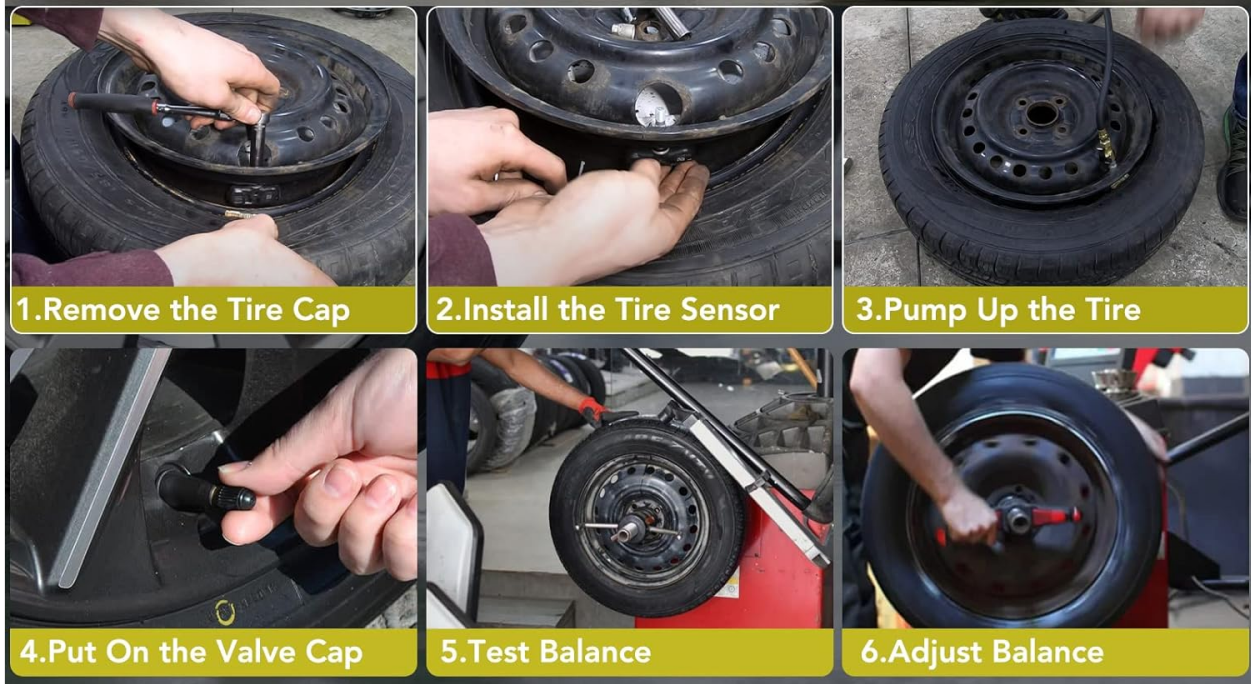


Image 4.1: Visual guide illustrating the installation process, from removing the tire cap to adjusting balance.

5. OPERATING AND RELEARN PROCESS

These NPAUTO TPMS sensors are pre-programmed and do not require initial programming. However, a relearn procedure is necessary for your vehicle's system to recognize and pair with the new sensors after replacement. This process typically requires a TPMS scanner tool.

General Relearn Steps (may vary by vehicle model):

1. **Enter Vehicle Relearn Mode:** Consult your vehicle's owner's manual or an automotive service guide for specific instructions on how to put your vehicle into TPMS relearn mode. This often involves a sequence of key turns and brake pedal presses.
2. **Activate Sensors:** Using a compatible TPMS scanner tool, activate each new sensor individually, following the vehicle's specified order (e.g., front left, front right, rear right, rear left). Hold the tool near the valve stem until the vehicle's horn honks, indicating successful activation of that sensor.
3. **Confirm Relearn:** Once all sensors are activated, the vehicle's TPMS light should turn off, confirming that the sensors have been successfully paired.

If the TPMS light remains on after the relearn procedure, refer to the troubleshooting section or seek professional assistance.

NPAUTO TPMS SENSOR

Pre-programmed monitoring sensor for GM vehicle's original factory replacement part



Image 5.1: Example of a vehicle dashboard displaying real-time tire pressure and temperature data after successful sensor operation.

6. MAINTENANCE

To ensure optimal performance and longevity of your NPAUTO TPMS sensors:

- **Regular Tire Pressure Checks:** Even with TPMS, it is good practice to manually check your tire pressure periodically with a reliable gauge.
- **Sensor Inspection:** During tire rotations or replacements, have the TPMS sensors inspected for any signs of damage or corrosion. The all-weather rubber stem is designed to resist rust, but external damage can occur.
- **Battery Life:** The sensors are equipped with a powerful battery designed for a life of 5 years or more. When the battery depletes, the entire sensor typically needs replacement.

7. TROUBLESHOOTING

If you encounter issues with your TPMS sensors, consider the following:

- **TPMS Warning Light Remains On:** If the TPMS warning light stays illuminated after sensor installation, it typically indicates that the sensors have not been successfully paired with the vehicle's system. Perform the

relearn procedure as described in Section 5.

- **Incorrect Pressure Readings:** Ensure tires are inflated to the correct pressure. If readings are still inaccurate, re-attempt the relearn process. If the issue persists, the sensor may be faulty or damaged.
- **Intermittent Warnings:** This could indicate a weak sensor battery or intermittent signal interference.

If troubleshooting steps do not resolve the issue, contact NPAUTO customer support or a certified automotive technician.

8. SPECIFICATIONS

Part Numbers	6F2Z-1A189-A, 7L1Z-1A189-A, 6F2Z1A15, 6F2A1A176AE, 6F2T1A150AE, ZZDA37140
Frequency	315MHz
Battery Life	≥5 years (1 Lithium Metal battery included)
Torque	4N.m
Tire Pressure Accuracy (0-70°C)	±8.25kPa
Tire Pressure Accuracy (Over 0-70°C)	±19.5kPa
Pressure Monitoring Range	100 – 900kPa
Temperature Measurement Range	-40°C to +125°C
Material	Rubber
Mounting Type	Flange Mount
Item Weight	1.44 ounces (0.04 Kilograms)
Package Dimensions	3.66 x 3.54 x 2.44 inches

NPAUTO TPMS SENSOR

OE-Like design ensures structural integrity and safety



Image 8.1: Dimensions of the NPAUTO TPMS sensor (2.28 inches width, 2.75 inches total height, 1.90 inches stem height).

9. WARRANTY AND SUPPORT

NPAUTO provides a **12-month warranty** for these TPMS sensors and offers lifetime support. If you encounter any issues or have questions regarding the product, please do not hesitate to contact NPAUTO customer service. Our team is available to assist you with any concerns.

For support, please refer to the contact information provided with your purchase or visit the official NPAUTO website.