

Kärcher AF20

Kärcher AF20 Air Purifier User Manual

Model: AF20

1. INTRODUCTION

This manual provides essential information for the safe and efficient operation, maintenance, and troubleshooting of your Kärcher AF20 Air Purifier. Please read this manual thoroughly before using the appliance and retain it for future reference.

The Kärcher AF20 is designed to improve indoor air quality by filtering out various airborne particles, allergens, and odors, providing a healthier environment for your home or office.

2. SAFETY INSTRUCTIONS

General Safety:

- Always ensure the appliance is placed on a stable, level surface.
- Do not block air inlets or outlets. Maintain at least 30 cm clearance around the unit.
- Keep the appliance away from water and other liquids. Do not operate with wet hands.
- Do not insert objects into any openings.
- Unplug the appliance before cleaning or performing any maintenance.
- This appliance is for indoor use only.
- Keep out of reach of children and pets.
- Do not use if the power cord or plug is damaged.

Electrical Safety:

- Connect the appliance to a properly grounded power outlet.
- Do not overload electrical outlets.
- Do not modify the power cord or plug.

3. PRODUCT OVERVIEW

The Karcher AF20 Air Purifier features advanced filtration technology and user-friendly controls to ensure clean air in your living space.

3.1 Key Features

- **Strong Filter Performance:** Equipped with dual H13 HEPA filters and activated carbon, removing 99.95% of particles as small as 0.3 μm , including allergens, pathogens, and odors.
- **Air Quality Display & Auto Mode:** Real-time air quality updates and automatic adjustment of performance based on current air conditions.
- **Optimal for Rooms up to 430 sq. ft (40 m²):** Provides fresh, clean air with an air throughput of up to 220 m³/h.
- **Compact & Lightweight Design:** Easy to place on desks or in home offices, weighing just 3 kg.
- **User-Friendly Controls:** 3 power settings, touch function control panel, night mode, timer program, and locking function.
- **Efficient & Eco-Friendly:** Low connected load of 24 W and quiet operation.
- **Dual Air Inlet System:** High air flow rate guaranteed by air intake on both sides.

3.2 Components and Design



Image Description: A Karcher AF20 Air Purifier, white in color, with one of its black H13 HEPA and activated carbon filters partially removed from the side, illustrating the filter compartment. The unit has a minimalist design with a blue indicator light on the front.



German Cleaning Technology

**TOUCH FUNCTION
DISPLAY**



**AIR QUALITY
DISPLAY**



Image Description: A Karcher AF20 Air Purifier shown from a slightly elevated angle, highlighting its top touch control panel with digital display and the front air quality indicator light. Text overlays point to "TOUCH FUNCTION DISPLAY" and "AIR QUALITY DISPLAY".



HIGH PROTECTED 13 FILTER

HEPA filter for the removal of pathogens and aerosols For bonding odours and chemical vapours.

Image Description: Two black H13 HEPA and activated carbon filters, designed for the Kärcher AF20 Air Purifier, are displayed next to the main unit. The filters are rectangular with a mesh-like surface, emphasizing their role in air purification.



QUIET OPERATION

Smooth-running motors and ventilators and quiet air ducts.

Image Description: A Karcher AF20 Air Purifier operating quietly in a home office setting, with a man working at a desk nearby. The image highlights the "QUIET OPERATION" feature of the device.

4. SETUP

Follow these steps to set up your Karcher AF20 Air Purifier:

1. Unpack the air purifier and all components.
2. Remove the top cover of the unit by twisting or lifting as indicated in the diagram.
3. Carefully remove the protective packaging from the filters.
4. Insert the filters into the designated slots on both sides of the unit. Ensure they are seated correctly.
5. Replace the top cover, ensuring it clicks or twists into place securely.
6. Place the air purifier on a firm, level surface. Ensure there is at least 30 cm (approximately 1 foot) of clear space around all sides for optimal airflow.
7. Connect the power adapter to the unit and then plug it into a suitable electrical outlet.

EASY SETUP

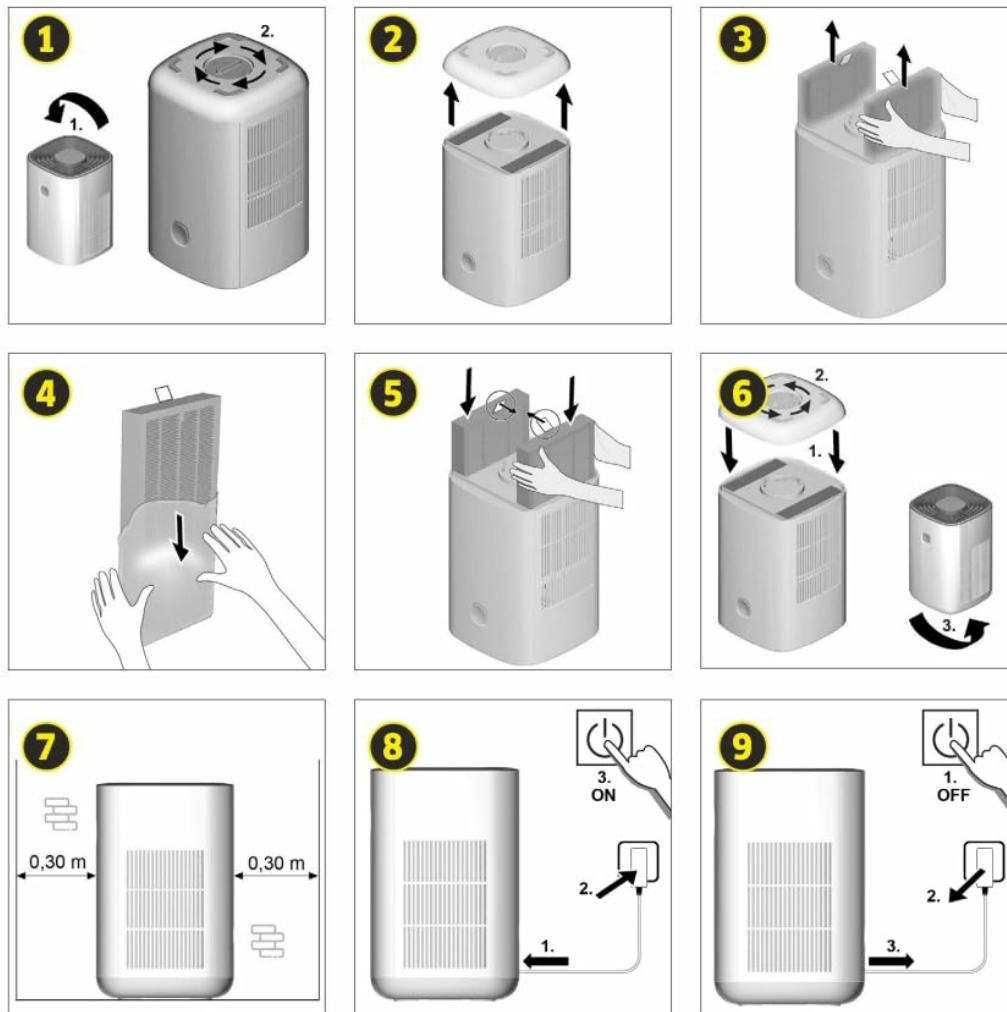


Image Description: A nine-panel diagram illustrating the easy setup process for the Karcher AF20 Air Purifier. It shows steps from unpacking, removing the top, inserting filters, replacing the top, placing the unit, and connecting power, emphasizing the 30cm clearance.

5. OPERATING INSTRUCTIONS

The Karcher AF20 features an intuitive touch control panel and an air quality display.

5.1 Power On/Off

- To turn on, touch the power button on the control panel.
- To turn off, touch the power button again.

5.2 Air Quality Display

The front indicator light and the digital display on top provide real-time feedback on air quality:

- The display shows the current PM2.5 level.
- The color of the indicator light changes to reflect air quality (e.g., blue for good, yellow for moderate, red for

poor).

5.3 Modes and Settings

- **Automatic Mode:** The purifier automatically adjusts fan speed based on detected air quality. Activate this mode for hands-free operation.
- **Manual Fan Speed:** Select from 3 power settings (low, medium, high) to manually control the fan speed.
- **Night Mode:** Reduces fan speed to the lowest setting and dims display lights for quiet operation during sleep.
- **Timer Program:** Set the purifier to operate for a specific duration (e.g., 1, 2, 4, 8 hours) before automatically turning off.
- **Locking Function:** Activates a child lock to prevent accidental changes to settings. Refer to the control panel diagram for activation/deactivation.



Image Description: A top-down view of the Karcher AF20 Air Purifier, showcasing its circular touch control panel with a digital display in the center. The display shows numerical values and various icons for different functions and modes.

6. MAINTENANCE

Regular maintenance ensures optimal performance and extends the lifespan of your air purifier.

6.1 Cleaning the Unit

- Always unplug the appliance before cleaning.
- Wipe the exterior surfaces with a soft, dry cloth.
- Do not use abrasive cleaners, solvents, or harsh chemicals.
- Ensure no water enters the unit.

6.2 Filter Replacement

The dual H13 HEPA filters, including an antibacterial activated carbon layer, should be replaced every 8-12 months for continued effectiveness. The unit may indicate when filter replacement is due.

1. Unplug the air purifier from the power outlet.
2. Remove the top cover of the unit.

3. Carefully pull out the old filters from their compartments.
4. Dispose of the old filters responsibly.
5. Unpack new Karcher AF20 replacement filters.
6. Insert the new filters into the compartments, ensuring they are correctly oriented and seated.
7. Replace the top cover.
8. Plug the unit back in and reset the filter life indicator (refer to the operating instructions for your specific model's reset procedure).



DUAL AIR INLET SYSTEM

Thanks to the air intake on both sides, a high air flow rate is guaranteed.

Image Description: A hand is shown removing one of the black filters from the top of the Karcher AF20 Air Purifier, illustrating the "DUAL AIR INLET SYSTEM" and filter access for maintenance.

7. TROUBLESHOOTING

If you encounter issues with your Karcher AF20 Air Purifier, refer to the following table:

Problem	Possible Cause	Solution
---------	----------------	----------

Problem	Possible Cause	Solution
Unit does not turn on.	Not plugged in; power outage; damaged cord/plug.	Check power connection; verify power supply; inspect cord for damage.
Poor air purification.	Filters are dirty or expired; air inlets/outlets blocked.	Replace filters; ensure clear space around the unit.
Unusual noise.	Foreign object inside; unit not on a stable surface; fan issue.	Unplug and check for obstructions; place on a stable surface; contact support if noise persists.
Air quality indicator always red/poor.	High pollution in the room; sensor dirty.	Allow time for purification; clean the air quality sensor (refer to specific cleaning instructions if available).

If the problem persists after attempting these solutions, please contact Kärcher customer support.

8. SPECIFICATIONS

Feature	Detail
Brand	Kärcher
Model Number	1.024-820.0 (AF20)
Colour	White
Product Dimensions (L x W x H)	22D x 22W x 34.6H Centimeters
Floor Area Coverage	Up to 40 Square Meters (430 sq. ft)
Filtration Type	Dual H13 HEPA & Activated Carbon Filters
Noise Level	26 Decibels (minimum)
Controller Type	Touch Control
Wattage	24 Watts
Item Weight	3 kg 350 g
Country of Origin	China



Image Description: A diagram showing the dimensions of the Karcher AF20 Air Purifier. The unit is depicted with measurements: 22cm (width), 22cm (depth), and 34.4cm (height).

9. WARRANTY AND SUPPORT

9.1 Warranty Information

The Karcher AF20 Air Purifier typically comes with a **1-year warranty** from the date of purchase. Please refer to your purchase documentation or contact Karcher customer support for specific warranty terms and conditions applicable to your region.

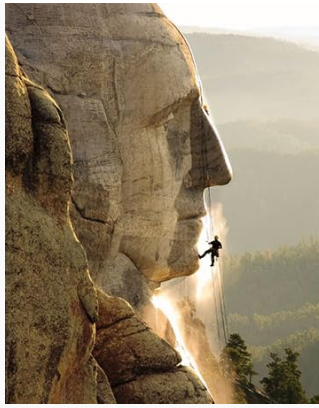


Image Description: A Kärcher AF20 Air Purifier shown in a home office setting with a "1 YEAR WARRANTY" badge prominently displayed, indicating the product's warranty period.

9.2 Customer Support

For technical assistance, warranty claims, or to purchase replacement parts and filters, please contact Kärcher customer support:

- **Manufacturer:** Alfred Kärcher SE & Co. KG
- **Importer/Packer (India):** Kärcher Cleaning Systems Pvt. Ltd., A42/4, Sector 62, Noida - 201309, UP, India
- **Phone (India):** 18001234180
- **Email (India):** info@in.kaercher.com
- For other regions, please visit the official Kärcher website for local contact information.

Note: No official product videos with creator type 'Seller' or relevant preview videos were found in the provided data to embed in this manual.