

FireAngel FA6115-FRT

FireAngel FA6115-FRT Optical Smoke Detector User Manual

Model: FA6115-FRT

1. INTRODUCTION

This manual provides essential information for the installation, operation, and maintenance of your FireAngel FA6115-FRT Optical Smoke Detector. Designed for home and caravan use, this detector features an advanced optical sensor for early detection of slow-burning fires and is a direct replacement for the ST-625 model. Please read these instructions carefully before installation and retain them for future reference.



Figure 1: Front view of the FireAngel FA6115-FRT Optical Smoke Detector.



Figure 2: Side view of the FireAngel FA6115-FRT Optical Smoke Detector, showing the ventilation grilles.

2. SAFETY INFORMATION

- This smoke detector is designed to detect smoke. It cannot prevent fires.
- Regularly test your smoke detector as described in this manual.
- Do not paint the smoke detector. Paint can block the smoke entry points and interfere with the sensor's ability to detect smoke.
- Do not attempt to repair the unit yourself. Refer to the warranty section for service information.
- Ensure batteries are installed correctly and replaced when indicated by the low battery warning.

3. PACKAGE CONTENTS

Verify that all items are present in your package:

- FireAngel FA6115-FRT Optical Smoke Detector
- Mounting Platform
- 2 x AA Batteries
- Screws and Anchors for installation
- User Manual (this document)



Figure 3: Package contents including the detector, mounting plate, batteries, and manual.

4. SETUP AND INSTALLATION

4.1 Choosing a Location

For optimal protection, install smoke detectors in all rooms, especially bedrooms and hallways leading to sleeping areas. Avoid placing detectors in or near:

- Kitchens or bathrooms, due to steam and cooking fumes that can cause false alarms.
- Areas with high humidity or extreme temperatures.
- Within 50 cm (20 inches) of walls or corners when mounted on the ceiling.

- Near ventilation outlets or fans that could prevent smoke from reaching the detector.

The FA6115-FRT is an optical smoke detector, highly effective at detecting slow-burning fires, which produce thick, visible smoke. For comprehensive fire safety, consider installing a heat alarm in the kitchen and a carbon monoxide alarm where fuel-burning appliances are present.



Figure 4: Example of a smoke detector installed on a ceiling in a hallway, a recommended location.

4.2 Mounting Instructions

1. **Prepare the Mounting Surface:** Choose a flat ceiling or wall surface. Use the mounting platform as a template to mark the screw holes.
2. **Drill Holes:** Drill two holes at the marked positions. Insert the provided anchors if installing into drywall or plaster.
3. **Attach Mounting Platform:** Secure the mounting platform to the ceiling or wall using the provided screws.
4. **Install Batteries:** Open the battery compartment on the back of the detector. Insert the two AA batteries, ensuring correct polarity (+/-).
5. **Attach Detector:** Align the detector with the mounting platform. Push and twist the detector clockwise until it clicks securely into place.

6. **Initial Test:** Press and hold the large 'TEST' button on the front of the detector for a few seconds. The alarm should sound loudly, and the red LED should flash. This confirms the unit is functioning correctly.



Figure 5: The removable mounting plate is secured to the ceiling or wall using screws.



Alimentation fiable

Piles remplaçables autonomie 5 ans

Le détecteur est livré avec 2 piles AA. Pour rester protégés, remplacez-les lorsque vous entendez le bip de piles faibles.

Figure 6: The battery compartment requires two AA batteries, which are included.

5. OPERATING INSTRUCTIONS

5.1 Normal Operation

Under normal operating conditions, the red LED indicator will flash approximately once every 45 seconds to indicate that the detector is powered and functioning correctly.

5.2 Test/Silence Button

The large central button serves two primary functions:

- **Testing:** Press and hold the button for a few seconds to perform a functional test. The alarm will sound, and the red LED will flash rapidly. This should be done monthly.
- **Silencing:** In the event of a known false alarm (e.g., from cooking fumes), press the button briefly to temporarily silence the alarm for approximately 10 minutes. The detector will automatically reset after this period.

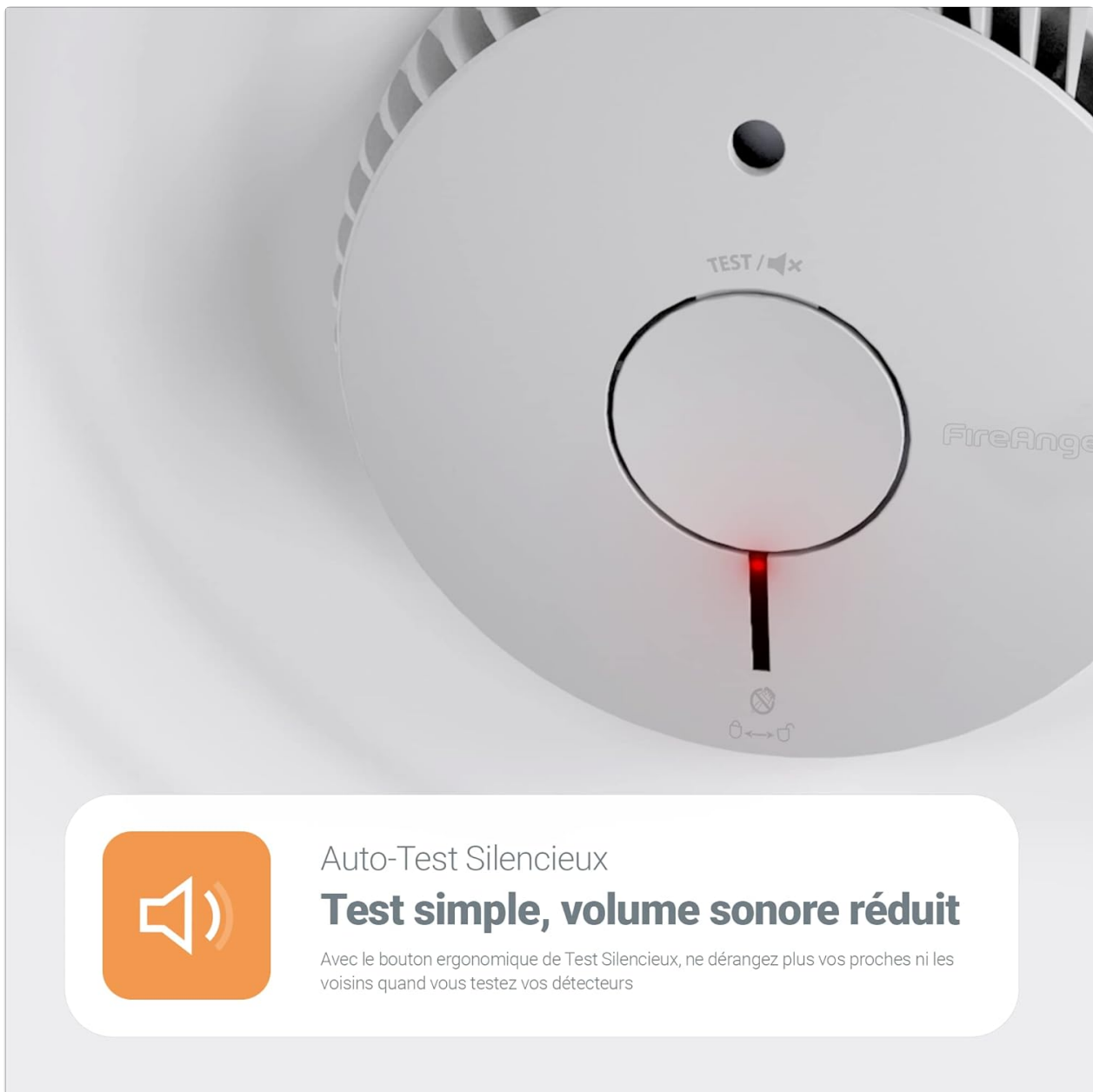


Figure 7: The central button is used for testing the alarm and silencing false alarms.

5.3 Sleep Easy™ Function (Low Battery Silence)

If the batteries are low, the detector will emit a short chirp approximately every 45 seconds, accompanied by a red LED flash. If this occurs during the night, you can activate the Sleep Easy™ function:

- Press the 'TEST' button once. The low battery chirp will be silenced for 8 hours.
- The red LED will continue to flash, indicating the low battery status.
- Even in Sleep Easy™ mode, the detector remains active and will sound the alarm if smoke is detected.
- Replace the batteries as soon as possible, ideally within 30 days of the first low battery warning.



Auto-Test Silencieux

Test simple, volume sonore réduit

Avec le bouton ergonomique de Test Silencieux, ne dérangez plus vos proches ni les voisins quand vous testez vos détecteurs

Figure 8: The Sleep Easy function allows temporary silencing of low battery chirps for 8 hours.

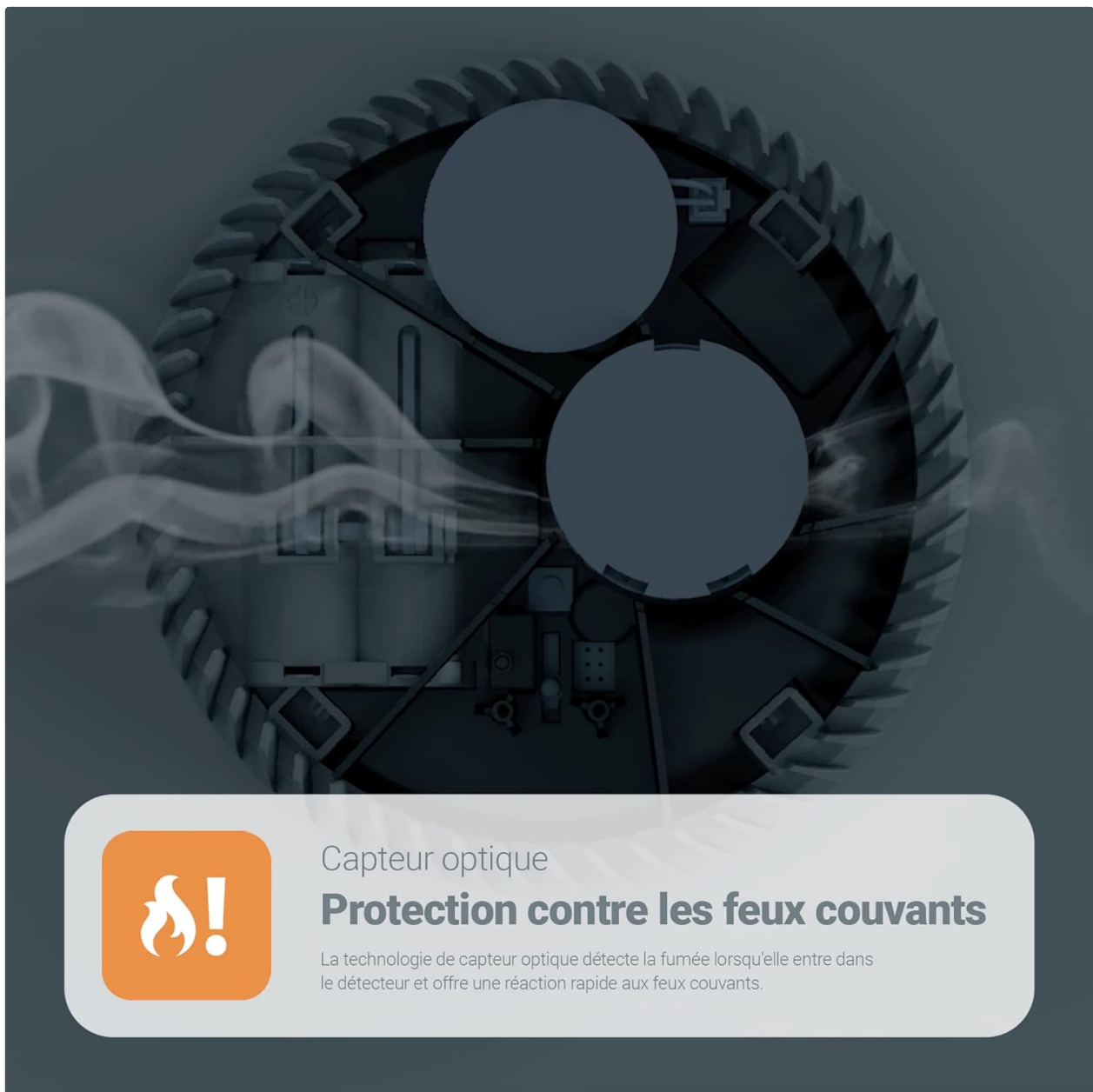


Figure 9: The optical sensor detects smoke particles entering the chamber, providing rapid detection for slow-burning fires.

6. MAINTENANCE

6.1 Monthly Testing

Test your smoke detector at least once a month by pressing and holding the 'TEST' button until the alarm sounds. This ensures the unit is functioning correctly.

6.2 Cleaning

Dust and debris can accumulate on the detector, potentially affecting its performance. Clean your smoke detector every 3-6 months:

- Gently vacuum around the detector's casing and ventilation openings using a soft brush attachment.
- Do not use cleaning sprays or solvents on the detector.

6.3 Battery Replacement

The FA6115-FRT uses two replaceable AA batteries with a typical lifespan of 5 years. When the low battery

warning sounds (chirp every 45 seconds), replace both batteries immediately. Refer to Section 4.2 for battery installation steps.

7. TROUBLESHOOTING

Problem	Possible Cause	Solution
Detector chirps every 45 seconds	Low battery	Replace both AA batteries immediately. Use Sleep Easy™ function if chirping occurs at night.
False alarms (e.g., during cooking)	Detector too close to kitchen/bathroom, steam, or cooking fumes.	Press the 'TEST' button to silence for 10 minutes. Relocate the detector if false alarms persist due to placement. Ensure proper ventilation during cooking.
Alarm does not sound during test	No power, faulty unit, or incorrect battery installation.	Check battery installation and replace if necessary. If the problem persists, the unit may be faulty and requires replacement.
Red LED not flashing	No power or faulty unit.	Ensure batteries are correctly installed and charged. If the issue persists, the unit may be faulty.

8. SPECIFICATIONS

Feature	Detail
Model Number	FA6115-FRT
Sensor Type	Optical (Photoelectric)
Power Source	Battery powered
Batteries	2 x AA (included, replaceable)
Battery Composition	Alkaline
Sensor Life	10 years
Product Dimensions (L x W x H)	11.81 x 11.81 x 3.15 cm
Diameter	118.1 mm
Weight	70 grams
Material	Plastic
Color	White
Installation Method	Wall or Ceiling (screws and anchors provided)

Feature	Detail
Operating Temperature	Up to 38°C
Operational Humidity	Up to 90% RH (non-condensing)
Certifications	CE certified, EN 14604:2005+AC:2008 compliant

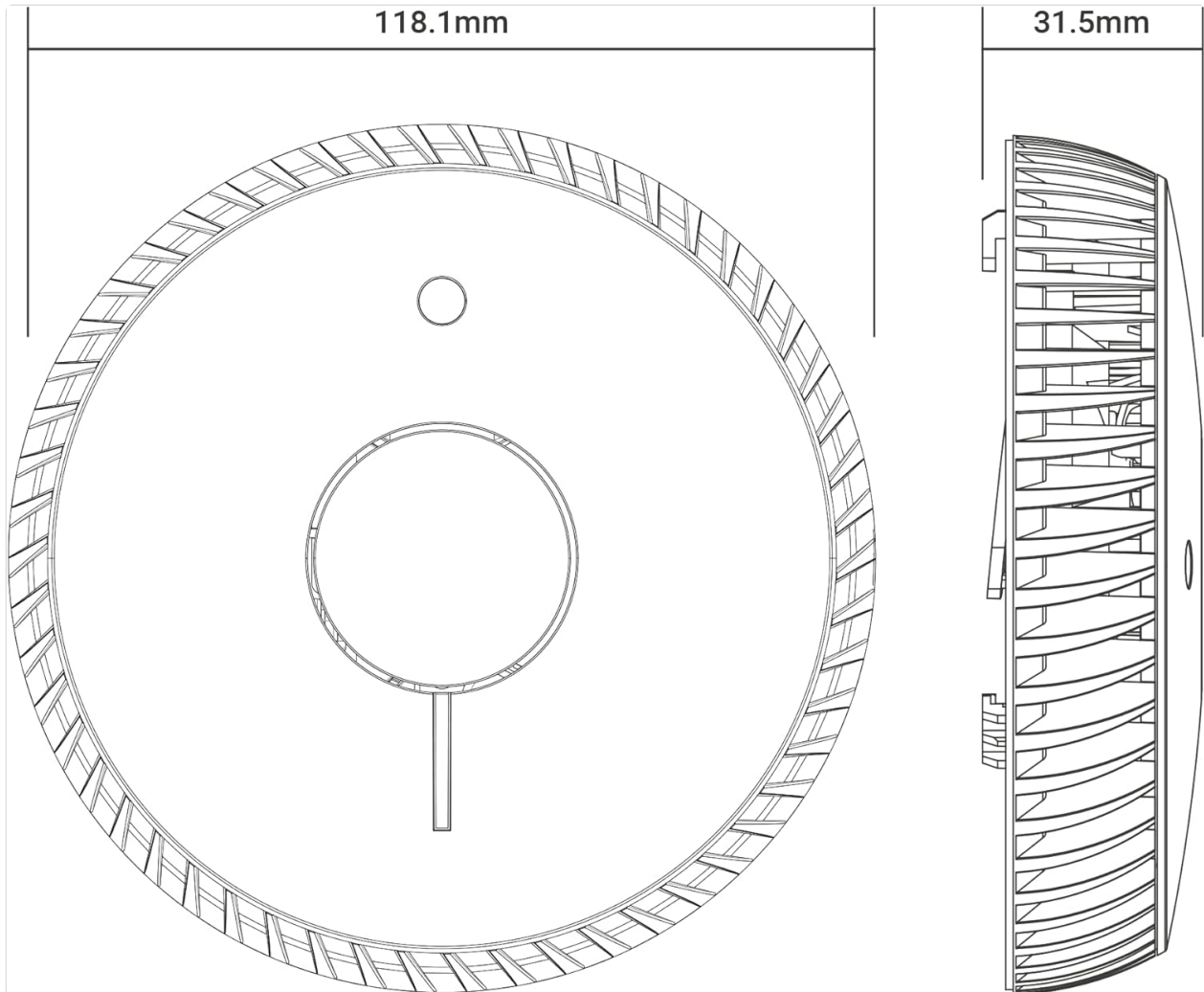


Figure 10: Technical drawing showing the dimensions of the FireAngel FA6115-FRT detector.

9. WARRANTY AND SUPPORT

9.1 Manufacturer's Warranty

The FireAngel FA6115-FRT Optical Smoke Detector comes with a **10-year manufacturer's warranty** from the date of purchase. This warranty covers defects in materials and workmanship under normal use. Please retain your proof of purchase for warranty claims.


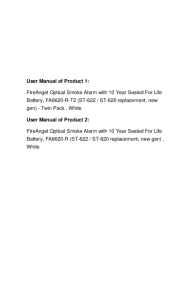

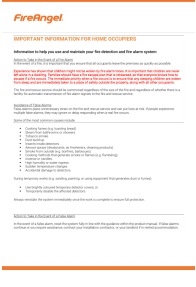

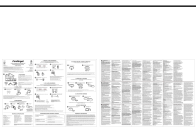
9.2 Customer Support

If you experience any issues with your smoke detector that cannot be resolved using the troubleshooting guide, or for warranty inquiries, please contact FireAngel customer support. Refer to the FireAngel official website or product packaging for the most current contact information.

Note: Do not attempt to open or repair the unit yourself, as this may void the warranty and compromise the

device's safety features.

Related Documents - FA6115-FRT

	<p>FireAngel ST-625-INT Smoke Alarm User Manual</p> <p>Comprehensive user manual for the FireAngel ST-625-INT smoke alarm, covering installation, features, maintenance, and warranty. This guide provides essential safety information and operational instructions.</p>
	<p>FireAngel Smoke and Heat Alarm User Manual: FA6611, FA6615, FA6620, FA6720</p> <p>User manual for FireAngel Optical Smoke Alarms (FA6611, FA6615, FA6620) and Heat Alarms (FA6720). Provides detailed information on positioning, installation, maintenance, troubleshooting, silence and sleep easy features, warranty, and disposal instructions for ensuring home fire safety.</p>
	<p>FireAngel Smoke & Heat Alarm User Manual: FA6611, FA6615, FA6620, FA6720</p> <p>Comprehensive user manual for FireAngel FA6611, FA6615, FA6620 optical smoke alarms and FA6720 heat alarm. Covers installation, maintenance, troubleshooting, warranty, and disposal.</p>
	<p>FireAngel: Important Information for Home Occupiers on Fire Detection and Alarm Systems</p> <p>Guidance for homeowners on using, maintaining, and understanding FireAngel fire detection and alarm systems, including actions during alarms, avoiding false alarms, and routine checks.</p>
	<p>FireAngel WST-630N Wireless Interlink Smoke Alarm User Manual</p> <p>Comprehensive user manual for the FireAngel WST-630N wireless interlink smoke alarm. Learn about Thermoptek technology, installation, operation, and safety features for reliable home fire detection.</p>
	<p>FireAngel SCB10 Combination Smoke and Carbon Monoxide Alarm User Manual</p> <p>User manual for the FireAngel SCB10, a combination smoke and carbon monoxide alarm, providing comprehensive instructions on installation, operation, maintenance, and safety for residential use.</p>