

## ieGeek ZX-GX7S

# ieGeek ZX-GX7S Indoor WiFi Security Camera User Manual

MODEL: ZX-GX7S

Your guide to setting up and operating your ieGeek security camera.

## 1. Introduction

The ieGeek ZX-GX7S is a 100% wireless indoor WiFi security camera designed for reliable home monitoring. It features 1080P Full HD video, PIR human detection, two-way audio, and infrared night vision. This manual provides detailed instructions for setup, operation, and maintenance to ensure optimal performance.



Image: ieGeek ZX-GX7S Indoor WiFi Security Camera with its magnetic mount. The camera is white and rectangular, with two lenses on the front. The white magnetic base is shown separately below it.

## 2. Package Contents

Please check the package for the following items:

- ieGeek ZX-GX7S Indoor WiFi Security Camera

- Magnetic Mounting Base
- USB Charging Cable
- User Manual
- 2x 3M Adhesives (for mounting the camera)

### 3. Product Overview

Familiarize yourself with the camera's components and features.

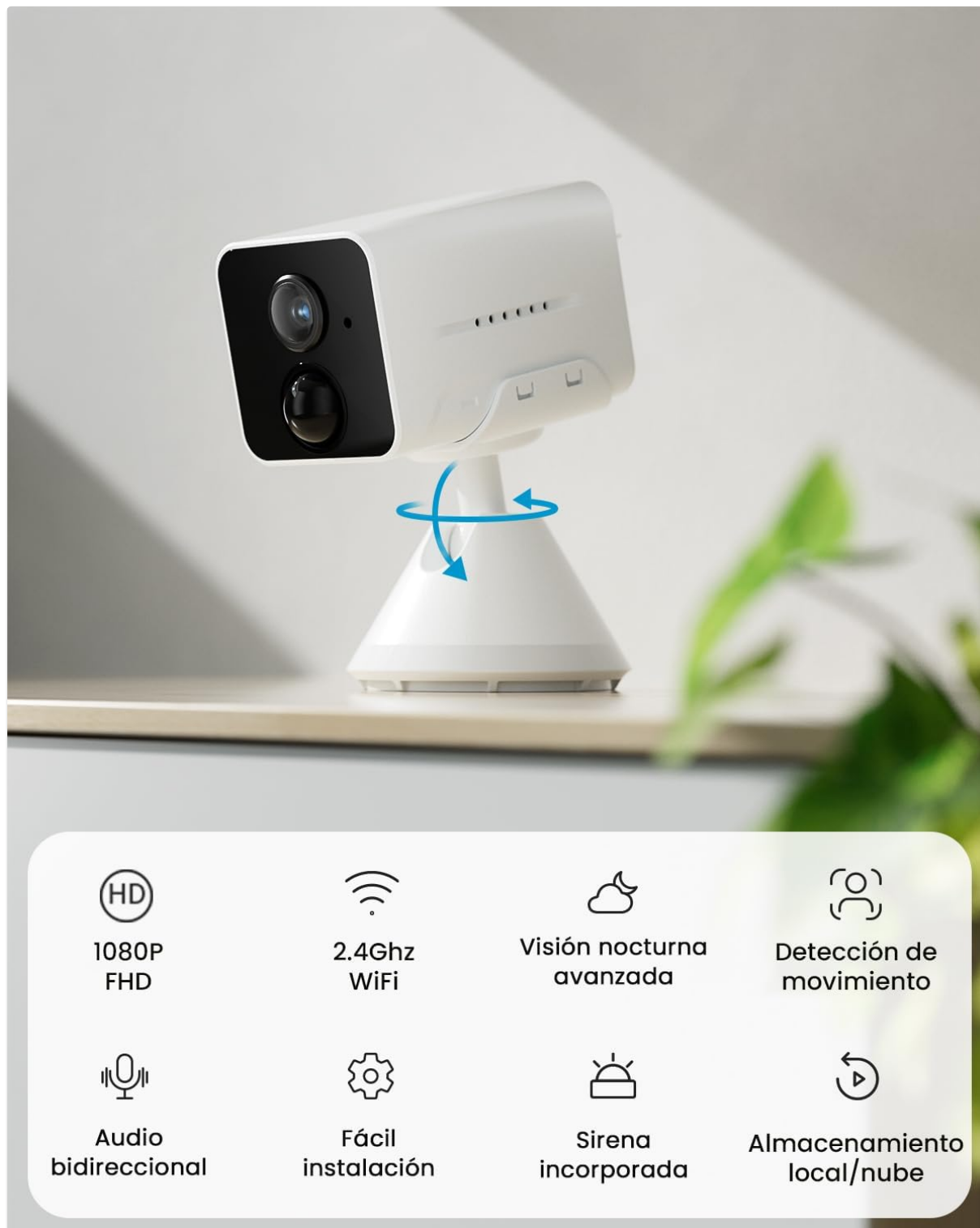


Image: ieGeek ZX-GX7S camera on its stand, with icons illustrating its features: 1080P FHD, 2.4GHz WiFi, advanced night vision, motion detection, two-way audio, easy installation, built-in siren, and local/cloud storage.

The camera features a 1080P Full HD lens, infrared LEDs for night vision, a microphone and speaker for

two-way audio, and a PIR sensor for human detection. It connects via 2.4GHz WiFi and supports both local storage (SD card) and cloud storage options.

## 4. Setup Guide

### 4.1 Charging the Camera

Before first use, fully charge the camera. The built-in 2400 mAh battery provides up to 120 days of standby time with 5 minutes of activation per day. A full charge typically takes 4 hours.

- Connect the USB charging cable to the camera's charging port and a 5V/1A power adapter (not included).
- The indicator light will show charging status (e.g., red for charging, blue for fully charged).



## 4.2 App Installation

Download the "ieGeek Cam" app from your smartphone's app store (Google Play Store for Android or Apple App Store for iOS).

1. Search for "ieGeek Cam".
2. Download and install the app.
3. Register an account and log in.

## 4.3 Network Connection

The camera supports **2.4GHz WiFi only**. Ensure your router is broadcasting a 2.4GHz network or that your phone is connected to the 2.4GHz band if you have a dual-band router.

1. Open the ieGeek Cam app and tap "Add Device" or the "+" icon.
2. Follow the on-screen instructions to connect the camera to your WiFi network. This typically involves scanning a QR code displayed on your phone with the camera.
3. Wait for the camera to connect. A voice prompt or indicator light change will confirm successful connection.

## 4.4 Mounting the Camera

The camera is designed for indoor use and offers flexible placement options due to its compact size and wireless design.

- **Tabletop Placement:** Simply place the camera on a flat surface using its magnetic base.
- **Wall/Ceiling Mounting:** Use the provided 3M adhesives to attach the magnetic base to a clean, dry surface. Ensure the surface is suitable for adhesive mounting. The camera can then be magnetically attached to the base and adjusted to the desired angle.

# Cámara con Batería Interna

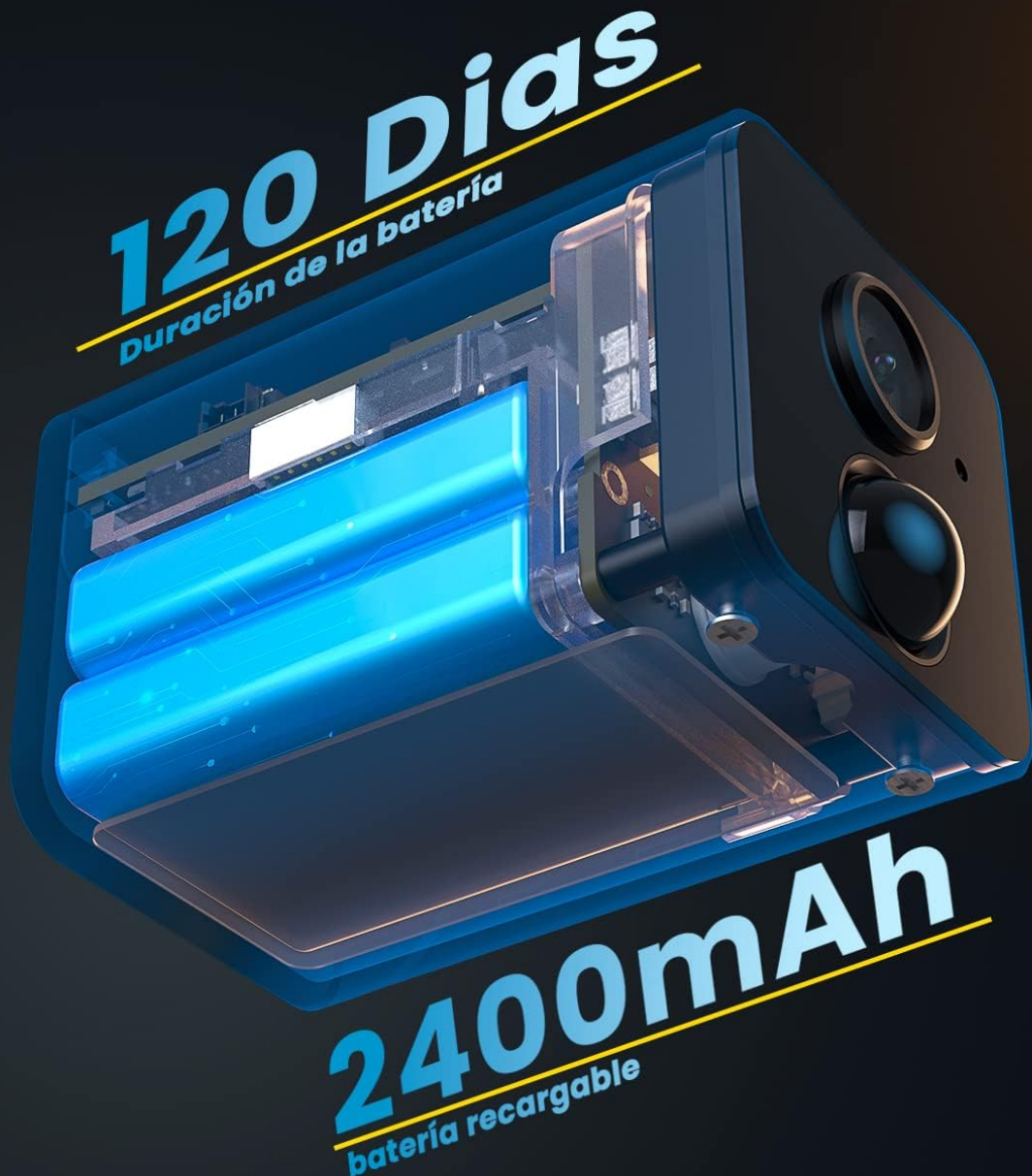


Image: Examples of ieGeek ZX-GX7S camera installation, showing it placed on a table, mounted on a wall, and mounted on a ceiling, demonstrating its small size and wireless flexibility.

## 5. Operating Instructions

### 5.1 Live View

Once connected, open the ieGeek Cam app and select your camera to view the live feed. You can monitor your indoor space in real-time.

### 5.2 Two-Way Audio

The camera features a built-in microphone and speaker, allowing for two-way communication.

- Tap the microphone icon in the live view interface to speak through the camera.



- The camera's speaker will transmit your voice, and you can hear audio from the camera's location.

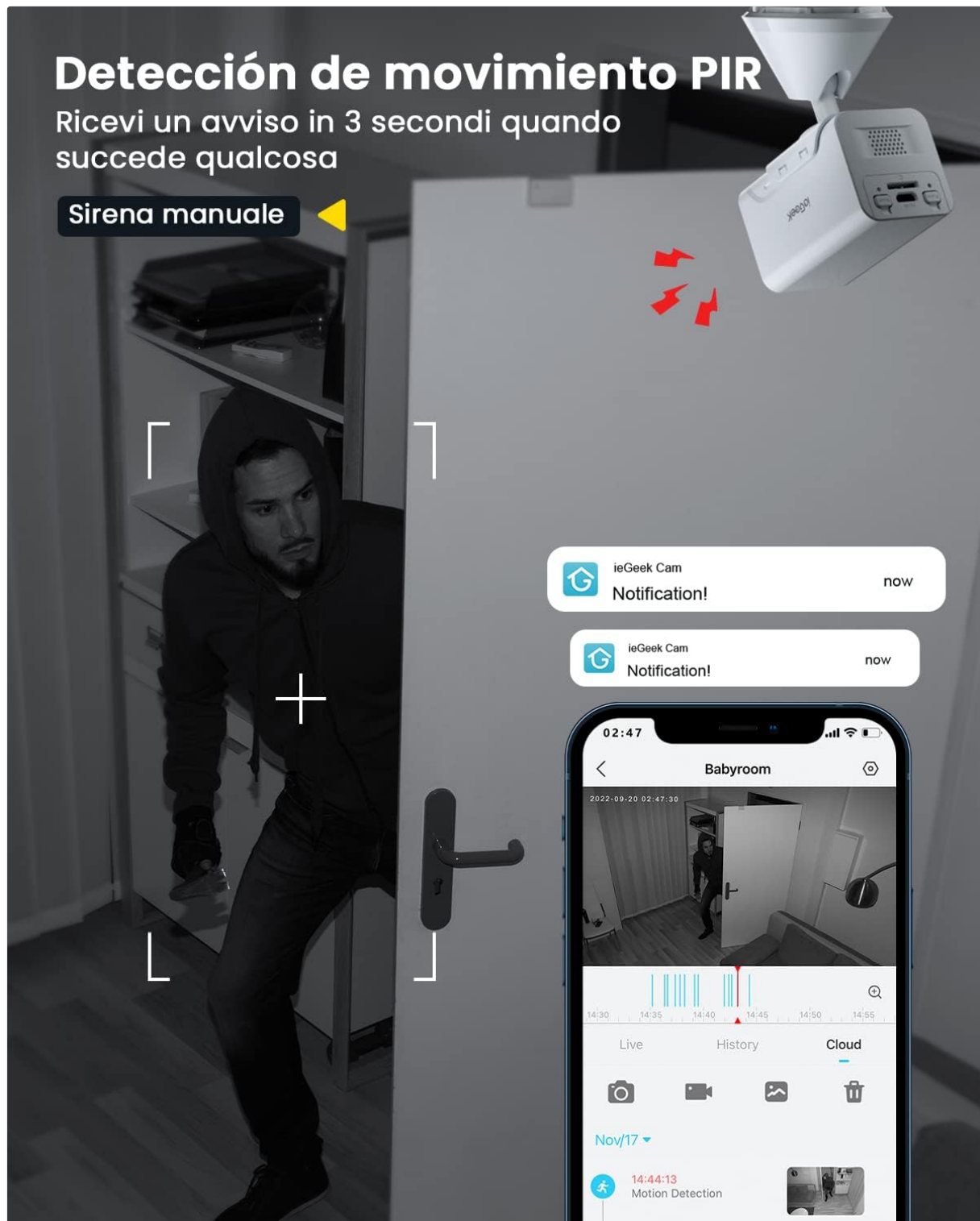


Image: Illustration of the two-way audio feature. A person is holding a smartphone displaying a child playing, with a speech bubble "Mom, look at my blocks!". Below, the camera is shown near the child's toys, with a speech bubble "Good job!".

### 5.3 PIR Human Detection

The Passive Infrared (PIR) sensor detects human movement, reducing false alarms from pets or inanimate objects.

- When human motion is detected, the camera will send instant notifications to your phone via the ieGeek Cam app.
- You can adjust the detection sensitivity from 1 to 10 stops within the app settings to suit your environment.
- The camera can be configured to detect only people, ignoring animals, further minimizing unwanted

alerts.

## Calidad de Video Clara de 1080P

Visión nocturna hasta 8m



Image: Scene depicting PIR motion detection. A person is shown entering a room, and a smartphone displays an "ieGeek Cam Notification!" alert with a black and white image of the detected motion.

### 5.4 Night Vision

The camera is equipped with infrared lights for clear night vision up to 8 meters (30 feet). In low-light conditions, the camera automatically switches to black and white night vision mode.



# Audio Bidireccional

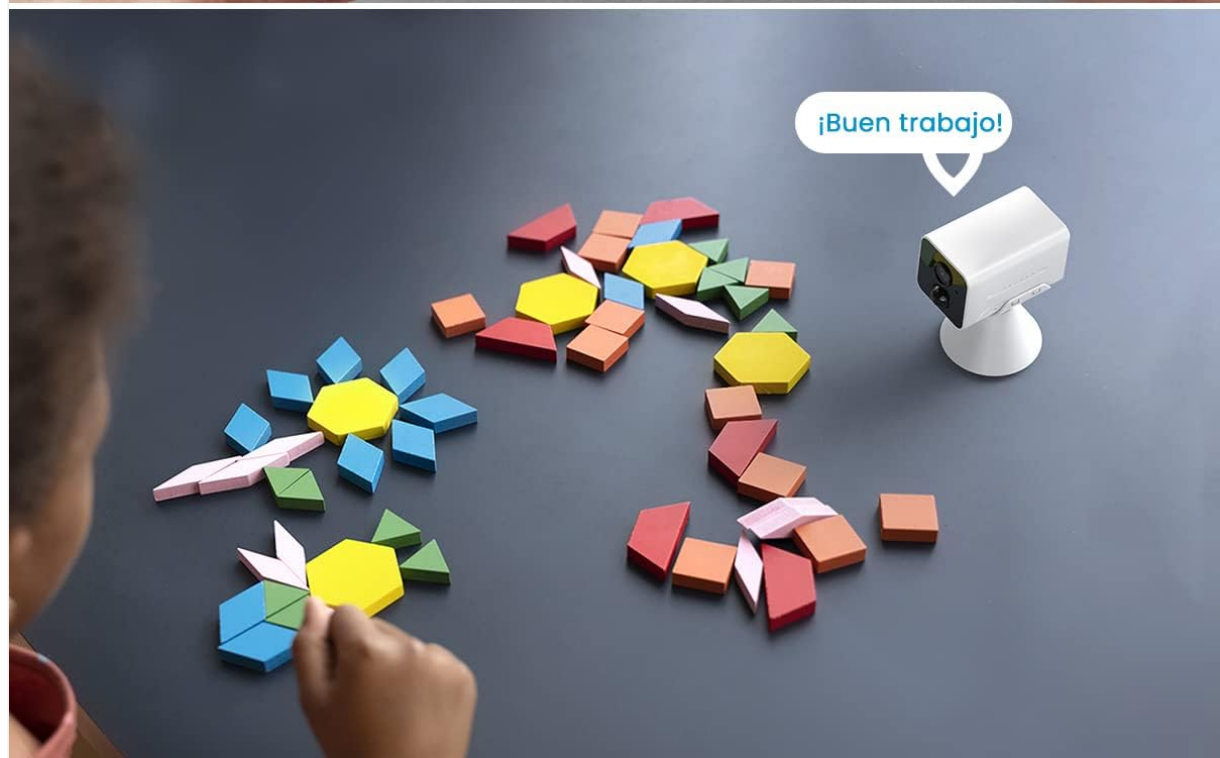


Image: Split image showing 1080P video quality. The left side shows a clear color image of an indoor hallway during the day. The right side shows a clear black and white image of the same hallway at night, indicating night vision up to 8 meters (30 feet).

## 5.5 Recording and Storage

The camera supports two storage methods for recorded video:

- **Micro SD Card:** Insert a Micro SD card (up to 128GB, not included) into the camera's slot for local storage. Videos are recorded in a loop.
- **Cloud Storage:** An optional cloud storage service is available through the ieGeek Cam app for secure off-site storage of your recordings.

Recorded videos include audio. You can manually configure recording time periods within the app.

## 5.6 Sharing Access

You can share access to your camera's live feed and recordings with family members or trusted individuals through the ieGeek Cam app.

## 6. Maintenance

- **Charging:** Recharge the camera when the battery level is low to ensure continuous operation.
- **Cleaning:** Gently wipe the camera lens with a soft, dry cloth to maintain clear image quality. Avoid using harsh chemicals.
- **Firmware Updates:** Periodically check the ieGeek Cam app for available firmware updates to ensure your camera has the latest features and security enhancements.

## 7. Troubleshooting

Issue	Possible Cause	Solution
Camera not connecting to WiFi	Incorrect WiFi password; 5GHz WiFi network; camera too far from router.	Ensure correct 2.4GHz WiFi password. Move camera closer to router. Confirm router is broadcasting 2.4GHz.
Frequent false alarms	PIR sensitivity too high; environmental factors (e.g., moving curtains, pets).	Adjust PIR sensitivity in the app. Enable human-only detection. Reposition camera to avoid common false alarm triggers.
Poor image quality	Dirty lens; insufficient lighting; network bandwidth issues.	Clean the camera lens. Ensure adequate lighting for color video. Check WiFi signal strength.
Battery drains quickly	Frequent motion detection; continuous live view; extreme temperatures.	Reduce PIR sensitivity or detection zones. Limit continuous live viewing. Ensure camera is in a suitable temperature environment.

For further assistance, please refer to the FAQ section within the ieGeek Cam app or contact customer support.

## 8. Specifications

Model Number	ZX-GX7S
Brand	ieGeek
Dimensions	6 x 3.8 x 8.8 cm; 190 g
Battery	2400 mAh (1 A required, included)
Video Resolution	1080P Full HD
Connectivity Technology	2.4Ghz WiFi
Special Features	PIR Human Detection, Night Vision, Two-Way Audio
Usage Environment	Indoor
Compatible Devices	Smartphones and Tablets (Android, iOS)



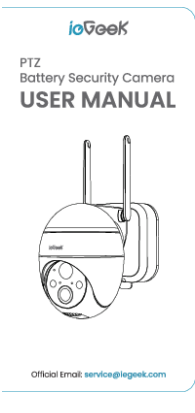
## 9. Warranty and Support




ieGeek products come with a standard warranty. Please refer to the warranty card included in your package or visit the official ieGeek website for detailed warranty terms and conditions.

For technical support, product inquiries, or warranty claims, please contact ieGeek customer service through the ieGeek Cam app or the official ieGeek support channels. Contact information can typically be found on the ieGeek website or within the app's 'About Us' section.

© 2023 ieGeek. All rights reserved.

### Related Documents - ZX-GX7S

	<p><a href="#">ieGeek ZS-GX7S Wire-free Indoor Camera Quick Start Guide</a></p> <p>Get started with your ieGeek ZS-GX7S wire-free indoor camera. This quick start guide provides essential information on setup, connection, and troubleshooting for your home security camera.</p>
	<p><a href="#">ieGeek ZS-GX7S Wire-free Indoor Camera Quick Start Guide</a></p> <p>Comprehensive quick start guide for the ieGeek ZS-GX7S wire-free indoor camera, covering setup, app connection, installation, troubleshooting, and FCC compliance. Learn how to connect your camera, manage settings via the ieGeek Cam app, and ensure optimal performance.</p>
	<p><a href="#">ieGeek PTZ Battery Security Camera User Manual</a></p> <p>User manual for the ieGeek PTZ Battery Security Camera, providing instructions on setup, connection, charging, installation, and troubleshooting.</p>

 <p>ieGeek PTZ Battery Security Camera DQ201</p> <p>USER MANUAL Official User Manual for ieGeek DQ201</p>	<p><a href="#">ieGeek DQ201 PTZ Battery Security Camera User Manual</a></p> <p>Comprehensive user manual for the ieGeek DQ201 PTZ Battery Security Camera, covering introduction, app installation, camera setup, charging, installation guides, PIR motion sensor notes, and FAQs.</p>
 <p>ieGeek PTZ Outdoor Security Camera</p> <p>USER MANUAL Official User Manual for ieGeek PTZ Outdoor Security Camera</p>	<p><a href="#">ieGeek PTZ Outdoor Security Camera User Manual</a></p> <p>User manual for the ieGeek PTZ Outdoor Security Camera, providing setup instructions, features, and troubleshooting.</p>
 <p>ieGeek PTZ Battery Security Camera ZS-GX4S</p> <p>USER MANUAL Official User Manual for ieGeek ZS-GX4S</p>	<p><a href="#">ieGeek ZS-GX4S PTZ Battery Security Camera User Manual</a></p> <p>User manual for the ieGeek ZS-GX4S PTZ Battery Security Camera, covering camera introduction, app installation, account registration, Wi-Fi connection, battery charging, installation guides, PIR motion sensor notes, and FAQs.</p>